

# SHOWER & WALL T&G INSTALLATION GUIDELINES

## 1. GENERAL INFORMATION

- Product should be installed in accordance with local building codes. The customer is responsible for checking for compliance against all state and local building codes relative to the use or installation of the product.
- Inspect all wall plank or tiles for damage before installing. If you have any concerns about the product fit or finish, call Shaw Information Services at 1-800-441-7429. Claims will not be accepted for wall plank or tiles that have been cut to size and/or installed.
- Avoid exposure to direct sunlight for prolonged periods, doing so may result in discoloration. During peak sunlight hours, the use of drapes or blinds is recommended. Excess temperature due to direct sunlight can result in thermal expansion.
- To minimize shade variation, mix and install wall plank or tiles from several cartons.
- Wall plank or tiles can be installed horizontally or vertically.
- DO NOT fasten or affix any decorative objects to walls unless directly fastening to a load bearing layer. If mounting large items, you may screw in a sheet of plywood onto the load bearing layer first, and then install the over it. Do not attach accessories like coat hooks, light fittings, mirrors, (Showers - railing, mirrors, shelving, accessories), etc. directly to the wall material. Drill holes through the wall plank or tiles and use suitable anchors to attach the accessories securely into the load bearing layer behind.
- Acclimation of wall plank or tiles prior to installation is not required. For best results, the products should be installed in a climate controlled environment with an ambient temperature range between 55° - 85°F (13°-29°C) or average temperature of 70 degrees (21.1°). *Note: Installing outside of the stated temperature ranges may alter the time of drying and curing of the sundries applied.*
- Wall installation should only be installed in climate-controlled areas (not recommended on outdoor exterior walls or in un-acclimated rooms).

**WARNING** Drilling, sawing, sanding or machining wood products can expose you to wood dust a substance known to the State of California to cause cancer. Avoid inhaling wood dust or use a dust mask or other safeguards for personal protection. For more information go to <https://www.p65warnings.ca.gov/products/wood-dust>.

## 2. WALL INFORMATION

All walls must be clean, flat, dry and structurally sound. The correct preparation of the wall is a major part of a successful installation.

- All walls must be clean, flat, dry and structurally sound. The correct preparation of the wall is a major part of a successful installation.
- Using a 3 ft. straight edge check the wall for flatness and plumb. Wall must be flat within 1/8" in 3ft.
- Wall Install Smooth Finish or an equivalent patching compound is recommended to flatten and plumb wall. Refer to manufacturer's guidelines for proper installation.
- Do not install planks or tiles directly on walls that have wallpaper or paneling.
- Un-primed, primed, or painted drywall: Product can be directly glued without fasteners.
- Concrete block or concrete walls below grade are **NOT** recommended.
- Concrete walls or concrete block: Product can be directly glued.
- If painted wall is older or questionable then overlay with 1/4" smooth APA rated plywood. Fasten plywood to the wall studs with a minimum 1 1/2" screws.
- Clean Surfaces. Before starting, make sure all surfaces are clean, dry, smooth, and free from dust, grease, wax, etc. Lightly sand any glossy surfaces to remove sheen. Clean the back surface of the panels by wiping with a clean cloth.
- **Exposed Wet Area** - Installation in showers, tubs, and shower/tub combo.
- **Exposed Wet Area** - Horizontal Installation of tile, length groove side facing down is required. Vertical installation of tile, short end groove side facing down is required.
- **Exposed Wet Area** - Caulk along tile length side groove 8 inches on horizontal seams where tile terminates into the square trim on two outside edges of shower.
- **Exposed Wet Area** - Wall MS Tubed Adhesive is required. Follow direction in Wet Area Installation for proper use of adhesive.
- **Exposed Wet Area** - For areas exposed to direct water 1/2 or 1/3 stagger.
- **Exposed Wet Area** - Sub walls should be in accordance with local building code for exposed wet areas. For best results, the recommended sub wall is a 1/2" tile backer board designed for high moisture areas with a moisture resistant core, fiberglass mats on front and back, and a moisture resistant mat coating. Some product examples are National Gypsum Gold Bond e2XP, GP DensShield, Temple Inland GreenGlass, and Certainteed GlasRoc. Waterproofing must be completed if installing over drywall or backer board with no moisture resistant properties.
- **Exposed Wet Area** - Benches and shelves must slope away 1/4" per foot from the wall for proper water drainage.
- **Exposed Wet Area** - Shower pans and substrates must have proper containment of water.
- **Shower pans must have a 1" minimum lip extending upwards around 3 of the edges with a weep holes on the front sides.**
  - Entrance side of the shower pan ledge must be sloped to allow water flow back towards the pan drain.
- **Shower tiled substrates must have installed waterproofing membrane to local code specifications and be properly sloped toward drain.**
  - The Wall Waterprep Membrane is required for installation of a tile shower, follow Wall Waterprep Membrane guidelines for installation and membrane seam treatment.
  - Shower tiled substrates must be completely installed and proper protection prior to installation of walls.

## 3. TOOLS AND MATERIAL

- For best method: Cut wall plank or tiles using a Guillotine cutter or standard wood working tools like a table saw or circular saw with a fine-tooth blade to provide a clean, smooth cut (use a 6D-tooth blade or higher).
- The wall plank or tiles can be scored and snapped. Using a utility knife and straight edge, make a few passes with the utility knife scoring the product and bend the product to separate. Sandpaper can be used to smooth the snapped edge if needed.

General Tools and Material	Wet Area Specific Tools and Material
<ul style="list-style-type: none"> <li>• Wall MS Adhesive</li> <li>• Caulk Gun</li> <li>• Safety Glasses</li> <li>• Dust Mask</li> <li>• Spacers</li> <li>• Rubber Mallet</li> <li>• Tape Measure</li> <li>• Ladder</li> <li>• Saw-(Hand Saw, Jig Saw, Circular Saw, Table Saw, Guillotine cutter)</li> <li>• Level</li> <li>• Pry Bar</li> <li>• Screw Driver (Flat &amp; Phillip's)</li> </ul>	<ul style="list-style-type: none"> <li>• Wall Water Prep</li> <li>• Wall MS Adhesive</li> <li>• Wall Caulk and Clear Silicone Caulk</li> <li>• Trowel - 1/8"x 3/32" x 1/8" U-Notch (To Install Wall Water Prep Membrane)</li> <li>• Metal Trim: Optional for 3 wall showers. Required for all outside corners.</li> <li>• 6" Putty Knife</li> <li>• Paint Brush</li> <li>• 3/8" nap roller</li> <li>• Roller Pan</li> <li>• Gloves</li> <li>• Wall Water Prep Membrane</li> <li>• Hand Roller</li> <li>• Wooden Float</li> </ul>

## 4.WET AREA INSTALLATION | WALL WATER PREP INSTALLATION

### 4.1 Pretreat

Pretreat openings around pipes and other penetrations:

1. Pack/fill the openings/spaces between drain pipe and substrate with appropriate expansion joint materials (typically foam backer rod and sealant).
2. Apply Wall Water Prep (Brown).
3. Apply 2nd coat and let dry.
4. Where Wall Water Prep coating ends on any penetration, apply a bead of silicone or urethane sealant.

### 4.2 Installation of Wall ForceFabric

Start the installation of the Wall Water Prep by applying the Wall ForceFabric to the inside and outside corners.

For coves (floor/wall intersections), allow 2" of fabric on the floor and 4" of fabric up the wall. Overlap fabric to the base of the shower pan from the wall. For cracks, control joints and vertical corners, allow 3" of fabric on each side. Provide a minimum 2" overlap when intersecting pieces of fabric during installation

1. Cut all required areas requiring the Wall ForceFabric and set aside.
2. Apply Wall Water Prep liquid 6" on both sides of the cracks, control joints, corners, coves, and base around the shower pan, using a paintbrush. If applying to corners and coves, apply 8-12 inches at a time while installing the fabric.
3. Lay pre-cut pieces of fabric into wet Wall Water Prep. Use 6" putty knife to press fabric into corners until liquid comes through fabric. Work out any wrinkles or bubbles.
4. While fabric is wet, apply additional Wall Water Prep over fabric until completely covered to create void-free surface. Let dry to a dark brown color.
5. Repeat this process the length of the corner or cove.

### 4.3 Applying Wall Water Prep to Walls.

Refer to Wall Water Prep installation guide for detailed information on product requirements and installation.

1. Apply Wall Water Prep stopping at a line above the shower head.
2. Use a paint brush, fill all screw holes with the Wall Water Prep prior to the first coat.
3. Apply 1st coat of Wall Water Prep (including previously coated areas) using a 3/8" nap roller. Let dry to a dark brown color.
4. Apply 2nd coat and let dry.
5. Final dry thickness of first and second coats should be 20 to 30 mils (about the thickness of a credit card).
6. Inspect and, as needed, recoat pinholes or areas not completely covered. Let dry.
7. A fan can be utilized to speed the Wall Water Prep drying.

### 4.4 Wall Water Prep Membrane

Before beginning installation of the Wall Water Prep Membrane make sure all sub wall requirements are completed per section 2. Wall Information. Every shower or tub configuration is different, in most cases the Water Prep Membrane will be installed vertically.

1. Begin the installation by determining the layout of the Wall Water Prep Membrane by measuring the width of the fabric and marking vertical lines (one line will be the starting line) on the wall with a straight edge and marker, or by using a chalk line. The key when determining the layout is for the membrane to wrap inside corners with no seams.
2. Cut Fabric to height or length depending on layout with a straight edge and utility knife. Roll the cut membrane back up length ways.
3. Using a the 1/8" x 3/32" x 1/8" U-notch trowel and the Wall MS Adhesive, trowel adhesive vertically in between the lines marked for the first sheet of membrane or as much adhesive that the membrane can be installed in within 15 minutes.

4. Start the installation of the membrane by placing the edge of the membrane on the vertical start line.
5. Proceed by rolling out the membrane along the wall to the corner making sure not to create any creases.
6. Take a 6" plastic putty knife and compress the membrane into the vertical corner of the shower or tub wall making sure to get a tight 45 degree angle with the fabric in the corner.
7. Install membrane on the next wall by pressing into the adhesive making sure not to create any creases. Follow steps 5 and 6 when coming to a vertical corner.
8. Once the sheet is set to the wall, starting in the middle of the sheet with a wooden float, putty knife, or hand roller; work all air bubbles up and down the sheet. This will secure the membrane to the wall and remove all air bubbles. Pull membrane back periodically to make sure there is 100% transfer.
9. For the proceeding membranes, spread adhesive on wall and 2 inches over the existing membrane to the line.
10. Overlap the next membrane to be installed over the existing membrane 2 inches to the line.

Follows steps 5-8 to finish the installation. At the overlap seams, use a putty knife to press out adhesive from the overlapped membrane to complete flush tight seam.

## 4.5 Wet Area Installation | Installing Metal Trim

**NOTE:** Trim finishing is required for all outside corners such as benches, niches, wall corners etc. Walls finishing to no corner, square trim metal can be used. Install the tiles finishing into the channel of the square trim. Every wall configuration is different; this is an example for a 3 wall configuration.

1. Using a tape measure, determine the length of the area in which the metal trim will be placed. Cut metal using a hand saw with metal blade.
2. Using a 40-60 grit sand paper, abrade the surface side of the metal that will be attached to the wall. Use a clean rag and alcohol to clean the metal.
3. Apply adhesive along the length of the metal trim, then compress metal to the wall or tile.
4. During the installation of the tiles into the channel of the trim apply a bead of silicone caulk (See Figure A).

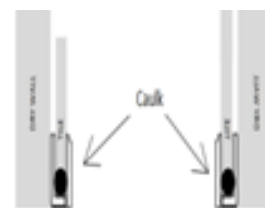


Figure A

## 4.6 Wet Area Installation | Installing Metal Trim – Bench outside Corner

For benches that are exposed on the left or right side of the shower installation procedures must be followed as stated below. *NOTE: Bench tile and trim to be installed in conjunction and prior to back and side wall tiles positioned on top side of bench. Please see section 4.8 for starting the installation on the back wall. During the installation of the tiles into the channel of the trim apply a bead of silicone caulk.*

1. Cut metal trim to exact measurement, use a scrap piece of tile placed against the back and side walls taking into account the 3 leg outside corner connector to collect measurements (See Figure B).
2. Using a metal hand saw, cut trim to length and sand the back with a 40-60 grit sand paper. Use a clean rag and alcohol to clean the trim.
3. Once the first row of tiles has been set on the back wall and the next row of tile is proceeding into the bench area, determine layout of bench top and side wall tiles. Cut and dry lay the bench top tiles (See Figure C). *NOTE: Make sure the length side groove of the bench top tiles is facing toward the shower pan.*
4. Next, slide the dry fitted bench top tiles net to the back wall tile(s) that will overlap the bench tiles. With a sharp pencil or pen, mark on back wall tile to be cut to sit over top of bench top tile(s). Cut using a jigsaw or sharp utility knife and straight edge.
5. During the installation of the bench top side tiles, apply a 1/8" bead of caulk to the length and short end groove of each tile (See Figure D). Also, during installation apply a bead of caulk where the tiles terminate into the trim.
6. Using the MS Wall Tube Adhesive, apply a 3/8" bead of adhesive along the sides and back wall. Apply a bead of adhesive 1" away from the trim on the outside of the bench (See Figure E).
7. MS Wall Adhesive: Follow direction on adhesive for preparation. For a full tile, apply 5 vertical 3/8"-1/2" wide beads of adhesive to the back of tile. Refer to section 4.8 for adhesive application on back of tiles.
8. Install bench top tiles, then install the back wall tile(s) make sure to back wall tile is setting on top of the bench tiles.
9. Complete side wall installation of the bench. Refer to section 4.8 Wet Area Installation Installing Tiles for installation details.



Figure B



Figure C



Figure D



Figure E

## 4.7 Wet Area Installation | Installing Solid Surface Bench

**NOTE:** Bench installation requires the Wall Water Prep Membrane Installation. Bench top to be installed in conjunction and prior to back and side wall tiles positioned on top side of bench. During the installation of the tiles into the channel of the trim apply a bead of silicone caulk.

1. Accounting for the thickness of the tile, measure length and width of the bench area adding ½ inch for the solid surface bench to overhang **(See Figure F)**.
2. Cut the solid surface bench per manufacture's guidelines with specific tools and blades. Sanding block can be used to smooth edges if needed.
3. After the first row of tiles has been set on the back wall and the next row of tile is proceeding into the bench area, cut and dry lay the bench top.
4. To cut the next row of back wall tile(s) sitting over bench, cut the back wall tile net to the exposed top of bench.
5. Next, slide the dry fitted bench top tiles net to the back wall tile(s). With a sharp pencil or pen, mark on back wall tile(s) to be cut to sit over top of bench top. Cut using a jigsaw or sharp utility knife and straight edge **(See Figure G)**.
6. Install bench using MS Wall adhesive using with the 1/8" x 3/32" x 1/8" U-notch trowel.
  - First apply adhesive a 1/4" tall by ½" wide band of adhesive at back and side walls **(See Figure H)**. **NOTE:** When installing bench this section should compress adhesive out of the top sides, clean of after install putty knife, rag, and alcohol.
  - Trowel adhesive raking it perpendicular to the bench install on the surface where the bench will be installed.
7. While apply pressure to the solid surface bench, move back and forth to achieve adequate adhesive bond and compress adhesive out of the back and side walls.
8. Clean adhesive off of walls and bench top with putty knife, rag, and alcohol.
9. The Square Trim can be used for the outside vertical corner of the bench. Using a metal hand saw, cut metal to length and sand the back with a 40-60 grit sand paper.
10. Use a clean rag and alcohol to clean the metal. Apply metal to wall using MS Wall Tube Adhesive. Measure, cut side wall tiles to set on top of bench and proceed with installing the tiles on the side wall.
11. Measure, cut, and install bench front and side wall tile.



Figure F



Figure G



Figure H

## 4.8 Wet Area Installation | Installing Tiles

### Getting Started

1. It is recommended that you perform a “dry layout” prior to applying any adhesive. Depending on dimensions and shower construction, trimming of the first row may need to be completed. *NOTE: If starting with a whole tile the length side groove will need to be removed.*

2. Measure and use a level. Draw a straight horizontal starting line for the top edge of the tongue of the tiles to be placed on the first row. This will assist with starting the first row aligned, level, and straight **(See Figure I).**

### Starting with the Back Wall

3. Once layout is determined, begin installing the tile on the back wall with the bottom row, working from left to right with the groove side facing down (in certain situations it may be applicable to work from left to right). If starting with a whole tile the length groove side must be removed. Make sure the first row fits properly and is aligned. Spacers can be used to assist with alignment **(See Figure J).**

4. During the installation of the back wall tiles, apply a vertical bead of adhesive in the 2 inside corners **(See Figure J).**

5. Cutting the tiles: Score and snap method can be utilized to cut the tiles with a straight edge and utility knife.

6. MS Wall Tube Adhesive: Follow direction on adhesive for preparation. For a full tile, apply 5 vertical 3/8"-1/2" wide beads of adhesive to the back of tile. **(See Figure K).** Apply the 1<sup>st</sup> and 2<sup>nd</sup> bead of adhesive 2" away from the ends, then proceed with the 3<sup>rd</sup> bead in the middle of the tile. Followed by the 4<sup>th</sup> and 5<sup>th</sup> bead evenly spaced between the outside beads of adhesive and the center.

7. A rubber mallet can be used to assist with engaging the tiles into place.

8. Wipe off excess adhesive or caulk using a clean damp rag and alcohol. Do not allow the residue to dry as it will be difficult to clean afterward. If any dried adhesive is present use rubbing or denatured alcohol and clean rag to remove.

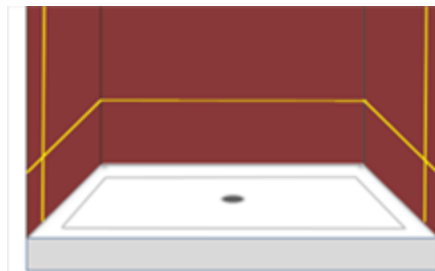


Figure I



Figure J

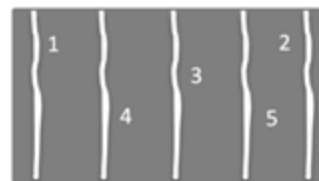


Figure K

## Continuing with the Side Walls

9. Where the pan slopes inward, use a level and mark a vertical line to the top row at the front inside base of the pan on the 2 outside walls where the pan slopes inward **(See Figure L)**.

10. On the inside of the vertical line just created at the base, use a utility knife to cut out  $\frac{3}{4}$ " square of the ForceFabric up to bottom of the sheetrock **(See Figure M)**.



Figure L

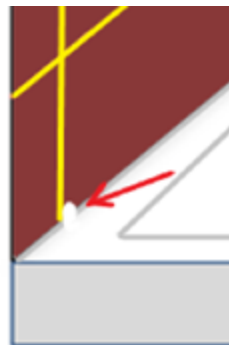


Figure M

11. During the install of the side walls, apply a thick bead of adhesive along the vertical line, making sure to completely fill the  $\frac{3}{4}$ " square void of ForceFabric and sub wall overhang of the shower pan **(See Figure N)**.

12. As the tiles are being installed on the outside edge into the square trim, apply a bead of the caulk along the horizontal groove 8 inches into the shower **(See Figure O)**.

13. Wipe off excess adhesive or silicone using a clean damp rag and alcohol. Do not allow the residue to dry as it will be difficult to clean afterward. If any dried adhesive is present use rubbing or denatured alcohol and clean rag to remove.

14. Once installation is complete, apply a bead of clear silicone around the top perimeter of the tiles at the ceiling or wall and colored silicone in corners and edges. A caulking tool and tape can be used to provide a smoother uniformed caulk line.

15. If the shower pan does not have premade weep holes, create weep holes on the 2 outside edges of the shower when caulking. Using a 1" wide piece of tape, place tape vertically at the shower pan and wall 2" inside of the downward slope of the pan. Apply caulk around perimeter of wall and pan, then the remove tape.

16. Let the adhesive and silicone dry for at least 72 hours before exposure to water.



Figure N

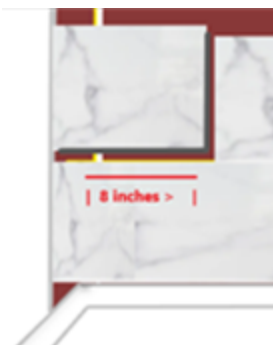


Figure O

## 5. DRY ENVIRONMENT INSTALLATION

1. Remove existing baseboards on the wall that will be receiving the product.

2. Electric outlet and light switch covers will need to be removed.

- Turn off or disconnect power supply first.
- Remove any electric outlet and light switch covers.
- Take care not to touch any exposed wiring.

3. Installing tiles: Measure width of wall and find center point and mark. Dry-lay a plank tile at the center starting mark and measure out to the wall. Divide by the length of the tile, if the resulting border is too small, move the starting point over a half tile width so that it straddles the center mark **(See Figure P)**.



Figure P

4. For plank or tiles: Measure and using a chalk line or by using a straight edge draw a straight line for the top edge of the groove of the first row of plank or tiles to be placed **(See Figure Q)**. This will assist with starting the first row aligned and straight.

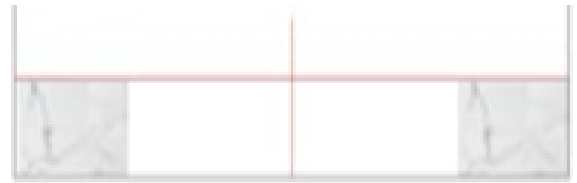


Figure Q

5. Once layout is determined, begin installing with the bottom row and work from right to left with groove up, in certain situations it may be applicable to work from left to right **(See Figure R)**. Make sure the first row fits properly and is aligned. Leave 1/8" expansion gap around perimeter.



Figure R

6. Apply adhesive to the back of the tile. The recommended adhesive is Wall CompleteBond. Apply a 1/4 inch bead around the perimeter and a "S" Serpentine bead on the back of the plank or tile **(See Figure S)**.

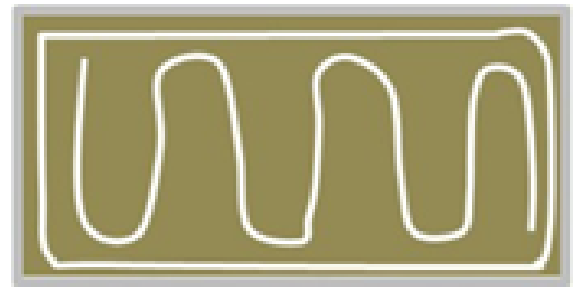


Figure S



7. Install the plank or tile to the wall by pressing it into place and applying even pressure across the tile (**See Figure T**). If necessary use painter's tape or shims (non-wet areas can be pinned into the groove of the plank or tile) to hold until adhesive sets.



Figure T