

Cove

Colección	Unite	
Número De Estilo	1027V	
Construcción	Módulo De Lvt Comercial De Tráfico Severo Con Fibra De Vidrio	
clase	Class III, Type B	
Terminación	ExoGuard®	
	U.s.	Metric
Dimensiones Nominales	10 in w x 39 in l	25 cm w x 100 cm l
Dimensiones Reales	9.84 in w x 39.37 in l	25.00 cm w x 100.00 cm l
Desgaste De La Capa De Uso	22 mil (0.022 in)	0.56 mm
Espesor Total Del Producto	0.197 in	5 mm
Perfil De Borde	Borde Cuadrado	
Installation Type	Loose Lay	
Adhesivo Recomendado	2200 Resilient Tile 4 Gallon	

Embalaje

Piezas Por Caja	10 pcs	
Área Por Caja	26.91 sq ft	2.5 sq m
Peso Por Caja	31.83 lbs	14.44 kg



Método De Instalación Recomendado



Productos Que Combinan

LVT: Inlet, Cove

Garantías

[15 Años Limitado A Uso Comercial](#)
[Commercial 15 Year Underbed Bond Warranty](#)

Diversity, Equity & Inclusion

We believe all humans are equal. Individually and collectively, we need to proactively create and promote opportunities that give everybody an equal footing in life. We nurture an environment where every voice and perspective can be heard, and proactively promote accessibility and inclusivity inside our network and beyond. One proof point is our ability to meet the criteria of the Social Fairness pillar of the Cradle to Cradle Product Standard. At Shaw Industries, we promote supplier participation that is reflective of Shaw's diverse customer base and local community. More than 42% of our spend***** is with small and diverse businesses. We believe having a strong Supplier Diversity Program is strategic for bringing more innovation to our businesses and opening new markets for growth.

Atributos + Certificaciones

Climate Impact

Environmental Product Declaration (EPD)

Certificado Tercerizado De Acuerdo Con La Norma ISO 14025, EN 15804, & ISO 21930:2017

Total Recycled Content

0% (Pre-Consumer 0% | Post-Consumer 0%)

Global Product Assessment

FloorScore® | Certificado

Country of Origin | Imported

Contribución Para Créditos Leed

Crédito MR: Divulgación y optimización de productos de construcción
Declaraciones ambientales de productos - Opción 1: Declaración ambiental de productos (EPD)

3rd Party Certified in Accordance with ISO 14025, EN 15804, & ISO 21930:2017

Crédito EQ: Materiales de baja emisión
Opción 1: Cálculos de categoría de producto

FloorScore Certified

Installation Guidelines

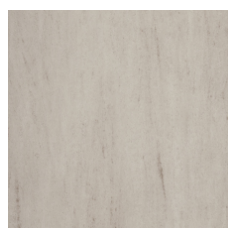
Please visit www.shawcontract.com for the most current warranty information. Specifications are subject to nominal manufacturing variance. Material supply and/or manufacturing processes may necessitate changes without notice.

Maintenance Guidelines

This product is an exclusive design and may not be duplicated in any manner. Use of this design in the creation of another product design is also strictly prohibited.
*****Allowable spend is domestic (US) spend in categories in which we have diverse suppliers from which to choose. Compared to non-allowable spend which includes categories in which we do not have domestic, small or diverse suppliers available to meet our needs.

Visit shawcontract.com/testing for more information.

Available Colorways



Plaster 27111
LRV 53.2



Lure 27201
LRV 49.4



Graze 27326
LRV 31.5



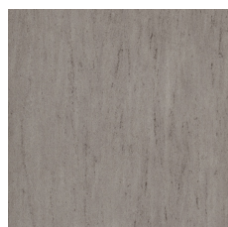
Jade 27405
LRV 20.8



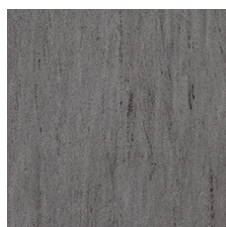
Wash 27436
LRV 23.7



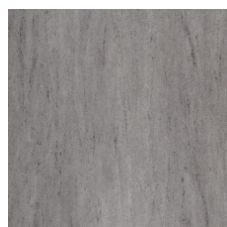
Sapphire 27486
LRV 17.2



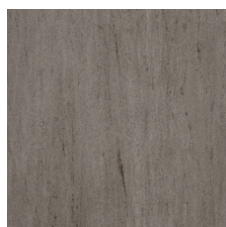
Silt 27504
LRV 31.9



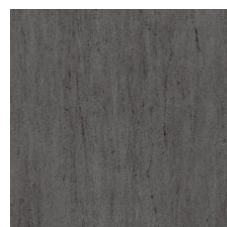
Caster 27518
LRV 23.2



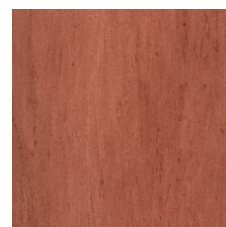
Gesso 27520
LRV 35.6



Pour 27530
LRV 21.9



Cornerstone 27585
LRV 13.5



Stoke 27855
LRV 19.7



Corporate Headquarters +1 800 257 7429 | +1 706 532 7984 | Atlanta +1 404 853 7429 | Bengaluru +91 80 6773 0202 | Beijing +86 10 6568 588 | Chicago +1 312 467 1331 | Dubai +971 4 584 6956 | Hong Kong +852 2623 0371 | Latin America (Miami) +1 305 827 5912 | London +44 207 961 4120 | Los Angeles +1 800 233 1614 | Melbourne +61 3 9939 8543 | Mexico City +55 5010 7600 | Mumbai +91 22 6284 5050 | Nantong +86 400 800 7429 | New York +1 212 953 7429 | Paris +33 (0) 1 81 22 44 39 | San Francisco +1 415 955 1920 | Santiago +562 2431 5000 x 550 | São Paulo +55 11 3071 1702 | Shanghai +86 21 3338 4000 | Singapore +65 6733 1811 | Sydney +1 800 556 302

© 2024 Shaw Industries Group, Inc., a Berkshire Hathaway Company
May 17, 2024

2 of 2