

Basstones Sheet

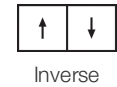
Numéro De Style	0301V	
Référence De La Baguette De Soudure	353VS	
Construction	Rouleau Hétérogène Commerciale	
classe	Type I, Grade 1, Class B	
Classe d'Endos	Endos fusionné à 4 plis	
Finition	ExoGuard®	
	Impérial	Métrique
Épaisseur De La Couche d'Usure	20 mil (0.02 in)	0.51 mm
Épaisseur Générale Du Produit	0.087 in	2.2 mm
Installation	Direct Glue	
Adhésif Recommandé	S150-95 Resilient Tile Spray, 4200 Resilient Sheet 1 Gallon, 4200 Resilient Sheet 4 Gallon, or 4151 Multi-Use Premium 4 Gallon	

Emballage

Dimensions Réelles Du Rouleau	6.00 ft w x 75.00 ft l	1.83 m w x 22.86 m l
Surface Par Rouleau	50 sy/roll	41.81 sq m/roll
Poids Par Rouleau	267.5 lbs	121.34 kg



Méthodes d'Installation Conseillées



Performance + Tests Et Essai

Charge Statique (Astm F970)	Passes (Modified), *1500 lbs	Ce Test Est Destiné À Comparer Les Propriétés Relatives De Différents Styles Et Constructions. Les Résultats Sont Basés Sur Un Test De Laboratoire Et Utilisés À Des Fins De Comparaison - La Limite De Charge Réelle Peut Varier.
Poinçonnement Rémanent (Astm F1914)	Passes	
Souplesse (Astm F137)	Passes	
Résistance À La Chaleur (Astm F1514)	Passes	
Résistance À La Lumière (Astm F1515)	Passes	
Résistance Chimique (Astm F925)	Passes	
Essai Au Panneau Radiant (Astm E648)	Passes, Class I	≥0.5, meets the recommended static coefficient of friction for ADA walking surfaces
Coefficient De Frottement (Astm D2407, Résistance Au Glissement)		

Test Reports may be included or listed by the manufacturing/inventory style number as opposed to the noted selling style number.

Garanties

[Limitée Commerciale De 15 Ans](#)
[Commercial 15 Year Underbed Bond Warranty](#)

Diversity & Inclusion

We believe all humans are equal. Individually and collectively, we need to proactively create and promote opportunities that give everybody an equal footing in life. We nurture an environment where every voice and perspective can be heard, and proactively promote accessibility and inclusivity inside our network and beyond. One proof point is our ability to meet the criteria of the Social Fairness pillar of the Cradle to Cradle Product Standard. At Shaw Industries, we promote supplier participation that is reflective of Shaw's diverse customer base and local community. More than 42% of our spend***** is with small and diverse businesses. We believe having a strong Supplier Diversity Program is strategic for bringing more innovation to our businesses and openingnew markets for growth.

Attributs + Certifications

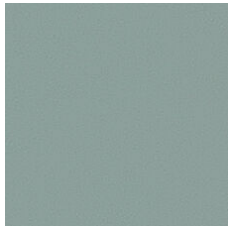
Health & Wellbeing	
Indoor Air Quality	FloorScore® Agréé
Climate Impact	
Environmental Product Declaration (EPD)	Certifié Par Une Tierce Partie Conformément Aux Normes ISO 14025, EN 15804 Et ISO 21930:2017
Total Recycled Content	0% (Pre-Consumer 0% Post-Consumer 0%)
Global Product Assessment	CE Marking (EN 14041) Certifié Par Un Tiers
	Country of Origin Imported

Contribution Au Certificat Vert Leed

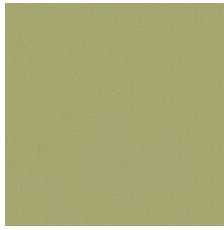
« Crédit MR : Divulgation et optimisation des produits de construction	3rd Party Certified in Accordance with ISO 14025, EN 15804, & ISO 21930:2017
Crédit EQ : matériaux faibles émissions	FloorScore Certified
Installation Guidelines	Please visit www.shawcontract.com for the most current warranty information.
Maintenance Guidelines	Specifications are subject to nominal manufacturing variance. Material supply and/or manufacturing processes may necessitate changes without notice.
	This product is an exclusive design and may not be duplicated in any manner. Use of this design in the creation of another product design is also strictly prohibited.
	*****Allowable spend is domestic (US) spend in categories in which we have diverse suppliers from which to choose. Compared to non-allowable spend which includes categories in which we do not have domestic, small or diverse suppliers available to meet our needs.
	Visit shawcontract.com/testing for more information.

Available Colorways

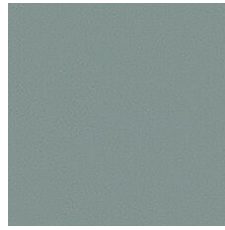
					
Flaxen Vibe 00100 Weldrod 02001	Ecrú Cadence 00110 Weldrod 02001	Desert Sound 00120 Weldrod 02027	Polished Brass 00140 Weldrod 09633	Set Off 00200 Weldrod 02002	Camel Accent 00210 Weldrod 02025



Coastal Tempo 00300
Weldrod 02003



Underscore 00310
Weldrod 02004



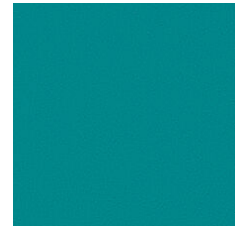
Stanza Sage 00320
Weldrod 02005



Tonal Vine 00330
Weldrod 02003



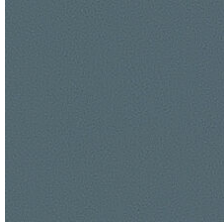
Elevate 00340
Weldrod 02006



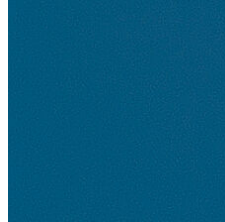
Amplitude 00350
Weldrod 02007



Aqua Tone 00360
Weldrod 02008



Graytone Fade 00410
Weldrod 02009



High Fidelity 00420
Weldrod 02010



Mineral Score 00430
Weldrod 02011



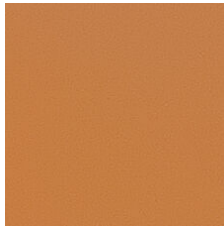
Pearly Melody 00500
Weldrod 01203



Pewter Serenade 00530
Weldrod 05244



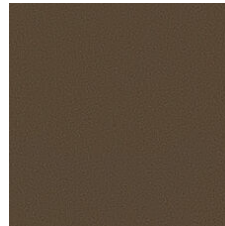
Ashen Interval 00540
Weldrod 02014



Boost 00600
Weldrod 02017



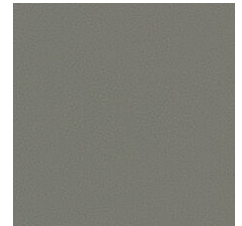
Adobe Verse 00610
Weldrod 02018



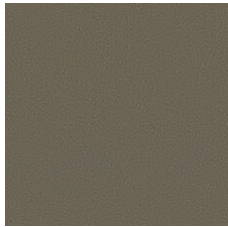
Chorale Clay 00630
Weldrod 01823



Khaki Cue 00700
Weldrod 02001



Neutral Intro 00710
Weldrod 02020



Gilded Mink 00750
Weldrod 02026



Coffee Echo 00760
Weldrod 05230



Amplify 00800
Weldrod 02022



Emphasize 00900
Weldrod 02024

