

Rethink

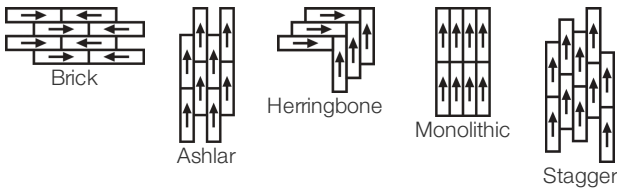
Colección	Rethink	
Número De Estilo	0733V	
Construcción	Woven Luxury Vinyl Plank De Uso Comercial	
clase	Class II, Type B	
Terminación	ExoGuard®	
	U.s.	Metric
Dimensiones Nominales	9 in w x 36 in l	23 cm w x 91 cm l
Dimensiones Reales	9.00 in w x 36.00 in l	22.86 cm w x 91.44 cm l
Espesor Total Del Producto	0.118 in	3 mm
Perfil De Borde	Borde Cuadrado	
Installation Type	Dry Back	
Instalación	Direct Glue	
Adhesivo Recomendado	S150-95 Resilient Tile Spray, 4200 Resilient Tile 4 Gallon, 2200 Semi-Wet Resilient 4 Gallon Pail, 2200 Semi-Wet Resilient 1 Gallon Pail or 4151 Multi-Use Premium 4 Gallon	

Embalaje

Piezas Por Caja	16 pcs	
Área Por Caja	36 sq ft	3.34 sq m
Peso Por Caja	37.48 lbs	17 kg



Método De Instalación Recomendado



desempeño + pruebas

resistencia al calor (ASTM F1514)	Passes
resistencia a la luz (ASTM F1515)	Passes
resistencia a productos químicos (ASTM F925)	Passes
panel radiante (ASTM E648)	Passes, Class I
coeficiente de fricción (ASTM D2407, resistencia al deslizamiento)	>0.6, meets the recommended static coefficient of friction for ADA walking surfaces and accessible routes

Test Reports may be included or listed by the manufacturing/inventory style number as opposed to the noted selling style number.

Garantías

[15 Años Limitado A Uso Comercial](#)

Diversity & Inclusion

We promote supplier participation that is reflective of Shaw Industries' diverse customer base and local community. We believe having a strong Supplier Diversity Program is strategic for bringing more innovation to our businesses and opening new markets for growth.

Atributos + Certificaciones

Health & Wellbeing	
Material Ingredient Transparency	Health Product Declaration (HPD) 1000 ppm Disclosure
Indoor Air Quality	FloorScore® Certificado
Climate Impact	
Environmental Product Declaration (EPD)	Certificado Tercerizado De Acuerdo Con La Norma ISO 14025, EN 15804, & ISO 21930:2017
Embodied Carbon (Cradle to Gate)	7.31 Kg Co ₂ /M ²
Life-Cycle Carbon Emissions	Low Embodied Carbon
Total Recycled Content	0% (Pre-Consumer 0% Post-Consumer 0%)
Global Product Assessment	CE Marking (EN 14041) Certificado Tercerizado
	Country of Origin Imported

WELL V2 Contribution Credit

X01 Fundamental Material Precautions Part 1: (C): Restrict Asbestos Precondition	Absence of Asbestos
X08 Hazardous Material Reduction Part 1: Limit Hazardous Materials Optimization – 1 pt	Absence of Heavy Metals
X10 Volatile Compound Reduction Part 1 (A): Manage Volatile Organic Compounds (VOCs) Optimization – 1 pt	Absence of Halogenated Flame Retardants
Part 2: Manage Semi-Volatile Organic Compounds (SVOCs) Optimization – 1 pt	Ortho-Phthalates
X11 Long Term Emissions Control Part 2: Flooring Optimization – 1 pt	FloorScore Certificate

Contribución Para Créditos Leed

Crédito MR: Divulgación y optimización de productos de construcción Ingredientes de materiales - Opción 1: Informe de ingredientes de los materiales	Health Product Declaration (HPD) 100 Ppm Disclosure
Crédito MR: Divulgación y optimización de productos de construcción Declaraciones ambientales de productos - Opción 1: Declaración ambiental de productos (EPD)	3rd Party Certified in Accordance with ISO 14025, EN 15804, & ISO 21930:2017
Crédito EQ: Materiales de baja emisión Opción 1: Cálculos de categoría de producto	FloorScore® Certified

Installation Guidelines

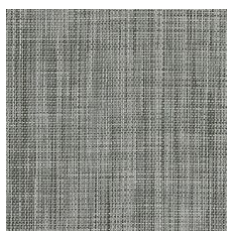
Maintenance Guidelines

Please visit www.shawcontract.com for the most current warranty information.
Specifications are subject to nominal manufacturing variance. Material supply and/or manufacturing processes may necessitate changes without notice.

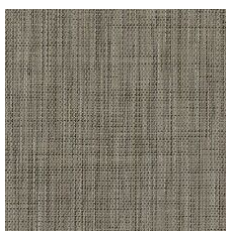
This product is an exclusive design and may not be duplicated in any manner. Use of this design in the creation of another product design is also strictly prohibited.

Visit shawcontract.com/testing for more information.

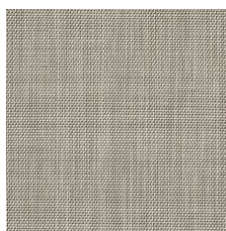
Available Colorways



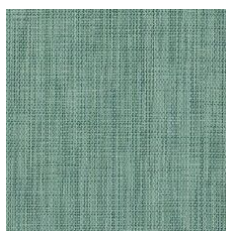
Hybrid 33100
LRV 20.4 | L* 52.26
V1 - Uniform Appearance



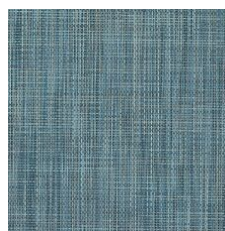
Structure 33150
LRV 18.9 | L* 50.53
V1 - Uniform Appearance



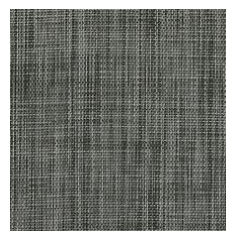
Minimal 33155
LRV 30.7 | L* 63.58
V1 - Uniform Appearance



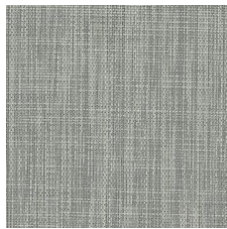
Essence 33340
LRV 22.7 | L* 54.76
V1 - Uniform Appearance



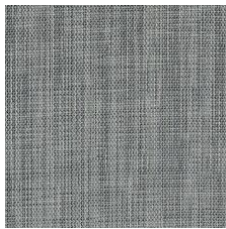
Energy 33405
LRV 16.4 | L* 47.53
V1 - Uniform Appearance



Carbon 33505
LRV 12.2 | L* 41.52
V1 - Uniform Appearance



Core 33515
LRV 32.7 | L* 63.93
V1 - Uniform Appearance



Metal 33530
LRV 20.7 | L* 52.62
V1 - Uniform Appearance



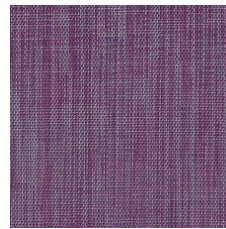
Industry 33751
LRV 14.9 | L* 45.47
V1 - Uniform Appearance



Element 33755
LRV 16.5 | L* 47.66
V1 - Uniform Appearance



Smart 33856
LRV 17.3 | L* 48.58
V1 - Uniform Appearance



Innovate 33991
LRV 17.1 | L* 48.38
V1 - Uniform Appearance

Color and Visual Variation Index

Shade and texture variation is inherent in all resilient products and can vary significantly from piece to piece. Samples should be used to assess color.

V1



Uniform Appearance

V2



Slight Variation

V3



Moderate Variation

V4



Substantial Variation

