

Rethink

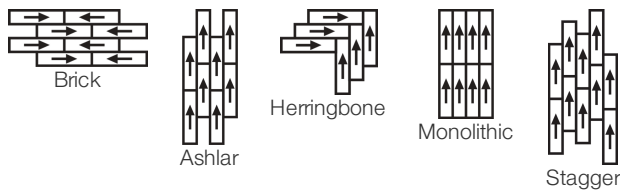
Collection	Rethink	
Numéro De Style	0733V	
Construction	Carreaux De Vinyle De Luxe Commerciale Tissé	
classe	Class II, Type B	
Finition	ExoGuard®	
	Impérial	Métrique
Dimensions Nominales	9 in w x 36 in l	23 cm w x 91 cm l
Dimensions Réelles	9.00 in w x 36.00 in l	22.86 cm w x 91.44 cm l
Épaisseur Générale Du Produit	0.118 in	3 mm
Profil Du Bord	Bord Carré	
Installation Type	Dry Back	
Installation	Direct Glue	
Adhésif Recommandé	S150-95 Resilient Tile Spray, 4200 Resilient Tile 4 Gallon, 2200 Semi-Wet Resilient 4 Gallon Pail, 2200 Semi-Wet Resilient 1 Gallon Pail or 4151 Multi-Use Premium 4 Gallon	

Emballage

Pièces Par Carton	16 pcs	
Surface Par Carton	36 sq ft	3.34 sq m
Poids Par Carton	37.48 lbs	17 kg



Méthodes d'Installation Conseillées



performance + Tests et essai

résistance à la chaleur (ASTM F1514)

Passes

résistance à la lumière (ASTM F1515)

Passes

résistance chimique (ASTM F925)

Passes

Essai au panneau radiant (Astm E648)

Passes, Class I

coefficient de frottement (ASTM D2407, résistance au glissement)

>0.6, meets the recommended static coefficient of friction for ADA walking surfaces and accessible routes

Test Reports may be included or listed by the manufacturing/inventory style number as opposed to the noted selling style number.

Garanties

[Limitée Commerciale De 15 Ans](#)

Diversity & Inclusion

We promote supplier participation that is reflective of Shaw Industries' diverse customer base and local community. We believe having a strong Supplier Diversity Program is strategic for bringing more innovation to our businesses and opening new markets for growth.

Attributs + Certifications

Health & Wellbeing	
Material Ingredient Transparency	Health Product Declaration (HPD) 1000 ppm Disclosure
Indoor Air Quality	FloorScore® Agréé
Climate Impact	
Environmental Product Declaration (EPD)	Certifié Par Une Tierce Partie Conformément Aux Normes ISO 14025, EN 15804 Et ISO 21930:2017
Embodied Carbon (Cradle to Gate)	7.31 Kg Co ₂ /M ²
Life-Cycle Carbon Emissions	Low Embodied Carbon
Total Recycled Content	0% (Pre-Consumer 0% Post-Consumer 0%)
Global Product Assessment	CE Marking (EN 14041) Certifié Par Un Tiers
	Country of Origin Imported

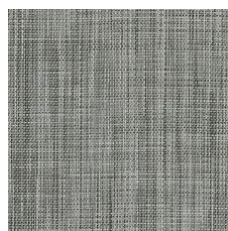
WELL V2 Contribution Credit

X01 Fundamental Material Precautions Part 1: (C): Restrict Asbestos Precondition	Absence of Asbestos
X08 Réduction des matières dangereuses Partie 1 : Optimisation des limites des matières dangereuses – 1 pt	Absence of Heavy Metals
X10 Réduction des composés volatils Partie 1 (A) : Gérer l'optimisation des composés organiques volatils (COV) - 1 pt	Absence of Halogenated Flame Retardants
Partie 2 : Gérer l'optimisation des composés organiques semi-volatils (COSV) - 1 pt	Ortho-Phthalates
X11 Contrôle des émissions à long terme Partie 2 : Optimisation des revêtements de sol – 1 pt	FloorScore Certificate

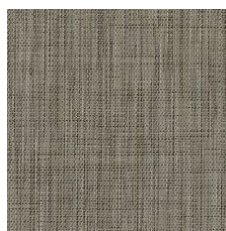
Contribution Au Certificat Vert Leed

« Crédit MR : Divulgation et optimisation des produits de construction	Health Product Declaration (HPD) 100 Ppm Disclosure
« Crédit MR : Divulgation et optimisation des produits de construction	3rd Party Certified in Accordance with ISO 14025, EN 15804, & ISO 21930:2017
Crédit EQ : matériaux faibles émissions	FloorScore Certified
Installation Guidelines	Please visit www.shawcontract.com for the most current warranty information.
Maintenance Guidelines	Specifications are subject to nominal manufacturing variance. Material supply and/or manufacturing processes may necessitate changes without notice.
	This product is an exclusive design and may not be duplicated in any manner. Use of this design in the creation of another product design is also strictly prohibited.
	Visit shawcontract.com/testing for more information.

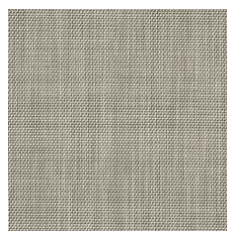
Available Colorways



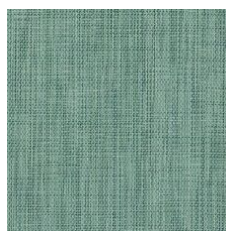
Hybrid 33100
LRV 20.4 | L* 52.26
V1 - Uniform Appearance



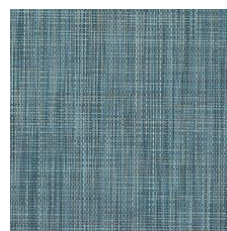
Structure 33150
LRV 18.9 | L* 50.53
V1 - Uniform Appearance



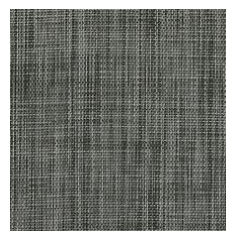
Minimal 33155
LRV 30.7 | L* 63.58
V1 - Uniform Appearance



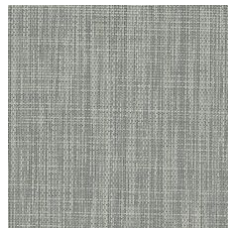
Essence 33340
LRV 22.7 | L* 54.76
V1 - Uniform Appearance



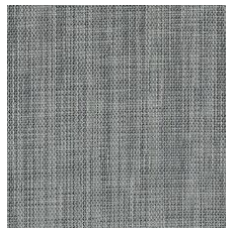
Energy 33405
LRV 16.4 | L* 47.53
V1 - Uniform Appearance



Carbon 33505
LRV 12.2 | L* 41.52
V1 - Uniform Appearance



Core 33515
LRV 32.7 | L* 63.93
V1 - Uniform Appearance



Metal 33530
LRV 20.7 | L* 52.62
V1 - Uniform Appearance



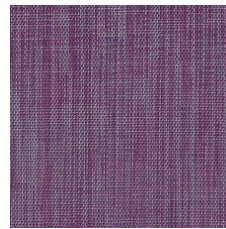
Industry 33751
LRV 14.9 | L* 45.47
V1 - Uniform Appearance



Element 33755
LRV 16.5 | L* 47.66
V1 - Uniform Appearance



Smart 33856
LRV 17.3 | L* 48.58
V1 - Uniform Appearance



Innovate 33991
LRV 17.1 | L* 48.38
V1 - Uniform Appearance

Color and Visual Variation Index

Shade and texture variation is inherent in all resilient products and can vary significantly from piece to piece. Samples should be used to assess color.

V1



Uniform Appearance

V2



Slight Variation

V3



Moderate Variation

V4



Substantial Variation

