

Rethink

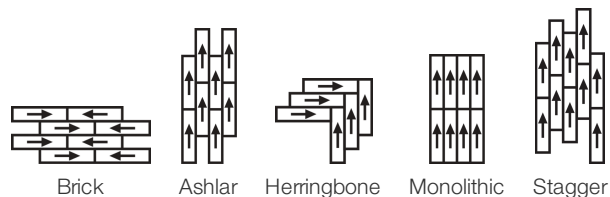
コレクション	Rethink
スタイルナンバー	0733V
建設	商業用の高級織ビニールタイル
クラス	Class II, Type B
仕上げ	ExoGuard®
公称寸法	米国 メートル法
	9 in w x 36 in l 23 cm w x 91 cm l
実際の寸法	9.00 in w x 36.00 in l 22.86 cm w x 91.44 cm l
製品全体の厚さ	0.118 in 3 mm
エッジプロファイル	スクエア エッジ
Installation Type	Dry Back
インストール	Direct Glue
推奨接着剤	S150-95 Resilient Tile Spray, , 4200 Resilient Tile 4 Gallon, 2200 Semi-Wet Resilient 4 Gallon Pail, 2200 Semi-Wet Resilient 1 Gallon Pail, or 4151 Multi-Use Premium 4 Gallon

包装

ボックスあたりの個数	16 pcs	
ボックスあたりの面積	36 sq ft	3.34 sq m
ボックスあたりの重量	37.48 lbs	17 kg



推奨インストール方法



パフォーマンス + テスト

耐熱性 (ASTM F1514)	Passes
耐光性 (ASTM F1515)	Passes
耐薬品性 (ASTM F925)	Passes
放射パネル (ASTM E648)	Passes, Class I
摩擦係数(ASTM D2407、滑り抵抗)	>0.6, meets the recommended static coefficient of friction for ADA walking surfaces and accessible routes

Test Reports may be included or listed by the manufacturing/inventory style number as opposed to the noted selling style number.

保証

[15年の商用限定保証](#)

Diversity & Inclusion

We promote supplier participation that is reflective of Shaw Industries' diverse customer base and local community. We believe having a strong Supplier Diversity Program is strategic for bringing more innovation to our businesses and opening new markets for growth.

属性+認定

Health & Wellbeing	
Material Ingredient Transparency	Health Product Declaration (HPD) 1000 ppm Disclosure
Indoor Air Quality	FloorScore® 認証取得
Climate Impact	
Environmental Product Declaration (EPD)	ISO 14025、EN 15804 および ISO 21930:2017 に基づく第三者認証取得
Embodied Carbon (Cradle to Gate)	7.31 Kg Co ₂ /M ²
Life-Cycle Carbon Emissions	Low Embodied Carbon
Total Recycled Content	0% (Pre-Consumer 0% Post-Consumer 0%)
Global Product Assessment	CE Marking (EN 14041) 第三者認証取得
	Country of Origin Imported

WELL V2 Contribution Credit

X01 Fundamental Material Precautions Part 1: (C): Restrict Asbestos Precondition	Absence of Asbestos
X08 Hazardous Material Reduction Part 1: Limit Hazardous Materials Optimization – 1 pt	Absence of Heavy Metals
X10 Volatile Compound Reduction Part 1 (A): Manage Volatile Organic Compounds (VOCs) Optimization – 1 pt	Absence of Halogenated Flame Retardants
Part 2: Manage Semi-Volatile Organic Compounds (SVOCs) Optimization – 1 pt	Ortho-Phthalates
X11 Long Term Emissions Control Part 2: Flooring Optimization – 1 pt	FloorScore Certificate

グリーンリード貢献クレジット

MRクレジット：製品の開示と最適化の構築 材料成分-オプション1：材料成分レポート	Health Product Declaration (HPD) 100 Ppm Disclosure
MRクレジット：製品の開示と最適化の構築 環境製品宣言-オプション1：環境製品宣言 (EPD)	3rd Party Certified in Accordance with ISO 14025, EN 15804, & ISO 21930:2017
EQクレジット：低排出材料 オプション1：製品カテゴリの計算	FloorScore® Certified

Installation Guidelines

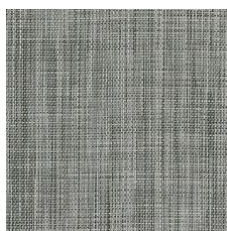
Maintenance Guidelines

Please visit www.shawcontract.com for the most current warranty information.
Specifications are subject to nominal manufacturing variance. Material supply and/or manufacturing processes may necessitate changes without notice.

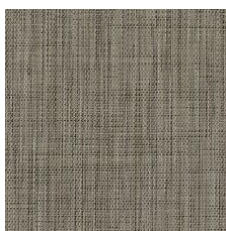
This product is an exclusive design and may not be duplicated in any manner. Use of this design in the creation of another product design is also strictly prohibited.

Visit shawcontract.com/testing for more information.

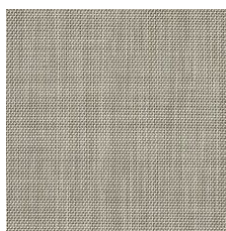
Available Colorways



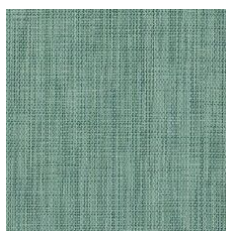
Hybrid 33100
LRV 20.4 | L* 52.26
V1 - Uniform Appearance



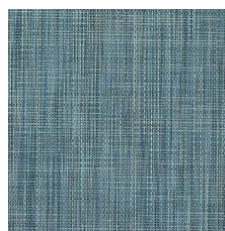
Structure 33150
LRV 18.9 | L* 50.53
V1 - Uniform Appearance



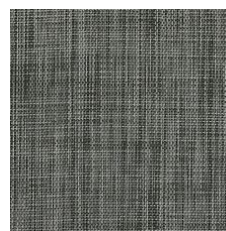
Minimal 33155
LRV 30.7 | L* 63.58
V1 - Uniform Appearance



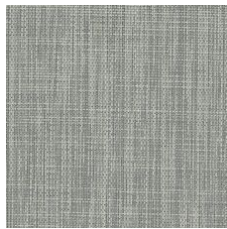
Essence 33340
LRV 22.7 | L* 54.76
V1 - Uniform Appearance



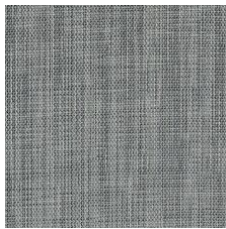
Energy 33405
LRV 16.4 | L* 47.53
V1 - Uniform Appearance



Carbon 33505
LRV 12.2 | L* 41.52
V1 - Uniform Appearance



Core 33515
LRV 32.7 | L* 63.93
V1 - Uniform Appearance



Metal 33530
LRV 20.7 | L* 52.62
V1 - Uniform Appearance



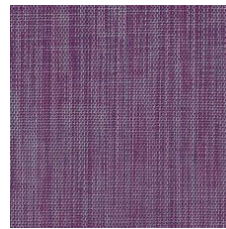
Industry 33751
LRV 14.9 | L* 45.47
V1 - Uniform Appearance



Element 33755
LRV 16.5 | L* 47.66
V1 - Uniform Appearance



Smart 33856
LRV 17.3 | L* 48.58
V1 - Uniform Appearance



Innovate 33991
LRV 17.1 | L* 48.38
V1 - Uniform Appearance

Color and Visual Variation Index

Shade and texture variation is inherent in all resilient products and can vary significantly from piece to piece. Samples should be used to assess color.

V1



Uniform Appearance

V2



Slight Variation

V3



Moderate Variation

V4



Substantial Variation

