

Rethink

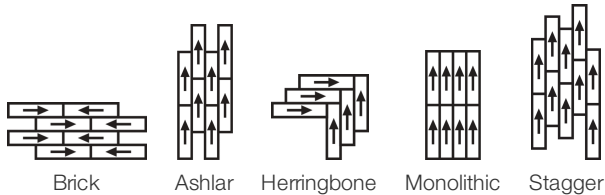
수집	Rethink	
스타일 번호	0733V	
구성	상용 우븐 고급 비닐타일	
수업	Class II, Type B	
끝	ExoGuard®	
	미국	미터법
공칭 치수	9 in w x 36 in l	23 cm w x 91 cm l
실제 치수	9.00 in w x 36.00 in l	22.86 cm w x 91.44 cm l
전체 제품 두께	0.118 in	3 mm
가장자리 프로파일	사각형 모서리	
Installation Type	Dry Back	
설치	Direct Glue	
권장 접착제	S150-95 Resilient Tile Spray, 4200 Resilient Tile 4 Gallon, 2200 Resilient Tile 4 Gallon or 4151 Multi-Use Premium 4 Gallon	

포장

상자 당 조각	16 pcs	
상자 당 면적	36 sq ft	3.34 sq m
상자 당 무게	37.48 lbs	17 kg



권장 설치 방법



공연 + 테스트

내열성 (Astm F1514)	Passes
내광성 (Astm F1515)	Passes
화학 물질에 대한 내성 (Astm F925)	Passes
마찰 계수 (astm D2407, 미끄러짐 저항)	>0.6, meets the recommended static coefficient of friction for ADA walking surfaces and accessible routes

Test Reports may be included or listed by the manufacturing/inventory style number as opposed to the noted selling style number.

보증

15년 상용 제한

Diversity, Equity & Inclusion

We believe all humans are equal. Individually and collectively, we need to proactively create and promote opportunities that give everybody an equal footing in life. We nurture an environment where every voice and perspective can be heard, and proactively promote accessibility and inclusivity inside our network and beyond. One proof point is our ability to meet the criteria of the Social Fairness pillar of the Cradle to Cradle Product Standard. At Shaw Industries, we promote supplier participation that is reflective of Shaw's diverse customer base and local community. More than 42% of our spend\*\*\*\*\* is with small and diverse businesses. We believe having a strong Supplier Diversity Program is strategic for bringing more innovation to our businesses and openingnew markets for growth.

속성 + 인증

Health & Wellbeing

Material Ingredient Transparency

Health Product Declaration (HPD) | 1000 ppm Disclosure

Climate Impact

Environmental Product Declaration (EPD)

Embodied Carbon (Cradle to Gate)

Total Recycled Content

ISO 14025, EN 15804 및 ISO 21930:2017에 따라 타사 인증 획득

7.31 Kg Co<sub>2</sub>/M<sup>2</sup>

0% (Pre-Consumer 0% | Post-Consumer 0%)

Global Product Assessment

FloorScore® | 인증

CE Marking (EN 14041) | 타사 인증 획득

Country of Origin | Imported

녹색의 공헌 기여 크레딧

MR 크레딧 : 제품 공개 및 최적화 구축  
재료 성분-옵션 1 : 재료 성분보고

MR 크레딧 : 제품 공개 및 최적화 구축  
환경 제품 선언-옵션 1 : 환경 제품 선언 (EPD)

EQ 크레딧 : 저 발광 재료  
옵션 1 : 제품 범주 계산

Installation Guidelines

Maintenance Guidelines

Health Product Declaration (HPD) | 100 Ppm Disclosure

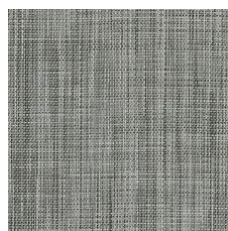
3rd Party Certified in Accordance with ISO 14025, EN 15804, & ISO 21930:2017  
FloorScore Certified

Please visit [www.shawcontract.com](http://www.shawcontract.com) for the most current warranty information.  
Specifications are subject to nominal manufacturing variance. Material supply and/or manufacturing processes may necessitate changes without notice.

This product is an exclusive design and may not be duplicated in any manner. Use of this design in the creation of another product design is also strictly prohibited.  
\*\*\*\*\*Allowable spend is domestic (US) spend in categories in which we have diverse suppliers from which to choose. Compared to non-allowable spend which includes categories in which we do not have domestic, small or diverse suppliers available to meet our needs.

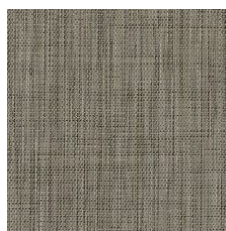
Visit [shawcontract.com/testing](http://shawcontract.com/testing) for more information.

## Available Colorways



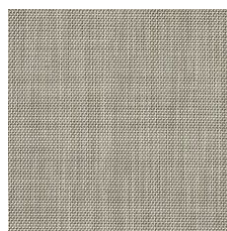
Hybrid 33100  
LRV 20.4

V1 - Uniform Appearance



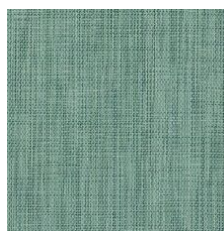
Structure 33150  
LRV 18.9

V1 - Uniform Appearance



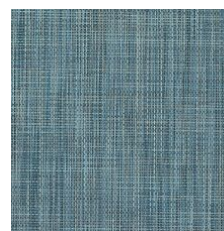
Minimal 33155  
LRV 30.7

V1 - Uniform Appearance



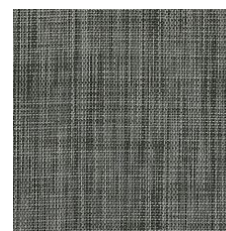
Essence 33340  
LRV 22.7

V1 - Uniform Appearance



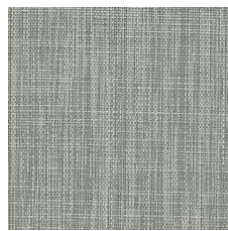
Energy 33405  
LRV 16.4

V1 - Uniform Appearance



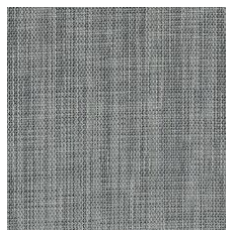
Carbon 33505  
LRV 12.2

V1 - Uniform Appearance



Core 33515  
LRV 32.7

V1 - Uniform Appearance



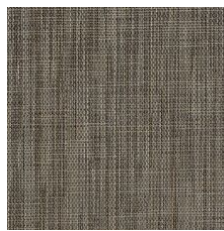
Metal 33530  
LRV 20.7

V1 - Uniform Appearance



Industry 33751  
LRV 14.9

V1 - Uniform Appearance



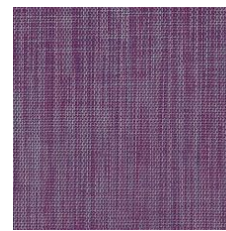
Element 33755  
LRV 16.5

V1 - Uniform Appearance



Smart 33856  
LRV 17.3

V1 - Uniform Appearance



Innovate 33991  
LRV 17.1

V1 - Uniform Appearance

### Color and Visual Variation Index

Shade and texture variation is inherent in all resilient products and can vary significantly from piece to piece. Samples should be used to assess color.

V1



Uniform Appearance

V2



Slight Variation

V3



Moderate Variation

V4



Substantial Variation

