

Rethink

Stijlnummer	0733V	
Producttype	Commerciële Geweven Luxe Vinyl Tegel	
Collectie	Rethink	
Uitzicht	Stijlnaam	Gegevens + Prestatie
Type of Floorcovering	EN 1307	textile vinyl tile without pile
Classificatie	ISO 10874	33 commercial heavy
Totale Massa	EN ISO 23997	4.95 kg/m²
Totale Dikte	EN ISO 24346	3 mm
Afmetingen	EN 994	22.86 cm x 91.44 cm 16 tiles (3.34 sq m) per box
Gewicht Per Doos		17 kg

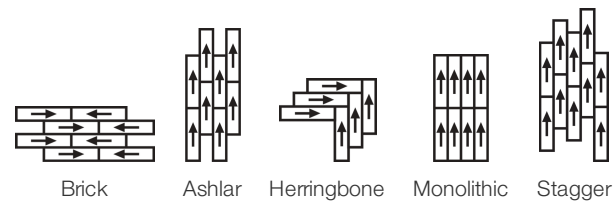


Prestatie

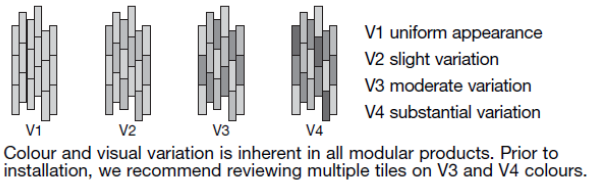
Ontvlambaarheid	EN 13501-1	Bfl-S1 (unadhered testing)
Warmteweerstand m² K/w	ISO 8302	0.020 m² K/W TOG 0.2
Elektrostatische Weerstand	EN 1815	≤ 2.0 kV (stroll test)
Slipweerstand	BS 7976-2	
	DIN 51130	R12 (shod ramp)
Dimensionale Stabiliteit	EN ISO 23999	≤0.15%
Stoel Met Wieltjes	EN 425, ISO 4918	continuous use
Resistance to Damage at Cut Edges	EN 1814	passed
Resterende Indeuking	EN ISO 24343-1	0.1 mm
Contactgeluidreductie	BS EN ISO 10140	ΔLw 6dB/17dB with 3mm underlay
Geluidsabsorptie	ISO 354	
Kleurvastheid Voor Licht	BS EN ISO 105-BO2	8
Emissies	ISO 16000	TVOC < 1000 µg/m3 after 28 days

15 Jaar Commercieel Beperkt subject to installation in full accordance with manufacturer's instructions and a regular effective cleaning and maintenance programme.

Aanbevolen Installatiemethode



colour and visual variation index



ΔLw 6dB/17dB with 3mm underlay

Corporate Headquarters +1 800 257 7429 | +1 706 532 7984 | Atlanta +1 404 853 7429 | Bengaluru +91 80 6773 0202 | Beijing +86 10 6568 588 | Chicago +1 312 467 1331 | Dubai +971 4 584 6956 | Hong Kong +852 2623 0371 | Latin America (Miami) +1 305 827 5912 | London +44 207 961 4120 | Los Angeles +1 800 233 1614 | Melbourne +61 3 9939 8543 | Mexico City +55 5010 7600 | Mumbai +91 22 6284 5050 | Nantong +86 400 800 7429 | New York +1 212 953 7429 | Paris +33 (0) 1 81 22 44 39 | San Francisco +1 415 955 1920 | Santiago +562 2431 5000 x 550 | São Paulo +55 11 3071 1702 | Shanghai +86 21 3338 4000 | Singapore +65 6733 1811 | Sydney +1 800 556 302

producttransparantie

Shaw Contract streeft ernaar klanten een bouwchemie te bieden die veilig en betrouwbaar is. Samen zullen wij u helpen om uw doelstellingen op het gebied van materiaalgezondheid te bereiken. Luxe Vinyl

Kenmerken + Certificeringen

Health Product Declaration (HPD)

Environmental Product Declaration (EPD)

Embodied Carbon (Cradle to Gate)

FloorScore®

CE-markering (EN 14041)

Total Recycled Content

land van herkomst

[1000 ppm Disclosure](#)[3de Partij Gecertificeerd in Overeenstemming Met ISO 14025, EN 15804, & ISO 21930:2017](#)**7.31 Kg Co₂/M²****Gecertificeerd****3de Partij Gecertificeerd****0% (Pre-Consumer 0% | Post-Consumer 0%)****South Korea**

WELL V2 Contribution Credit

X01 Fundamental Material Precautions
Part 1: (C): Restrict Asbestos PreconditionX08 Hazardous Material Reduction
Part 1: Limit Hazardous Materials OptimizationX10 Volatile Compound Reduction
Part 1 (A): Manage Volatile Organic Compounds (VOCs) OptimizationX10 Volatile Compound Reduction
Part 2: Manage Semi-Volatile Organic Compounds (SVOCs) OptimizationX11 Long Term Emissions Control
Part 2: Flooring Optimization**Absence of Asbestos****Absence of Heavy Metals****Absence of Halogenated Flame Retardants****Ortho-Phthalates****FloorScore Certificate**

Groen Leed Bijdragekrediet

"MR-krediet: Openbaarmaking en optimalisering van bouwproducten
Materiaal ingrediënten - Optie 1: Rapportage materiaal ingrediënten""MR-krediet: openbaarmaking en optimalisering van bouwproducten
Milieuproductverklaringen - Optie 1: Milieuproductverklaring (EPD)"

"EQ-krediet: materialen met lage emissie Optie 1: Berekeningen per productcategorie"

Health Product Declaration (HPD) | 100 Ppm Disclosure**3rd Party Certified in Accordance with ISO 14025, EN 15804, & ISO 21930:2017****FloorScore Certified**[Installation Guidelines](#)[Maintenance Guidelines](#)Please visit www.shawcontract.com for the most current warranty information.

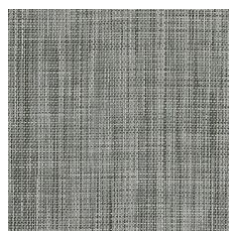
Specifications are subject to nominal manufacturing variance. Material supply and/or manufacturing processes may necessitate changes without notice.

This product is an exclusive design and may not be duplicated in any manner. Use of this design in the creation of another product design is also strictly prohibited.

*****Allowable spend is domestic (US) spend in categories in which we have diverse suppliers from which to choose. Compared to non-allowable spend which includes categories in which we do not have domestic, small or diverse suppliers available to meet our needs.

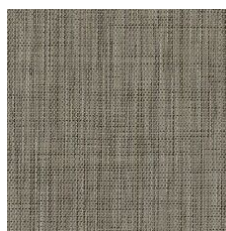
Visit shawcontract.com/testing for more information.

Lichtreflectiewaarde



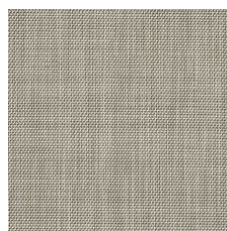
Hybrid 33100
LRV 20.4

V1 - Uniform Appearance



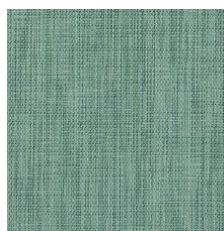
Structure 33150
LRV 18.9

V1 - Uniform Appearance



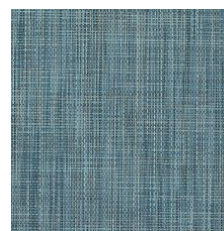
Minimal 33155
LRV 30.7

V1 - Uniform Appearance



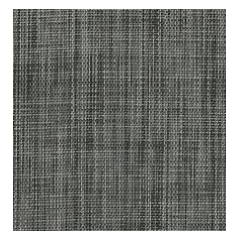
Essence 33340
LRV 22.7

V1 - Uniform Appearance



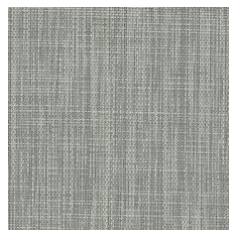
Energy 33405
LRV 16.4

V1 - Uniform Appearance



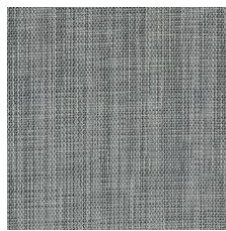
Carbon 33505
LRV 12.2

V1 - Uniform Appearance



Core 33515
LRV 32.7

V1 - Uniform Appearance



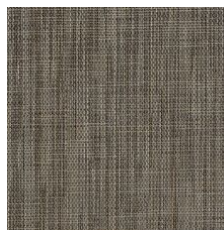
Metal 33530
LRV 20.7

V1 - Uniform Appearance



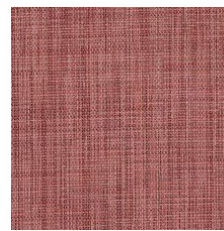
Industry 33751
LRV 14.9

V1 - Uniform Appearance



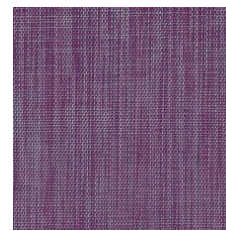
Element 33755
LRV 16.5

V1 - Uniform Appearance



Smart 33856
LRV 17.3

V1 - Uniform Appearance



Innovate 33991
LRV 17.1

V1 - Uniform Appearance

Color and Visual Variation Index

Shade and texture variation is inherent in all resilient products and can vary significantly from piece to piece. Samples should be used to assess color.

V1



Uniform Appearance

V2



Slight Variation

V3



Moderate Variation

V4



Substantial Variation

