

Tatami Sheet

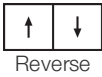
Collection	Terasu	
Style Number	0796V	
Welding Rod Style Number	353VS	
Construction	Commercial Heterogeneous Sheet With Fiberglass	
Class / ASTM F1303	Type I, Grade 1, Class B	
Backing Class	4-ply Fused Backing System	
Finish	ExoGuard®	
	U.S.	Metric
Wear Layer Thickness	20 mil (0.02 in)	0.51 mm
Overall Thickness	0.087 in	2.2 mm
Installation Type	Dry Back	
Recommended Adhesive	S150-95 Resilient Tile Spray, 4200 Resilient Sheet 1 Gallon, 4200 Resilient Sheet 4 Gallon, 2200 Semi-Wet Resilient 4 Gallon Pail, or 4151 Multi-Use Premium 4 Gallon	

Packaging

Actual Roll Size	6.56 ft w x 68.58 ft l	2.00 m w x 20.90 m l
Area per Roll	50.75 sy/roll	42.43 sq m/roll
Weight per Roll	337.7 lbs	153.18 kg



Recommended Installation Method



Coordinating Products

- Sheet: Reed Sheet, Roji Sheet
- LVT: Terrace 2.5 Mm, Terrace 5.0 Mm
- Carpet Tile: Botan Tile, Hana Tile, Kusa Tile
- Broadloom: Botan, Hana, Kusa

Performance + Testing

Static Load (ASTM F970)	Passes (Modified), *2000 lbs	*This test is intended to compare relative properties of different styles and constructions. Results are based on a laboratory test and used for comparative purposes - real life load limit may vary.
Residual Indentation (ASTM F1914)	Passes	
Flexibility (ASTM F137)	Passes	
Resistance to Heat (ASTM F1514)	Passes	
Resistance to Light (ASTM F1515)	Passes	
Resistance to Chemicals (ASTM F925)	Passes	
Radiant Panel (ASTM E648)	Passes, Class I	
Coefficient of Friction (ASTM D2047, Slip Resistance)	>0.6, meets the recommended static coefficient of friction for ADA walking surfaces and accessible routes	
Test Reports may be included or listed by the manufacturing/inventory style number as opposed to the noted selling style number.		

Warranties

- 15 Year Commercial Limited Warranty
- Commercial 15 Year Underbed Bond Warranty

Diversity & Inclusion

We promote supplier participation that is reflective of Shaw Industries' diverse customer base and local community. We believe having a strong Supplier Diversity Program is strategic for bringing more innovation to our businesses and opening new markets for growth.

Material Health & Environmental Certifications

Health & Wellbeing	
Indoor Air Quality	FloorScore® Certified
Climate Impact	
Environmental Product Declaration (EPD)	3rd Party Certified in Accordance with ISO 14025, EN 15804, & ISO 21930:2017
Embodied Carbon (Cradle to Gate)	9.4 Kg Co ₂ /M ²
Total Recycled Content	0% (Pre-Consumer 0% Post-Consumer 0%)
Global Product Assessment	GSA Approved CE Marking (EN 14041) 3rd Party Certified Country of Origin Imported

WELL V2 Contribution Credit

X01 Fundamental Material Precautions Part 1: (C): Restrict Asbestos Precondition	Absence of Asbestos
X08 Hazardous Material Reduction Part 1: Limit Hazardous Materials Optimization	Absence of Heavy Metals
X10 Volatile Compound Reduction Part 1 (A): Manage Volatile Organic Compounds (VOCs) Optimization	Absence of Halogenated Flame Retardants
X10 Volatile Compound Reduction Part 2: Manage Semi-Volatile Organic Compounds (SVOCs) Optimization	Ortho-Phthalates
X11 Long Term Emissions Control Part 2: Flooring Optimization	FloorScore Certificate

Leed v4 Contribution Credits

MR Credit: Building Product Disclosure and Optimization
Environmental Product Declarations - Option 1: Environmental Product Declaration (EPD)

EQ Credit: Low Emitting Materials
Option 1: Product Category Calculations

[Installation Guidelines](#)

[Maintenance Guidelines](#)

3rd Party Certified in Accordance with ISO 14025, EN 15804, & ISO 21930:2017

FloorScore Certified

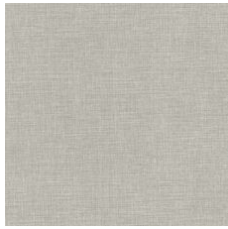
Please visit www.shawcontract.com for the most current warranty information.

Specifications are subject to nominal manufacturing variance. Material supply and/or manufacturing processes may necessitate changes without notice.

This product is an exclusive design and may not be duplicated in any manner. Use of this design in the creation of another product design is also strictly prohibited.

Visit shawcontract.com/testing for more information.

Available Colorways



Pebble 96114
Weldrod 07332



Evening Glow 96130
Weldrod 07331



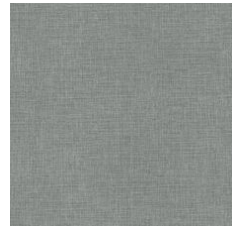
Tea Garden 96216
Weldrod 07332



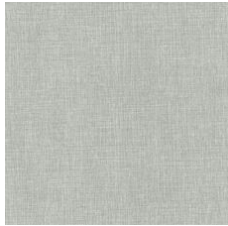
Moss 96330
Weldrod 07332



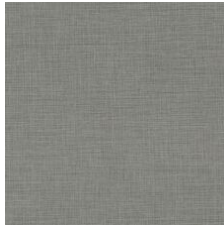
Cascade 96416
Weldrod 05008



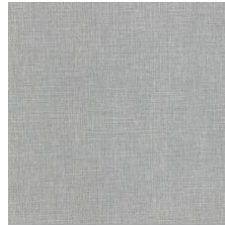
Tidal Basin 96440
Weldrod 02003



Zen 96515
Weldrod 01203



Wind Chime 96530
Weldrod 01225



Stroll 96535
Weldrod 01203



Stepping Stone 96700
Weldrod 02001



Pagoda 96710
Weldrod 05244



Shakkei 96761
Weldrod 02001

