

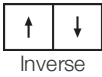
Tatami Sheet

Collection	Terasu	
Numéro De Style	0796V	
Référence De La Baguette De Soudure	353VS	
Construction	Rouleau Hétérogène Commerciale	
classe	Type I, Grade 1, Class B	
Classe d'Endos	Endos fusionné à 4 plis	
Finition	ExoGuard®	
	Impérial	Métrique
Épaisseur De La Couche d'Usure	20 mil (0.02 in)	0.51 mm
Épaisseur Générale Du Produit	0.087 in	2.2 mm
Installation Type	Dry Back	
Adhésif Recommandé	S150-95 Resilient Sheet Spray, 4200 Resilient Sheet 1 Gallon, 4200 Resilient Sheet 4 Gallon, 2200 Semi-Wet Resilient Sheet or 4151 Multi-Use Premium	

Emballage

Dimensions Réelles Du Rouleau	6.56 ft w x 68.58 ft l	2.00 m w x 20.90 m l
Surface Par Rouleau	50.75 sy/roll	42.43 sq m/roll
Poids Par Rouleau	337.7 lbs	153.18 kg

Méthodes d'Installation Conseillées



Coordination Des Produits

- Sheet: Reed Sheet, Roji Sheet
- LVT: Terrace 2.5 Mm, Terrace 5.0 Mm
- Carpet Tile: Botan Tile, Hana Tile, Kusa Tile
- Broadloom: Botan, Hana, Kusa

performance + Tests et essai

poinçonnement rémanent (ASTM F1914)	Passes
Flexibility (ASTM F137)	Passes
résistance à la chaleur (ASTM F1514)	Passes
résistance à la lumière (ASTM F1515)	Passes
résistance chimique (ASTM F925)	Passes
Essai au panneau radiant (Astm E648)	Passes, Class I
coefficient de frottement (ASTM D2407, résistance au glissement)	>0.6, meets the recommended static coefficient of friction for ADA walking surfaces and accessible routes

Test Reports may be included or listed by the manufacturing/inventory style number as opposed to the noted selling style number.

Garanties

[Limitée Commerciale De 15 Ans](#)  
[Commercial 15 Year Underbed Bond Warranty](#)

Diversity & Inclusion

We promote supplier participation that is reflective of Shaw Industries' diverse customer base and local community. We believe having a strong Supplier Diversity Program is strategic for bringing more innovation to our businesses and opening new markets for growth.

Attributs + Certifications

Health & Wellbeing	
Indoor Air Quality	FloorScore®   Agréé
Climate Impact	
Environmental Product Declaration (EPD)	Certifié Par Une Tierce Partie Conformément Aux Normes ISO 14025, EN 15804 Et ISO 21930:2017
Embodied Carbon (Cradle to Gate)	9.4 Kg Co <sub>2</sub> /M <sup>2</sup>
Total Recycled Content	0% (Pre-Consumer 0%   Post-Consumer 0%)
Global Product Assessment	CE Marking (EN 14041)   Certifié Par Un Tiers
	Country of Origin   Imported

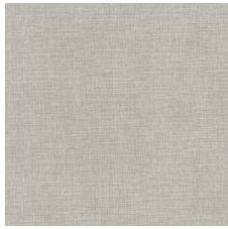
WELL V2 Contribution Credit

X01 Fundamental Material Precautions Part 1: (C): Restrict Asbestos Precondition	<b>Absence of Asbestos</b>
X08 Réduction des matières dangereuses Partie 1 : Optimisation des limites des matières dangereuses – 1 pt	<b>Absence of Heavy Metals</b>
X10 Réduction des composés volatils Partie 1 (A) : Gérer l'optimisation des composés organiques volatils (COV) - 1 pt	<b>Absence of Halogenated Flame Retardants</b>
Partie 2 : Gérer l'optimisation des composés organiques semi-volatils (COSV) - 1 pt	<b>Ortho-Phthalates</b>
X11 Contrôle des émissions à long terme Partie 2 : Optimisation des revêtements de sol – 1 pt	<b>FloorScore Certificate</b>

Contribution Au Certificat Vert Leed

« Crédit MR : Divulgateion et optimisation des produits de construction	<b>3rd Party Certified in Accordance with ISO 14025, EN 15804, &amp; ISO 21930:2017</b>
Crédit EQ : matériaux faibles émissions	<b>FloorScore Certified</b>
<a href="#">Installation Guidelines</a>	Please visit <a href="http://www.shawcontract.com">www.shawcontract.com</a> for the most current warranty information.
<a href="#">Maintenance Guidelines</a>	Specifications are subject to nominal manufacturing variance. Material supply and/or manufacturing processes may necessitate changes without notice.
	This product is an exclusive design and may not be duplicated in any manner. Use of this design in the creation of another product design is also strictly prohibited.
	Visit <a href="http://shawcontract.com/testing">shawcontract.com/testing</a> for more information.

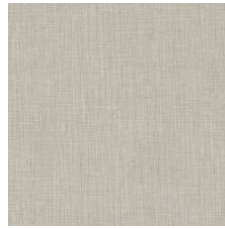
## Available Colorways



Pebble 96114  
Weldrod 07332



Evening Glow 96130  
Weldrod 07331



Tea Garden 96216  
Weldrod 07332



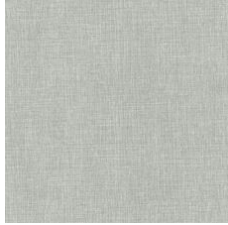
Moss 96330  
Weldrod 07332



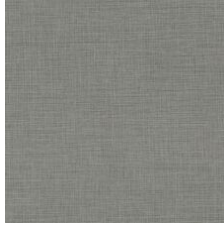
Cascade 96416  
Weldrod 05008



Tidal Basin 96440  
Weldrod 06303



Zen 96515  
Weldrod 01203



Wind Chime 96530  
Weldrod 01225



Stroll 96535  
Weldrod 01203



Stepping Stone 96700  
Weldrod 02001



Pagoda 96710  
Weldrod 05244



Shakkei 96761  
Weldrod 02001

