

## Roji Sheet

Collection	<b>Terasu</b>	
Style Number	<b>0798V</b>	
Welding Rod Style Number	<b>353VS</b>	
Construction	<b>Commercial Heterogeneous Sheet With Fiberglass</b>	
class	<b>Type I, Grade 1, Class B</b>	
Backing Class	<b>4-ply fused backing system</b>	
Finish	<b>ExoGuard®</b>	
	U.s.	Metric
Wear Layer Thickness	<b>20 mil (0.02 in)</b>	<b>0.51 mm</b>
Overall Product Thickness	<b>0.087 in</b>	<b>2.2 mm</b>
Recommended Adhesive	<b>S150-95 Resilient Tile Spray, 4200 Resilient Sheet 1 Gallon, 4200 Resilient Sheet 4 Gallon, 2200 Semi-Wet Resilient 4 Gallon Pail, or 4151 Multi-Use Premium 4 Gallon</b>	

### Packaging

Actual Roll Size	<b>6.56 ft w x 68.58 ft l</b>	<b>2.00 m w x 20.90 m l</b>
Area Per Roll	<b>50.75 sy/roll</b>	<b>42.43 sq m/roll</b>
Weight Per Roll	<b>337.7 lbs</b>	<b>153.18 kg</b>



### Recommended Installation Method



Reverse

### Coordinating Products

- Sheet: Tatami Sheet, Reed Sheet
- LVT: Terrace 2.5 Mm, Terrace 5.0 Mm
- Carpet Tile: Botan Tile, Hana Tile, Kusa Tile
- Broadloom: Botan, Hana, Kusa

performance + testing

residual indentation (ASTM F1914)	Passes
Flexibility (ASTM F137)	Passes
resistance to heat (ASTM F1514)	Passes
resistance to light (ASTM F1515)	Passes
resistance to chemicals (ASTM F925)	Passes
radiant panel (ASTM E648)	Passes, Class I
coefficient of friction (ASTM D2407, slip resistance)	>0.6, meets the recommended static coefficient of friction for ADA walking surfaces and accessible routes
Test Reports may be included or listed by the manufacturing/inventory style number as opposed to the noted selling style number.	

Warranties

- 15 Year Commercial Limited
- Commercial 15 Year Underbed Bond Warranty

Diversity & Inclusion

We believe all humans are equal. Individually and collectively, we need to proactively create and promote opportunities that give everybody an equal footing in life. We nurture an environment where every voice and perspective can be heard, and proactively promote accessibility and inclusivity inside our network and beyond. One proof point is our ability to meet the criteria of the Social Fairness pillar of the Cradle to Cradle Product Standard. At Shaw Industries, we promote supplier participation that is reflective of Shaw’s diverse customer base and local community. More than 42% of our spend\*\*\*\*\* is with small and diverse businesses. We believe having a strong Supplier Diversity Program is strategic for bringing more innovation to our businesses and openingnew markets for growth.

Attributes + Certifications

Health & Wellbeing	
Material Ingredient Transparency	Health Product Declaration (HPD)   1000 ppm Disclosure
Indoor Air Quality	FloorScore®   Certified
Climate Impact	
Environmental Product Declaration (EPD)	3rd Party Certified in Accordance with ISO 14025, EN 15804, & ISO 21930:2017
Total Recycled Content	0% (Pre-Consumer 0%   Post-Consumer 0%)
Global Product Assessment	CE Marking (EN 14041)   3rd Party Certified
	Country of Origin   Imported

WELL V2 Contribution Credit

X01 Fundamental Material Precautions Part 1: (C): Restrict Asbestos Precondition	Absence of Asbestos
X08 Hazardous Material Reduction Part 1: Limit Hazardous Materials Optimization – 1 pt	Absence of Heavy Metals
X10 Volatile Compound Reduction Part 1 (A): Manage Volatile Organic Compounds (VOCs) Optimization – 1 pt	Absence of Halogenated Flame Retardants
Part 2: Manage Semi-Volatile Organic Compounds (SVOCs) Optimization – 1 pt	Ortho-Phthalates
X11 Long Term Emissions Control Part 2: Flooring Optimization – 1 pt	FloorScore Certificate

## Green Leed Contribution Credit

MR Credit: Building Product Disclosure and Optimization  
Environmental Product Declarations - Option 1: Environmental Product Declaration (EPD)

EQ Credit: Low Emitting Materials  
Option 1: Product Category Calculations

[Installation Guidelines](#)

[Maintenance Guidelines](#)

**3rd Party Certified in Accordance with ISO 14025, EN 15804, & ISO 21930:2017**

**FloorScore® Certified**

Please visit [www.shawcontract.com](http://www.shawcontract.com) for the most current warranty information.

Specifications are subject to nominal manufacturing variance. Material supply and/or manufacturing processes may necessitate changes without notice.

This product is an exclusive design and may not be duplicated in any manner. Use of this design in the creation of another product design is also strictly prohibited.

\*\*\*\*\*Allowable spend is domestic (US) spend in categories in which we have diverse suppliers from which to choose. Compared to non-allowable spend which includes categories in which we do not have domestic, small or diverse suppliers available to meet our needs.

Visit [shawcontract.com/testing](http://shawcontract.com/testing) for more information.

## Available Colorways



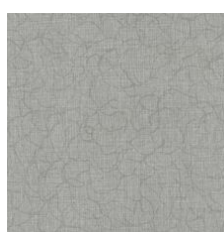
Pebble 96114  
Weldrod 07332



Tea Garden 96216  
Weldrod 07332



Zen 96515  
Weldrod 01203



Stroll 96535  
Weldrod 02012



Stepping Stone 96700  
Weldrod 12155



Pagoda 96710  
Weldrod 05244



Corporate Headquarters +1 800 257 7429 | +1 706 532 7984 | Atlanta +1 404 853 7429 | Bengaluru +91 80 6773 0202 | Beijing +86 10 6568 588 | Chicago +1 312 467 1331 | Dubai +971 4 584 6956 | Hong Kong +852 2623 0371 | London +44 207 961 4120 | Los Angeles +1 800 233 1614 | Melbourne +61 3 9939 8543 | Mexico City +55 5010 7600 | Mumbai +91 22 6284 5050 | Nantong +86 400 800 7429 | New York +1 212 953 7429 | Paris +33 (0) 1 81 22 44 39 | San Francisco +1 415 955 1920 | Shanghai +86 21 3338 4000 | Singapore +65 6733 1811 | Sydney +61 800 556 302

© 2025 Shaw Industries Group, Inc., a Berkshire Hathaway Company  
April 5, 2025

3 of 3