

Emerge

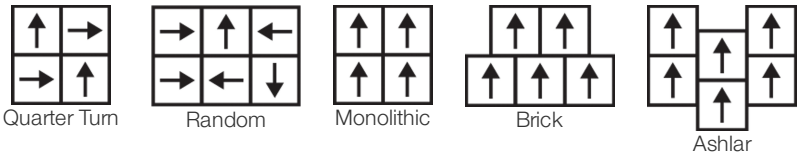
| | | |
|----------------------------|--|-------------------------|
| Coleção | Noble Materials | |
| Número Do Produto | 0618V | |
| Construção | Heavy Commercial Luxury Vinyl Tile | |
| classe | Class III, Type B | |
| Acabamento | ExoGuard® | |
| | U.s. | Metric |
| Dimensões Nominais | 24 in w x 24 in l | 60 cm w x 60 cm l |
| Dimensões Reais | 23.62 in w x 23.62 in l | 59.99 cm w x 59.99 cm l |
| Espessura Da Camada De Uso | 20 mil (0.02 in) | 0.51 mm |
| Espessura Total Do Produto | 0.098 in | 2.5 mm |
| Perfil De Borda | Borda Quadrada | |
| Installation Type | Dry Back | |
| Instalação | Direct Glue | |
| Adesivo Recomendado | S150-95 Resilient Tile Spray, , 4200 Resilient Tile 4 Gallon, 2200 Semi-Wet Resilient 4 Gallon Pail, 2200 Semi-Wet Resilient 1 Gallon Pail, or 4151 Multi-Use Premium 4 Gallon | |



Empacotamento

| | | |
|-----------------|-------------|-----------|
| Peças Por Caixa | 17 pcs | |
| Área Por Caixa | 65.88 sq ft | 6.12 sq m |
| Peso Por Caixa | 57.9 lbs | 26.26 kg |

Método De Instalação Recomendado



Produtos Coordenados

Carpet Tile: Slab Tile, Honed Tile, Alchemy Tile, Form Tile
Broadloom: Monolith Woven, Base Metal Woven, Strata, Fault

desempenho + teste

| | |
|---|---|
| recuo residual (ASTM F1914) | Passes |
| resistência ao calor (ASTM F1514) | Passes |
| resistência à luz (ASTM F1515) | Passes |
| resistência a produtos químicos (ASTM F925) | Passes |
| painel radiante (ASTM E648) | Passes, Class I |
| coeficiente de atrito (ASTM D2407, resistência ao deslizamento) | >0.6, meets the recommended static coefficient of friction for ADA walking surfaces and accessible routes |

Test Reports may be included or listed by the manufacturing/inventory style number as opposed to the noted selling style number.

Garantias

[Commercial 15 Year Underbed Bond Warranty](#)
[15 Anos Comercial Limitada](#)

Diversity & Inclusion

We promote supplier participation that is reflective of Shaw Industries' diverse customer base and local community. We believe having a strong Supplier Diversity Program is strategic for bringing more innovation to our businesses and opening new markets for growth.

Atributos + Certificações

Health & Wellbeing

Material Ingredient Transparency
Indoor Air Quality

[Health Product Declaration \(HPD\) | 1000 ppm Disclosure](#)
[FloorScore® | Certificado](#)

Climate Impact

Environmental Product Declaration (EPD)

Embodied Carbon (Cradle to Gate)
Life-Cycle Carbon Emissions
Total Recycled Content

[3rd Party Certified De Acordo Com ISO 14025, EN 15804, & ISO 21930:2017](#)
6.05 Kg CO₂/M²
Low Embodied Carbon
0% (Pre-Consumer 0% | Post-Consumer 0%)

Global Product Assessment

[CE Marking \(EN 14041\) | Certificado 3rd Party](#)
[Country of Origin | Imported](#)

WELL V2 Contribution Credit

X01 Fundamental Material Precautions Part 1: (C): Restrict Asbestos Precondition
X08 Hazardous Material Reduction Part 1: Limit Hazardous Materials Optimization – 1 pt
X10 Volatile Compound Reduction Part 1 (A): Manage Volatile Organic Compounds (VOCs) Optimization – 1 pt
Part 2: Manage Semi-Volatile Organic Compounds (SVOCs) Optimization – 1 pt
X11 Long Term Emissions Control Part 2: Flooring Optimization – 1 pt

Absence of Asbestos
Absence of Heavy Metals
Absence of Halogenated Flame Retardants

Ortho-Phthalates
FloorScore Certificate

Crédito De Contribuição

MR Credit: Divulgação e otimização de produtos de construção
Ingredientes materiais - Opção 1: Relatório de ingredientes materiais
MR Credit: Divulgação e otimização de produtos de construção
Declarações ambientais do produto - Opção 1: Declaração ambiental do produto (EPD)
Crédito de EQ: Materiais de baixa emissão
Opção 1: cálculos de categoria de produto

Health Product Declaration (HPD) | 100 Ppm Disclosure

3rd Party Certified in Accordance with ISO 14025, EN 15804, & ISO 21930:2017
FloorScore® Certified

[Installation Guidelines](#)
[Maintenance Guidelines](#)

Please visit www.shawcontract.com for the most current warranty information.
Specifications are subject to nominal manufacturing variance. Material supply and/or manufacturing processes may necessitate changes without notice.

This product is an exclusive design and may not be duplicated in any manner. Use of this design in the creation of another product design is also strictly prohibited.

Visit shawcontract.com/testing for more information.

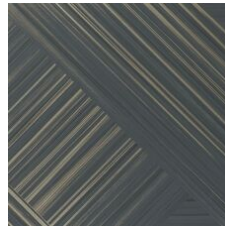
Available Colorways



Carrara Silver 18100
V2 - Slight Variation



Alabaster Gold 18111
V2 - Slight Variation



Colossal Bismut 18496
V2 - Slight Variation



Onyx Silver 18505
V2 - Slight Variation



Element Platinu 18506
V2 - Slight Variation



Forge Platinum 18518
V2 - Slight Variation



Talc Platinum 18535
V2 - Slight Variation



Cornerstone Cop 18555
V2 - Slight Variation



Slate Palladium 18595
V2 - Slight Variation

Color and Visual Variation Index

Shade and texture variation is inherent in all resilient products and can vary significantly from piece to piece. Samples should be used to assess color.

V1



Uniform Appearance

V2



Slight Variation

V3



Moderate Variation

V4



Substantial Variation

