

Cut

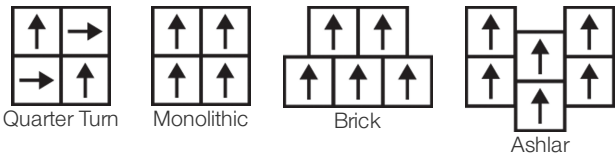
Collection	Natural Choreography	
Numéro De Style	0922V	
Construction	Carreau De Vinyle De Luxe Commercial Lourd Avec Fibre De Verre	
classe	Class III, Type B	
Finition	ExoGuard®	
	Impérial	Métrique
Dimensions Nominales	18 in w x 18 in l	46 cm w x 46 cm l
Dimensions Réelles	18.00 in w x 18.00 in l	45.72 cm w x 45.72 cm l
Épaisseur De La Couche d'Usure	20 mil (0.02 in)	0.51 mm
Épaisseur Générale Du Produit	0.197 in	5 mm
Profil Du Bord	Bord Carré	
Installation Type	Dry Back	
Installation	Direct Glue	
Adhésif Recommandé	S150-95 Resilient Tile Spray, 4200 Resilient Tile 4 Gallon, 2200 Semi-Wet Resilient 4 Gallon Pail, 2200 Semi-Wet Resilient 1 Gallon Pail or 4151 Multi-Use Premium 4 Gallon	



Emballage

Pièces Par Carton	10 pcs	
Surface Par Carton	22.5 sq ft	2.09 sq m
Poids Par Carton	30.86 lbs	14 kg

Méthodes d'Installation Conseillées



performance + Tests et essai

résistance à la chaleur (ASTM F1514)	Passes
résistance à la lumière (ASTM F1515)	Passes
résistance chimique (ASTM F925)	Passes
Essai au panneau radiant (Astm E648)	Passes, Class I
coefficient de frottement (ASTM D2407, résistance au glissement)	≥0.5, meets the recommended static coefficient of friction for ADA walking surfaces

Test Reports may be included or listed by the manufacturing/inventory style number as opposed to the noted selling style number.

Garanties

[Commercial 15 Year Underbed Bond Warranty](#)
[Limitée Commerciale De 15 Ans](#)

Diversity & Inclusion

We promote supplier participation that is reflective of Shaw Industries' diverse customer base and local community. We believe having a strong Supplier Diversity Program is strategic for bringing more innovation to our businesses and opening new markets for growth.

Attributs + Certifications

Health & Wellbeing	
Material Ingredient Transparency	Health Product Declaration (HPD) 1000 ppm Disclosure
Indoor Air Quality	FloorScore® Agréé
Climate Impact	
Environmental Product Declaration (EPD)	Certifié Par Une Tierce Partie Conformément Aux Normes ISO 14025, EN 15804 Et ISO 21930:2017
Embodied Carbon (Cradle to Gate)	11.59 Kg Co ₂ /M ²
Total Recycled Content	0% (Pre-Consumer 0% Post-Consumer 0%)
Global Product Assessment	Country of Origin Imported

WELL V2 Contribution Credit

X01 Fundamental Material Precautions Part 1: (C): Restrict Asbestos Precondition	Absence of Asbestos
X08 Réduction des matières dangereuses Partie 1 : Optimisation des limites des matières dangereuses – 1 pt	Absence of Heavy Metals
X10 Réduction des composés volatils Partie 1 (A) : Gérer l'optimisation des composés organiques volatils (COV) - 1 pt	Absence of Halogenated Flame Retardants
Partie 2 : Gérer l'optimisation des composés organiques semi-volatils (COSV) - 1 pt	Ortho-Phthalates
X11 Contrôle des émissions à long terme Partie 2 : Optimisation des revêtements de sol – 1 pt	FloorScore Certificate

Contribution Au Certificat Vert Leed

« Crédit MR : Divulgation et optimisation des produits de construction	Health Product Declaration (HPD) 100 Ppm Disclosure
« Crédit MR : Divulgation et optimisation des produits de construction	3rd Party Certified in Accordance with ISO 14025, EN 15804, & ISO 21930:2017
Crédit EQ : matériaux faibles émissions	FloorScore Certified
Installation Guidelines	Please visit www.shawcontract.com for the most current warranty information.
Maintenance Guidelines	Specifications are subject to nominal manufacturing variance. Material supply and/or manufacturing processes may necessitate changes without notice.
	This product is an exclusive design and may not be duplicated in any manner. Use of this design in the creation of another product design is also strictly prohibited.
	Visit shawcontract.com/testing for more information.

Available Colorways



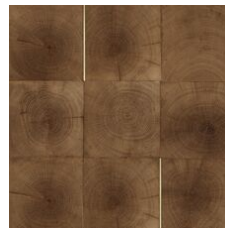
Ecu 22103
LRV 29.7 | L* 61.38
V2 - Slight Variation



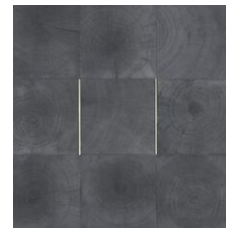
Mushroom 22155
LRV 21.7 | L* 53.72
V2 - Slight Variation



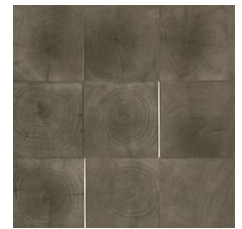
Talc 22174
LRV 24.7 | L* 56.74
V2 - Slight Variation



Honey 22280
LRV 16.1 | L* 47.13
V2 - Slight Variation



Charcoal 22549
LRV 11.3 | L* 40.13
V2 - Slight Variation



Ash 22599
LRV 16.1 | L* 47.04
V2 - Slight Variation



Cacao 22704
LRV 8.4 | L* 34.77
V2 - Slight Variation



Sienna 22760
LRV 8.8 | L* 35.66
V2 - Slight Variation

Color and Visual Variation Index

Shade and texture variation is inherent in all resilient products and can vary significantly from piece to piece. Samples should be used to assess color.

V1



Uniform Appearance

V2



Slight Variation

V3



Moderate Variation

V4



Substantial Variation

