

Cove

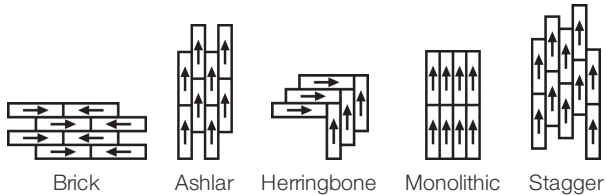
수집	Unite	
스타일 번호	0927V	
구성	섬유 유리를 가진 헤비급 상업적인 고급 비닐 도와	
수업	Class III, Type B	
끝	ExoGuard®	
	미국	미터법
공칭 치수	9 in w x 48 in l	23 cm w x 122 cm l
실제 치수	9.00 in w x 48.00 in l	22.86 cm w x 121.92 cm l
마모 층 두께	20 mil (0.02 in)	0.51 mm
전체 제품 두께	0.197 in	5 mm
가장자리 프로파일	사각형 모서리	
Installation Type	Loose Lay	
설치	Direct Glue Or Perimeter Glue	
권장 접착제	S150-95 Resilient Tile Spray, 4200 Resilient Tile 4 Gallon, 2200 Resilient Tile 4 Gallon or 4151 Multi-Use Premium 4 Gallon	

포장

상자 당 조각	8 pcs	
상자 당 면적	24 sq ft	2.23 sq m
상자 당 무게	41.75 lbs	18.94 kg



권장 설치 방법



공연 + 테스트

잔차 들어 쓰기 (Astm F1914)
 내열성 (Astm F1514)
 내광성 (Astm F1515)
 화학 물질에 대한 내성 (Astm F925)
 마찰 계수 (astm D2407, 미끄러짐 저항)

Passes

Passes

Passes

Passes

≥0.5, meets the recommended static coefficient of friction for ADA walking surfaces

Test Reports may be included or listed by the manufacturing/inventory style number as opposed to the noted selling style number.

보증

15년 상용 제한

[Commercial 15 Year Underbed Bond Warranty](#)

Diversity, Equity & Inclusion

We believe all humans are equal. Individually and collectively, we need to proactively create and promote opportunities that give everybody an equal footing in life. We nurture an environment where every voice and perspective can be heard, and proactively promote accessibility and inclusivity inside our network and beyond. One proof point is our ability to meet the criteria of the Social Fairness pillar of the Cradle to Cradle Product Standard. At Shaw Industries, we promote supplier participation that is reflective of Shaw's diverse customer base and local community. More than 42% of our spend***** is with small and diverse businesses. We believe having a strong Supplier Diversity Program is strategic for bringing more innovation to our businesses and opening new markets for growth.

속성 + 인증

Health & Wellbeing

Material Ingredient Transparency

Health Product Declaration (HPD) | 1000 ppm Disclosure

Climate Impact

Environmental Product Declaration (EPD)

Embodied Carbon (Cradle to Gate)

Total Recycled Content

ISO 14025, EN 15804 및 ISO 21930:2017에 따라 타사 인증 획득

7.31 Kg CO₂/M²

0% (Pre-Consumer 0% | Post-Consumer 0%)

Global Product Assessment

FloorScore® | 인증

Country of Origin | Imported

녹색의 공헌 기여 크레딧

MR 크레딧 : 제품 공개 및 최적화 구축
재료 성분-옵션 1 : 재료 성분보고

MR 크레딧 : 제품 공개 및 최적화 구축
환경 제품 선언-옵션 1 : 환경 제품 선언 (EPD)

EQ 크레딧 : 저 발광 재료
옵션 1 : 제품 범주 계산

[Installation Guidelines](#)

[Maintenance Guidelines](#)

Health Product Declaration (HPD) | 100 Ppm Disclosure

3rd Party Certified in Accordance with ISO 14025, EN 15804, & ISO 21930:2017

FloorScore Certified

Please visit www.shawcontract.com for the most current warranty information. Specifications are subject to nominal manufacturing variance. Material supply and/or manufacturing processes may necessitate changes without notice.

This product is an exclusive design and may not be duplicated in any manner. Use of this design in the creation of another product design is also strictly prohibited. *****Allowable spend is domestic (US) spend in categories in which we have diverse suppliers from which to choose. Compared to non-allowable spend which includes categories in which we do not have domestic, small or diverse suppliers available to meet our needs.

Visit shawcontract.com/testing for more information.

Available Colorways



Plaster 27111
LRV 53.2
V2 - Slight Variation



Lure 27201
LRV 49.4
V2 - Slight Variation



Graze 27326
LRV 31.5
V2 - Slight Variation



Jade 27405
LRV 20.8
V2 - Slight Variation



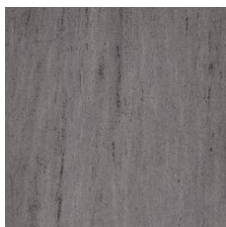
Wash 27436
LRV 23.7
V2 - Slight Variation



Sapphire 27486
LRV 17.2
V2 - Slight Variation



Silt 27504
LRV 31.9
V2 - Slight Variation



Caster 27518
LRV 23.2
V2 - Slight Variation



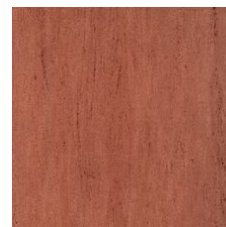
Gesso 27520
LRV 35.6
V2 - Slight Variation



Pour 27530
LRV 21.9
V2 - Slight Variation



Cornerstone 27585
LRV 13.5
V2 - Slight Variation



Stoke 27855
LRV 19.7
V2 - Slight Variation

Color and Visual Variation Index

Shade and texture variation is inherent in all resilient products and can vary significantly from piece to piece. Samples should be used to assess color.

V1



Uniform Appearance

V2



Slight Variation

V3



Moderate Variation

V4



Substantial Variation

