

Joy Squared

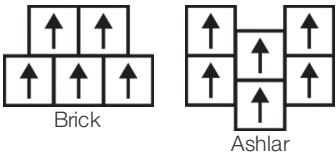
Colección	Joy Squared	
Número De Estilo	0993V	
Construcción	Heavy Commercial Luxury Vinyl Tile	
clase	Class III, Type B	
Terminación	ExoGuard+®	
	U.s.	Metric
Dimensiones Nominales	24 in w x 24 in l	61 cm w x 61 cm l
Dimensiones Reales	24.00 in w x 24.00 in l	60.96 cm w x 60.96 cm l
Desgaste De La Capa De Uso	20 mil (0.02 in)	0.51 mm
Espesor Total Del Producto	0.098 in	2.5 mm
Perfil De Borde	Borde Cuadrado	
Installation Type	Dry Back	
Instalación	Direct Glue	
Adhesivo Recomendado	S150-95 Resilient Tile Spray, , 4200 Resilient Tile 4 Gallon, 2200 Semi-Wet Resilient 4 Gallon Pail, 2200 Semi-Wet Resilient 1 Gallon Pail, or 4151 Multi-Use Premium 4 Gallon	



Embalaje

Piezas Por Caja	17 pcs	
Área Por Caja	68 sq ft	6.32 sq m
Peso Por Caja	57.79 lbs	26.21 kg

Método De Instalación Recomendado



Productos Que Combinan

LVT: Joy Squared 12x48

desempeño + pruebas

carga estática (ASTM F970)	Passes (Modified), *1500 lbs	*This test is intended to compare relative properties of different styles and constructions. Results are based on a laboratory test and used for comparative purposes - real life load limit may vary.
resistencia al calor (ASTM F1514)	Passes	
resistencia a la luz (ASTM F1515)	Passes	
resistencia a productos químicos (ASTM F925)	Passes	
panel radiante (ASTM E648)	Passes, Class I	
coeficiente de fricción (ASTM D2407, resistencia al deslizamiento)	≥0.5, meets the recommended static coefficient of friction for ADA walking surfaces	

Test Reports may be included or listed by the manufacturing/inventory style number as opposed to the noted selling style number.

Garantías

[15 Años Limitado A Uso Comercial](#)
[Commercial 15 Year Underbed Bond Warranty](#)

Diversity & Inclusion

We promote supplier participation that is reflective of Shaw Industries' diverse customer base and local community. We believe having a strong Supplier Diversity Program is strategic for bringing more innovation to our businesses and opening new markets for growth.

Atributos + Certificaciones

Health & Wellbeing

Material Ingredient Transparency
Indoor Air Quality

Health Product Declaration (HPD) | 1000 ppm Disclosure
FloorScore® | Certificado

Climate Impact

Environmental Product Declaration (EPD)

Embodied Carbon (Cradle to Gate)
Total Recycled Content

Certificado Tercerizado De Acuerdo Con La Norma ISO 14025, EN 15804, & ISO 21930:2017
9.59 Kg CO₂/M²
30% (Pre-Consumer 30% | Post-Consumer 0%)

Global Product Assessment

Environmental Guarantee* | Through Our Environmental Guarantee, Shaw Pledges to Transport And Recycle Any Shaw Manufactured Resilient Within The United States And Canada At No Cost To The Customer.
CE Marking (EN 14041) | Certificado Tercerizado
Country of Origin | United States

WELL V2 Contribution Credit

X01 Fundamental Material Precautions Part 1: (C): Restrict Asbestos Precondition
X08 Hazardous Material Reduction Part 1: Limit Hazardous Materials Optimization – 1 pt
X10 Volatile Compound Reduction Part 1 (A): Manage Volatile Organic Compounds (VOCs) Optimization – 1 pt
Part 2: Manage Semi-Volatile Organic Compounds (SVOCs) Optimization – 1 pt
X11 Long Term Emissions Control Part 2: Flooring Optimization – 1 pt

Absence of Asbestos
Absence of Heavy Metals
Absence of Halogenated Flame Retardants

Ortho-Phthalates
FloorScore Certificate

Contribución Para Créditos Leed

Crédito MR: Divulgación y optimización de productos de construcción
Ingredientes de materiales - Opción 1: Informe de ingredientes de los materiales

Crédito MR: Divulgación y optimización de productos de construcción
Declaraciones ambientales de productos - Opción 1: Declaración ambiental de productos (EPD)

Crédito EQ: Materiales de baja emisión
Opción 1: Cálculos de categoría de producto

Health Product Declaration (HPD) | 100 Ppm Disclosure

3rd Party Certified in Accordance with ISO 14025, EN 15804, & ISO 21930:2017

FloorScore® Certified

Información Adicional

* To learn more about the recyclability of our products and our Environmental Guarantee, please visit [shawcontract.com/sustainability](#).

[Installation Guidelines](#)
[Maintenance Guidelines](#)

Please visit [www.shawcontract.com](#) for the most current warranty information.
Specifications are subject to nominal manufacturing variance. Material supply and/or manufacturing processes may necessitate changes without notice.

This product is an exclusive design and may not be duplicated in any manner. Use of this design in the creation of another product design is also strictly prohibited.

Visit [shawcontract.com/testing](#) for more information.

Available Colorways



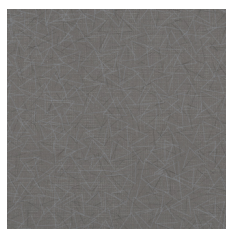
Snow Day 93100
V2 - Slight Variation



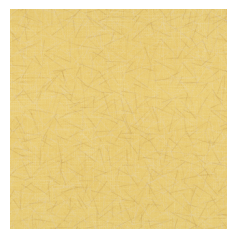
Beach 93160
V2 - Slight Variation



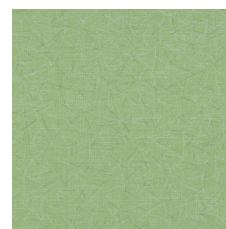
Playground 93250
V2 - Slight Variation



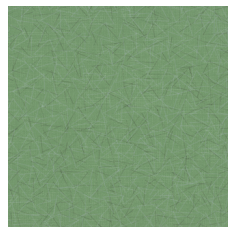
Song 93270
V2 - Slight Variation



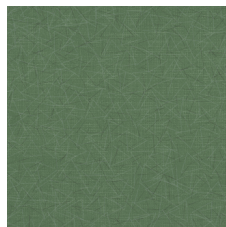
Sun 93290
V2 - Slight Variation



Bouquet 93310
V2 - Slight Variation



Park 93360
V2 - Slight Variation



Grass 93375
V2 - Slight Variation



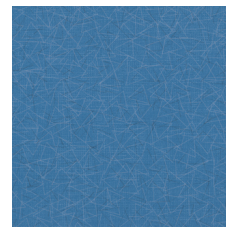
Treehouse 93385
V2 - Slight Variation



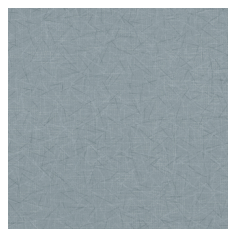
Spring 93390
V2 - Slight Variation



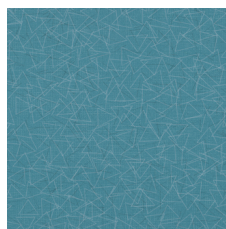
Sky 93405
V2 - Slight Variation



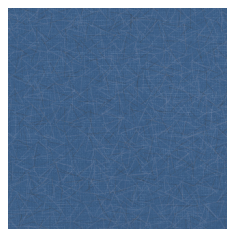
Pool 93410
V2 - Slight Variation



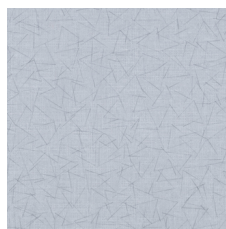
Bubble 93415
V2 - Slight Variation



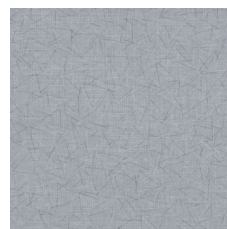
Summer 93470
V2 - Slight Variation



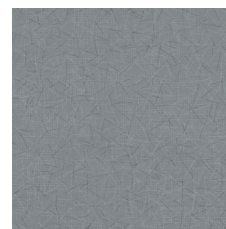
Snooze 93490
V2 - Slight Variation



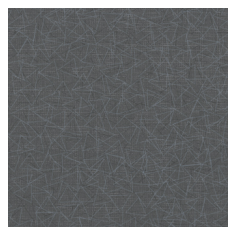
Holiday 93500
V2 - Slight Variation



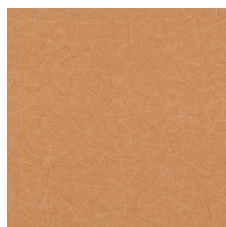
Tire Swing 93520
V2 - Slight Variation



Bicycle 93560
V2 - Slight Variation



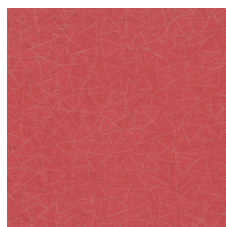
Firefly 93595
V2 - Slight Variation



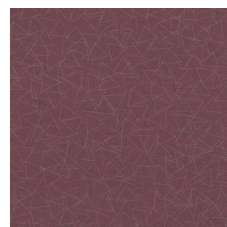
Firework 93680
V2 - Slight Variation



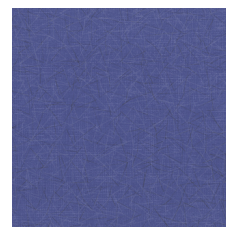
Backyard 93761
V2 - Slight Variation



Balloon 93890
V2 - Slight Variation



Carousel 93895
V2 - Slight Variation



Sprinkle 93995
V2 - Slight Variation

Color and Visual Variation Index

Shade and texture variation is inherent in all resilient products and can vary significantly from piece to piece. Samples should be used to assess color.

V1



Uniform Appearance

V2



Slight Variation

V3



Moderate Variation

V4



Substantial Variation

