

Joy Squared

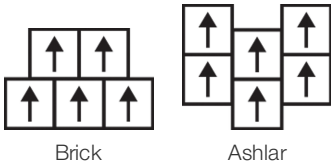
수집	Joy Squared	
스타일 번호	0993V	
구성	Heavy Commercial Luxury Vinyl Tile	
수업	Class III, Type B	
끝	ExoGuard+®	
	미국	미터법
공칭 치수	24 in w x 24 in l	61 cm w x 61 cm l
실제 치수	24.00 in w x 24.00 in l	60.96 cm w x 60.96 cm l
마모 층 두께	20 mil (0.02 in)	0.51 mm
전체 제품 두께	0.098 in	2.5 mm
가장자리 프로파일	사각형 모서리	
Installation Type	Dry Back	
설치	Direct Glue	
권장 접착제	S150-95 Resilient Tile Spray, , 4200 Resilient Tile 4 Gallon, 2200 Semi-Wet Resilient 4 Gallon Pail, 2200 Semi-Wet Resilient 1 Gallon Pail, or 4151 Multi-Use Premium 4 Gallon	

포장

상자 당 조각	17 pcs	
상자 당 면적	68 sq ft	6.32 sq m
상자 당 무게	57.79 lbs	26.21 kg



권장 설치 방법



공연 + 테스트

정적 하중 (ASTM F970)	Passes (Modified), *1500 lbs	*This test is intended to compare relative properties of different styles and constructions. Results are based on a laboratory test and used for comparative purposes - real life load limit may vary.	
내열성 (ASTM F1514)	Passes		
내광성 (ASTM F1515)	Passes		
화학 물질에 대한 내성 (ASTM F925)	Passes		
복사 패널 (ASTM E648)	Passes, Class I		
마찰 계수 (ASTM D2407, 미끄러짐 저항)	≥0.5, meets the recommended static coefficient of friction for ADA walking surfaces		
Test Reports may be included or listed by the manufacturing/inventory style number as opposed to the noted selling style number.			

보증

15년 상용 제한
Commercial 15 Year Underbed Bond Warranty.

Diversity & Inclusion

We believe all humans are equal. Individually and collectively, we need to proactively create and promote opportunities that give everybody an equal footing in life. We nurture an environment where every voice and perspective can be heard, and proactively promote accessibility and inclusivity inside our network and beyond. One proof point is our ability to meet the criteria of the Social Fairness pillar of the Cradle to Cradle Product Standard. At Shaw Industries, we promote supplier participation that is reflective of Shaw's diverse customer base and local community. More than 42% of our spend***** is with small and diverse businesses. We believe having a strong Supplier Diversity Program is strategic for bringing more innovation to our businesses and opening new markets for growth.

속성 + 인증

Health & Wellbeing

Material Ingredient Transparency
Indoor Air Quality

Health Product Declaration (HPD) | 1000 ppm Disclosure
FloorScore® | 인증

Climate Impact

Environmental Product Declaration (EPD)
Total Recycled Content

ISO 14025, EN 15804 및 ISO 21930:2017에 따라 타사 인증 획득
30% (Pre-Consumer 30% | Post-Consumer 0%)

Global Product Assessment

Environmental Guarantee* | Through Our Environmental Guarantee, Shaw Pledges to Transport And Recycle Any Shaw Manufactured Resilient Within The United States And Canada At No Cost to The Customer.

CE Marking (EN 14041) | 타사 인증 획득
Country of Origin | United States

WELL V2 Contribution Credit

X01 Fundamental Material Precautions Part 1: (C): Restrict Asbestos Precondition
X08 Hazardous Material Reduction Part 1: Limit Hazardous Materials Optimization – 1 pt
X10 Volatile Compound Reduction Part 1 (A): Manage Volatile Organic Compounds (VOCs) Optimization – 1 pt
Part 2: Manage Semi-Volatile Organic Compounds (SVOCs) Optimization – 1 pt
X11 Long Term Emissions Control Part 2: Flooring Optimization – 1 pt

Absence of Asbestos
Absence of Heavy Metals
Absence of Halogenated Flame Retardants

Ortho-Phthalates
FloorScore Certificate

녹색의 공헌 기여 크레딧

MR 크레딧 : 제품 공개 및 최적화 구축
재료 성분-옵션 1 : 재료 성분보고
MR 크레딧 : 제품 공개 및 최적화 구축
환경 제품 선언-옵션 1 : 환경 제품 선언 (EPD)
EQ 크레딧 : 저 발광 재료
옵션 1 : 제품 범주 계산

Health Product Declaration (HPD) | 100 Ppm Disclosure

3rd Party Certified in Accordance with ISO 14025, EN 15804, & ISO 21930:2017
FloorScore® Certified

추가 정보

* To learn more about the recyclability of our products and our Environmental Guarantee, please visit shawcontract.com/sustainability.

[Installation Guidelines](#)

[Maintenance Guidelines](#)

Please visit www.shawcontract.com for the most current warranty information.
Specifications are subject to nominal manufacturing variance. Material supply and/or manufacturing processes may necessitate changes without notice.

This product is an exclusive design and may not be duplicated in any manner. Use of this design in the creation of another product design is also strictly prohibited.

Visit shawcontract.com/testing for more information.

Available Colorways



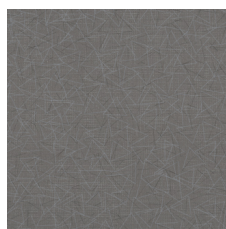
Snow Day 93100
V2 - Slight Variation



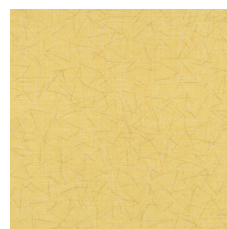
Beach 93160
V2 - Slight Variation



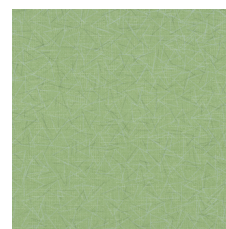
Playground 93250
V2 - Slight Variation



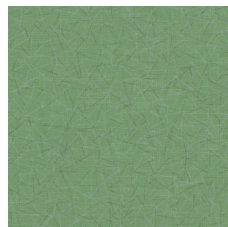
Song 93270
V2 - Slight Variation



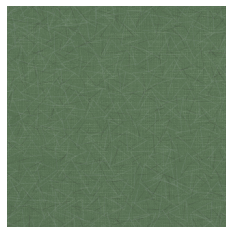
Sun 93290
V2 - Slight Variation



Bouquet 93310
V2 - Slight Variation



Park 93360
V2 - Slight Variation



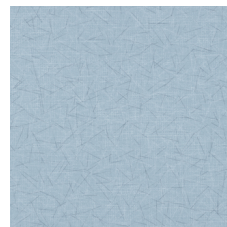
Grass 93375
V2 - Slight Variation



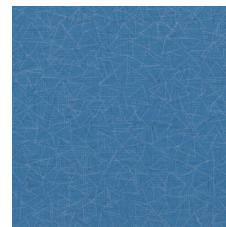
Treehouse 93385
V2 - Slight Variation



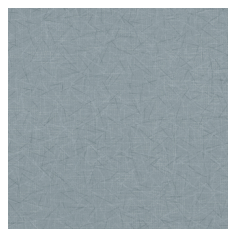
Spring 93390
V2 - Slight Variation



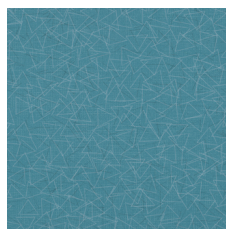
Sky 93405
V2 - Slight Variation



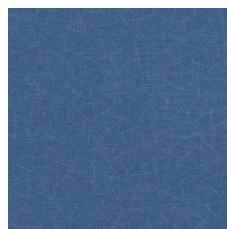
Pool 93410
V2 - Slight Variation



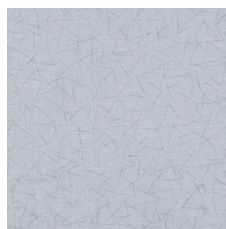
Bubble 93415
V2 - Slight Variation



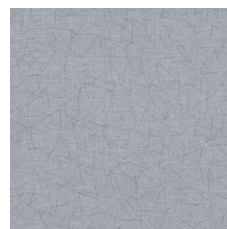
Summer 93470
V2 - Slight Variation



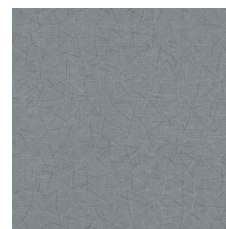
Snooze 93490
V2 - Slight Variation



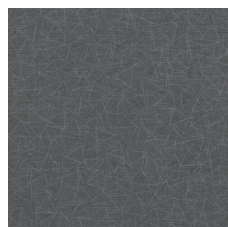
Holiday 93500
V2 - Slight Variation



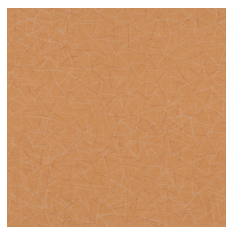
Tire Swing 93520
V2 - Slight Variation



Bicycle 93560
V2 - Slight Variation



Firefly 93595
V2 - Slight Variation



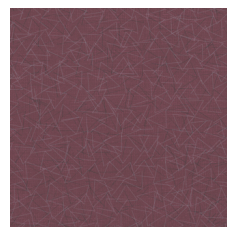
Firework 93680
V2 - Slight Variation



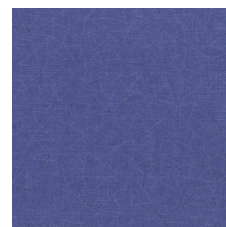
Backyard 93761
V2 - Slight Variation



Balloon 93890
V2 - Slight Variation



Carousel 93895
V2 - Slight Variation



Sprinkle 93995
V2 - Slight Variation

Color and Visual Variation Index

Shade and texture variation is inherent in all resilient products and can vary significantly from piece to piece. Samples should be used to assess color.

V1



Uniform Appearance

V2



Slight Variation

V3



Moderate Variation

V4



Substantial Variation

