

Innate

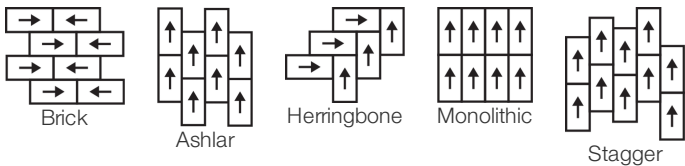
Collection	Innate + In Tandem	
Numéro De Style	0895V	
Construction	Carreaux De Tapis Hétérogène Commerciale EN Polyuréthane Biosourcé	
classe	ASTM F06 (In Development)	
Finition	ExoGuard+®	
	Impérial	Métrique
Dimensions Nominales	13 in w x 26 in l	33 cm w x 67 cm l
Dimensions Réelles	13.18 in w x 26.38 in l	33.48 cm w x 67.01 cm l
Épaisseur Générale Du Produit	0.098 in	2.5 mm
Profil Du Bord	Bord Carré	
Installation Type	Dry Back	
Installation	Direct Glue	
Adhésif Recommandé	4200 Resilient Tile 4 Gallon	

Emballage

Pièces Par Carton	16 pcs	
Surface Par Carton	38.64 sq ft	3.59 sq m
Poids Par Carton	28 lbs	12.7 kg



Méthodes d'Installation Conseillées



Coordination Des Produits

PVC-Free: In Tandem Sheet, In Tandem, Innate Sheet, Innate Linen Sheet, Innate Stria Tile

performance + Tests et essai

charge statique (ASTM F970)	Passes (Modified), *1500 lbs	*This test is intended to compare relative properties of different styles and constructions. Results are based on a laboratory test and used for comparative purposes - real life load limit may vary.
poinçonnement rémanent (ASTM F1914)	Passes	
résistance à la chaleur (ASTM F1514)	Passes	
résistance à la lumière (ASTM F1515)	Passes	
résistance chimique (ASTM F925)	Passes	
Essai au panneau radiant (Astm E648)	Passes, Class I	
coefficient de frottement (ASTM D2407, résistance au glissement)	≥0.5, meets the recommended static coefficient of friction for ADA walking surfaces	

Test Reports may be included or listed by the manufacturing/inventory style number as opposed to the noted selling style number.

Garanties

[Limitée Commerciale De 15 Ans](#)
[Commercial 15 Year Underbed Bond Warranty](#)

Diversity & Inclusion

We promote supplier participation that is reflective of Shaw Industries' diverse customer base and local community. We believe having a strong Supplier Diversity Program is strategic for bringing more innovation to our businesses and opening new markets for growth.

Attributs + Certifications

Health & Wellbeing	
Material Ingredient Transparency	Greenhealth Approved Yes Cradle to Cradle Certified™ Niveau Argent (Version 3.1) Health Product Declaration (HPD) 1000 ppm Disclosure Declare Conforme LBC
Indoor Air Quality	FloorScore® Agréé Greenguard Gold Agréé
Climate Impact	
Environmental Product Declaration (EPD)	Certifié Par Une Tierce Partie Conformément Aux Normes EN 15804, ISO 14025
Embodied Carbon (Cradle to Gate)	2.76 Kg CO ₂ /M ²
Life-Cycle Carbon Emissions	Carbon Neutral
Total Recycled Content	0% (Pre-Consumer 0% Post-Consumer 0%)
Global Product Assessment	
	CE Marking (EN 14041) Certifié Par Un Tiers Country of Origin Imported

WELL V2 Contribution Credit

X01 Fundamental Material Precautions Part 1: (C): Restrict Asbestos Precondition	C2C Silver Level (Version 3.1)
X08 Réduction des matières dangereuses Partie 1 : Optimisation des limites des matières dangereuses – 1 pt	C2C Silver Level (Version 3.1)
X10 Réduction des composés volatils Partie 1 (A) : Gérer l'optimisation des composés organiques volatils (COV) - 1 pt	C2C Silver Level (Version 3.1)
Partie 2 : Gérer l'optimisation des composés organiques semi-volatils (COSV) - 1 pt	C2C Silver Level (Version 3.1)
X11 Contrôle des émissions à long terme Partie 2 : Optimisation des revêtements de sol – 1 pt	FloorScore® & Greenguard Gold Certificate
X13 Enhanced Material Precaution Part 1: Select Optimized Materials Optimization - max 2 pts	C2C Silver Level (Version 3.1)
X14 Transparence des matériaux Partie 1 : Promouvoir l'optimisation de la divulgation des ingrédients - max 2 pts	C2C Silver Level (Version 3.1)

Contribution Au Certificat Vert Leed

- « Crédit MR : Divulcation et optimisation des produits de construction
- « Crédit MR : Divulcation et optimisation des produits de construction
- « Crédit MR : Divulcation et optimisation des produits de construction

MR Credit: Building Product Disclosure and Optimization
Sourcing of Raw Materials - Option 2: Leadership Extraction Practices

Crédit EQ : matériaux faibles émissions

**Health Product Declaration (HPD) | 100 Ppm Disclosure
C2C Silver Level (Version 3.1)**

3rd Party Certified in Accordance with EN 15804, ISO 14025

Bio-Based Materials - Meets Astm D6866 And ISO 16620-2

FloorScore & Greenguard Gold Certified

Informations Supplémentaires

**Meets or exceeds all local and national regulations in country of manufacture.

[Installation Guidelines](#)

[Maintenance Guidelines](#)

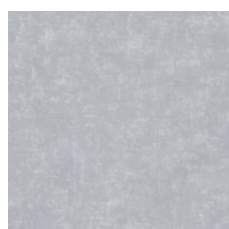
Please visit www.shawcontract.com for the most current warranty information.

Specifications are subject to nominal manufacturing variance. Material supply and/or manufacturing processes may necessitate changes without notice.

This product is an exclusive design and may not be duplicated in any manner. Use of this design in the creation of another product design is also strictly prohibited.

Visit shawcontract.com/testing for more information.

Available Colorways



Dove 95104

V1 - Uniform Appearance



Natural 95110

V1 - Uniform Appearance



Flax 95114

V1 - Uniform Appearance



Field 95330

V1 - Uniform Appearance



Mist 95405

V1 - Uniform Appearance



Shade 95410

V1 - Uniform Appearance



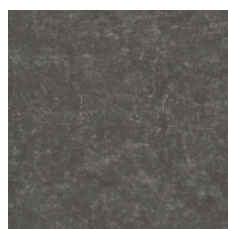
Concrete 95515

V1 - Uniform Appearance



Core 95595

V1 - Uniform Appearance



Umber 95715

V1 - Uniform Appearance



Mineral 95760

V1 - Uniform Appearance

Color and Visual Variation Index

Shade and texture variation is inherent in all resilient products and can vary significantly from piece to piece. Samples should be used to assess color.

V1



Uniform Appearance

V2



Slight Variation

V3



Moderate Variation

V4



Substantial Variation



Declare.



PVC-Free



Corporate Headquarters +1 800 257 7429 | +1 706 532 7984 | Atlanta +1 404 853 7429 | Bengaluru +91 80 6773 0202 | Beijing +86 10 6568 588 | Chicago +1 312 467 1331 | Dubai +971 4 584 6956 | Hong Kong +852 2623 0371 | London +44 207 961 4120 | Los Angeles +1 800 233 1614 | Melbourne +61 3 9939 8543 | Mexico City +55 5010 7600 | Mumbai +91 22 6284 5050 | Nantong +86 400 800 7429 | New York +1 212 953 7429 | Paris +33 (0) 1 81 22 44 39 | San Francisco +1 415 955 1920 | Shanghai +86 21 3338 4000 | Singapore +65 6733 1811 | Sydney +61 800 556 302

© 2025 Shaw Industries Group, Inc., a Berkshire Hathaway Company
July 29, 2025

3 of 3