

Inspire

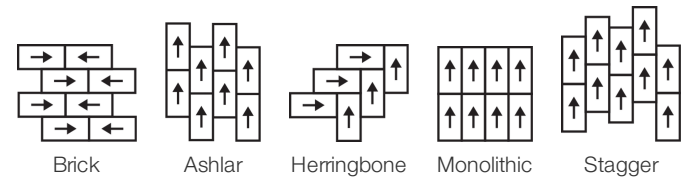
Collection	Mindful Play	
Style Number	0884V	
Construction	Heavy Commercial Luxury Vinyl Tile	
Class / ASTM F1700	Class III, Type B	
Finish	ExoGuard+®	
	U.s.	Metric
Nominal Dimensions	12 in w x 24 in l	30 cm w x 61 cm l
Actual Dimensions	12.00 in w x 24.00 in l	30.48 cm w x 60.96 cm l
Wear Layer Thickness	20 mil (0.02 in)	0.51 mm
Overall Thickness	0.098 in	2.5 mm
Edge Profile	Squared Edge	
Installation Type	Dry Back	
Installation	Direct Glue	
Recommended Adhesive	S150-95 Resilient Tile Spray, , 4200 Resilient Tile 4 Gallon, 2200 Semi-Wet Resilient 4 Gallon Pail, 2200 Semi-Wet Resilient 1 Gallon Pail, or 4151 Multi-Use Premium 4 Gallon	

Packaging

Pieces Per Carton	18 pcs	
Area Per Carton	36 sq ft	3.34 sq m
Weight Per Carton	32.4 lbs	14.7 kg



Recommended Installation Method



Coordinating Products

LVT: Inspire 5.0 Mm
Carpet Tile: Think Tile, Engage Tile, Impact Tile

Performance + Testing

Residual Indentation (ASTM F1914)	Passes
Resistance to Heat (ASTM F1514)	Passes
Resistance to Light (ASTM F1515)	Passes
Resistance to Chemicals (ASTM F925)	Passes
Radiant Panel (ASTM E648)	Passes, Class I
coefficient of friction (ASTM D2407, slip resistance)	≥0.5, meets the recommended static coefficient of friction for ADA walking surfaces

Test Reports may be included or listed by the manufacturing/inventory style number as opposed to the noted selling style number.

Warranties

[Commercial 15 Year Underbed Bond Warranty](#)
[15 Year Commercial Limited](#)

Diversity & Inclusion

We promote supplier participation that is reflective of Shaw Industries' diverse customer base and local community. We believe having a strong Supplier Diversity Program is strategic for bringing more innovation to our businesses and opening new markets for growth.

Material Health & Environmental Certifications

Health & Wellbeing

Material Ingredient Transparency
 Indoor Air Quality

Health Product Declaration (HPD) | 1000 ppm Disclosure
 FloorScore® | Certified

Climate Impact

Environmental Product Declaration (EPD)
 Total Recycled Content

3rd Party Certified in Accordance with ISO 14025, EN 15804, & ISO 21930:2017
 30% (Pre-Consumer 30% | Post-Consumer 0%)

Global Product Assessment

Re[tum] Reclamation Program* | Through Our Environmental Guarantee, Shaw Pledges to Transport And Recycle Any Shaw Manufactured Resilient Within The United States And Canada At No Cost to The Customer.
 CE Marking (EN 14041) | 3rd Party Certified
 Country of Origin | United States

WELL V2 Contribution Credit

X01 Fundamental Material Precautions Part 1: (C): Restrict Asbestos Precondition
 X08 Hazardous Material Reduction Part 1: Limit Hazardous Materials Optimization – 1 pt
 X10 Volatile Compound Reduction Part 1 (A): Manage Volatile Organic Compounds (VOCs) Optimization – 1 pt
 Part 2: Manage Semi-Volatile Organic Compounds (SVOCs) Optimization – 1 pt
 X11 Long Term Emissions Control Part 2: Flooring Optimization – 1 pt

Absence of Asbestos
Absence of Heavy Metals
Absence of Halogenated Flame Retardants

Ortho-Phthalates
FloorScore Certificate

Green Leed Contribution Credit

MR Credit: Building Product Disclosure and Optimization
 Material Ingredients - Option 1: Material Ingredient Reporting
 MR Credit: Building Product Disclosure and Optimization
 Environmental Product Declarations - Option 1: Environmental Product Declaration (EPD)
 EQ Credit: Low Emitting Materials
 Option 1: Product Category Calculations

Health Product Declaration (HPD) | 100 Ppm Disclosure

3rd Party Certified in Accordance with ISO 14025, EN 15804, & ISO 21930:2017
FloorScore® Certified

Additional Information

* To learn more about the recyclability of our products and our Environmental Guarantee, please visit shawcontract.com/sustainability.

Installation Guidelines

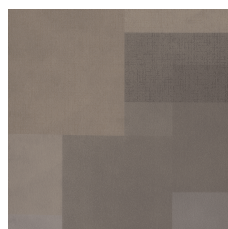
Maintenance Guidelines

Please visit www.shawcontract.com for the most current warranty information.
 Specifications are subject to nominal manufacturing variance. Material supply and/or manufacturing processes may necessitate changes without notice.

This product is an exclusive design and may not be duplicated in any manner. Use of this design in the creation of another product design is also strictly prohibited.

Visit shawcontract.com/testing for more information.

Available Colorways



Clarity 84111
LRV 25.2 | L* 57.27
V4 - Substantial Variation



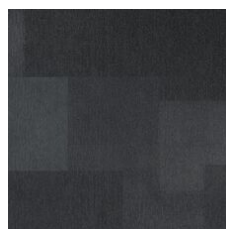
Lime 84325
LRV 34.9 | L* 65.68
V4 - Substantial Variation



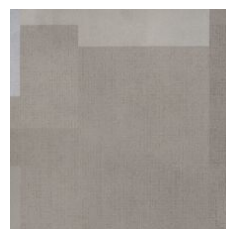
Teal 84405
LRV 9.1 | L* 36.14
V4 - Substantial Variation



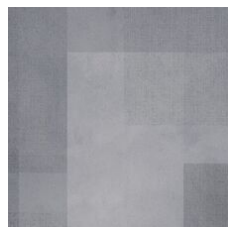
Blue 84429
LRV 8.1 | L* 34.22
V4 - Substantial Variation



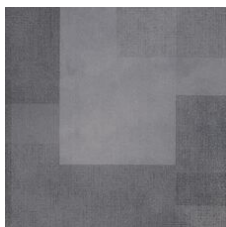
Escape 84505
LRV 6.9 | L* 31.63



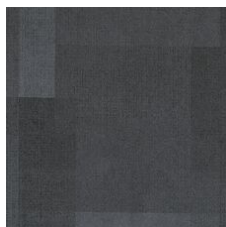
Nuance 84515
LRV 24.4 | L* 56.52
V4 - Substantial Variation



Encourage 84535
LRV 24.2 | L* 56.33
V4 - Substantial Variation



Transform 84585
LRV 13.6 | L* 43.68



Experience 84595
LRV 11 | L* 39.6



Orange 84668
LRV 14.3 | L* 44.65
V4 - Substantial Variation



Achieve 84760
LRV 9.9 | L* 37.71
V4 - Substantial Variation



Purple 84965
LRV 6.9 | L* 31.61
V4 - Substantial Variation

Color and Visual Variation Index

Shade and texture variation is inherent in all resilient products and can vary significantly from piece to piece. Samples should be used to assess color.

V1



Uniform Appearance

V2



Slight Variation

V3



Moderate Variation

V4



Substantial Variation

