

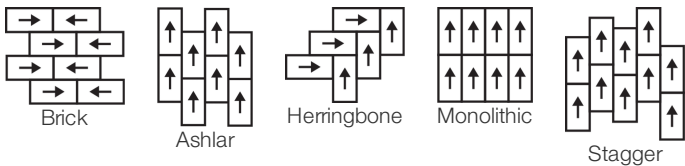
Inspire

Coleção	Mindful Play	
Número Do Produto	0884V	
Construção	Heavy Commercial Luxury Vinyl Tile	
classe	Class III, Type B	
Acabamento	ExoGuard+®	
	U.s.	Metric
Dimensões Nominais	12 in w x 24 in l	30 cm w x 61 cm l
Dimensões Reais	12.00 in w x 24.00 in l	30.48 cm w x 60.96 cm l
Espessura Da Camada De Uso	20 mil (0.02 in)	0.51 mm
Espessura Total Do Produto	0.098 in	2.5 mm
Perfil De Borda	Borda Quadrada	
Installation Type	Dry Back	
Instalação	Direct Glue	
Adesivo Recomendado	S150-95 Resilient Tile Spray, , 4200 Resilient Tile 4 Gallon, 2200 Semi-Wet Resilient 4 Gallon Pail, 2200 Semi-Wet Resilient 1 Gallon Pail, or 4151 Multi-Use Premium 4 Gallon	

Empacotamento

Peças Por Caixa	18 pcs	
Área Por Caixa	36 sq ft	3.34 sq m
Peso Por Caixa	32.4 lbs	14.7 kg

Método De Instalação Recomendado



Produtos Coordenados

LVT: Inspire 5.0 Mm  
Carpet Tile: Think Tile, Engage Tile, Impact Tile

desempenho + teste

recuo residual (ASTM F1914)	Passes
resistência ao calor (ASTM F1514)	Passes
resistência à luz (ASTM F1515)	Passes
resistência a produtos químicos (ASTM F925)	Passes
painel radiante (ASTM E648)	Passes, Class I
coeficiente de atrito (ASTM D2407, resistência ao deslizamento)	≥0.5, meets the recommended static coefficient of friction for ADA walking surfaces

Test Reports may be included or listed by the manufacturing/inventory style number as opposed to the noted selling style number.



## Garantias

[15 Anos Comercial Limitada](#)
[Commercial 15 Year Underbed Bond Warranty](#)

## Diversity &amp; Inclusion

We promote supplier participation that is reflective of Shaw Industries' diverse customer base and local community. We believe having a strong Supplier Diversity Program is strategic for bringing more innovation to our businesses and opening new markets for growth.

## Atributos + Certificações

## Health &amp; Wellbeing

Material Ingredient Transparency

Indoor Air Quality

Health Product Declaration (HPD) | 1000 ppm Disclosure

FloorScore® | Certificado

## Climate Impact

Environmental Product Declaration (EPD)

Embodied Carbon (Cradle to Gate)

Total Recycled Content

3rd Party Certified De Acordo Com ISO 14025, EN 15804, &amp; ISO 21930:2017

9.59 Kg CO<sub>2</sub>/M<sup>2</sup>

30% (Pre-Consumer 30% | Post-Consumer 0%)

## Global Product Assessment

Re[turn] Reclamation Program\* | Through Our Environmental Guarantee, Shaw Pledges to Transport And Recycle Any Shaw Manufactured Resilient Within The United States And Canada At No Cost to The Customer.

CE Marking (EN 14041) | Certificado 3rd Party

Country of Origin | United States

## WELL V2 Contribution Credit

X01 Fundamental Material Precautions Part 1: (C): Restrict Asbestos Precondition

X08 Hazardous Material Reduction Part 1: Limit Hazardous Materials Optimization – 1 pt

X10 Volatile Compound Reduction Part 1 (A): Manage Volatile Organic Compounds (VOCs) Optimization – 1 pt

Part 2: Manage Semi-Volatile Organic Compounds (SVOCs) Optimization – 1 pt

X11 Long Term Emissions Control Part 2: Flooring Optimization – 1 pt

**Absence of Asbestos****Absence of Heavy Metals****Absence of Halogenated Flame Retardants****Ortho-Phthalates****FloorScore Certificate**

## Crédito De Contribuição

MR Credit: Divulgação e otimização de produtos de construção  
Ingredientes materiais - Opção 1: Relatório de ingredientes materiaisMR Credit: Divulgação e otimização de produtos de construção  
Declarações ambientais do produto - Opção 1: Declaração ambiental do produto (EPD)Crédito de EQ: Materiais de baixa emissão  
Opção 1: cálculos de categoria de produto**Health Product Declaration (HPD) | 100 Ppm Disclosure****3rd Party Certified in Accordance with ISO 14025, EN 15804, & ISO 21930:2017****FloorScore® Certified**

## Informação Adicional

\* To learn more about the recyclability of our products and our Environmental Guarantee, please visit [shawcontract.com/sustainability](http://shawcontract.com/sustainability).

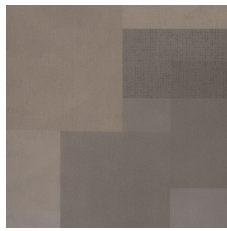
[Installation Guidelines](#)
[Maintenance Guidelines](#)

Please visit [www.shawcontract.com](http://www.shawcontract.com) for the most current warranty information. Specifications are subject to nominal manufacturing variance. Material supply and/or manufacturing processes may necessitate changes without notice.

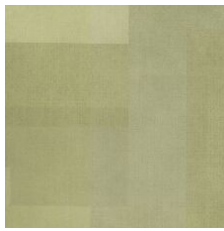
This product is an exclusive design and may not be duplicated in any manner. Use of this design in the creation of another product design is also strictly prohibited.

Visit [shawcontract.com/testing](http://shawcontract.com/testing) for more information.

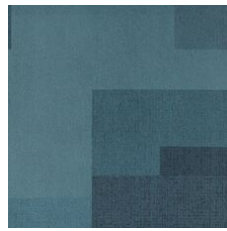
## Available Colorways



Clarity 84111  
LRV 25.2 | L\* 57.27  
V4 - Substantial Variation



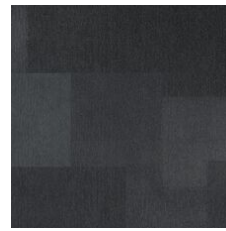
Lime 84325  
LRV 34.9 | L\* 65.68  
V4 - Substantial Variation



Teal 84405  
LRV 9.1 | L\* 36.14  
V4 - Substantial Variation



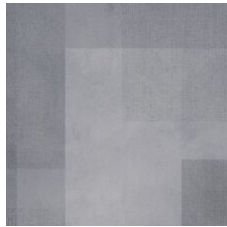
Blue 84429  
LRV 8.1 | L\* 34.22  
V4 - Substantial Variation



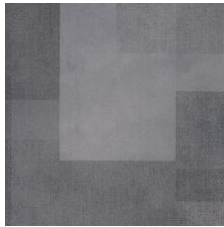
Escape 84505  
LRV 6.9 | L\* 31.63



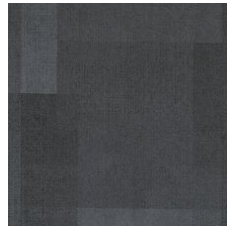
Nuance 84515  
LRV 24.4 | L\* 56.52  
V4 - Substantial Variation



Encourage 84535  
LRV 24.2 | L\* 56.33  
V4 - Substantial Variation



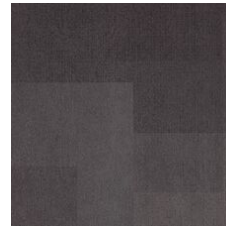
Transform 84585  
LRV 13.6 | L\* 43.68



Experience 84595  
LRV 11 | L\* 39.6



Orange 84668  
LRV 14.3 | L\* 44.65  
V4 - Substantial Variation



Achieve 84760  
LRV 9.9 | L\* 37.71  
V4 - Substantial Variation



Purple 84965  
LRV 6.9 | L\* 31.61  
V4 - Substantial Variation

### Color and Visual Variation Index

Shade and texture variation is inherent in all resilient products and can vary significantly from piece to piece. Samples should be used to assess color.

V1



Uniform Appearance

V2



Slight Variation

V3



Moderate Variation

V4



Substantial Variation

