

Inspire

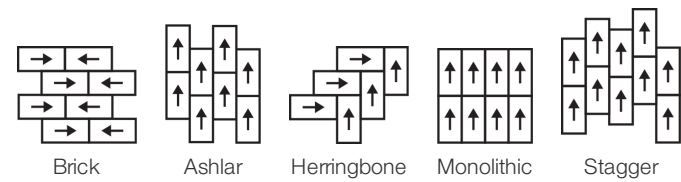
| | | |
|--------------------------------|-----------------------------------------------------------------------------------------------------------------------------|-------------------------|
| Collection | Mindful Play | |
| Numéro De Style | 0884V | |
| Construction | Carreau De Vinyle De Luxe Commercial Lourd | |
| classe | Class III, Type B | |
| Finition | ExoGuard+® | |
| | Impérial | Métrique |
| Dimensions Nominales | 12 in w x 24 in l | 30 cm w x 61 cm l |
| Dimensions Réelles | 12.00 in w x 24.00 in l | 30.48 cm w x 60.96 cm l |
| Épaisseur De La Couche d'Usure | 20 mil (0.02 in) | 0.51 mm |
| Épaisseur Générale Du Produit | 0.098 in | 2.5 mm |
| Profil Du Bord | Bord Carré | |
| Installation Type | Dry Back | |
| Installation | Direct Glue | |
| Adhésif Recommandé | S150-95 Resilient Tile Spray, 4200 Resilient Tile 4 Gallon, 2200 Resilient Tile 4 Gallon or 4151 Multi-Use Premium 4 Gallon | |

Emballage

| | | |
|--------------------|----------|-----------|
| Pièces Par Carton | 18 pcs | |
| Surface Par Carton | 36 sq ft | 3.34 sq m |
| Poids Par Carton | 32.4 lbs | 14.7 kg |



Méthodes d'Installation Conseillées



Coordination Des Produits

LVT: Inspire 5.0 Mm
Carpet Tile: Think Tile, Engage Tile, Impact Tile

Performance + Tests Et Essai

| | |
|------------------------------------------------------------------|-------------------------------------------------------------------------------------|
| Poinçonnement Rémanent (Astm F1914) | Passes |
| Résistance À La Chaleur (Astm F1514) | Passes |
| Résistance À La Lumière (Astm F1515) | Passes |
| Résistance Chimique (Astm F925) | Passes |
| Coefficient De Frottement (Astm D2407, Résistance Au Glissement) | ≥0.5, meets the recommended static coefficient of friction for ADA walking surfaces |

Test Reports may be included or listed by the manufacturing/inventory style number as opposed to the noted selling style number.

Garanties

[Limitée Commerciale De 15 Ans](#)

[Commercial 15 Year Underbed Bond Warranty](#)

Diversity, Equity & Inclusion

We believe all humans are equal. Individually and collectively, we need to proactively create and promote opportunities that give everybody an equal footing in life. We nurture an environment where every voice and perspective can be heard, and proactively promote accessibility and inclusivity inside our network and beyond. One proof point is our ability to meet the criteria of the Social Fairness pillar of the Cradle to Cradle Product Standard. At Shaw Industries, we promote supplier participation that is reflective of Shaw's diverse customer base and local community. More than 42% of our spend***** is with small and diverse businesses. We believe having a strong Supplier Diversity Program is strategic for bringing more innovation to our businesses and opening new markets for growth.

Attributs + Certifications

Health & Wellbeing

Material Ingredient Transparency

[Health Product Declaration \(HPD\) | 1000 ppm Disclosure](#)

Climate Impact

Environmental Product Declaration (EPD)

[Certifié Par Une Tierce Partie Conformément Aux Normes ISO 14025, EN 15804 Et ISO 21930:2017](#)

Total Recycled Content

30% (Pre-Consumer 30% | Post-Consumer 0%)

Global Product Assessment

[Re\[tum\] Reclamation Program* | Through Our Environmental Guarantee, Shaw Pledges to Transport And Recycle Any Shaw Manufactured Resilient Within The United States And Canada At No Cost to The Customer.](#)

[FloorScore® | Agréé](#)

CE Marking (EN 14041) | Certifié Par Un Tiers

Country of Origin | United States

Contribution Au Certificat Vert Leed

« Crédit MR : Divulcation et optimisation des produits de construction

« Crédit MR : Divulcation et optimisation des produits de construction

Crédit EQ : matériaux faibles émissions

Health Product Declaration (HPD) | 100 Ppm Disclosure

3rd Party Certified in Accordance with ISO 14025, EN 15804, & ISO 21930:2017

FloorScore Certified

Informations Supplémentaires

* To learn more about the recyclability of our products and our Environmental Guarantee, please visit shawcontract.com/sustainability.

[Installation Guidelines](#)

[Maintenance Guidelines](#)

Please visit www.shawcontract.com for the most current warranty information.

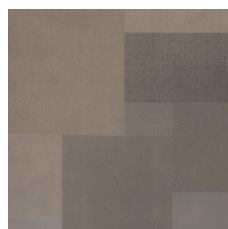
Specifications are subject to nominal manufacturing variance. Material supply and/or manufacturing processes may necessitate changes without notice.

This product is an exclusive design and may not be duplicated in any manner. Use of this design in the creation of another product design is also strictly prohibited.

*****Allowable spend is domestic (US) spend in categories in which we have diverse suppliers from which to choose. Compared to non-allowable spend which includes categories in which we do not have domestic, small or diverse suppliers available to meet our needs.

Visit shawcontract.com/testing for more information.

Available Colorways



Clarity 84111
LRV 25.2

V4 - Substantial Variation



Lime 84325
LRV 34.9

V4 - Substantial Variation



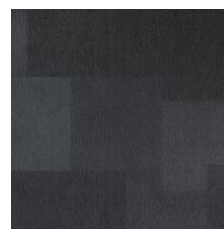
Teal 84405
LRV 9.1

V4 - Substantial Variation



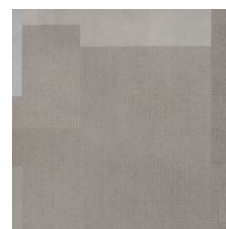
Blue 84429
LRV 8.1

V4 - Substantial Variation



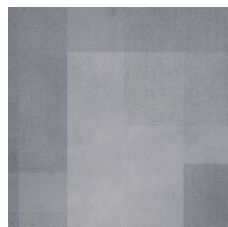
Escape 84505
LRV 6.9

V4 - Substantial Variation



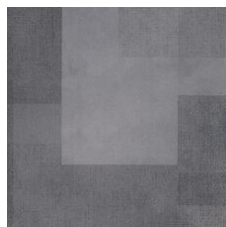
Nuance 84515
LRV 24.4

V4 - Substantial Variation



Encourage 84535
LRV 24.2

V4 - Substantial Variation



Transform 84585
LRV 13.6

V4 - Substantial Variation



Experience 84595
LRV 11

V4 - Substantial Variation



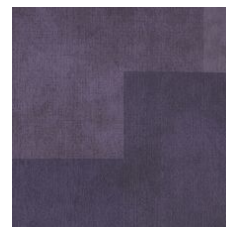
Orange 84668
LRV 14.3

V4 - Substantial Variation



Achieve 84760
LRV 9.9

V4 - Substantial Variation



Purple 84965
LRV 6.9

V4 - Substantial Variation

Color and Visual Variation Index

Shade and texture variation is inherent in all resilient products and can vary significantly from piece to piece. Samples should be used to assess color.

V1



Uniform Appearance

V2



Slight Variation

V3



Moderate Variation

V4



Substantial Variation

