

Inspire

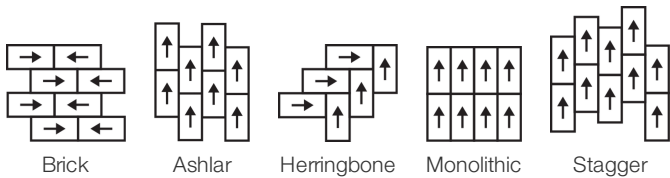
|                   |   |                         |
|-------------------|---|-------------------------|
| 수집                | Mindful Play  |                         |
| 스타일 번호            | 0884V   |                         |
| 구성                | Heavy Commercial Luxury Vinyl Tile  |                         |
| 수업                | Class III, Type B   |                         |
| 끝                 | ExoGuard+®  |                         |
|                   | 미국  | 미터법                     |
| 공칭 치수             | 12 in w x 24 in l   | 30 cm w x 61 cm l       |
| 실제 치수             | 12.00 in w x 24.00 in l   | 30.48 cm w x 60.96 cm l |
| 마모 층 두께           | 20 mil (0.02 in)  | 0.51 mm                 |
| 전체 제품 두께          | 0.098 in  | 2.5 mm                  |
| 가장자리 프로파일         | 사각형 모서리   |                         |
| Installation Type | Dry Back  |                         |
| 설치                | Direct Glue   |                         |
| 권장 접착제            | S150-95 Resilient Tile Spray, 4200 Resilient Tile 4 Gallon, 2200 Resilient Tile 4 Gallon or 4151 Multi-Use Premium 4 Gallon |                         |

포장

|         |          |           |
|---------|----------|-----------|
| 상자 당 조각 | 18 pcs   |           |
| 상자 당 면적 | 36 sq ft | 3.34 sq m |
| 상자 당 무게 | 32.4 lbs | 14.7 kg   |



권장 설치 방법



코디네이팅 제품

Carpet Tile: Think Tile, Engage Tile, Impact Tile

공연 + 테스트

- 잔차 들어 쓰기 (Astm F1914)
- 내열성 (Astm F1514)
- 내광성 (Astm F1515)
- 화학 물질에 대한 내성 (Astm F925)
- 마찰 계수 (astm D2407, 미끄러짐 저항)

Passes  
Passes  
Passes  
Passes  
≥0.5, meets the recommended static coefficient of friction for ADA walking surfaces

Test Reports may be included or listed by the manufacturing/inventory style number as opposed to the noted selling style number.

## 보증

[15년 상용 제한](#)[Commercial 15 Year Underbed Bond Warranty](#)

## Diversity, Equity &amp; Inclusion

We believe all humans are equal. Individually and collectively, we need to proactively create and promote opportunities that give everybody an equal footing in life. We nurture an environment where every voice and perspective can be heard, and proactively promote accessibility and inclusivity inside our network and beyond. One proof point is our ability to meet the criteria of the Social Fairness pillar of the Cradle to Cradle Product Standard. At Shaw Industries, we promote supplier participation that is reflective of Shaw's diverse customer base and local community. More than 42% of our spend\*\*\*\*\* is with small and diverse businesses. We believe having a strong Supplier Diversity Program is strategic for bringing more innovation to our businesses and opening new markets for growth.

## 속성 + 인증

## Health &amp; Wellbeing

Material Ingredient Transparency

[Health Product Declaration \(HPD\) | 1000 ppm Disclosure](#)

## Climate Impact

Environmental Product Declaration (EPD)

Total Recycled Content

[ISO 14025, EN 15804 및 ISO 21930:2017에 따라 타사 인증 획득](#)  
30% (Pre-Consumer 30% | Post-Consumer 0%)

## Global Product Assessment

[Re\[turn\] Reclamation Program\\* | Through Our Environmental Guarantee, Shaw Pledges to Transport And Recycle Any Shaw Manufactured Resilient Within The United States And Canada At No Cost to The Customer.](#)[FloorScore® | 인증](#)

CE Marking (EN 14041) | 타사 인증 획득

Country of Origin | United States

## 녹색의 공헌 기여 크레딧

MR 크레딧 : 제품 공개 및 최적화 구축  
재료 성분-옵션 1 : 재료 성분보고MR 크레딧 : 제품 공개 및 최적화 구축  
환경 제품 선언-옵션 1 : 환경 제품 선언 (EPD)EQ 크레딧 : 저 발광 재료  
옵션 1 : 제품 범주 계산**Health Product Declaration (HPD) | 100 Ppm Disclosure****3rd Party Certified in Accordance with ISO 14025, EN 15804, & ISO 21930:2017****FloorScore Certified**

## 추가 정보

\* To learn more about the recyclability of our products and our Environmental Guarantee, please visit [shawcontract.com/sustainability](http://shawcontract.com/sustainability).

[Installation Guidelines](#)[Maintenance Guidelines](#)Please visit [www.shawcontract.com](http://www.shawcontract.com) for the most current warranty information.

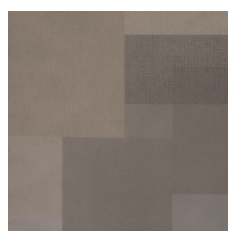
Specifications are subject to nominal manufacturing variance. Material supply and/or manufacturing processes may necessitate changes without notice.

This product is an exclusive design and may not be duplicated in any manner. Use of this design in the creation of another product design is also strictly prohibited.

\*\*\*\*\*Allowable spend is domestic (US) spend in categories in which we have diverse suppliers from which to choose. Compared to non-allowable spend which includes categories in which we do not have domestic, small or diverse suppliers available to meet our needs.

Visit [shawcontract.com/testing](http://shawcontract.com/testing) for more information.

## Available Colorways



Clarity 84111  
LRV 25.2

V4 - Substantial Variation



Lime 84325  
LRV 34.9

V4 - Substantial Variation



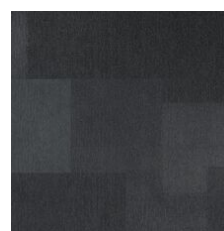
Teal 84405  
LRV 9.1

V4 - Substantial Variation



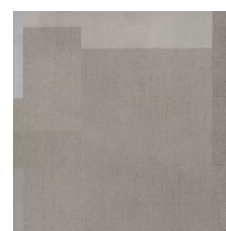
Blue 84429  
LRV 8.1

V4 - Substantial Variation



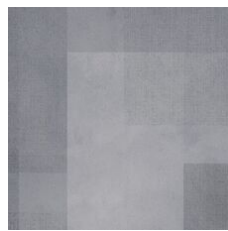
Escape 84505  
LRV 6.9

V4 - Substantial Variation



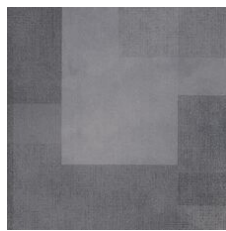
Nuance 84515  
LRV 24.4

V4 - Substantial Variation



Encourage 84535  
LRV 24.2

V4 - Substantial Variation



Transform 84585  
LRV 13.6

V4 - Substantial Variation



Experience 84595  
LRV 11

V4 - Substantial Variation



Orange 84668  
LRV 14.3

V4 - Substantial Variation



Achieve 84760  
LRV 9.9

V4 - Substantial Variation



Purple 84965  
LRV 6.9

V4 - Substantial Variation

### Color and Visual Variation Index

Shade and texture variation is inherent in all resilient products and can vary significantly from piece to piece. Samples should be used to assess color.

V1



Uniform Appearance

V2



Slight Variation

V3



Moderate Variation

V4



Substantial Variation

