

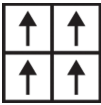
Peto II 20 Tile

Nom De Style	Carreaux De Tapis
Numéro De Style	59369
Construction	Boucle Texturée
Fibre	Ecosolution Q100™ Nylon
Méthode De Teinture	100% Teint EN Solution
Endos Primaire	Synthétique
Endos Secondaire	Ecworx® Tile
Traitements Protecteur	Protection Des Sols SSP® Shaw
Adhésif Recommandé	LokDots, 3000 Carpet Tile 1 Gallon, 4151 Multi-Use Carpet Tile 4 Gallon, 5000 Carpet Tile 1 Gallon, LokWorx Adhesive Tabs, 3800 Indoor Outdoor Carpet Tile 4 Gallon, 5000 Carpet Tile 4 Gallon or 3000 Carpet Tile 4 Gallon

	u.s.	metric
Dimensions Du Produit	24 in x 24 in	61 cm x 61 cm
Surface Par Carton	48 ft²	4.46 m²
Pièces Par Carton	12 pcs	
Jauge	1/10 in	39.4 per 10 cm
Compte De Mailles	8.5 per in	34.5 per 10 cm
Épaisseur Fini	0.093 in	2.36 mm
Densité	7742 oz/yd³	0.286 g/cm³
Kilotex		12.32
Poids De La Fibre Touffetée	0.230 in	5.84 mm
Poids De La Fibre Touffetée	20 oz/yd²	678.1 g/m²



Méthodes d'Installation Conseillées



Monolithic

Spécifications Du Rendement + Tests Et Essai

Essai Au Panneau Radiant (Astm E648)	Class I
Densité Du Fumée	Less Than 450
Statique	Less Than 3.5 kv
Label Cri Green Label Plus (Glpi)	GLP9968
Inflammabilité	Pass*
Ada Conformité	≥0.6, conforme au coefficient de frottement statique pour les surfaces de passage et d'accessibilité simplifiée (ADA).***

Test Reports may be included or listed by the manufacturing/inventory style number as opposed to the noted selling style number.

Garanties

Commerciale Limitée

Attributs + Certifications

Certifications Below Apply Exclusively To The Carpet Tile Rug Itself And Not The Lokworx Tabs Adhesive

Health & Wellbeing

Material Ingredient Transparency

Cradle to Cradle Certified® | Silver Level (Version 4.0)  
Health Product Declaration (HPD) | Divulcation De 1 000 ppm  
Living Building Challenge (LBC) | Exempt De Produits Chimiques De La Liste Rouge  
Declare | Conforme LBC  
NSF 140 | or  
CRI Green Label Plus (GLP) | GLP9968

Indoor Air Quality

Climate Impact

Environmental Product Declaration (EPD)

Certifié Par Une Tierce Partie Conformément Aux Normes ISO 14044, ISO 14025 Et EN 15804  
3.79 kg CO<sub>2</sub>/m<sup>2</sup>  
Low Embodied Carbon  
58% (Pre-Consumer 58% | Post-Consumer 0%)  
100% Recyclable

Embodied Carbon (Cradle to Gate)

Life-Cycle Carbon Emissions

Total Recycled Content

Product Packaging

Global Product Assessment

Singapore Green Label | Agréé  
CE Marking (EN 14041) | Certifié Par Un Tiers  
Environmental Guarantee\* | Re[turn] Reclamation Program\* | Through Our Environmental Guarantee, Shaw Pledges to Transport And Recycle Any Ecoworx Carpet.  
Country of Origin\*\* | Imported

Well V2 Contribution Credit

- X08 Réduction des matières dangereuses Partie 1 : Optimisation des limites des matières dangereuses – 1 pt
- X10 Réduction des composés volatils Partie 1 (A) : Gérer l'optimisation des composés organiques volatils (COV) - 1 pt
- X11 Contrôle des émissions à long terme Partie 2 : Optimisation des revêtements de sol – 1 pt
- X13 Enhanced Material Precaution Part 1: Select Optimized Materials Optimization - max 2 pts
- X14 Transparence des matériaux Partie 1 : Promouvoir l'optimisation de la divulgation des ingrédients - max 2 pts

C2C Silver Level (Version 4.0)  
C2C Silver Level (Version 4.0)  
Green Label Plus Certification: GLP9968  
C2C Silver Level (Version 4.0)  
C2C Silver Level (Version 4.0)

Contribution Au Certificat Vert Leed

- « Crédit MR : Divulcation et optimisation des produits de construction
- « Crédit MR : Divulcation et optimisation des produits de construction
- « Crédit MR : Divulcation et optimisation des produits de construction
- « Crédit MR : Divulcation et optimisation des produits de construction

3rd Party Certified in Accordance with ISO14044, ISO14025 & EN15804  
C2C Silver Level (Version 4.0) or HPD (Version 2.1)  
C2C Silver Level (Version 4.0)  
Environmental Guarantee: Re[turn] Reclamation Program\* | Through Our Environmental Guarantee, Shaw Pledges to Transport And Recycle Any Ecoworx® Carpet.  
Green Label Plus Certification: GLP9968  
Ecoworx® Tile with Lokdots Installation System

Crédit EQ : matériaux faibles émissions

MR Credit: Interiors Life-Cycle Impact Reduction  
Option 3: Design for Flexibility



Available Colorways

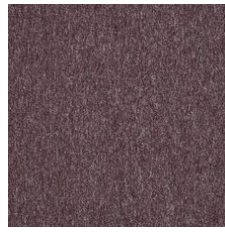
					
Coconut 71111	Beechwood 71150	Bronze 71205	Jade Pebbles 71300	Spa Day 71306	Indian Chai Tea 71309
					
Coastal Getaway 71321	Oak Alley 71330	Geckio 71335	Water Lily 71345	Sun And Moon 71350	Reflecting Pool 71351
					
Mastermind 71355	Sing Blue Silver 71402	Nautical 71435	Bon Voyage 71440	Manhattan Blues 71445	Bird Bath 71450
					
Bluegrass Jazz 71455	Poolside 71460	Wisdom 71465	Blu Crush 71481	Moonstruck 71505	Top Brass 71520
					
Slate 71525	Going For Green 71545	Pure Titanium 71595	School Girl 71615	Courtyard 71700	Coffee Break 71761



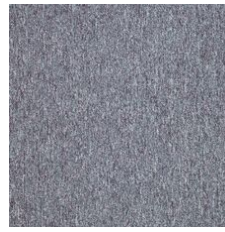
Bumbleberry 71820



Tango 71825



Rose Trellis 71830



Icy Azur 71900



Mature 71915



Pert 71920



Plum Martini 71965

## Informations Supplémentaires

\* To learn more about the recyclability of our products and our re[TURN], please visit [shawcontract.com/sustainability](https://shawcontract.com/sustainability).

\*\*Meets or exceeds all local and national regulations in country of manufacture.

\*\*\*This carpet is manufactured to be ADA compliant, but to be fully ADA compliant, the end-user must ensure the carpet is adhered to the floor and installed as outlined in the ADA standards.

[Installation Guidelines](#)

[Maintenance Guidelines](#)

Specifications are subject to nominal manufacturing variance. Material supply and/or manufacturing processes may necessitate changes without notice.

This product is an exclusive design and may not be duplicated in any manner. Use of this design in the creation of another product design is also strictly prohibited.

Visit [shawcontract.com/testing](https://shawcontract.com/testing) for more information.



**PVC-Free**

Corporate Headquarters +1 800 257 7429 | +1 706 532 7984 | Atlanta +1 404 853 7429 | Bengaluru +91 80 6773 0202 | Beijing +86 10 6568 588 | Chicago +1 312 467 1331 | Dubai +971 4 584 6956 | Hong Kong +852 2623 0371 | Latin America (Miami) +1 305 827 5912 | London +44 207 961 4120 | Los Angeles +1 800 233 1614 | Melbourne +61 3 9939 8543 | Mexico City +55 5010 7600 | Mumbai +91 22 6284 5050 | Nantong +86 400 800 7429 | New York +1 212 953 7429 | Paris +33 (0) 1 81 22 44 39 | San Francisco +1 415 955 1920 | Santiago +562 2431 5000 x 550 | São Paulo +55 11 3071 1702 | Shanghai +86 21 3338 4000 | Singapore +65 6733 1811 | Sydney +61 800 556 302