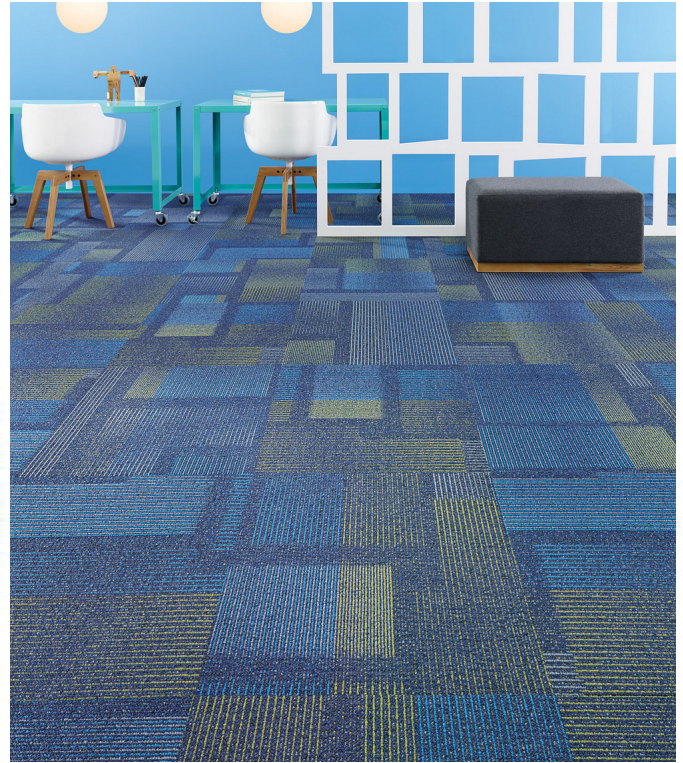


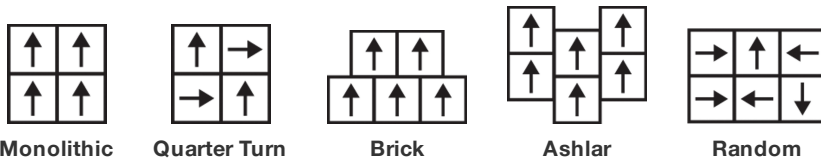
Construct Tile

상품 유형	Carpet Tile
수집	Cut + Compose
스타일 번호	5T104
구성	다중 레벨 루프식
섬유	Solution Q Extreme® 나일론
염료 방법	100% 원착 염색
기본 백업	합성
보조 백업	Ecoworx® 타일
보호 처리	오염 방지 기능
권장 접착제	LokDots, 3000 Carpet Tile 4 Gallon, 3000 Carpet Tile 1 Gallon, 4151 Multi-Use Carpet Tile 4 Gallon, 5000 Carpet Tile 1 Gallon, LokWorx Adhesive Tabs, 3800 Indoor Outdoor Carpet Tile 4 Gallon or 5000 Carpet Tile 4 Gallon



	u.s.	metric
제품 크기	24 in x 24 in	61 cm x 61 cm
상자 당 면적	48 ft ²	4.46 m ²
상자 당 조각	12 pcs	
계량기	1/12 in	47.2 per 10 cm
스티치	9.5 per in	38.0 per 10 cm
완성 된 말뚝 두께	0.091 in	2.31 mm
평균 밀도	7121 oz/yd ³	0.263 g/cm ³
킬로 텍스		9.71
총 두께	0.225 in	5.72 mm
슬을다는 무게	18 oz/yd ²	610.3 g/m ²

권장 설치 방법



데이터 + 테스트

복사 패널 (Astm E648)	Class I
Nbs 연기	Less Than 450
정전기 성향	Less Than 3.5 kv
Cri 그린 라벨 플러스 (Glp)	GLP9968
알약 테스트	Pass*
Ada 준수	0.6 이상, ADA 보행 노면과 이용 가능한 경로의 권장 마찰계수 충족***

Test Reports may be included or listed by the manufacturing/inventory style number as opposed to the noted selling style number.

보증

종신 상용 제한

코디네이팅 제품

Carpet Tile: **Copy Tile, Rotate Tile**

속성 + 인증

Certifications Below Apply Exclusively To The Carpet Tile Rug Itself And Not The Lokworx Tabs Adhesive

Health & Wellbeing

Material Ingredient Transparency

Cradle to Cradle Certified® | Silver 레벨(버전 3.1)
Health Product Declaration (HPD) | 1,000ppm 노출
Living Building Challenge (LBC) | 적색목록 화학물질 없음
Declare | LBC 규격
NSF 140 | 골드
CRI Green Label Plus (GLP) | GLP9968

Indoor Air Quality

Climate Impact

Environmental Product Declaration (EPD)

Embodied Carbon (Cradle to Gate)

Total Recycled Content

Product Packaging

ISO 14044, ISO 14025 및 EN15804에 따라 타사 인증 획득
8.5 kg CO₂/m²
36% (Pre-Consumer 36% | Post-Consumer 0%)
100% 재활용 가능

Global Product Assessment

Singapore Green Label | 인증**CE Marking (EN 14041) | 타사 인증 획득**

Environmental Guarantee* | Re[turn] Reclamation Program* | Through Our Environmental Guarantee, Shaw Pledges to Transport And Recycle Any Ecoworx Carpet.

Country of Origin | Imported**

Well V2 Contribution Credit

X08 Hazardous Material Reduction Part 1: Limit Hazardous Materials Optimization – 1 pt

C2C 실버 레벨 (버전 3.1)

X10 Volatile Compound Reduction Part 1 (A): Manage Volatile Organic Compounds (VOCs) Optimization – 1 pt

C2C 실버 레벨 (버전 3.1)

X11 Long Term Emissions Control Part 2: Flooring Optimization – 1 pt

Green Label Plus Certification: GLP9968

X13 Enhanced Material Precaution Part 1: Select Optimized Materials Optimization – max 2 pts

C2C 실버 레벨 (버전 3.1)

X14 Material Transparency Part 1: Promote Ingredient Disclosure Optimization – max 2 pts

C2C 실버 레벨 (버전 3.1)

녹색의 공헌 기여 크레딧

MR 크레딧 : 제품 공개 및 최적화 구축
환경 제품 선언-옵션 1 : 환경 제품 선언 (EPD)**3rd Party Certified in Accordance with ISO14044, ISO14025 & EN15804**MR 크레딧 : 제품 공개 및 최적화 구축
재료 성분-옵션 1 : 재료 성분보고**HPD (Version 2.1) or C2C Silver Level (Version 3.1)**MR 크레딧 : 제품 공개 및 최적화 구축
재료 성분-옵션 2 : 재료 성분 최적화**C2C 실버 레벨 (버전 3.1)**MR 크레딧 : 제품 공개 및 최적화 구축
원료 소싱-옵션 2 : 리더십 추출 사례

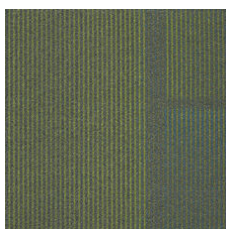
Environmental Guarantee: Re[turn] Reclamation Program* | Through Our Environmental Guarantee, Shaw Pledges to Transport And Recycle Any Ecoworx® Carpet.

Green Label Plus Certification: GLP9968EQ 크레딧 : 저 발광 재료
옵션 1 : 제품 범주 계산**Ecworx® Tile with Lokdots Installation System**MR Credit: Interiors Life-Cycle Impact Reduction
Option 3: Design for Flexibility

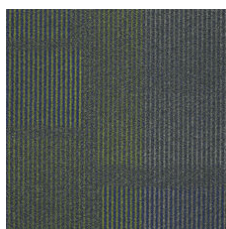
Available Colorways



Notation 03150



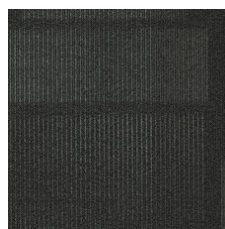
Format 03370



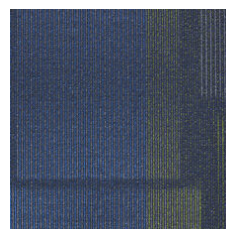
Abstract 03481



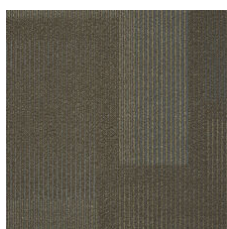
Ecliptic 03500



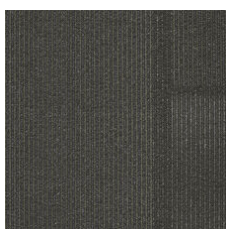
Typeset 03505



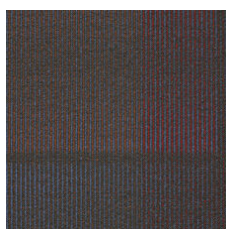
Sector 03585



Cut Up 03740



Integer 03751



Emblem 03753



Factor 03760



Characters 03761



Radius 03765

추가 정보

* To learn more about the recyclability of our products and our re[TURN], please visit shawcontract.com/sustainability.

**Meets or exceeds all local and national regulations in country of manufacture.

***This carpet is manufactured to be ADA compliant, but to be fully ADA compliant, the end-user must ensure the carpet is adhered to the floor and installed as outlined in the ADA standards.

[Installation Guidelines](#)

[Maintenance Guidelines](#)

Specifications are subject to nominal manufacturing variance. Material supply and/or manufacturing processes may necessitate changes without notice.

This product is an exclusive design and may not be duplicated in any manner. Use of this design in the creation of another product design is also strictly prohibited.

Visit shawcontract.com/testing for more information.



PVC-Free

Corporate Headquarters +1 800 257 7429 | +1 706 532 7984 | Atlanta +1 404 853 7429 | Bengaluru +91 80 6773 0202 | Beijing +86 10 6568 588 | Chicago +1 312 467 1331 | Dubai +971 4 584 6956 | Hong Kong +852 2623 0371 | London +44 207 961 4120 | Los Angeles +1 800 233 1614 | Melbourne +61 3 9939 8543 | Mexico City +55 5010 7600 | Mumbai +91 22 6284 5050 | Nantong +86 400 800 7429 | New York +1 212 953 7429 | Paris +33 (0) 1 81 22 44 39 | San Francisco +1 415 955 1920 | Shanghai +86 21 3338 4000 | Singapore +65 6733 1811 | Sydney +61 800 556 302

© 2025 Shaw Industries Group, Inc., a Berkshire Hathaway Company
July 1, 2025

3 of 3