

Uncover Tile

| | |
|-----------------------|---|
| Product Type | Carpet Tile |
| Collection | Vertical Layers |
| Style Number | 5T150 |
| Construction | Multi-Level Pattern/Cut Loop |
| Primary Backing | Synthetic |
| Secondary Backing | Ecworx® Tile |
| Protective Treatments | SSP® Shaw Soil Protection |
| Recommended Adhesive | 5000 Carpet Tile 4 Gallon, 3000 Carpet Tile 4 Gallon, 3000 Carpet Tile 1 Gallon, 4151 Multi-Use Carpet Tile 4 Gallon, 5000 Carpet Tile 1 Gallon, LokWorx Adhesive Tabs, 3800 Indoor Outdoor Carpet Tile 4 Gallon or LokDots |

| | | |
|-------------------------|--------------|----------------|
| | u.s. | metric |
| Product Size | 9 in x 36 in | 23 cm x 91 cm |
| Area Per Carton | 45 ft² | 4.18 m² |
| Pieces Per Carton | 20 pcs | |
| Gauge | 1/12 in | 47.2 per 10 cm |
| Stitches | 8.5 per in | 34.5 per 10 cm |
| Finished Pile Thickness | 0.129 in | 3.28 mm |
| Average Density | 6698 oz/yd³ | 0.248 g/cm³ |
| Kilotex | | 11.67 |
| Total Thickness | 0.293 in | 7.44 mm |
| Tufted Weight | 24 oz/yd² | 813.7 g/m² |



Recommended Installation Method

Ashlar

Brick

Herringbone

Monolithic

Data + Testing

| | |
|----------------------------|--|
| Radiant Panel | Class I |
| Nbs Smoke | Less Than 450 |
| Electrostatic Propensity | Less Than 3.5 kv |
| Cri Green Label Plus (Glp) | GLP5563 |
| Pill Test | Pass* |
| Ada Compliance | >0.6, Meets the recommended static coefficient of friction for ADA walking surfaces and accessible routes*** |

Test Reports may be included or listed by the manufacturing/inventory style number as opposed to the noted selling style number.

Warranties

Lifetime Commercial Limited

Coordinating Products

LVT: **Unveil**
Carpet Tile: **Expose Tile, Relief Tile, Tinge Tile, Undertone Tile**

Material Health & Environmental Certifications

Certifications Below Apply Exclusively To The Carpet Tile Rug Itself And Not The Lokworx Tabs Adhesive

Health & Wellbeing

| | |
|----------------------------------|---|
| Material Ingredient Transparency | Cradle to Cradle Certified® Silver Level (Version 4.0) Health Product Declaration (HPD) 1,000 ppm Disclosure Living Building Challenge (LBC) Free of Red List Chemicals Declare LBC Compliant NSF 140 Gold |
| Indoor Air Quality | CRI Green Label Plus (GLP) GLP5563 |

Climate Impact

| | |
|---|--|
| Environmental Product Declaration (EPD) | 3rd Party Certified in Accordance with ISO14044, ISO14025 & EN15804 |
| Embodied Carbon (Cradle to Gate) | 3.83 kg CO₂/m² |
| Life-Cycle Carbon Emissions | Carbon Neutral |
| Total Recycled Content | 59% (Pre-Consumer 59% Post-Consumer 0%) |
| Product Packaging | 100% Recyclable |

Global Product Assessment

Singapore Green Label | Certified
CE Marking (EN 14041) | 3rd Party Certified
Environmental Guarantee* | Re[turn] Reclamation Program* | Through Our Environmental Guarantee, Shaw Pledges to Transport And Recycle Any Ecoworx Carpet.
Country of Origin | USA**

Well V2 Contribution Credit

| | |
|--|--|
| X08 Hazardous Material Reduction Part 1: Limit Hazardous Materials Optimization – 1 pt | C2C Silver Level (Version 4.0) |
| X10 Volatile Compound Reduction Part 1 (A): Manage Volatile Organic Compounds (VOCs) Optimization – 1 pt | C2C Silver Level (Version 4.0) |
| X11 Long Term Emissions Control Part 2: Flooring Optimization – 1 pt | Green Label Plus Certification: GLP5563 |
| X13 Enhanced Material Precaution Part 1: Select Optimized Materials Optimization – max 2 pts | C2C Silver Level (Version 4.0) |
| X14 Material Transparency Part 1: Promote Ingredient Disclosure Optimization – max 2 pts | C2C Silver Level (Version 4.0) |

Green Leed Contribution Credit

MR Credit: Building Product Disclosure and Optimization
Environmental Product Declarations - Option 1: Environmental Product Declaration (EPD)

MR Credit: Building Product Disclosure and Optimization
Material Ingredients - Option 1: Material Ingredient Reporting

MR Credit: Building Product Disclosure and Optimization
Material Ingredients - Option 2: Material Ingredient Optimization

MR Credit: Building Product Disclosure and Optimization
Sourcing of Raw Materials - Option 2: Leadership Extraction Practices

EQ Credit: Low Emitting Materials
Option 1: Product Category Calculations

MR Credit: Interiors Life-Cycle Impact Reduction
Option 3: Design for Flexibility

3rd Party Certified in Accordance with ISO 14044, ISO 14025 & EN15804

HPD (Version 2.1) or C2C Silver Level (Version 4.0)

C2C Silver Level (Version 4.0)

Environmental Guarantee: Re[turn] Reclamation Program* | Through Our Environmental Guarantee, Shaw Pledges to Transport And Recycle Any Ecoworx® Carpet.

Green Label Plus Certification: GLP5563

Ecoworx® Tile with Lokdots Installation System

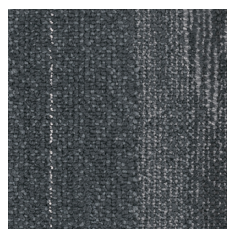
Available Colorways



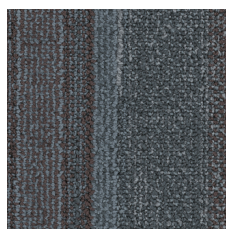
Birch 50111
LRV 19.1 | L* 50.81



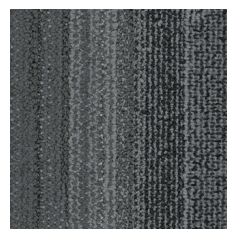
Weathered Birch 50112
LRV 19.8 | L* 51.64



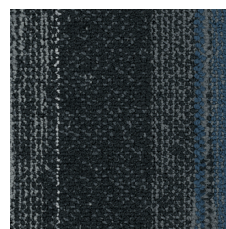
Concrete 50481
LRV 6.1 | L* 30.83



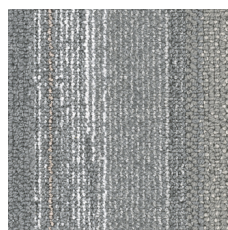
Industrial Conc 50482
LRV 7.7 | L* 33.25



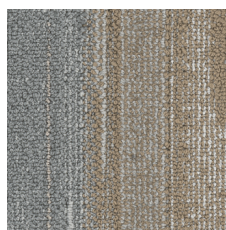
Iron 50505
LRV 2.9 | L* 19.53



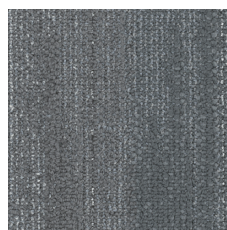
Oxidized Iron 50506
LRV 5.3 | L* 27.61



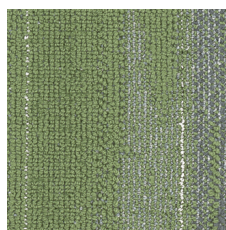
Pewter 50515
LRV 18.3 | L* 49.92



Burnished Pewte 50516
LRV 15.6 | L* 46.48



Steel 50535
LRV 17.2 | L* 48.79



Patina Steel 50536
LRV 14.5 | L* 44.9



Alum 50760
LRV 14.5 | L* 44.99



Tarnished Alum 50761
LRV 15.5 | L* 46.36

Additional Information

* To learn more about the recyclability of our products and our re[TURN], please visit shawcontract.com/sustainability.

**Meets or exceeds all local and national regulations in country of manufacture.

***This carpet is manufactured to be ADA compliant, but to be fully ADA compliant, the end-user must ensure the carpet is adhered to the floor and installed as outlined in the ADA standards.

[Installation Guidelines](#)

[Maintenance Guidelines](#)

Specifications are subject to nominal manufacturing variance. Material supply and/or manufacturing processes may necessitate changes without notice.

This product is an exclusive design and may not be duplicated in any manner. Use of this design in the creation of another product design is also strictly prohibited.

Visit shawcontract.com/testing for more information.

