

Tinge Tile

Product Type	Carpet Tile
Collection	Vertical Layers
Style Number	5T156
Construction	Multi-Level Pattern Loop
Fiber	Ecosolution Q100™ Nylon
Dye Method	100% Solution Dyed
Primary Backing	Synthetic
Secondary Backing	Ecoworx® Polyolefin Plastomer
Protective Treatments	SSP® Shaw Soil Protection
Recommended Adhesive	LokDots, 3000 Carpet Tile 1 Gallon, 4151 Multi-Use Carpet Tile 4 Gallon, 5000 Carpet Tile 1 Gallon, LokWorx Adhesive Tabs, 3800 Indoor Outdoor Carpet Tile 4 Gallon, 5000 Carpet Tile 4 Gallon or 3000 Carpet Tile 4 Gallon

	metric	u.s.
Product Size	23 cm x 91 cm	9 in x 36 in
Area per Carton	4.18 m²	45 ft²
Pieces per Carton	20 pcs	
Gauge	39.4 per 10 cm	1/10 in
Stitches	36.5 per 10 cm	9.0 per in
Finished Pile Thickness	2.34 mm	0.092 in
Average Density	0.246 g/cm³	6652 oz/yd³
Kilotex	8.53	
Total Thickness	6.17 mm	0.243 in
Tufted Weight	576.4 g/m²	17 oz/yd²



Recommended Installation Method

Ashlar

Brick

Herringbone

Monolithic

Performance + Testing

Radiant Panel	Class I
NBS Smoke	Less Than 450
Electrostatic Propensity	Less Than 3.5 kv
CRI Green Label Plus (GLP)	USA GLP9968   China GLP1263
Pill Test	Pass*
ADA Compliance	>0.6, Meets the recommended static coefficient of friction for ADA walking surfaces and accessible routes***

Test Reports may be included or listed by the manufacturing/inventory style number as opposed to the noted selling style number.

Warranties

Lifetime Commercial Limited

Coordinating Products

Carpet Tile: **Uncover Tile, Expose Tile, Relief Tile, Undertone Tile**

Material Health & Environmental Certifications

Certifications below apply exclusively to the carpet tile rug itself and not the LokWorx Tabs adhesive

Cradle to Cradle Certified®	<b>Silver Level (Version 4.0)</b>
Health Product Declaration (HPD)	<b>1,000 ppm Disclosure</b>
Environmental Product Declaration (EPD)	<b>3rd Party Certified in Accordance with ISO14044, ISO14025 &amp; EN15804</b>
Living Building Challenge (LBC)	<b>Free of Red List Chemicals</b>
Declare	<b>LBC Compliant <a href="#">USA</a>   <a href="#">China</a></b>
NSF 140	<b>Gold</b>
CRI Green Label Plus (GLP)	<b>USA <a href="#">GLP9968</a>   China <a href="#">GLP1263</a></b>
Singapore Green Label	<b>Certified</b>
CE Marking (EN 14041)	<b>3rd Party Certified</b>
Environmental Guarantee*	<b>Re[turn] Reclamation Program*   Through Our Environmental Guarantee, Shaw Pledges to Transport And Recycle Any Ecoworx Carpet.</b>
Total Recycled Content	<b>56% (Pre-Consumer 56%   Post-Consumer 0%)</b>
Product Packaging	<b>100% Recyclable</b>
Country of Origin**	<b>USA &amp; China</b>

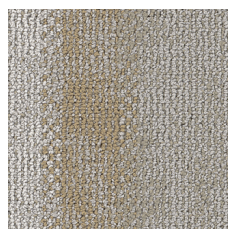
WELL V2 Contribution Credit

X08 Hazardous Material Reduction Part 1: Limit Hazardous Materials Optimization	<b>C2C Silver Level (Version 4.0)</b>
X10 Volatile Compound Reduction Part 1 (A): Manage Volatile Organic Compounds (VOCs) Optimization	<b>C2C Silver Level (Version 4.0)</b>
X11 Long Term Emissions Control Part 2: Flooring Optimization	<b>Green Label Plus Certification: <a href="#">GLP9968</a></b>
X13 Enhanced Material Precaution Part 1: Select Optimized Materials Optimization	<b>C2C Silver Level (Version 4.0)</b>
X14 Material Transparency Part 1: Promote Ingredient Disclosure Optimization	<b>C2C Silver Level (Version 4.0)</b>

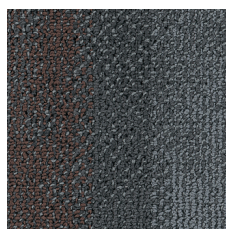
Leed v4 Contribution Credits

MR Credit: Building Product Disclosure and Optimization Environmental Product Declarations - Option 1: Environmental Product Declaration (EPD)	<b>3rd Party Certified in Accordance with ISO14044, ISO14025 &amp; EN15804</b>
MR Credit: Building Product Disclosure and Optimization Material Ingredients - Option 1: Material Ingredient Reporting	<b>C2C Silver Level (Version 4.0) or HPD (Version 2.1)</b>
MR Credit: Building Product Disclosure and Optimization Material Ingredients - Option 2: Material Ingredient Optimization	<b>C2C Silver Level (Version 4.0)</b>
MR Credit: Building Product Disclosure and Optimization Sourcing of Raw Materials - Option 2: Leadership Extraction Practices	<b>Environmental Guarantee: Re[turn] Reclamation Program*   Through Our Environmental Guarantee, Shaw Pledges to Transport And Recycle Any Ecoworx® Carpet.</b>
EQ Credit: Low Emitting Materials Option 1: Product Category Calculations	<b>Green Label Plus Certification: <a href="#">GLP9968</a></b>
MR Credit: Interiors Life-Cycle Impact Reduction Option 3: Design for Flexibility	<b>Ecoworx® Tile with Lokdots Installation System</b>

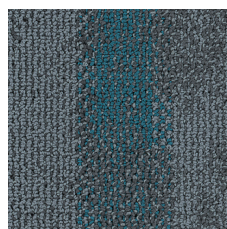
### Light Reflectance Value



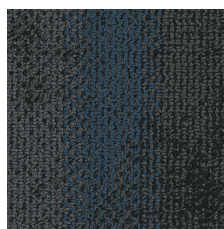
Weathered Birch 56112  
LRV 22.6 | L\* 54.69



Industrial Conc 56482  
LRV 6.3 | L\* 30.23



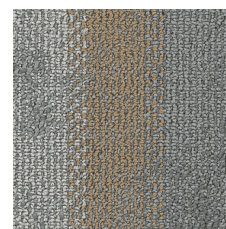
Ferric Metal 56483  
LRV 5.6 | L\* 28.29



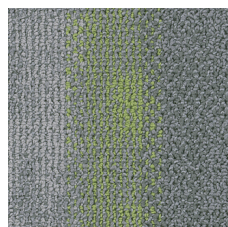
Oxidized Iron 56506  
LRV 3.8 | L\* 23.16



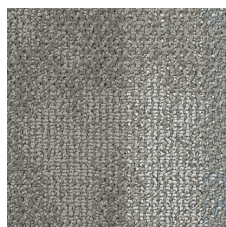
Blackened Iron 56508  
LRV 3.7 | L\* 22.52



Burnished Pewte 56516  
LRV 15.7 | L\* 46.54



Patina Steel 56536  
LRV 16.3 | L\* 47.41



Tarnished Alum 56761  
LRV 16.1 | L\* 47.14

### Additional Information

\* To learn more about the recyclability of our products and our re[TURN], please visit [shawcontract.com/sustainability](https://shawcontract.com/sustainability).

\*\*Meets or exceeds all local and national regulations in country of manufacture.

\*\*\*This carpet is manufactured to be ADA compliant, but to be fully ADA compliant, the end-user must ensure the carpet is adhered to the floor and installed as outlined in the ADA standards.

[Installation Guidelines](#)

[Maintenance Guidelines](#)

Specifications are subject to nominal manufacturing variance. Material supply and/or manufacturing processes may necessitate changes without notice.

This product is an exclusive design and may not be duplicated in any manner. Use of this design in the creation of another product design is also strictly prohibited.

Visit [shawcontract.com/testing](https://shawcontract.com/testing) for more information.



**PVC-Free**

Corporate Headquarters +1 800 257 7429 | +1 706 532 7984 | Atlanta +1 404 853 7429 | Bengaluru +91 80 6773 0202 | Beijing +86 10 6568 588 | Chicago +1 312 467 1331 | Dubai +971 4 584 6956 | Hong Kong +852 2623 0371 | Latin America (Miami) +1 305 827 5912 | London +44 207 961 4120 | Los Angeles +1 800 233 1614 | Melbourne +61 3 9939 8543 | Mexico City +55 5010 7600 | Mumbai +91 22 6284 5050 | Nantong +86 400 800 7429 | New York +1 212 953 7429 | Paris +33 (0) 1 81 22 44 39 | San Francisco +1 415 955 1920 | Santiago +562 2431 5000 x 550 | São Paulo +55 11 3071 1702 | Shanghai +86 21 3338 4000 | Singapore +65 6733 1811 | Sydney +61 800 556 302