

Tinge Tile

Nom De Style	Carreaux De Tapis
Collection	Vertical Layers
Numéro De Style	5T156
Construction	Boucle De Motif à Plusieurs Niveaux
Fibre	Ecosolution Q100™ Nylon
Méthode De Teinture	100% Teint EN Solution
Endos Primaire	Synthétique
Endos Secondaire	Ecworx® Tile
Traitements Protecteur	Protection Des Sols SSP® Shaw
Adhésif Recommandé	LokDots, 3000 Carpet Tile 4 Gallon, 3000 Carpet Tile 1 Gallon, 4151 Multi-Use Carpet Tile 4 Gallon, 5000 Carpet Tile 1 Gallon, LokWorx Adhesive Tabs, 3800 Indoor Outdoor Carpet Tile 4 Gallon or 5000 Carpet Tile 4 Gallon

	u.s.	metric
Dimensions Du Produit	9 in x 36 in	23 cm x 91 cm
Surface Par Carton	45 ft²	4.18 m²
Pièces Par Carton	20 pcs	
Jauge	1/10 in	39.4 per 10 cm
Compte De Mailles	9.0 per in	36.5 per 10 cm
Épaisseur Fini	0.092 in	2.34 mm
Densité	6652 oz/yd³	0.246 g/cm³
Kilotex		8.53
Poids De La Fibre Touffetée	0.243 in	6.17 mm
Poids De La Fibre Touffetée	17 oz/yd²	576.4 g/m²



Méthodes d'Installation Conseillées

Ashlar

Brick

Herringbone

Monolithic

Spécifications Du Rendement + Tests Et Essai

Essai Au Panneau Radiant (Astm E648)	Class I
Densité Du Fumée	Less Than 450
Statique	Less Than 3.5 kv
Label Cri Green Label Plus (Glp)	USA GLP9968   China GLP1263
Inflammabilité	Pass*
Ada Conformité	≥0.6, conforme au coefficient de frottement statique pour les surfaces de passage et d'accessibilité simplifiée (ADA).***

Test Reports may be included or listed by the manufacturing/inventory style number as opposed to the noted selling style number.

Garanties

Commerciale Limitée

Coordination Des Produits

LVT: **Unveil**  
Carpet Tile: **Uncover Tile, Expose Tile, Relief Tile, Undertone Tile**

Attributs + Certifications

Certifications Below Apply Exclusively To The Carpet Tile Rug Itself And Not The Lokworx Tabs Adhesive

Health & Wellbeing

Material Ingredient Transparency	<b>Cradle to Cradle Certified®   Silver Level (Version 4.0)</b> <b>Health Product Declaration (HPD)   Divulcation De 1 000 ppm</b> <b>Living Building Challenge (LBC)   Exempt De Produits Chimiques De La Liste Rouge</b> <b>Declare   Conforme LBC</b> <b>Declare   Conforme LBC</b> <b>NSF 140   or</b> <b>CRI Green Label Plus (GLP)   GLP9968</b>
Indoor Air Quality	

Climate Impact

Environmental Product Declaration (EPD)	<b>Certifié Par Une Tierce Partie Conformément Aux Normes ISO 14044, ISO 14025 Et EN 15804</b>
Embodied Carbon (Cradle to Gate)	<b>3.69 kg CO<sub>2</sub>/m<sup>2</sup></b>
Life-Cycle Carbon Emissions	<b>Low Embodied Carbon</b>
Total Recycled Content	<b>56% (Pre-Consumer 56%   Post-Consumer 0%)</b>
Product Packaging	<b>100% Recyclable</b>

Global Product Assessment

	<b>Singapore Green Label   Agréé</b> <b>CE Marking (EN 14041)   Certifié Par Un Tiers</b> <b>Environmental Guarantee*   Re[turn] Reclamation Program*   Through Our Environmental Guarantee, Shaw Pledges to Transport And Recycle Any Ecoworx Carpet.</b> <b>Country of Origin**   USA &amp; China</b>
--	--

Well V2 Contribution Credit

X08 Réduction des matières dangereuses Partie 1 : Optimisation des limites des matières dangereuses – 1 pt	<b>C2C Silver Level (Version 4.0)</b>
X10 Réduction des composés volatils Partie 1 (A) : Gérer l'optimisation des composés organiques volatils (COV) - 1 pt	<b>C2C Silver Level (Version 4.0)</b>
X11 Contrôle des émissions à long terme Partie 2 : Optimisation des revêtements de sol – 1 pt	<b>Green Label Plus Certification: GLP9968</b>
X13 Enhanced Material Precaution Part 1: Select Optimized Materials Optimization - max 2 pts	<b>C2C Silver Level (Version 4.0)</b>
X14 Transparence des matériaux Partie 1 : Promouvoir l'optimisation de la divulgation des ingrédients - max 2 pts	<b>C2C Silver Level (Version 4.0)</b>

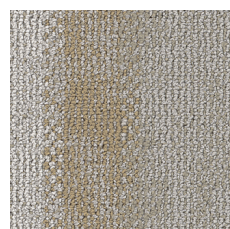
## Contribution Au Certificat Vert Leed

- « Crédit MR : Divulcation et optimisation des produits de construction
- « Crédit MR : Divulcation et optimisation des produits de construction
- « Crédit MR : Divulcation et optimisation des produits de construction
- « Crédit MR : Divulcation et optimisation des produits de construction

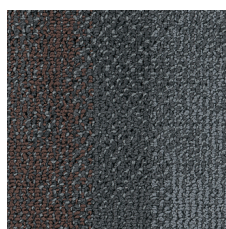
Crédit EQ : matériaux faibles émissions

MR Credit: Interiors Life-Cycle Impact Reduction  
Option 3: Design for Flexibility

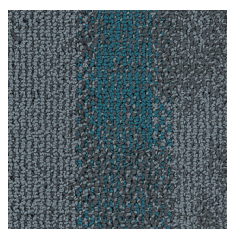
## Available Colorways



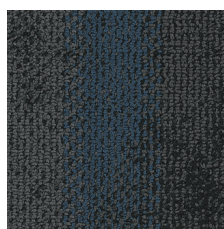
Weathered Birch 56112  
LRV 22.6 | L\* 54.69



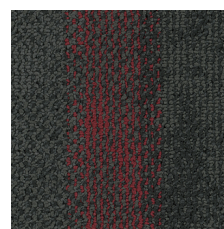
Industrial Conc 56482  
LRV 6.3 | L\* 30.23



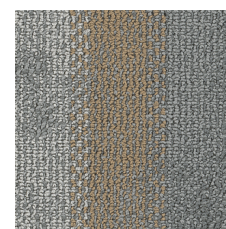
Ferric Metal 56483  
LRV 5.6 | L\* 28.29



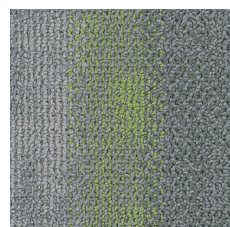
Oxidized Iron 56506  
LRV 3.8 | L\* 23.16



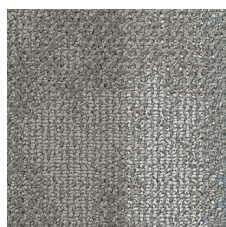
Blackened Iron 56508  
LRV 3.7 | L\* 22.52



Burnished Pewte 56516  
LRV 15.7 | L\* 46.54



Patina Steel 56536  
LRV 16.3 | L\* 47.41



Tarnished Alum 56761  
LRV 16.1 | L\* 47.14

## Informations Supplémentaires

\* To learn more about the recyclability of our products and our re[TURN], please visit [shawcontract.com/sustainability](https://shawcontract.com/sustainability).

\*\*Meets or exceeds all local and national regulations in country of manufacture.

\*\*\*This carpet is manufactured to be ADA compliant, but to be fully ADA compliant, the end-user must ensure the carpet is adhered to the floor and installed as outlined in the ADA standards.

[Installation Guidelines](#)

[Maintenance Guidelines](#)

Specifications are subject to nominal manufacturing variance. Material supply and/or manufacturing processes may necessitate changes without notice.

This product is an exclusive design and may not be duplicated in any manner. Use of this design in the creation of another product design is also strictly prohibited.

Visit [shawcontract.com/testing](https://shawcontract.com/testing) for more information.



**PVC-Free**

Corporate Headquarters +1 800 257 7429 | +1 706 532 7984 | Atlanta +1 404 853 7429 | Bengaluru +91 80 6773 0202 | Beijing +86 10 6568 588 | Chicago +1 312 467 1331 | Dubai +971 4 584 6956 | Hong Kong +852 2623 0371 | London +44 207 961 4120 | Los Angeles +1 800 233 1614 | Melbourne +61 3 9939 8543 | Mexico City +55 5010 7600 | Mumbai +91 22 6284 5050 | Nantong +86 400 800 7429 | New York +1 212 953 7429 | Paris +33 (0) 1 81 22 44 39 | San Francisco +1 415 955 1920 | Shanghai +86 21 3338 4000 | Singapore +65 6733 1811 | Sydney +61 800 556 302

© 2025 Shaw Industries Group, Inc., a Berkshire Hathaway Company  
July 29, 2025

3 of 3