

Tinge Tile

| | |
|----------|---|
| 製品型 | Carpet Tile |
| コレクション | Vertical Layers |
| スタイルナンバー | 5T156 |
| 建設 | マルチレベル パターンループ |
| 染色法 | 100% 原液着色 |
| 一次バックイング | 合成 |
| 二次バックイング | Ecoworx®タイル |
| 保護治療 | SSP@shaw 土壌保護保証 |
| 推奨接着剤 | LokDots, 3000 Carpet Tile 4 Gallon, 3000 Carpet Tile 1 Gallon, 4151 Multi-Use Carpet Tile 4 Gallon, 5000 Carpet Tile 1 Gallon, LokWorx Adhesive Tabs, 3800 Indoor Outdoor Carpet Tile 4 Gallon or 5000 Carpet Tile 4 Gallon |

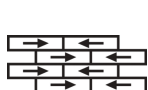


| | u.s. | metric |
|------------|-------------------------|-------------------------|
| 商品のサイズ | 9 in x 36 in | 23 cm x 91 cm |
| ボックスあたりの面積 | 45 ft ² | 4.18 m ² |
| ボックスあたりの個数 | 20 pcs | |
| ゲージ | 1/10 in | 39.4 per 10 cm |
| ステッチ | 9.0 per in | 36.5 per 10 cm |
| 完成した杭の厚さ | 0.092 in | 2.34 mm |
| 平均密度 | 6652 oz/yd ³ | 0.246 g/cm ³ |
| キロテックス | | 8.53 |
| 総厚 | 0.243 in | 6.17 mm |
| 房状の重量 | 17 oz/yd ² | 576.4 g/m ² |

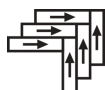
推奨インストール方法



Ashlar



Brick



Herringbone



Monolithic

データ + テスト

放射パネル (astm E648)

Class I

Nbs煙

Less Than 450

静電気の傾向

Less Than 3.5 kv

Cri Green Label Plus (glp)

USA GLP9968 | China GLP1263

錠剤テスト

Pass*

Adaコンプライアンス

>0.6、ADA 歩行面およびアクセス可能ルート用推奨静摩擦係数の基準に合致***

Test Reports may be included or listed by the manufacturing/inventory style number as opposed to the noted selling style number.

保証

生涯商用限定保証

コーディネート商品

LVT: **Unveil**
Carpet Tile: **Undertone Tile**

属性+認定

Certifications Below Apply Exclusively To The Carpet Tile Rug Itself And Not The Lokworx Tabs Adhesive

Health & Wellbeing

- Material Ingredient Transparency
- Cradle to Cradle Certified® | Silver Level (Version 4.0)
Health Product Declaration (HPD) | 1,000 ppm 開示
Living Building Challenge (LBC) | レッドリスト記載化学物質無配合
Declare | LBC 準拠
Declare | LBC 準拠
NSF 140 | ゴールド
CRI Green Label Plus (GLP) | GLP9968
- Indoor Air Quality

Climate Impact

- Environmental Product Declaration (EPD)
- Embodied Carbon (Cradle to Gate)
- Life-Cycle Carbon Emissions
- Total Recycled Content
- Product Packaging
- ISO14044、ISO14025 および EN15804 に基づく 第三者認証取得
3.69 kg CO₂/m²
Carbon Neutral
56% (Pre-Consumer 56% | Post-Consumer 0%)
100% リサイクル可能

Global Product Assessment

- Singapore Green Label | 認証取得
- CE Marking (EN 14041) | 第三者認証取得
- Environmental Guarantee* | Re[turn] Reclamation Program* | Through Our Environmental Guarantee, Shaw Pledges to Transport And Recycle Any Ecoworx Carpet.
- Country of Origin** | USA & China

Well V2 Contribution Credit

- X08 Hazardous Material Reduction Part 1: Limit Hazardous Materials Optimization – 1 pt
- X10 Volatile Compound Reduction Part 1 (A): Manage Volatile Organic Compounds (VOCs) Optimization – 1 pt
- X11 Long Term Emissions Control Part 2: Flooring Optimization – 1 pt
- X13 Enhanced Material Precaution Part 1: Select Optimized Materials Optimization – max 2 pts
- X14 Material Transparency Part 1: Promote Ingredient Disclosure Optimization – max 2 pts
- C2C Silver Level (Version 4.0)
- C2C Silver Level (Version 4.0)
- Green Label Plus Certification: GLP9968
C2C Silver Level (Version 4.0)
- C2C Silver Level (Version 4.0)

グリーンリード貢献クレジット

MRクレジット：製品の開示と最適化の構築
環境製品宣言-オプション1：環境製品宣言 (EPD)

MRクレジット：製品の開示と最適化の構築
材料成分-オプション1：材料成分レポート

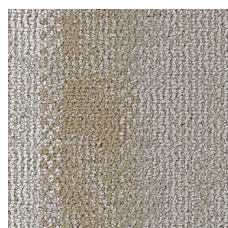
MRクレジット：製品の開示と最適化の構築
材料成分-オプション2：材料成分の最適化

MRクレジット：製品の開示と最適化の構築
原材料の調達-オプション2：リーダーシップの抽出実践

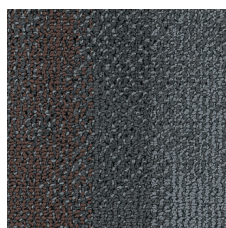
EQクレジット：低排出材料
オプション1：製品カテゴリの計算

MR Credit: Interiors Life-Cycle Impact Reduction
Option 3: Design for Flexibility

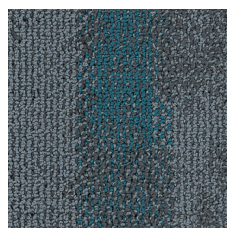
Available Colorways



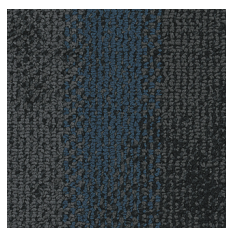
Weathered Birch 56112
LRV 22.6 | L* 54.69



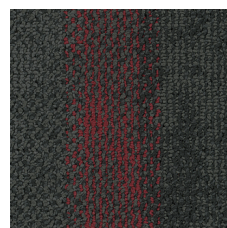
Industrial Conc 56482
LRV 6.3 | L* 30.23



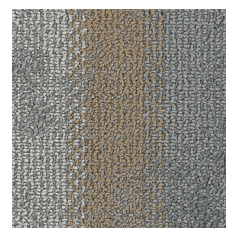
Ferric Metal 56483
LRV 5.6 | L* 28.29



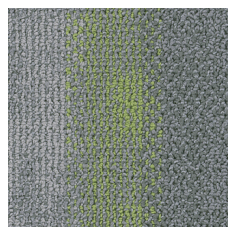
Oxidized Iron 56506
LRV 3.8 | L* 23.16



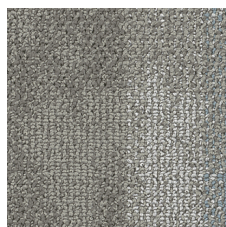
Blackened Iron 56508
LRV 3.7 | L* 22.52



Burnished Pewte 56516
LRV 15.7 | L* 46.54



Patina Steel 56536
LRV 16.3 | L* 47.41



Tarnished Alum 56761
LRV 16.1 | L* 47.14

追加情報

* To learn more about the recyclability of our products and our re[TURN], please visit shawcontract.com/sustainability.

**Meets or exceeds all local and national regulations in country of manufacture.

***This carpet is manufactured to be ADA compliant, but to be fully ADA compliant, the end-user must ensure the carpet is adhered to the floor and installed as outlined in the ADA standards.

[Installation Guidelines](#)

[Maintenance Guidelines](#)

Specifications are subject to nominal manufacturing variance. Material supply and/or manufacturing processes may necessitate changes without notice.

This product is an exclusive design and may not be duplicated in any manner. Use of this design in the creation of another product design is also strictly prohibited.

Visit shawcontract.com/testing for more information.

