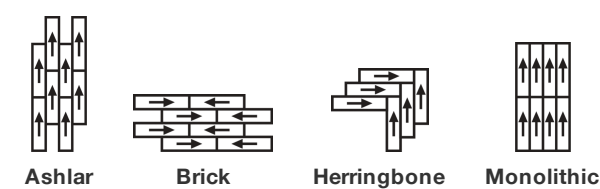


Tinge Tile

Tipo De Produto	Carpete Em Placas	
Coleção	Vertical Layers	
Número Do Produto	5T156	
Construção	Padrão Multinível Bouclé	
Método De Tingimento	100% Solution Dyed	
Base Primária	Sintético	
Base Secundária	Base Ecoworx®	
Tratamentos De Proteção	SSP® Shaw Proteção Anti-Manchas	
Adesivo Recomendado	LokDots, 3000 Carpet Tile 4 Gallon, 3000 Carpet Tile 1 Gallon, 4151 Multi-Use Carpet Tile 4 Gallon, 5000 Carpet Tile 1 Gallon, LokWorx Adhesive Tabs, 3800 Indoor Outdoor Carpet Tile 4 Gallon or 5000 Carpet Tile 4 Gallon	
	u.s.	metric
Tamanho Do Produto	9 in x 36 in	23 cm x 91 cm
Área Por Caixa	45 ft²	4.18 m²
Peças Por Caixa	20 pcs	
Calibre	1/10 in	39.4 per 10 cm
Pontos	9.0 per in	36.5 per 10 cm
Espessura Da Fibra Acabada	0.092 in	2.34 mm
Densidade Média	6652 oz/yd³	0.246 g/cm³
Kilotex		8.53
Espessura Total	0.243 in	6.17 mm
Peso Da Fibra	17 oz/yd²	576.4 g/m²



Método De Instalação Recomendado



Dados + Teste

Painel Radiante (Astm E648)	Class I
Nbs Fumaça	Less Than 450
Propensão Eletrostática	Less Than 3.5 kv
Cri Green Label Plus (Bpl)	USA GLP9968 China GLP1263
Teste De Ignição (Pill)	Pass*
Ada Compliance	≥0.6, Atende as recomendações do coeficiente de fricção estático para as superfícies caminháveis ADA e rotas acessíveis***

Test Reports may be included or listed by the manufacturing/inventory style number as opposed to the noted selling style number.

Garantias

Garantia Comercial Vitalícia Limitada

Produtos Coordenados

LVT: **Unveil**
Carpet Tile: **Uncover Tile, Expose Tile, Relief Tile, Undertone Tile**

Atributos + Certificações

Certifications Below Apply Exclusively To The Carpet Tile Rug Itself And Not The Lokworx Tabs Adhesive

Health & Wellbeing

- Material Ingredient Transparency
- Cradle to Cradle Certified® | Silver Level (Version 4.0)
Health Product Declaration (HPD) | Divulgado 1,000 ppm
Living Building Challenge (LBC) | Livre De Químicos Do Red List
Declare | Compatível LBC
Declare | Compatível LBC
NSF 140 | Ouro
CRI Green Label Plus (GLP) | GLP9968
- Indoor Air Quality

Climate Impact

- Environmental Product Declaration (EPD)
- Embodied Carbon (Cradle to Gate)
- Life-Cycle Carbon Emissions
- Total Recycled Content
- Product Packaging
- 3rd Party Certified De Acordo Com ISO14044, ISO14025 & EN15804
3.69 kg CO₂/m²
Carbon Neutral
56% (Pre-Consumer 56% | Post-Consumer 0%)
100% Reciclável

Global Product Assessment

- Singapore Green Label | Certificado
- CE Marking (EN 14041) | Certificado 3rd Party
- Environmental Guarantee* | Re[turn] Reclamation Program* | Through Our Environmental Guarantee, Shaw Pledges to Transport And Recycle Any Ecoworx Carpet.
- Country of Origin** | USA & China

Well V2 Contribution Credit

- X08 Hazardous Material Reduction Part 1: Limit Hazardous Materials Optimization – 1 pt
- X10 Volatile Compound Reduction Part 1 (A): Manage Volatile Organic Compounds (VOCs) Optimization – 1 pt
- X11 Long Term Emissions Control Part 2: Flooring Optimization – 1 pt
- X13 Enhanced Material Precaution Part 1: Select Optimized Materials Optimization – max 2 pts
- X14 Material Transparency Part 1: Promote Ingredient Disclosure Optimization – max 2 pts
- C2C Silver Level (Version 4.0)
- C2C Silver Level (Version 4.0)
- Green Label Plus Certification: GLP9968
C2C Silver Level (Version 4.0)
- C2C Silver Level (Version 4.0)

Crédito De Contribuição

MR Credit: Divulgação e otimização de produtos de construção
Declarações ambientais do produto - Opção 1: Declaração ambiental do produto (EPD)

MR Credit: Divulgação e otimização de produtos de construção
Ingredientes materiais - Opção 1: Relatório de ingredientes materiais

MR Credit: Divulgação e otimização de produtos de construção
Ingredientes do material - Opção 2: Otimização do ingrediente do material

MR Credit: Divulgação e otimização de produtos de construção
Fornecimento de matérias-primas - Opção 2: Práticas de extração de liderança

Crédito de EQ: Materiais de baixa emissão
Opção 1: cálculos de categoria de produto

MR Credit: Interiors Life-Cycle Impact Reduction
Option 3: Design for Flexibility

3rd Party Certified in Accordance with ISO 14044, ISO 14025 & EN15804

C2C Silver Level (Version 4.0) or HPD (Version 2.1)

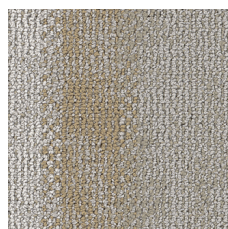
C2C Silver Level (Version 4.0)

Environmental Guarantee: Re[turn] Reclamation Program* | Through Our Environmental Guarantee, Shaw Pledges to Transport And Recycle Any Ecoworx® Carpet.

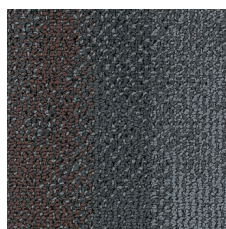
Green Label Plus Certification: GLP9968

Ecoworx® Tile with Lokdots Installation System

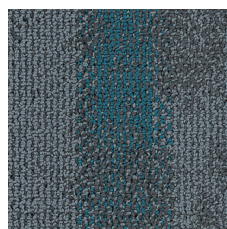
Available Colorways



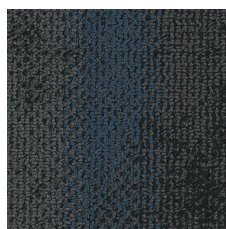
Weathered Birch 56112
LRV 22.6 | L* 54.69



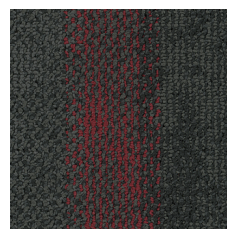
Industrial Conc 56482
LRV 6.3 | L* 30.23



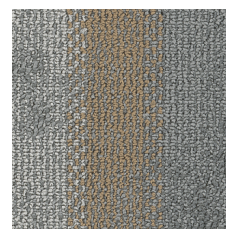
Ferric Metal 56483
LRV 5.6 | L* 28.29



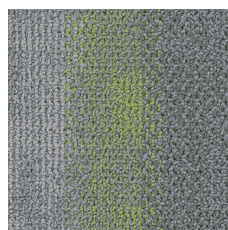
Oxidized Iron 56506
LRV 3.8 | L* 23.16



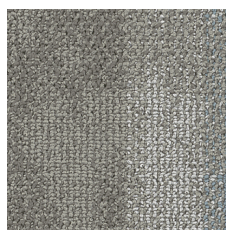
Blackened Iron 56508
LRV 3.7 | L* 22.52



Burnished Pewte 56516
LRV 15.7 | L* 46.54



Patina Steel 56536
LRV 16.3 | L* 47.41



Tarnished Alum 56761
LRV 16.1 | L* 47.14

Informação Adicional

* To learn more about the recyclability of our products and our re[TURN], please visit shawcontract.com/sustainability.

**Meets or exceeds all local and national regulations in country of manufacture.

***This carpet is manufactured to be ADA compliant, but to be fully ADA compliant, the end-user must ensure the carpet is adhered to the floor and installed as outlined in the ADA standards.

[Installation Guidelines](#)

[Maintenance Guidelines](#)

Specifications are subject to nominal manufacturing variance. Material supply and/or manufacturing processes may necessitate changes without notice.

This product is an exclusive design and may not be duplicated in any manner. Use of this design in the creation of another product design is also strictly prohibited.

Visit shawcontract.com/testing for more information.

