

Base Hexagon Tile

製品型	Carpet Tile	
コレクション	Configure	
スタイルナンバー	5T159	
建設	マルチレベルパターン/カットループ	
ファイバ	Ecosolution Q100™ Nylon	
染色法	100% 原液着色	
一次バックキング	合成	
二次バックキング	Ecworx®タイル	
保護治療	SSP@shaw 土壌保護保証	
推奨接着剤	LokDots, 3000 Carpet Tile 1 Gallon, 4151 Multi-Use Carpet Tile 4 Gallon, 5000 Carpet Tile 1 Gallon, LokWorx Adhesive Tabs, 3800 Indoor Outdoor Carpet Tile 4 Gallon, 5000 Carpet Tile 4 Gallon or 3000 Carpet Tile 4 Gallon	
	u.s.	metric
商品のサイズ	28.8 in x 24.9 in	73.2 cm x 63.2 cm
ボックスあたりの面積	44.89 ft²	4.17 m²
ボックスあたりの個数	12 pcs	
ゲージ	1/12 in	47.2 per 10 cm
ステッチ	9.0 per in	35.0 per 10 cm
完成した杭の厚さ	0.093 in	2.36 mm
平均密度	10,065 oz/yd(3)	0.372 g/cm³
キロテックス		15.07
総厚	0.244 in	6.2 mm
房状の重量	26 oz/yd²	881.5 g/m²



推奨インストール方法

Monolithic

Random

Diagonal

データ + テスト

放射パネル (astm E648)	Class I
Nbs煙	Less Than 450
静電気の傾向	Less Than 3.5 kv
Cri Green Label Plus (glp)	GLP9968
錠剤テスト	Pass*
Adaコンプライアンス	>0.6、ADA 歩行面およびアクセス可能ルート用推奨静摩擦係数の基準に合致***
Test Reports may be included or listed by the manufacturing/inventory style number as opposed to the noted selling style number.	

保証

生涯商用限定保証

コーディネート商品

Carpet Tile: **Plane Hexagon Tile, Contact Hexagon Tile, Color Shift Hexagon Tile**

属性+認定

Certifications Below Apply Exclusively To The Carpet Tile Rug Itself And Not The Lokworx Tabs Adhesive

Health & Wellbeing

Material Ingredient Transparency

Cradle to Cradle Certified® | Silver Level (Version 4.0)  
Health Product Declaration (HPD) | 1,000 ppm 開示  
Living Building Challenge (LBC) | レッドリスト記載化学物質無配合  
Declare | LBC 準拠  
NSF 140 | ゴールド  
Greenhealth Approved | Yes  
CRI Green Label Plus (GLP) | GLP9968

Indoor Air Quality

Climate Impact

Environmental Product Declaration (EPD)

ISO14044、ISO14025 および EN15804 に基づく 第三者認証取得

Embodied Carbon (Cradle to Gate)

3.87 kg CO<sub>2</sub>/m<sup>2</sup>

Life-Cycle Carbon Emissions

Carbon Neutral

Total Recycled Content

60% (Pre-Consumer 60% | Post-Consumer 0%)

Product Packaging

100% リサイクル可能

Global Product Assessment

Singapore Green Label | 認証取得  
CE Marking (EN 14041) | 第三者認証取得  
Environmental Guarantee\* | Re[turn] Reclamation Program\* | Through Our Environmental Guarantee, Shaw Pledges to Transport And Recycle Any Ecoworx Carpet.  
Country of Origin\*\* | Imported

グリーンリード貢献クレジット

MRクレジット：製品の開示と最適化の構築  
環境製品宣言-オプション1：環境製品宣言 (EPD)

3rd Party Certified in Accordance with ISO14044, ISO14025 & EN15804

MRクレジット：製品の開示と最適化の構築  
材料成分-オプション1：材料成分レポート

C2C Silver Level (Version 4.0) or HPD (Version 2.1)

MRクレジット：製品の開示と最適化の構築  
材料成分-オプション2：材料成分の最適化

C2C Silver Level (Version 4.0)

MR Credit: Building Product Disclosure and Optimization  
Sourcing of Raw Materials - Option 2: Leadership Extraction Practices

Environmental Guarantee: Re[turn] Reclamation Program\* | Through Our Environmental Guarantee, Shaw Pledges to Transport And Recycle Any Ecoworx Carpet.

EQクレジット：低排出材料  
オプション1：製品カテゴリの計算

Green Label Plus Certification: GLP9968

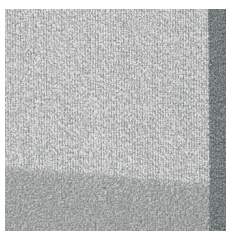
MR Credit: Interiors Life-Cycle Impact Reduction  
Option 3: Design for Flexibility

Ecoworx Tile with Lokdots Installation System

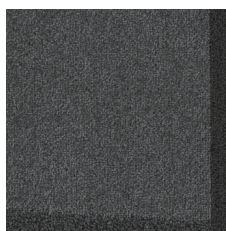
### Available Colorways



Shift 59104  
LRV 12.2 | L\* 41.51



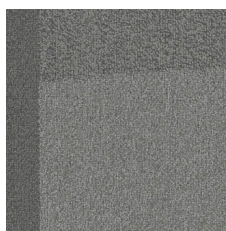
Scale 59501  
LRV 28.8 | L\* 60.62



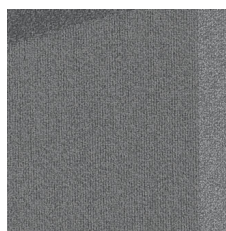
Form 59505  
LRV 4.7 | L\* 26.01



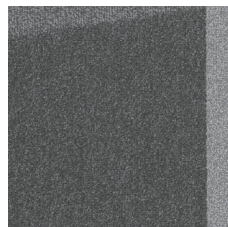
Interact 59506  
LRV 3.4 | L\* 21.72



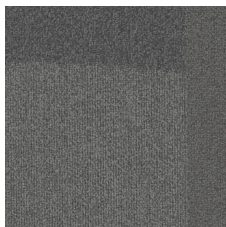
Proportion 59518  
LRV 12 | L\* 41.24



Progression 59580  
LRV 13.1 | L\* 42.89



Connect 59581  
LRV 8.7 | L\* 35.31



Dialogue 59596  
LRV 7.1 | L\* 32.07



Spatial 59597  
LRV 6 | L\* 29.36

### 追加情報

\* To learn more about the recyclability of our products and our re[TURN], please visit [shawcontract.com/sustainability](https://shawcontract.com/sustainability).

\*\*Meets or exceeds all local and national regulations in country of manufacture.

\*\*\*This carpet is manufactured to be ADA compliant, but to be fully ADA compliant, the end-user must ensure the carpet is adhered to the floor and installed as outlined in the ADA standards.

[Installation Guidelines](#)

[Maintenance Guidelines](#)

Specifications are subject to nominal manufacturing variance. Material supply and/or manufacturing processes may necessitate changes without notice.

This product is an exclusive design and may not be duplicated in any manner. Use of this design in the creation of another product design is also strictly prohibited.

Visit [shawcontract.com/testing](https://shawcontract.com/testing) for more information.



Corporate Headquarters +1 800 257 7429 | +1 706 532 7984 | Atlanta +1 404 853 7429 | Bengaluru +91 80 6773 0202 | Beijing +86 10 6568 588 | Chicago +1 312 467 1331 | Dubai +971 4 584 6956 | Hong Kong +852 2623 0371 | Latin America (Miami) +1 305 827 5912 | London +44 207 961 4120 | Los Angeles +1 800 233 1614 | Melbourne +61 3 9939 8543 | Mexico City +55 5010 7600 | Mumbai +91 22 6284 5050 | Nantong +86 400 800 7429 | New York +1 212 953 7429 | Paris +33 (0) 1 81 22 44 39 | San Francisco +1 415 955 1920 | Santiago +562 2431 5000 x 550 | São Paulo +55 11 3071 1702 | Shanghai +86 21 3338 4000 | Singapore +65 6733 1811 | Sydney +61 800 556 302