

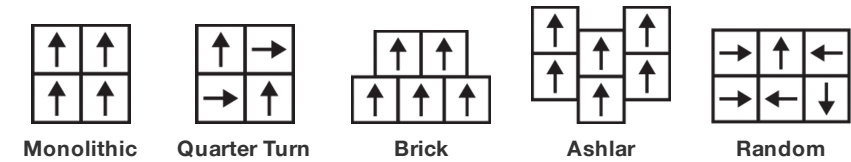
## Engage Tile

製品型	Carpet Tile
コレクション	Mindful Play
スタイルナンバー	5T187
建設	マルチレベルパターンループ
ファイバ	Solution Qextreme®ナイロン
染色法	100% 原液着色
一次バックキング	合成
二次バックキング	Ecoworx®タイル
保護治療	固有の耐汚れ性
推奨接着剤	LokDots, 3000 Carpet Tile 4 Gallon, 3000 Carpet Tile 1 Gallon, 4151 Multi-Use Carpet Tile 4 Gallon, 5000 Carpet Tile 1 Gallon, LokWorx Adhesive Tabs, 3800 Indoor Outdoor Carpet Tile 4 Gallon or 5000 Carpet Tile 4 Gallon

	u.s.	metric
商品のサイズ	24 in x 24 in	61 cm x 61 cm
ボックスあたりの面積	48 ft <sup>2</sup>	4.46 m <sup>2</sup>
ボックスあたりの個数	12 pcs	
ゲージ	1/10 in	39.4 per 10 cm
ステッチ	10.0 per in	40.5 per 10 cm
完成した杭の厚さ	0.095 in	2.41 mm
平均密度	6063 oz/yd <sup>3</sup>	0.224 g/cm <sup>3</sup>
キロテックス		9.26
総厚	0.226 in	5.74 mm
房状の重量	16 oz/yd <sup>2</sup>	542.5 g/m <sup>2</sup>



### 推奨インストール方法



### データ + テスト

放射パネル (astm E648)	Class I
Nbs煙	Less Than 450
静電気の傾向	Less Than 3.5 kv
Cri Green Label Plus (glp)	GLP9968
錠剤テスト	Pass*
Adaコンプライアンス	>0.6、ADA 歩行面およびアクセス可能ルート用推奨静摩擦係数の基準に合致***

Test Reports may be included or listed by the manufacturing/inventory style number as opposed to the noted selling style number.

### 保証

#### 生涯商用限定保証

コーディネート商品

LVT: **Inspire**  
Carpet Tile: **Think Tile, Impact Tile**

属性+認定

Certifications Below Apply Exclusively To The Carpet Tile Rug Itself And Not The Lokworx Tabs Adhesive

Health & Wellbeing

Material Ingredient Transparency

Cradle to Cradle Certified® | シルバーレベル (バージョン 3.1)  
Health Product Declaration (HPD) | 1,000 ppm 開示  
Living Building Challenge (LBC) | レッドリスト記載化学物質無配合  
Declare | LBC 準拠  
NSF 140 | ゴールド  
CRI Green Label Plus (GLP) | GLP9968

Indoor Air Quality

Climate Impact

Environmental Product Declaration (EPD)  
Total Recycled Content  
Product Packaging

ISO 14044、ISO 14025 および EN15804 に基づく 第三者認証取得  
37% (Pre-Consumer 37% | Post-Consumer 0%)  
100% リサイクル可能

Global Product Assessment

Singapore Green Label | 認証取得  
CE Marking (EN 14041) | 第三者認証取得  
Environmental Guarantee\* | Re[turn] Reclamation Program\* | Through Our Environmental Guarantee, Shaw Pledges to Transport And Recycle Any Ecoworx Carpet.  
Country of Origin\*\* | Imported

Well V2 Contribution Credit

X08 Hazardous Material Reduction Part 1: Limit Hazardous Materials Optimization – 1 pt  
X10 Volatile Compound Reduction Part 1 (A): Manage Volatile Organic Compounds (VOCs) Optimization – 1 pt  
X11 Long Term Emissions Control Part 2: Flooring Optimization – 1 pt  
X13 Enhanced Material Precaution Part 1: Select Optimized Materials Optimization – max 2 pts  
X14 Material Transparency Part 1: Promote Ingredient Disclosure Optimization – max 2 pts

「C2C」 シルバーレベル (バージョン3.1)  
「C2C」 シルバーレベル (バージョン3.1)  
Green Label Plus Certification: GLP9968  
「C2C」 シルバーレベル (バージョン3.1)  
「C2C」 シルバーレベル (バージョン3.1)

グリーンリード貢献クレジット

MRクレジット：製品の開示と最適化の構築  
環境製品宣言-オプション1：環境製品宣言（EPD）  
MRクレジット：製品の開示と最適化の構築  
材料成分-オプション1：材料成分レポート  
MRクレジット：製品の開示と最適化の構築  
材料成分-オプション2：材料成分の最適化  
MRクレジット：製品の開示と最適化の構築  
原材料の調達-オプション2：リーダーシップの抽出実践  
EQクレジット：低排出材料  
オプション1：製品カテゴリの計算  
MR Credit: Interiors Life-Cycle Impact Reduction  
Option 3: Design for Flexibility

3rd Party Certified in Accordance with ISO14044, ISO14025 & EN15804  
HPD (Version 2.1) or C2C Silver Level (Version 3.1)  
「C2C」 シルバーレベル (バージョン3.1)  
Environmental Guarantee: Re[turn] Reclamation Program\* | Through Our Environmental Guarantee, Shaw Pledges to Transport And Recycle Any Ecoworx® Carpet.  
Green Label Plus Certification: GLP9968  
Ecoworx® Tile with Lokdots Installation System

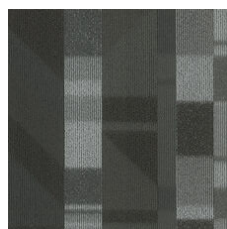
## Available Colorways



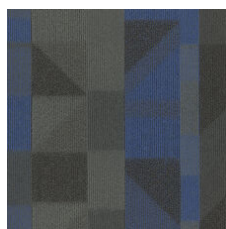
Clarity Lime 86111  
LRV 20.3 | L\* 52.15



Clarity Orange 86112  
LRV 20.2 | L\* 52.03



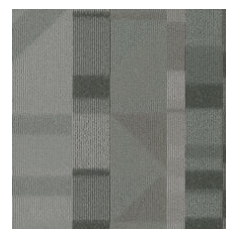
Escape Silver 86505  
LRV 6.4 | L\* 30.4



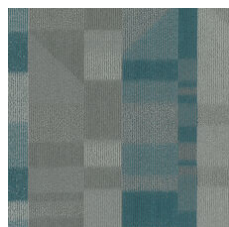
Escape Blue 86506  
LRV 3.3 | L\* 21.22



Nuance Orange 86515  
LRV 12.9 | L\* 42.54



Nuance Charcoal 86516  
LRV 13.6 | L\* 43.59



Experience Teal 86535  
LRV 11.7 | L\* 40.68



Experience Lime 86536  
LRV 14.5 | L\* 44.9



Transform Red 86585  
LRV 7.3 | L\* 32.42



Transform Teal 86586  
LRV 5.9 | L\* 29.05



Achieve Purple 86760  
LRV 6 | L\* 29.33



Achieve Blue 86761  
LRV 5.1 | L\* 27.02

## 追加情報

\* To learn more about the recyclability of our products and our re[TURN], please visit [shawcontract.com/sustainability](https://shawcontract.com/sustainability).

\*\*Meets or exceeds all local and national regulations in country of manufacture.

\*\*\*This carpet is manufactured to be ADA compliant, but to be fully ADA compliant, the end-user must ensure the carpet is adhered to the floor and installed as outlined in the ADA standards.

[Installation Guidelines](#)

[Maintenance Guidelines](#)

Specifications are subject to nominal manufacturing variance. Material supply and/or manufacturing processes may necessitate changes without notice.

This product is an exclusive design and may not be duplicated in any manner. Use of this design in the creation of another product design is also strictly prohibited.

Visit [shawcontract.com/testing](https://shawcontract.com/testing) for more information.



**PVC-Free**

Corporate Headquarters +1 800 257 7429 | +1 706 532 7984 | Atlanta +1 404 853 7429 | Bengaluru +91 80 6773 0202 | Beijing +86 10 6568 588 | Chicago +1 312 467 1331 | Dubai +971 4 584 6956 | Hong Kong +852 2623 0371 | London +44 207 961 4120 | Los Angeles +1 800 233 1614 | Melbourne +61 3 9939 8543 | Mexico City +55 5010 7600 | Mumbai +91 22 6284 5050 | Nantong +86 400 800 7429 | New York +1 212 953 7429 | Paris +33 (0) 1 81 22 44 39 | San Francisco +1 415 955 1920 | Shanghai +86 21 3338 4000 | Singapore +65 6733 1811 | Sydney +61 800 556 302

© 2025 Shaw Industries Group, Inc., a Berkshire Hathaway Company  
April 5, 2025

3 of 3