

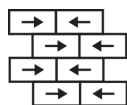
Vapor Tile

Nom De Style	Carreaux De Tapis
Collection	Material Matters
Numéro De Style	5T036
Construction	Boucle De Motif à Plusieurs Niveaux
Fibre	Ecosolution Q100™ Nylon
Endos Primaire	Synthétique
Endos Secondaire	Ecoworx® Tile
Traitements Protecteur	Protection Des Sols SSP® Shaw
Adhésif Recommandé	3800 Indoor Outdoor Carpet Tile 4 Gallon, 5000 Carpet Tile 4 Gallon, LokDots, 3000 Carpet Tile 4 Gallon, 3000 Carpet Tile 1 Gallon, 4151 Multi-Use Carpet Tile 4 Gallon, 5000 Carpet Tile 1 Gallon or LokWorx Adhesive Tabs

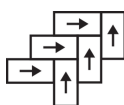


	u.s.	metric
Dimensions Du Produit	18 in x 36 in	46 cm x 91 cm
Surface Par Carton	45 ft²	4.18 m²
Pièces Par Carton	10 pcs	
Jauge	1/12 in	47.2 per 10 cm
Compte De Mailles	9.5 per in	38.5 per 10 cm
Épaisseur Fini	0.100 in	2.54 mm
Densité	6480 oz/yd³	0.24 g/cm³
Kilotex		10.41
Poids De La Fibre Touffetée	0.244 in	6.2 mm
Poids De La Fibre Touffetée	18 oz/yd²	610.3 g/m²

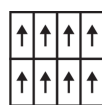
Méthodes d'Installation Conseillées



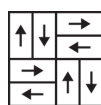
Brick



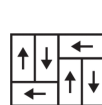
Herringbone



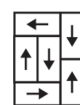
Monolithic



Basketweave



Half Basketweave



Boxed In

Spécifications Du Rendement + Tests Et Essai

Essai Au Panneau Radiant (Astm E648)	Class I
Densité Du Fumée	Less Than 450
Statique	Less Than 3.5 kv
Label Cri Green Label Plus (Glp)	GLP5563
Inflamabilité	Pass*
Ada Conformité	≥0.6, conforme au coefficient de frottement statique pour les surfaces de passage et d'accessibilité simplifiée (ADA).***

Test Reports may be included or listed by the manufacturing/inventory style number as opposed to the noted selling style number.

Garanties

Commerciale Limitée

Coordination Des Produits

Carpet Tile: **Haze Tile, Fringe Tile, Wander Tile, Embark Tile**

Attributs + Certifications

Certifications Below Apply Exclusively To The Carpet Tile Rug Itself And Not The Lokworx Tabs Adhesive

Health & Wellbeing

Material Ingredient Transparency

Cradle to Cradle Certified® | Silver Level (Version 4.0)
Health Product Declaration (HPD) | Divulgence De 1 000 ppm
Living Building Challenge (LBC) | Exempt De Produits Chimiques De La
Liste Rouge
Declare | Conforme LBC
NSF 140 | or
CRI Green Label Plus (GLP) | GLP5563

Indoor Air Quality

Climate Impact

Environmental Product Declaration (EPD)

Certifié Par Une Tierce Partie Conformément Aux Normes ISO 14044,
ISO 14025 Et EN 15804

Total Recycled Content

57% (Pre-Consumer 57% | Post-Consumer 0%)

Product Packaging

100% Recyclable

Global Product Assessment

Singapore Green Label | Agréé**CE Marking (EN 14041) | Certifié Par Un Tiers**

Environmental Guarantee* | Re[turn] Reclamation Program* | Through
Our Environmental Guarantee, Shaw Pledges to Transport And
Recycle Any Ecoworx Carpet.

Country of Origin | USA & China**

Well V2 Contribution Credit

X08 Réduction des matières dangereuses Partie 1 : Optimisation des limites des matières dangereuses – 1 pt

C2C Silver Level (Version 4.0)

X10 Réduction des composés volatils Partie 1 (A) : Gérer l'optimisation des composés organiques volatils (COV) - 1 pt

C2C Silver Level (Version 4.0)

X11 Contrôle des émissions à long terme Partie 2 : Optimisation des revêtements de sol – 1 pt

Green Label Plus Certification: GLP5563

X13 Enhanced Material Precaution Part 1: Select Optimized Materials Optimization - max 2 pts

C2C Silver Level (Version 4.0)

X14 Transparence des matériaux Partie 1 : Promouvoir l'optimisation de la divulgation des ingrédients - max 2 pts

C2C Silver Level (Version 4.0)

Contribution Au Certificat Vert Leed

« Crédit MR : Divulgence et optimisation des produits de construction

3rd Party Certified in Accordance with ISO14044, ISO14025 & EN15804

« Crédit MR : Divulgence et optimisation des produits de construction

HPD (Version 2.1) or C2C Silver Level (Version 4.0)

« Crédit MR : Divulgence et optimisation des produits de construction

C2C Silver Level (Version 4.0)

« Crédit MR : Divulgence et optimisation des produits de construction

Environmental Guarantee: Re[turn] Reclamation Program* | Through
Our Environmental Guarantee, Shaw Pledges to Transport And
Recycle Any Ecoworx® Carpet.

Crédit EQ : matériaux faibles émissions

Green Label Plus Certification: GLP5563

MR Credit: Interiors Life-Cycle Impact Reduction Option 3: Design for Flexibility

Ecworx® Tile with Lokdots Installation System

Available Colorways



Informations Supplémentaires

* To learn more about the recyclability of our products and our re[TURN], please visit shawcontract.com/sustainability.

**Meets or exceeds all local and national regulations in country of manufacture.

***This carpet is manufactured to be ADA compliant, but to be fully ADA compliant, the end-user must ensure the carpet is adhered to the floor and installed as outlined in the ADA standards.

[Installation Guidelines](#)

[Maintenance Guidelines](#)

Specifications are subject to nominal manufacturing variance. Material supply and/or manufacturing processes may necessitate changes without notice.

This product is an exclusive design and may not be duplicated in any manner. Use of this design in the creation of another product design is also strictly prohibited.

Visit shawcontract.com/testing for more information.



PVC-Free

Corporate Headquarters +1 800 257 7429 | +1 706 532 7984 | Atlanta +1 404 853 7429 | Bengaluru +91 80 6773 0202 | Beijing +86 10 6568 588 | Chicago +1 312 467 1331 | Dubai +971 4 584 6956 | Hong Kong +852 2623 0371 | London +44 207 961 4120 | Los Angeles +1 800 233 1614 | Melbourne +61 3 9939 8543 | Mexico City +55 5010 7600 | Mumbai +91 22 6284 5050 | Nantong +86 400 800 7429 | New York +1 212 953 7429 | Paris +33 (0) 1 81 22 44 39 | San Francisco +1 415 955 1920 | Shanghai +86 21 3338 4000 | Singapore +65 6733 1811 | Sydney +61 800 556 302

© 2025 Shaw Industries Group, Inc., a Berkshire Hathaway Company
July 29, 2025

3 of 3