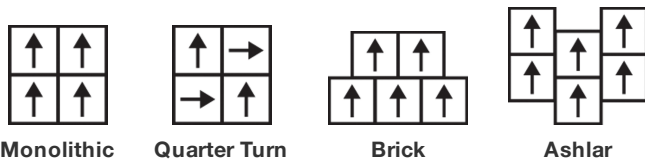


Dye Lab Tile

製品型	Carpet Tile	
コレクション	Dye Lab	
スタイルナンバー	5T041	
建設	カットパイル	
一次バックイング	合成	
二次バックイング	Ecworx®タイル	
保護治療	SSP®shaw 土壌保護保証	
推奨接着剤	LokDots, 3000 Carpet Tile 4 Gallon, 3000 Carpet Tile 1 Gallon, 4151 Multi-Use Carpet Tile 4 Gallon, 5000 Carpet Tile 1 Gallon, LokWorx Adhesive Tabs, 3800 Indoor Outdoor Carpet Tile 4 Gallon or 5000 Carpet Tile 4 Gallon	
	U.S.	metric
商品のサイズ	24 in x 24 in	61 cm x 61 cm
ボックスあたりの面積	48 ft²	4.46 m²
ボックスあたりの個数	12 pcs	
ゲージ	1/10 in	39.4 per 10 cm
ステッチ	10.5 per in	42.5 per 10 cm
完成した杭の厚さ	0.175 in	4.45 mm
平均密度	7406 oz/yd³	0.274 g/cm³
キロテックス		10.11
総厚	0.330 in	8.38 mm
房状の重量	36 oz/yd²	1220.6 g/m²



推奨インストール方法



データ + テスト

放射パネル (astm E648)	Class I
Nbs煙	Less Than 450
静電気の傾向	Less Than 3.5 kv
Cri Green Label Plus (glp)	GLP5563
錠剤テスト	Pass*
Adaコンプライアンス	>0.6、ADA 歩行面およびアクセス可能ルート用推奨静摩擦係数の基準に合致***

Test Reports may be included or listed by the manufacturing/inventory style number as opposed to the noted selling style number.

保証

生涯商用限定保証

属性+認定

Certifications Below Apply Exclusively To The Carpet Tile Rug Itself And Not The Lokworx Tabs Adhesive

Health & Wellbeing

Material Ingredient Transparency

Cradle to Cradle Certified® | Silver Level (Version 4.0)
Health Product Declaration (HPD) | 1,000 ppm 開示
Living Building Challenge (LBC) | レッドリスト記載化学物質無配合
Declare | LBC 準拠
NSF 140 | ゴールド
CRI Green Label Plus (GLP) | GLP5563

Indoor Air Quality

Climate Impact

Environmental Product Declaration (EPD)

Product Packaging

ISO14044、ISO14025 および EN15804 に基づく 第三者認証取得
100% リサイクル可能

Global Product Assessment

Singapore Green Label | 認証取得
CE Marking (EN 14041) | 第三者認証取得
Environmental Guarantee* | Re[turn] Reclamation Program* | Through Our Environmental Guarantee, Shaw Pledges to Transport And Recycle Any Ecoworx Carpet.
Country of Origin | Imported**

Well V2 Contribution Credit

X08 Hazardous Material Reduction Part 1: Limit Hazardous Materials Optimization – 1 pt

C2C Silver Level (Version 4.0)

X10 Volatile Compound Reduction Part 1 (A): Manage Volatile Organic Compounds (VOCs) Optimization – 1 pt

C2C Silver Level (Version 4.0)

X11 Long Term Emissions Control Part 2: Flooring Optimization – 1 pt

Green Label Plus Certification: GLP5563

X13 Enhanced Material Precaution Part 1: Select Optimized Materials Optimization – max 2 pts

C2C Silver Level (Version 4.0)

X14 Material Transparency Part 1: Promote Ingredient Disclosure Optimization – max 2 pts

C2C Silver Level (Version 4.0)

グリーンリード貢献クレジット

MRクレジット：製品の開示と最適化の構築
 環境製品宣言-オプション1：環境製品宣言 (EPD)

3rd Party Certified in Accordance with ISO14044, ISO14025 & EN15804

MRクレジット：製品の開示と最適化の構築
 材料成分-オプション1：材料成分レポート

HPD (Version 2.1) or C2C Silver Level (Version 4.0)

MRクレジット：製品の開示と最適化の構築
 材料成分-オプション2：材料成分の最適化

C2C Silver Level (Version 4.0)

MRクレジット：製品の開示と最適化の構築
 原材料の調達-オプション2：リーダーシップの抽出実践

Environmental Guarantee: Re[turn] Reclamation Program* | Through Our Environmental Guarantee, Shaw Pledges to Transport And Recycle Any Ecoworx® Carpet.

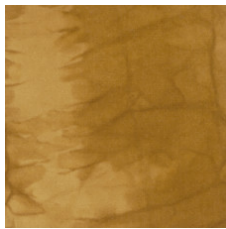
EQクレジット：低排出材料
 オプション1：製品カテゴリの計算

Green Label Plus Certification: GLP5563

MR Credit: Interiors Life-Cycle Impact Reduction
 Option 3: Design for Flexibility

Ecworx® Tile with Lokdots Installation System

Available Colorways



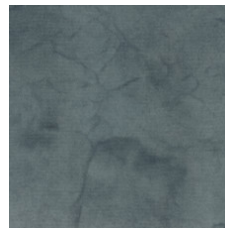
Osage Orange 41202
LRV 17.2 (range 12.4 - 21.5) | L* 48.19 (range 41.91 - 53.48)



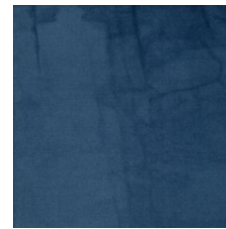
Fustic Wood 41316
LRV 3 (range 2.8 - 3.2) | L* 20.05 (range 19.23 - 20.89)



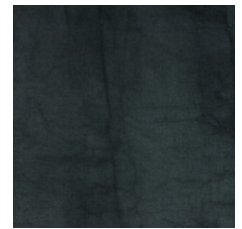
Fustic Saxon 41396
LRV 8.8 (range 6.6 - 10.4) | L* 35.41 (range 30.89 - 38.56)



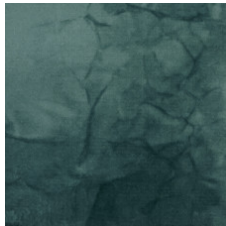
Black Walnut 41402
LRV 12.7 (range 11.6 - 14.6) | L* 42.16 (range 40.6 - 45.04)



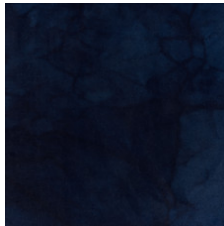
Saxon 41462
LRV 5.7 (range 3.8 - 7.6) | L* 28.32 (range 23.11 - 33.17)



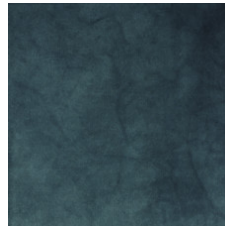
Cornflower 41480
LRV 4.8 (range 3.1 - 6.3) | L* 25.8 (range 20.36 - 30.10)



Knotweed 41491
LRV 12.0 (range 10.6 - 12.8) | L* 41.2 (range 38.9 - 42.43)



Indigo 41496
LRV 2.9 (range 2.1 - 3.7) | L* 19.6 (range 16.14 - 22.66)



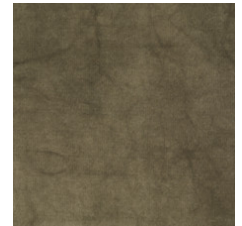
Woad 41497
LRV 4.0 (range 2.6 - 5.5) | L* 23.4 (range 18.20 - 27.99)



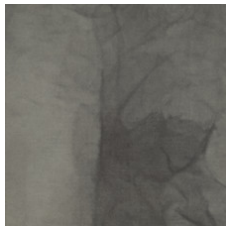
Sumac 41504
LRV 9.2 (range 6.4 - 11.8) | L* 36.1 (range 30.43 - 40.92)



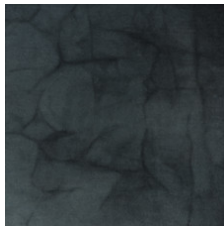
Logwood 41505
LRV 3.1 (range 2.2 - 4.3) | L* 20.4 (range 16.71 - 24.62)



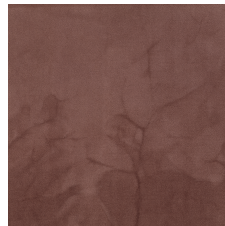
Black Tea 41516
LRV 10.1 (range 8.8 - 11.9) | L* 38.0 (range 35.55 - 41.09)



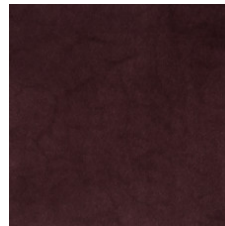
Henna 41535
LRV 12.6 (range 10.7 - 13.8) | L* 42.09 (range 39 - 43.97)



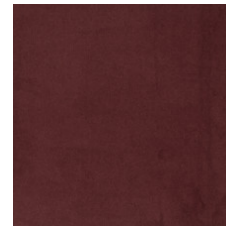
Iron 41580
LRV 6.8 (range 4.7 - 8.4) | L* 31.12 (range 25.83 - 34.8)



Sandalwood 41665
LRV 13.2 (range 11.7 - 15) | L* 42.99 (range 40.77 - 45.57)



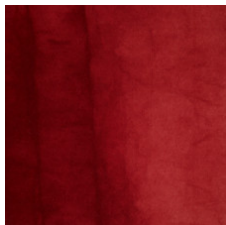
Lac 41762
LRV 3.5 (range 2.8 - 4.2) | L* 21.9 (range 19.27 - 24.34)



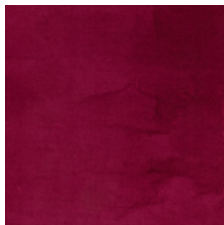
Brazil Wood 41855
LRV 2.8 (range 2.1 - 3.3) | L* 19.24 (range 16.02 - 21.26)



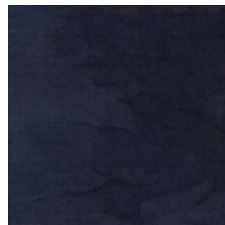
Madder Root 41864
LRV 7.7 (range 5.1 - 9.3) | L* 32.84 (range 26.92 - 36.47)



Cochineal 41880
LRV 4.9 (range 3.3 - 6.6) | L* 26.01 (range 21.03 - 30.80)



Beet 41890
LRV 5.3 (range 4.8 - 6) | L* 27.43 (range 26.18 - 29.45)



Iris 41965
LRV 3.8 (range 2.7 - 4.8) | L* 22.71 (range 18.91 - 26.17)

追加情報

* To learn more about the recyclability of our products and our re[TURN], please visit shawcontract.com/sustainability.

**Meets or exceeds all local and national regulations in country of manufacture.

***This carpet is manufactured to be ADA compliant, but to be fully ADA compliant, the end-user must ensure the carpet is adhered to the floor and installed as outlined in the ADA standards.

[Installation Guidelines](#)

[Maintenance Guidelines](#)

Specifications are subject to nominal manufacturing variance. Material supply and/or manufacturing processes may necessitate changes without notice.

This product is an exclusive design and may not be duplicated in any manner. Use of this design in the creation of another product design is also strictly prohibited.

Visit shawcontract.com/testing for more information.



Declare.



PVC-Free

Corporate Headquarters +1 800 257 7429 | +1 706 532 7984 | Atlanta +1 404 853 7429 | Bengaluru +91 80 6773 0202 | Beijing +86 10 6568 588 | Chicago +1 312 467 1331 | Dubai +971 4 584 6956 | Hong Kong +852 2623 0371 | London +44 207 961 4120 | Los Angeles +1 800 233 1614 | Melbourne +61 3 9939 8543 | Mexico City +55 5010 7600 | Mumbai +91 22 6284 5050 | Nantong +86 400 800 7429 | New York +1 212 953 7429 | Paris +33 (0) 1 81 22 44 39 | San Francisco +1 415 955 1920 | Shanghai +86 21 3338 4000 | Singapore +65 6733 1811 | Sydney +61 800 556 302

© 2025 Shaw Industries Group, Inc., a Berkshire Hathaway Company
July 3, 2025

4 of 4