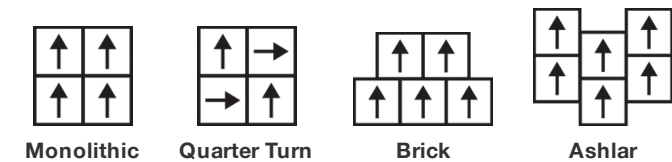


Dye Lab Tile

製品型	Carpet Tile	
コレクション	Dye Lab	
スタイルナンバー	5T041	
建設	カットパイル	
ファイバ	Ecosolution Q100™ Nylon	
一次バックイング	合成	
二次バックイング	Ecoworx®タイル	
保護治療	SSP®shaw 土壌保護保証	
推奨接着剤	LokDots, 3000 Carpet Tile 1 Gallon, 4151 Multi-Use Carpet Tile 4 Gallon, 5000 Carpet Tile 1 Gallon, LokWorx Adhesive Tabs, 3800 Indoor Outdoor Carpet Tile 4 Gallon, 5000 Carpet Tile 4 Gallon or 3000 Carpet Tile 4 Gallon	
	u.s.	metric
商品のサイズ	24 in x 24 in	61 cm x 61 cm
ボックスあたりの面積	48 ft²	4.46 m²
ボックスあたりの個数	12 pcs	
ゲージ	1/10 in	39.4 per 10 cm
ステッチ	10.5 per in	42.5 per 10 cm
完成した杭の厚さ	0.175 in	4.45 mm
平均密度	7406 oz/yd³	0.274 g/cm³
キロテックス		10.11
総厚	0.330 in	8.38 mm
房状の重量	36 oz/yd²	1220.6 g/m²



推奨インストール方法



データ + テスト

放射パネル (astm E648)	Class I
Nbs煙	Less Than 450
静電気の傾向	Less Than 3.5 kv
Cri Green Label Plus (glp)	GLP5563
錠剤テスト	Pass*
Adaコンプライアンス	>0.6、ADA 歩行面およびアクセス可能ルート用推奨静摩擦係数の基準に合致***
Test Reports may be included or listed by the manufacturing/inventory style number as opposed to the noted selling style number.	

保証

生涯商用限定保証

属性+認定

Certifications Below Apply Exclusively To The Carpet Tile Rug Itself And Not The Lokworx Tabs Adhesive

Health & Wellbeing

Material Ingredient Transparency

Cradle to Cradle Certified® | Silver Level (Version 4.0)  
Health Product Declaration (HPD) | 1,000 ppm 開示  
Living Building Challenge (LBC) | レッドリスト記載化学物質無配合  
Declare | LBC 準拠  
NSF 140 | ゴールド  
CRI Green Label Plus (GLP) | GLP5563

Indoor Air Quality

Climate Impact

Environmental Product Declaration (EPD)

ISO14044、ISO14025 および EN15804 に基づく 第三者認証取得

Embodied Carbon (Cradle to Gate)

4.07 kg CO<sub>2</sub>/m<sup>2</sup>

Life-Cycle Carbon Emissions

Carbon Neutral

Total Recycled Content

64% (Pre-Consumer 64% | Post-Consumer 0%)

Product Packaging

100% リサイクル可能

Global Product Assessment

Singapore Green Label | 認証取得  
CE Marking (EN 14041) | 第三者認証取得  
Environmental Guarantee\* | Re[turn] Reclamation Program\* | Through Our Environmental Guarantee, Shaw Pledges to Transport And Recycle Any Ecoworx Carpet.  
Country of Origin\*\* | Imported

グリーンリード貢献クレジット

MRクレジット：製品の開示と最適化の構築  
環境製品宣言-オプション1：環境製品宣言 (EPD)

3rd Party Certified in Accordance with ISO14044, ISO14025 & EN15804

MRクレジット：製品の開示と最適化の構築  
材料成分-オプション1：材料成分レポート

HPD (Version 2.1) or C2C Silver Level (Version 4.0)

MRクレジット：製品の開示と最適化の構築  
材料成分-オプション2：材料成分の最適化

C2C Silver Level (Version 4.0)

MR Credit: Building Product Disclosure and Optimization  
Sourcing of Raw Materials - Option 2: Leadership Extraction Practices

Environmental Guarantee: Re[turn] Reclamation Program\* | Through Our Environmental Guarantee, Shaw Pledges to Transport And Recycle Any Ecoworx Carpet.

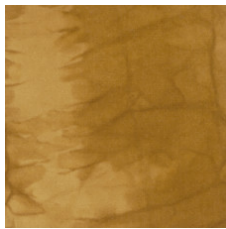
EQクレジット：低排出材料  
オプション1：製品カテゴリの計算

Green Label Plus Certification: GLP5563

MR Credit: Interiors Life-Cycle Impact Reduction  
Option 3: Design for Flexibility

Ecoworx Tile with Lokdots Installation System

## Available Colorways



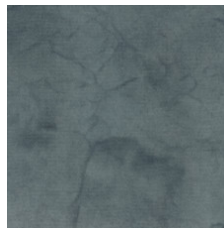
Osage Orange 41202  
LRV 17.2 (range 12.4 - 21.5) | L\* 48.19 (range 41.91 - 53.48)



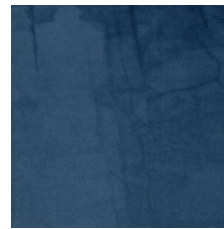
Fustic Wood 41316  
LRV 3 (range 2.8 - 3.2) | L\* 20.05 (range 19.23 - 20.89)



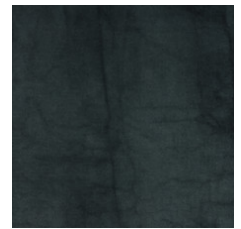
Fustic Saxon 41396  
LRV 8.8 (range 6.6 - 10.4) | L\* 35.41 (range 30.89 - 38.56)



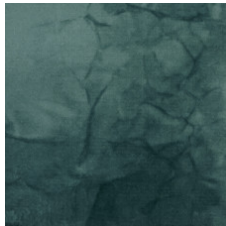
Black Walnut 41402  
LRV 12.7 (range 11.6 - 14.6) | L\* 42.16 (range 40.6 - 45.04)



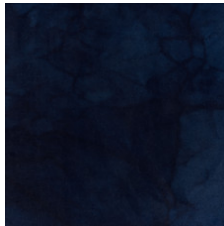
Saxon 41462  
LRV 5.7 (range 3.8 - 7.6) | L\* 28.32 (range 23.11 - 33.17)



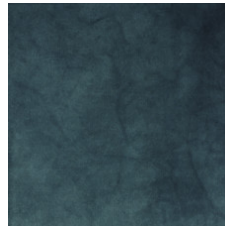
Cornflower 41480  
LRV 4.8 (range 3.1 - 6.3) | L\* 25.8 (range 20.36 - 30.10)



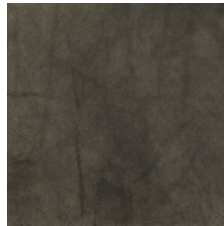
Knotweed 41491  
LRV 12.0 (range 10.6 - 12.8) | L\* 41.2 (range 38.9 - 42.43)



Indigo 41496  
LRV 2.9 (range 2.1 - 3.7) | L\* 19.6 (range 16.14 - 22.66)



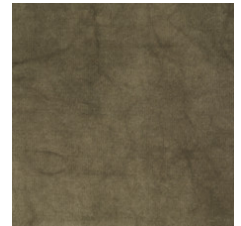
Woad 41497  
LRV 4.0 (range 2.6 - 5.5) | L\* 23.4 (range 18.20 - 27.99)



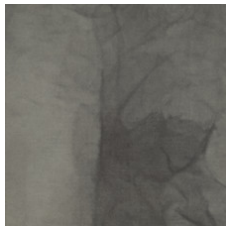
Sumac 41504  
LRV 9.2 (range 6.4 - 11.8) | L\* 36.1 (range 30.43 - 40.92)



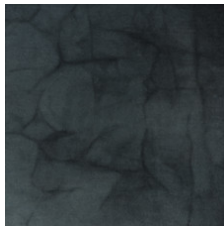
Logwood 41505  
LRV 3.1 (range 2.2 - 4.3) | L\* 20.4 (range 16.71 - 24.62)



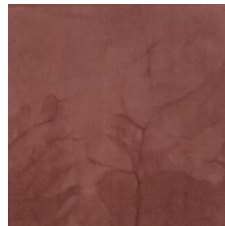
Black Tea 41516  
LRV 10.1 (range 8.8 - 11.9) | L\* 38.0 (range 35.55 - 41.09)



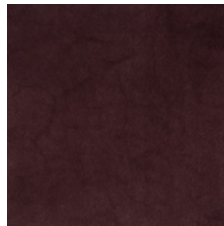
Henna 41535  
LRV 12.6 (range 10.7 - 13.8) | L\* 42.09 (range 39 - 43.97)



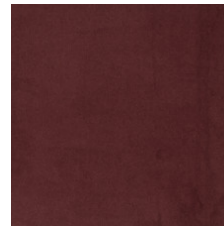
Iron 41580  
LRV 6.8 (range 4.7 - 8.4) | L\* 31.12 (range 25.83 - 34.8)



Sandalwood 41665  
LRV 13.2 (range 11.7 - 15) | L\* 42.99 (range 40.77 - 45.57)



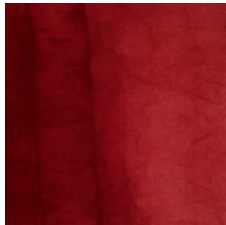
Lac 41762  
LRV 3.5 (range 2.8 - 4.2) | L\* 21.9 (range 19.27 - 24.34)



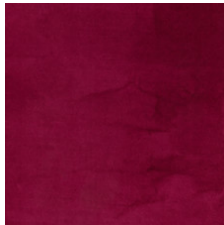
Brazil Wood 41855  
LRV 2.8 (range 2.1 - 3.3) | L\* 19.24 (range 16.02 - 21.26)



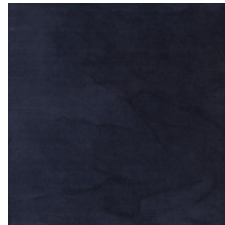
Madder Root 41864  
LRV 7.7 (range 5.1 - 9.3) | L\* 32.84 (range 26.92 - 36.47)



Cochineal 41880  
LRV 4.9 (range 3.3 - 6.6) | L\* 26.01 (range 21.03 - 30.80)



Beet 41890  
LRV 5.3 (range 4.8 - 6) | L\* 27.43 (range 26.18 - 29.45)



Iris 41965  
LRV 3.8 (range 2.7 - 4.8) | L\* 22.71 (range 18.91 - 26.17)

## 追加情報

\* To learn more about the recyclability of our products and our re[TURN], please visit [shawcontract.com/sustainability](https://shawcontract.com/sustainability).

\*\*Meets or exceeds all local and national regulations in country of manufacture.

\*\*\*This carpet is manufactured to be ADA compliant, but to be fully ADA compliant, the end-user must ensure the carpet is adhered to the floor and installed as outlined in the ADA standards.

[Installation Guidelines](#)

[Maintenance Guidelines](#)

Specifications are subject to nominal manufacturing variance. Material supply and/or manufacturing processes may necessitate changes without notice.

This product is an exclusive design and may not be duplicated in any manner. Use of this design in the creation of another product design is also strictly prohibited.

Visit [shawcontract.com/testing](https://shawcontract.com/testing) for more information.



PVC-Free

Corporate Headquarters +1 800 257 7429 | +1 706 532 7984 | Atlanta +1 404 853 7429 | Bengaluru +91 80 6773 0202 | Beijing +86 10 6568 588 | Chicago +1 312 467 1331 | Dubai +971 4 584 6956 | Hong Kong +852 2623 0371 | Latin America (Miami) +1 305 827 5912 | London +44 207 961 4120 | Los Angeles +1 800 233 1614 | Melbourne +61 3 9939 8543 | Mexico City +55 5010 7600 | Mumbai +91 22 6284 5050 | Nantong +86 400 800 7429 | New York +1 212 953 7429 | Paris +33 (0) 1 81 22 44 39 | San Francisco +1 415 955 1920 | Santiago +562 2431 5000 x 550 | São Paulo +55 11 3071 1702 | Shanghai +86 21 3338 4000 | Singapore +65 6733 1811 | Sydney +61 800 556 302