



Dye Lab Tile

Stijlnummer	5T041	
Collectie	Dye Lab	
Producttype	Tapijttegel	
Construction	Standard	Data + Performance
Type Fabricage	ISO 2424	tufted 1/10"   39.4 per 10cm
Uitzicht	ISO 2424	Gesneden Pool
Productformaat	EN 994	61 cm x 61 cm   24 in x 24 in
Vezel	ISO 2424	Ecosolution Q® Polyamide 6
Totale Dikte	ISO 1765	8.1 mm
Afgewerkte Pooldikte	ISO 1766	5.2 mm
Totale Massa	ISO 8543	3483 g/m²
Getuft Gewicht	ISO 2424	1221 g/m²
Effectieve Poolmassa	ISO 8543	840 g/m²
Pooldichtheid	ISO 8543	0.162 g/cm³

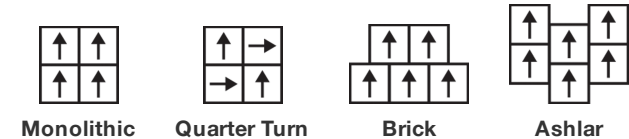


Gegevens

Steken	ISO 1763	169,000/m²   43 per 10cm
Beschermende Behandelingen		SSP® Shaw Grondbescherming
Elektrostatische Weerstand	ISO 6356	≤ 2.0 kv (Stroll Test)
Gebruik Classificatie	EN 1307	33 Commercial Heavy
Luxeklasse	EN 1307	LC4
Dimensionale Stabiliteit	EN 986	≤ 0.2%
Contactgeluidsisolatie	ISO 10140	27 Db
Geluidsabsorptieclassificatie	ISO 354/11654	0.20 Aw   Class E
Warmteweerstand m² K/w	ISO 8302	0.090 M² K/W Tog 0.90
Weerstand Tegen Droog Uitglijden	ISO 13893	Pass/No Pulled Loops
Kleurvastheid Voor Licht	ISO 105-B02	>6
Ontvlambaarheid	EN 13501-1	Cfl-S1 (Adhered Testing)
Stoel Met Wieltjes	EN 985	≥2.4 Continuous Use

[Levenslang Commercieel Beperkt](#) subject to installation in full accordance with the manufacturer's instructions and a regular effective cleaning and maintenance programme. Second location warranties are available with the use of non-adhesive IOBAC Magtabs and Tabit accessories.

Aanbevolen Installatiemethode



27 dB

13

EU.DOP/2895/CPR/1013/0116/T  
OOSTERHOUT SHOWROOM, VAARTWEG 10, 4906  
BL NETHERLANDS (NLD)  
Notified Body 2895

22

UK.DOP/0338/CPR/1013/0116/T  
SHAW EUROPE LIMITED BLACKADDIE RD,  
SANQUHAR DG4 6DB, UNITED KINGDOM  
Approved Body 0338

EN14041:2004/AC:2006

## Kenmerken + Certificeringen

Certifications Below Apply Exclusively To The Carpet Tile Rug Itself And Not The Lokworx Tabs Adhesive

Declaration of Performance

Cradle to Cradle gecertificeerd™

Health Product Declaration (HPD)

Environmental Product Declaration (EPD)

Living Building Challenge (LBC)

Verklaar

nsf 140

Building Research Establishment (BRE)

Singapore Green Label

milieugarantie

productverpakking

land van herkomst

BREEAM Contribution Credit

**EU.DOP/2895/CPR/1013/0116/T**

**Silver Level (Version 4.0)**

**1,000 ppm (Parts Per Million) Disclosure**

**3de Partij Gecertificeerd in Overeenstemming Met ISO14044, ISO14025 & EN15804**

**Vrij Van Chemische Producten Die Op De Rode Lijst Staan**

**Voldoet Aan LBC**

**Goud**

**A Offices/A+ Retail 0.433/0.583 Ecopoints**

**Gecertificeerd**

**Re[turn] Reclamation Program\* | Through Our Environmental Guarantee, Shaw Pledges to Transport And Recycle Any Ecoworx Carpet.**

**100% Recycleerbaar**

**Verenigde Staten**

**Certificate of Approval**

**Schools/Offices/Health/Industrial Shed**

**Retail**

## Well V2 Contribution Credit

X08 Reductie gevaarlijke stoffen Deel 1: Beperking Optimalisatie Gevaarlijke Materialen - 1 pt

**C2C Silver Level (Version 4.0)**

X10 Reductie van vluchtige stoffen Deel 1 (A): Beheer Vluchtige Organische Stoffen (VOS) Optimalisatie - 1 pt

**C2C Silver Level (Version 4.0)**

X11 Langetermijn-emissiebeheersing - deel 2: Optimalisering van vloeren - 1 pt

**Green Label Plus Certification: GLP5563**

X13 Verbeterde materiaalvoorzorgsmaatregelen Deel 1: Optimaliseren van materiaalkeuze - max 2 punten

**C2C Silver Level (Version 4.0)**

X14 Transparantie van materialen Deel 1: Optimalisatie: Bevorderen van ingrediëntenopenbaarmaking - max 2 punten

**C2C Silver Level (Version 4.0)**

## Groen Leed Bijdragekrediet

"MR-krediet: openbaarmaking en optimalisering van bouwproducten Milieuproductverklaringen - Optie 1: Milieuproductverklaring (EPD)"

**3rd Party Certified in Accordance with ISO14044, ISO14025 & EN15804**

"MR-krediet: Openbaarmaking en optimalisering van bouwproducten MateriaalIngrediënten - Optie 1: Rapportage materiaalIngrediënten"

**HPD (Version 2.1) or C2C Silver Level (Version 4.0)**

"MR-krediet: openbaarmaking en optimalisering van bouwproducten MateriaalIngrediënten - Optie 2: Optimalisering van materiaalIngrediënten"

**C2C Silver Level (Version 4.0)**

"MR-krediet: openbaarmaking en optimalisering van bouwproducten Herkomst van grondstoffen - Optie 2: Leidende winningspraktijken"

**Environmental Guarantee: Re[turn] Reclamation Program\* | Through Our Environmental Guarantee, Shaw Pledges to Transport And Recycle Any Ecoworx® Carpet.**

**Green Label Plus Certification: GLP5563**

"EQ-krediet: materialen met lage emissie Optie 1: Berekeningen per productcategorie"

**Ecworx® Tile with Lokdots Installation System**

MR Credit: Interiors Life-Cycle Impact Reduction  
Option 3: Design for Flexibility

## Memberships

WGBC Framework

UKGBC

Emirates Green Building Council

Chemsec

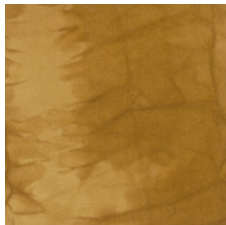
WGBC Framework

UKGBC

Emirates Green Building Council

Chemsec

## Lichtreflectiewaarde



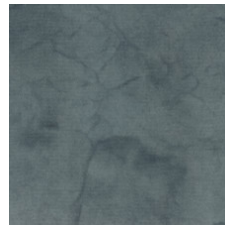
Osage Orange 41202  
LRV 17.2 (range 12.4 - 21.5) | L\* 48.19 (range 41.91 - 53.48)



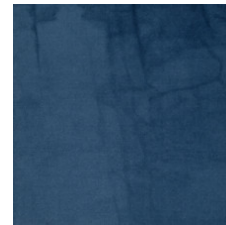
Fustic Wood 41316  
LRV 3 (range 2.8 - 3.2) | L\* 20.05 (range 19.23 - 20.89)



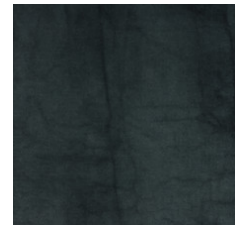
Fustic Saxon 41396  
LRV 8.8 (range 6.6 - 10.4) | L\* 35.41 (range 30.89 - 38.56)



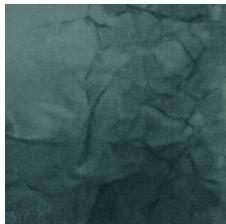
Black Walnut 41402  
LRV 12.7 (range 11.6 - 14.6) | L\* 42.16 (range 40.6 - 45.04)



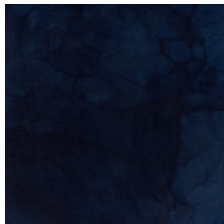
Saxon 41462  
LRV 5.7 (range 3.8 - 7.6) | L\* 28.32 (range 23.11 - 33.17)



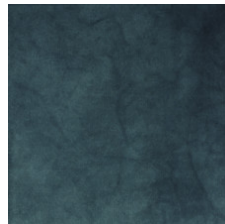
Cornflower 41480  
LRV 4.8 (range 3.1 - 6.3) | L\* 25.8 (range 20.36 - 30.10)



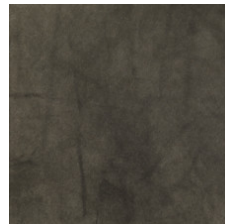
Knotweed 41491  
LRV 12.0 (range 10.6 - 12.8) | L\* 41.2 (range 38.9 - 42.43)



Indigo 41496  
LRV 2.9 (range 2.1 - 3.7) | L\* 19.6 (range 16.14 - 22.66)



Woad 41497  
LRV 4.0 (range 2.6 - 5.5) | L\* 23.4 (range 18.20 - 27.99)



Sumac 41504  
LRV 9.2 (range 6.4 - 11.8) | L\* 36.1 (range 30.43 - 40.92)



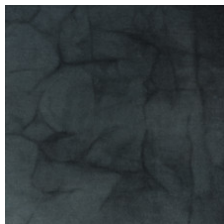
Logwood 41505  
LRV 3.1 (range 2.2 - 4.3) | L\* 20.4 (range 16.71 - 24.62)



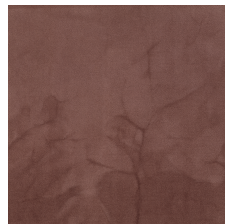
Black Tea 41516  
LRV 10.1 (range 8.8 - 11.9) | L\* 38.0 (range 35.55 - 41.09)



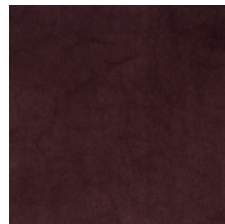
Henna 41535  
LRV 12.6 (range 10.7 - 13.8) | L\* 42.09 (range 39 - 43.97)



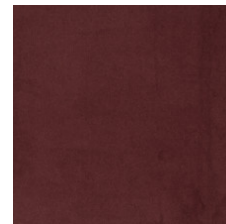
Iron 41580  
LRV 6.8 (range 4.7 - 8.4) | L\* 31.12 (range 25.83 - 34.8)



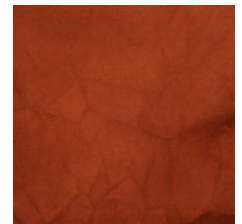
Sandalwood 41665  
LRV 13.2 (range 11.7 - 15) | L\* 42.99 (range 40.77 - 45.57)



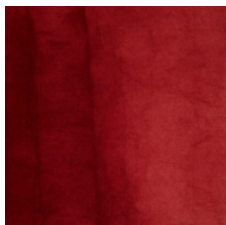
Lac 41762  
LRV 3.5 (range 2.8 - 4.2) | L\* 21.9 (range 19.27 - 24.34)



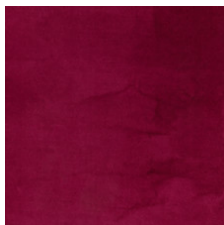
Brazil Wood 41855  
LRV 2.8 (range 2.1 - 3.3) | L\* 19.24 (range 16.02 - 21.26)



Madder Root 41864  
LRV 7.7 (range 5.1 - 9.3) | L\* 32.84 (range 26.92 - 36.47)



Cochineal 41880  
LRV 4.9 (range 3.3 - 6.6) | L\* 26.01 (range 21.03 - 30.80)



Beet 41890  
LRV 5.3 (range 4.8 - 6) | L\* 27.43 (range 26.18 - 29.45)



Iris 41965  
LRV 3.8 (range 2.7 - 4.8) | L\* 22.71 (range 18.91 - 26.17)

## Aanvullende Informatie

\* To learn more about the recyclability of our products and our re[TURN], please visit [shawcontract.com/sustainability](https://shawcontract.com/sustainability).

\*\*Meets or exceeds all local and national regulations in country of manufacture.

\*\*\*This carpet is manufactured to be ADA compliant, but to be fully ADA compliant, the end-user must ensure the carpet is adhered to the floor and installed as outlined in the ADA standards.

[Installation Guidelines](#)

[Maintenance Guidelines](#)

[levenslang commercieel beperkt](#)

Specifications are subject to nominal manufacturing variance. Material supply and/or manufacturing processes may necessitate changes without notice.

This product is an exclusive design and may not be duplicated in any manner. Use of this design in the creation of another product design is also strictly prohibited.

Visit [shawcontract.com/testing](https://shawcontract.com/testing) for more information.



**PVC-Free**

Corporate Headquarters +1 800 257 7429 | +1 706 532 7984 | Atlanta +1 404 853 7429 | Bengaluru +91 80 6773 0202 | Beijing +86 10 6568 588 | Chicago +1 312 467 1331 | Dubai +971 4 584 6956 | Hong Kong +852 2623 0371 | London +44 207 961 4120 | Los Angeles +1 800 233 1614 | Melbourne +61 3 9939 8543 | Mexico City +55 5010 7600 | Mumbai +91 22 6284 5050 | Nantong +86 400 800 7429 | New York +1 212 953 7429 | Paris +33 (0) 1 81 22 44 39 | San Francisco +1 415 955 1920 | Shanghai +86 21 3338 4000 | Singapore +65 6733 1811 | Sydney +61 800 556 302

© 2025 Shaw Industries Group, Inc., a Berkshire Hathaway Company  
June 21, 2025

4 of 4