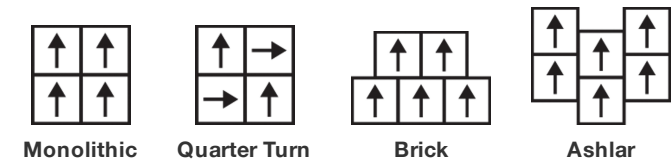


Dye Lab Tile

Tipo De Produto	Carpete Em Placas	
Coleção	Dye Lab	
Número Do Produto	5T041	
Construção	Pelo Cortado	
Base Primária	Sintético	
Base Secundária	Base Ecoworx®	
Tratamentos De Proteção	SSP® Shaw Proteção Anti-Manchas	
Adesivo Recomendado	LokDots, 3000 Carpet Tile 4 Gallon, 3000 Carpet Tile 1 Gallon, 4151 Multi-Use Carpet Tile 4 Gallon, 5000 Carpet Tile 1 Gallon, LokWorx Adhesive Tabs, 3800 Indoor Outdoor Carpet Tile 4 Gallon or 5000 Carpet Tile 4 Gallon	
	u.s.	metric
Tamanho Do Produto	24 in x 24 in	61 cm x 61 cm
Área Por Caixa	48 ft²	4.46 m²
Peças Por Caixa	12 pcs	
Calibre	1/10 in	39.4 per 10 cm
Pontos	10.5 per in	42.5 per 10 cm
Espessura Da Fibra Acabada	0.175 in	4.45 mm
Densidade Média	7406 oz/yd³	0.274 g/cm³
Kilotex		10.11
Espessura Total	0.330 in	8.38 mm
Peso Da Fibra	36 oz/yd²	1220.6 g/m²



Método De Instalação Recomendado



Dados + Teste

Painel Radiante (Astm E648)	<b>Class I</b>
Nbs Fumaça	<b>Less Than 450</b>
Propensão Eletrostática	<b>Less Than 3.5 kv</b>
Cri Green Label Plus (Bpl)	<b>GLP5563</b>
Teste De Ignição (Pill)	<b>Pass*</b>
Ada Compliance	<b>≥0.6, Atende as recomendações do coeficiente de fricção estático para as superfícies caminháveis ADA e rotas acessíveis***</b>
Test Reports may be included or listed by the manufacturing/inventory style number as opposed to the noted selling style number.	

Garantias

Garantia Comercial Vitalícia Limitada

Atributos + Certificações

Certifications Below Apply Exclusively To The Carpet Tile Rug Itself And Not The Lokworx Tabs Adhesive

Health & Wellbeing

Material Ingredient Transparency

Cradle to Cradle Certified® | Silver Level (Version 4.0)  
Health Product Declaration (HPD) | Divulgado 1,000 ppm  
Living Building Challenge (LBC) | Livre De Químicos Do Red List  
Declare | Compatível LBC  
NSF 140 | Ouro  
CRI Green Label Plus (GLP) | GLP5563

Indoor Air Quality

Climate Impact

Environmental Product Declaration (EPD)

Product Packaging

3rd Party Certified De Acordo Com ISO14044, ISO14025 & EN15804  
100% Reciclável

Global Product Assessment

Singapore Green Label | Certificado  
CE Marking (EN 14041) | Certificado 3rd Party  
Environmental Guarantee\* | Re[turn] Reclamation Program\* | Through  
Our Environmental Guarantee, Shaw Pledges to Transport And  
Recycle Any Ecoworx Carpet.  
Country of Origin\*\* | Imported

Well V2 Contribution Credit

X08 Hazardous Material Reduction Part 1: Limit Hazardous Materials Optimization – 1 pt  
X10 Volatile Compound Reduction Part 1 (A): Manage Volatile Organic Compounds (VOCs) Optimization – 1 pt  
X11 Long Term Emissions Control Part 2: Flooring Optimization – 1 pt  
X13 Enhanced Material Precaution Part 1: Select Optimized Materials Optimization – max 2 pts  
X14 Material Transparency Part 1: Promote Ingredient Disclosure Optimization – max 2 pts

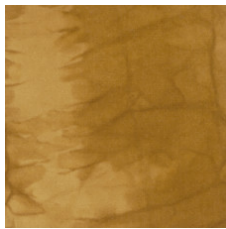
C2C Silver Level (Version 4.0)  
  
C2C Silver Level (Version 4.0)  
  
Certificação Green Label Plus: GLP5563  
C2C Silver Level (Version 4.0)  
  
C2C Silver Level (Version 4.0)

Crédito De Contribuição

MR Credit: Divulgação e otimização de produtos de construção Declarações ambientais do produto - Opção 1: Declaração ambiental do produto (EPD)  
MR Credit: Divulgação e otimização de produtos de construção Ingredientes materiais - Opção 1: Relatório de ingredientes materiais  
MR Credit: Divulgação e otimização de produtos de construção Ingredientes do material - Opção 2: Otimização do ingrediente do material  
MR Credit: Divulgação e otimização de produtos de construção Fornecimento de matérias-primas - Opção 2: Práticas de extração de liderança  
Crédito de EQ: Materiais de baixa emissão Opção 1: cálculos de categoria de produto  
MR Credit: Interiors Life-Cycle Impact Reduction Option 3: Design for Flexibility

3rd Party Certified in Accordance with ISO14044, ISO14025 & EN15804  
  
HPD (Version 2.1) or C2C Silver Level (Version 4.0)  
  
C2C Silver Level (Version 4.0)  
  
Environmental Guarantee: Re[turn] Reclamation Program\* | Through  
Our Environmental Guarantee, Shaw Pledges to Transport And  
Recycle Any Ecoworx® Carpet.  
Certificação Green Label Plus: GLP5563  
  
Ecoworx® Tile with Lokdots Installation System

## Available Colorways



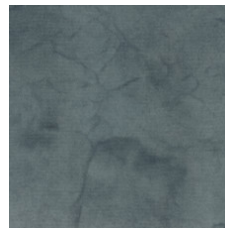
Osage Orange 41202  
LRV 17.2 (range 12.4 - 21.5) | L\* 48.19 (range 41.91 - 53.48)



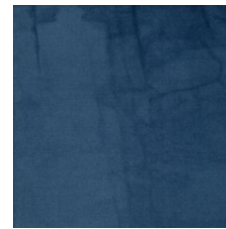
Fustic Wood 41316  
LRV 3 (range 2.8 - 3.2) | L\* 20.05 (range 19.23 - 20.89)



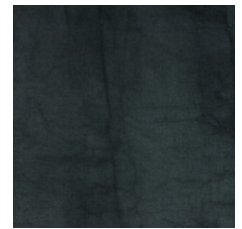
Fustic Saxon 41396  
LRV 8.8 (range 6.6 - 10.4) | L\* 35.41 (range 30.89 - 38.56)



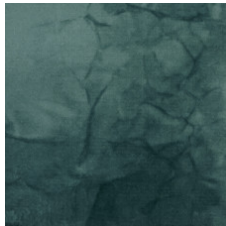
Black Walnut 41402  
LRV 12.7 (range 11.6 - 14.6) | L\* 42.16 (range 40.6 - 45.04)



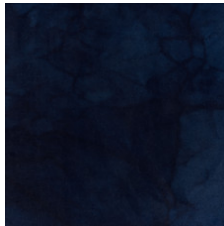
Saxon 41462  
LRV 5.7 (range 3.8 - 7.6) | L\* 28.32 (range 23.11 - 33.17)



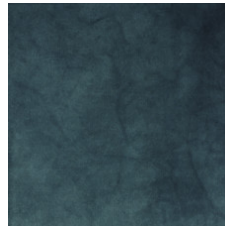
Cornflower 41480  
LRV 4.8 (range 3.1 - 6.3) | L\* 25.8 (range 20.36 - 30.10)



Knotweed 41491  
LRV 12.0 (range 10.6 - 12.8) | L\* 41.2 (range 38.9 - 42.43)



Indigo 41496  
LRV 2.9 (range 2.1 - 3.7) | L\* 19.6 (range 16.14 - 22.66)



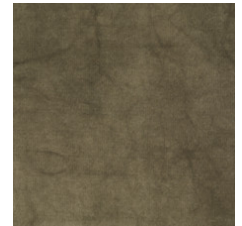
Woad 41497  
LRV 4.0 (range 2.6 - 5.5) | L\* 23.4 (range 18.20 - 27.99)



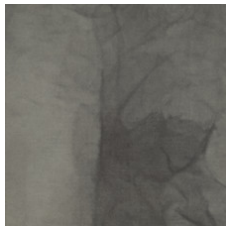
Sumac 41504  
LRV 9.2 (range 6.4 - 11.8) | L\* 36.1 (range 30.43 - 40.92)



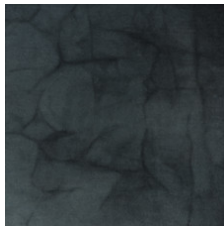
Logwood 41505  
LRV 3.1 (range 2.2 - 4.3) | L\* 20.4 (range 16.71 - 24.62)



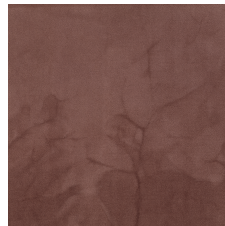
Black Tea 41516  
LRV 10.1 (range 8.8 - 11.9) | L\* 38.0 (range 35.55 - 41.09)



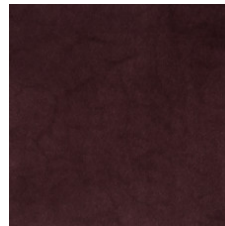
Henna 41535  
LRV 12.6 (range 10.7 - 13.8) | L\* 42.09 (range 39 - 43.97)



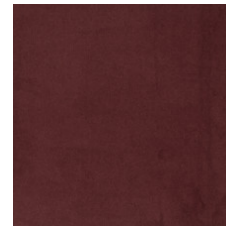
Iron 41580  
LRV 6.8 (range 4.7 - 8.4) | L\* 31.12 (range 25.83 - 34.8)



Sandalwood 41665  
LRV 13.2 (range 11.7 - 15) | L\* 42.99 (range 40.77 - 45.57)



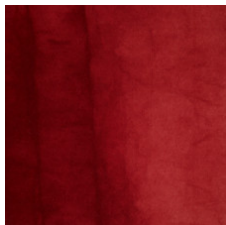
Lac 41762  
LRV 3.5 (range 2.8 - 4.2) | L\* 21.9 (range 19.27 - 24.34)



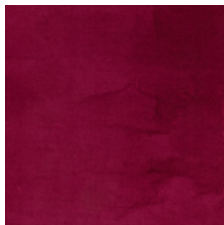
Brazil Wood 41855  
LRV 2.8 (range 2.1 - 3.3) | L\* 19.24 (range 16.02 - 21.26)



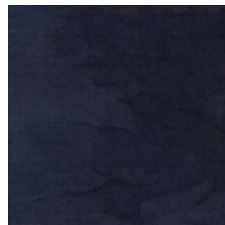
Madder Root 41864  
LRV 7.7 (range 5.1 - 9.3) | L\* 32.84 (range 26.92 - 36.47)



Cochineal 41880  
LRV 4.9 (range 3.3 - 6.6) | L\* 26.01 (range 21.03 - 30.80)



Beet 41890  
LRV 5.3 (range 4.8 - 6) | L\* 27.43 (range 26.18 - 29.45)



Iris 41965  
LRV 3.8 (range 2.7 - 4.8) | L\* 22.71 (range 18.91 - 26.17)

## Informação Adicional

\* To learn more about the recyclability of our products and our re[TURN], please visit [shawcontract.com/sustainability](https://shawcontract.com/sustainability).

\*\*Meets or exceeds all local and national regulations in country of manufacture.

\*\*\*This carpet is manufactured to be ADA compliant, but to be fully ADA compliant, the end-user must ensure the carpet is adhered to the floor and installed as outlined in the ADA standards.

[Installation Guidelines](#)

[Maintenance Guidelines](#)

Specifications are subject to nominal manufacturing variance. Material supply and/or manufacturing processes may necessitate changes without notice.

This product is an exclusive design and may not be duplicated in any manner. Use of this design in the creation of another product design is also strictly prohibited.

Visit [shawcontract.com/testing](https://shawcontract.com/testing) for more information.



**Declare.**



**PVC-Free**

Corporate Headquarters +1 800 257 7429 | +1 706 532 7984 | Atlanta +1 404 853 7429 | Bengaluru +91 80 6773 0202 | Beijing +86 10 6568 588 | Chicago +1 312 467 1331 | Dubai +971 4 584 6956 | Hong Kong +852 2623 0371 | London +44 207 961 4120 | Los Angeles +1 800 233 1614 | Melbourne +61 3 9939 8543 | Mexico City +55 5010 7600 | Mumbai +91 22 6284 5050 | Nantong +86 400 800 7429 | New York +1 212 953 7429 | Paris +33 (0) 1 81 22 44 39 | San Francisco +1 415 955 1920 | Shanghai +86 21 3338 4000 | Singapore +65 6733 1811 | Sydney +61 800 556 302

© 2025 Shaw Industries Group, Inc., a Berkshire Hathaway Company  
July 1, 2025

4 of 4