

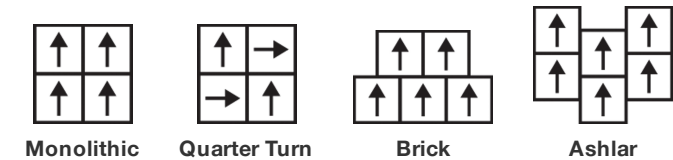
Artisan Tile

상품 유형	Carpet Tile
수집	Design Journey
스타일 번호	5T097
구성	다중 레벨 패턴/커트루프식
섬유	Ecosolution Q100™ Nylon
기본 백업	합성
보조 백업	Ecoworx® 타일
보호 처리	SSP® Shaw 흠먼지 보호
권장 접착제	LokDots, 3000 Carpet Tile 1 Gallon, 4151 Multi-Use Carpet Tile 4 Gallon, 5000 Carpet Tile 1 Gallon, LokWorx Adhesive Tabs, 3800 Indoor Outdoor Carpet Tile 4 Gallon, 5000 Carpet Tile 4 Gallon or 3000 Carpet Tile 4 Gallon

	u.s.	metric
제품 크기	24 in x 24 in	61 cm x 61 cm
상자 당 면적	48 ft²	4.46 m²
상자 당 조각	12 pcs	
계량기	1/10 in	39.4 per 10 cm
스티치	9.5 per in	38.5 per 10 cm
완성 된 말뚝 두께	0.110 in	2.79 mm
평균 밀도	12436 oz/yd³	0.46 g/cm³
킬로 텍스		9.19
총 두께	0.311 in	7.9 mm
슬을다는 무게	38 oz/yd²	1288.4 g/m²



권장 설치 방법



데이터 + 테스트

복사 패널 (Astm E648)	Class I
Nbs 연기	Less Than 450
정전기 성향	Less Than 3.5 kv
Cri 그린 라벨 플러스 (Glp)	GLP5563
알약 테스트	Pass*
Ada 준수	0.6 이상, ADA 보행 노면과 이용 가능한 경로의 권장 마찰계수 충족***

Test Reports may be included or listed by the manufacturing/inventory style number as opposed to the noted selling style number.

보증

중신 상용 제한

코디네이팅 제품

Carpet Tile: **Plain Weave Tile, Chok Tile**  
Broadloom: **Artisan Loom, Chok Loom**

속성 + 인증

Certifications Below Apply Exclusively To The Carpet Tile Rug Itself And Not The Lokworx Tabs Adhesive

Health & Wellbeing

Material Ingredient Transparency

**Cradle to Cradle Certified® | Silver Level (Version 4.0)**  
**Health Product Declaration (HPD) | 1,000ppm 노출**  
**Living Building Challenge (LBC) | 적색목록 화학물질 없음**  
**Declare | LBC 규격**  
**NSF 140 | 골드**  
**CRI Green Label Plus (GLP) | GLP5563**

Indoor Air Quality

Climate Impact

Environmental Product Declaration (EPD)  
Embodied Carbon (Cradle to Gate)  
Life-Cycle Carbon Emissions  
Total Recycled Content  
Product Packaging

**ISO14044, ISO14025 및 EN15804에 따라 타사 인증 획득**  
**4.11 kg CO<sub>2</sub>/m<sup>2</sup>**  
**Carbon Neutral**  
**64% (Pre-Consumer 64% | Post-Consumer 0%)**  
**100% 재활용 가능**

Global Product Assessment

**Singapore Green Label | 인증**  
**CE Marking (EN 14041) | 타사 인증 획득**  
**Environmental Guarantee\* | Re[turn] Reclamation Program\* | Through Our Environmental Guarantee, Shaw Pledges to Transport And Recycle Any Ecoworx Carpet.**  
**Country of Origin\*\* | Imported**

Well V2 Contribution Credit

X08 Hazardous Material Reduction Part 1: Limit Hazardous Materials Optimization – 1 pt  
X10 Volatile Compound Reduction Part 1 (A): Manage Volatile Organic Compounds (VOCs) Optimization – 1 pt  
X11 Long Term Emissions Control Part 2: Flooring Optimization – 1 pt  
X13 Enhanced Material Precaution Part 1: Select Optimized Materials Optimization – max 2 pts  
X14 Material Transparency Part 1: Promote Ingredient Disclosure Optimization – max 2 pts

**C2C Silver Level (Version 4.0)**  
**C2C Silver Level (Version 4.0)**  
**Green Label Plus 인증: GLP5563**  
**C2C Silver Level (Version 4.0)**  
**C2C Silver Level (Version 4.0)**

## 녹색의 공헌 기여 크레딧

MR 크레딧 : 제품 공개 및 최적화 구축  
환경 제품 선언-옵션 1 : 환경 제품 선언 (EPD)

MR 크레딧 : 제품 공개 및 최적화 구축  
재료 성분-옵션 1 : 재료 성분보고

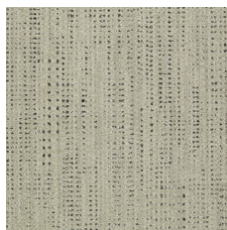
MR 크레딧 : 제품 공개 및 최적화 구축  
재료 성분-옵션 2 : 재료 성분 최적화

MR 크레딧 : 제품 공개 및 최적화 구축  
원료 소싱-옵션 2 : 리더십 추출 사례

EQ 크레딧 : 저 발광 재료  
옵션 1 : 제품 범주 계산

MR Credit: Interiors Life-Cycle Impact Reduction  
Option 3: Design for Flexibility

## Available Colorways



Natural Silk 96111



Heddle 96156



Pidan 96314



Tradition 96496



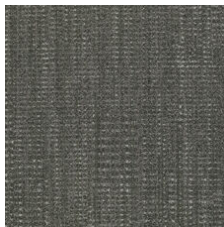
Angkor 96500



Naga 96504



Pagoda 96515



Handcraft 96555



Bayon 96585



Copper 96601



Temple 96713



Kadai 96760



Annato 96880



Sanskrit 96906

## 추가 정보

\* To learn more about the recyclability of our products and our re[TURN], please visit [shawcontract.com/sustainability](https://shawcontract.com/sustainability).

\*\*Meets or exceeds all local and national regulations in country of manufacture.

\*\*\*This carpet is manufactured to be ADA compliant, but to be fully ADA compliant, the end-user must ensure the carpet is adhered to the floor and installed as outlined in the ADA standards.

[Installation Guidelines](#)

[Maintenance Guidelines](#)

Specifications are subject to nominal manufacturing variance. Material supply and/or manufacturing processes may necessitate changes without notice.

This product is an exclusive design and may not be duplicated in any manner. Use of this design in the creation of another product design is also strictly prohibited.

Visit [shawcontract.com/testing](https://shawcontract.com/testing) for more information.

Corporate Headquarters +1 800 257 7429 | +1 706 532 7984 | Atlanta +1 404 853 7429 | Bengaluru +91 80 6773 0202 | Beijing +86 10 6568 588 | Chicago +1 312 467 1331 | Dubai +971 4 584 6956 | Hong Kong +852 2623 0371 | Latin America (Miami) +1 305 827 5912 | London +44 207 961 4120 | Los Angeles +1 800 233 1614 | Melbourne +61 3 9939 8543 | Mexico City +55 5010 7600 | Mumbai +91 22 6284 5050 | Nantong +86 400 800 7429 | New York +1 212 953 7429 | Paris +33 (0) 1 81 22 44 39 | San Francisco +1 415 955 1920 | Santiago +562 2431 5000 x 550 | São Paulo +55 11 3071 1702 | Shanghai +86 21 3338 4000 | Singapore +65 6733 1811 | Sydney +61 800 556 302

