

## Source Tile

|            |                                                                                                                                                                                                                                    |                       |
|------------|------------------------------------------------------------------------------------------------------------------------------------------------------------------------------------------------------------------------------------|-----------------------|
| 상품 유형      | <b>Carpet Tile</b>                                                                                                                                                                                                                 |                       |
| 수집         | <b>Living Systems</b>                                                                                                                                                                                                              |                       |
| 스타일 번호     | <b>5T315</b>                                                                                                                                                                                                                       |                       |
| 구성         | <b>다중 레벨 루프식</b>                                                                                                                                                                                                                   |                       |
| 염료 방법      | <b>100% 원착 염색</b>                                                                                                                                                                                                                  |                       |
| 기본 백업      | <b>합성</b>                                                                                                                                                                                                                          |                       |
| 보조 백업      | <b>Ecoworx® 타일</b>                                                                                                                                                                                                                 |                       |
| 보호 처리      | <b>SSP® Shaw 흠먼지 보호</b>                                                                                                                                                                                                            |                       |
| 권장 접착제     | <b>LokDots, 3000 Carpet Tile 4 Gallon, 3000 Carpet Tile 1 Gallon, 4151 Multi-Use Carpet Tile 4 Gallon, 5000 Carpet Tile 1 Gallon, LokWorx Adhesive Tabs, 3800 Indoor Outdoor Carpet Tile 4 Gallon or 5000 Carpet Tile 4 Gallon</b> |                       |
|            | u.s.                                                                                                                                                                                                                               | metric                |
| 제품 크기      | <b>9 in x 36 in</b>                                                                                                                                                                                                                | <b>23 cm x 91 cm</b>  |
| 상자 당 면적    | <b>45 ft²</b>                                                                                                                                                                                                                      | <b>4.18 m²</b>        |
| 상자 당 조각    | <b>20 pcs</b>                                                                                                                                                                                                                      |                       |
| 계량기        | <b>1/10 in</b>                                                                                                                                                                                                                     | <b>39.4 per 10 cm</b> |
| 스티치        | <b>10.0 per in</b>                                                                                                                                                                                                                 | <b>40.5 per 10 cm</b> |
| 완성 된 말뚝 두께 | <b>0.068 in</b>                                                                                                                                                                                                                    | <b>1.73 mm</b>        |
| 평균 밀도      | <b>9000 oz/yd³</b>                                                                                                                                                                                                                 | <b>0.333 g/cm³</b>    |
| 킬로 텍스      |                                                                                                                                                                                                                                    | <b>9.38</b>           |
| 총 두께       | <b>0.209 in</b>                                                                                                                                                                                                                    | <b>5.31 mm</b>        |
| 슬을다는 무게    | <b>17 oz/yd²</b>                                                                                                                                                                                                                   | <b>576.4 g/m²</b>     |



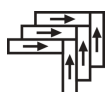
## 권장 설치 방법



Ashlar



Brick



Herringbone



Monolithic



Stagger

## 데이터 + 테스트

|                     |                                    |
|---------------------|------------------------------------|
| 복사 패널 (Astm E648)   | <b>Class I</b>                     |
| Nbs 연기              | <b>Less Than 450</b>               |
| 정전기 성향              | <b>Less Than 3.5 kv</b>            |
| Cri 그린 라벨 플러스 (Glp) | <b>USA GLP9968   China GLP1263</b> |
| 알약 테스트              | <b>Pass*</b>                       |

Test Reports may be included or listed by the manufacturing/inventory style number as opposed to the noted selling style number.

## 보증

## 종신 상용 제한

코디네이팅 제품

Carpet Tile: **Endless Tile, Observe Tile, Respond Tile, Transform Tile, Observe Color Tile, Respond Color Tile, Transform Color Tile, Boundless Tile**

속성 + 인증

Certifications Below Apply Exclusively To The Carpet Tile Rug Itself And Not The Lokworx Tabs Adhesive

Health & Wellbeing

|                                  |                                                                                                                                                                                                                                                                                                                                                                              |
|----------------------------------|------------------------------------------------------------------------------------------------------------------------------------------------------------------------------------------------------------------------------------------------------------------------------------------------------------------------------------------------------------------------------|
| Material Ingredient Transparency | <a href="#">Cradle to Cradle Certified®   Silver Level (Version 4.0)</a><br><a href="#">Health Product Declaration (HPD)   1,000ppm 노출</a><br><a href="#">Living Building Challenge (LBC)   적색목록 화학물질 없음</a><br><a href="#">Declare   LBC 규격</a><br><a href="#">Declare   LBC 규격</a><br><a href="#">NSF 140   골드</a><br><a href="#">CRI Green Label Plus (GLP)   GLP9968</a> |
| Indoor Air Quality               |                                                                                                                                                                                                                                                                                                                                                                              |

Climate Impact

|                                         |                                                             |
|-----------------------------------------|-------------------------------------------------------------|
| Environmental Product Declaration (EPD) | <a href="#">ISO 14044, ISO 14025 및 EN15804에 따라 타사 인증 획득</a> |
| Embodied Carbon (Cradle to Gate)        | <b>3.69 kg CO<sub>2</sub>/m<sup>2</sup></b>                 |
| Life-Cycle Carbon Emissions             | <b>Carbon Neutral</b>                                       |
| Total Recycled Content                  | <b>56% (Pre-Consumer 56%   Post-Consumer 0%)</b>            |
| Product Packaging                       | <b>100% 재활용 가능</b>                                          |

Global Product Assessment

|  |                                                                                                                                                                                                                                                                                                                    |
|--|--------------------------------------------------------------------------------------------------------------------------------------------------------------------------------------------------------------------------------------------------------------------------------------------------------------------|
|  | <a href="#">Singapore Green Label   인증</a><br><b>CE Marking (EN 14041)   타사 인증 획득</b><br><a href="#">Environmental Guarantee*   Re[turn] Reclamation Program*   Through Our Environmental Guarantee, Shaw Pledges to Transport And Recycle Any Ecoworx Carpet.</a><br><b>Country of Origin**   USA &amp; China</b> |
|--|--------------------------------------------------------------------------------------------------------------------------------------------------------------------------------------------------------------------------------------------------------------------------------------------------------------------|

Well V2 Contribution Credit

|                                                                                                          |                                                |
|----------------------------------------------------------------------------------------------------------|------------------------------------------------|
| X08 Hazardous Material Reduction Part 1: Limit Hazardous Materials Optimization – 1 pt                   | <b>C2C Silver Level (Version 4.0)</b>          |
| X10 Volatile Compound Reduction Part 1 (A): Manage Volatile Organic Compounds (VOCs) Optimization – 1 pt | <b>C2C Silver Level (Version 4.0)</b>          |
| X11 Long Term Emissions Control Part 2: Flooring Optimization – 1 pt                                     | <b>Green Label Plus Certification: GLP9968</b> |
| X13 Enhanced Material Precaution Part 1: Select Optimized Materials Optimization – max 2 pts             | <b>C2C Silver Level (Version 4.0)</b>          |
| X14 Material Transparency Part 1: Promote Ingredient Disclosure Optimization – max 2 pts                 | <b>C2C Silver Level (Version 4.0)</b>          |

## 녹색의 공헌 기여 크레딧

MR 크레딧 : 제품 공개 및 최적화 구축  
환경 제품 선언-옵션 1 : 환경 제품 선언 (EPD)

MR 크레딧 : 제품 공개 및 최적화 구축  
재료 성분-옵션 1 : 재료 성분보고

MR 크레딧 : 제품 공개 및 최적화 구축  
재료 성분-옵션 2 : 재료 성분 최적화

MR 크레딧 : 제품 공개 및 최적화 구축  
원료 소싱-옵션 2 : 리더십 추출 사례

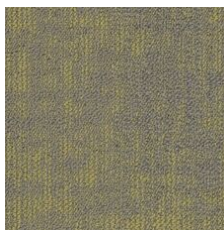
EQ 크레딧 : 저 발광 재료  
옵션 1 : 제품 범주 계산

MR Credit: Interiors Life-Cycle Impact Reduction  
Option 3: Design for Flexibility

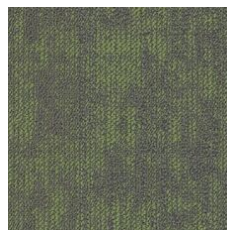
## Available Colorways



Optimistic 05105  
LRV 22.1 | L\* 54.1



Ochre 05225  
LRV 20.9 | L\* 52.86



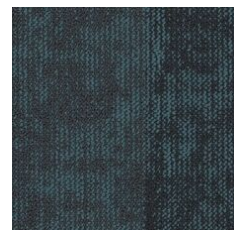
Nature 05326  
LRV 15.8 | L\* 46.7



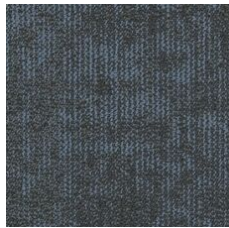
Lake 05327  
LRV 12.2 | L\* 41.55



Forests 05334  
LRV 6 | L\* 29.37



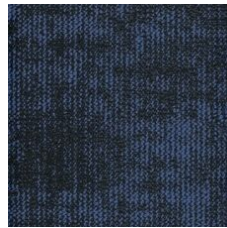
Oceans 05405  
LRV 5.9 | L\* 29.04



Flora 05411  
LRV 8.2 | L\* 34.47



Springs 05440  
LRV 6.3 | L\* 30.06



Skies 05486  
LRV 4 | L\* 23.62



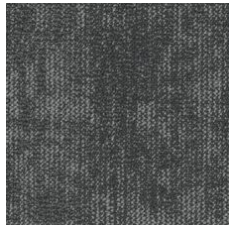
Lava 05500  
LRV 6.5 | L\* 30.75



Deepest 05505  
LRV 3.6 | L\* 22.39



Radiant 05515  
LRV 18.1 | L\* 49.57



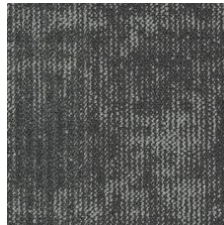
Wild 05557  
LRV 9.4 | L\* 36.75



Calm 05580  
LRV 7.1 | L\* 32.09



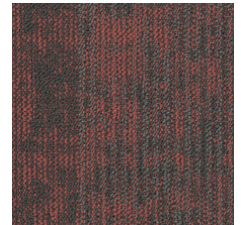
Untamed 05595  
LRV 12.5 | L\* 41.99



Fragile 05760  
LRV 12.4 | L\* 41.8



Mountain 05761  
LRV 14.6 | L\* 45.04



Coral 05865  
LRV 9.8 | L\* 37.45

3rd Party Certified in Accordance with ISO14044, ISO14025 & EN15804

C2C Silver Level (Version 4.0) or HPD (Version 2.1)

C2C Silver Level (Version 4.0)

**Environmental Guarantee: Re[turn] Reclamation Program\* | Through Our Environmental Guarantee, Shaw Pledges to Transport And Recycle Any Ecoworx® Carpet.**

**Green Label Plus Certification: GLP9968**

**Ecoworx® Tile with Lokdots Installation System**

## 추가 정보

\* To learn more about the recyclability of our products and our re[TURN], please visit [shawcontract.com/sustainability](http://shawcontract.com/sustainability).

\*\*Meets or exceeds all local and national regulations in country of manufacture.

[Installation Guidelines](#)

[Maintenance Guidelines](#)

Specifications are subject to nominal manufacturing variance. Material supply and/or manufacturing processes may necessitate changes without notice.

This product is an exclusive design and may not be duplicated in any manner. Use of this design in the creation of another product design is also strictly prohibited.

Visit [shawcontract.com/testing](http://shawcontract.com/testing) for more information.



**Declare.**



**PVC-Free**

Corporate Headquarters +1 800 257 7429 | +1 706 532 7984 | Atlanta +1 404 853 7429 | Bengaluru +91 80 6773 0202 | Beijing +86 10 6568 588 | Chicago +1 312 467 1331 | Dubai +971 4 584 6956 | Hong Kong +852 2623 0371 | London +44 207 961 4120 | Los Angeles +1 800 233 1614 | Melbourne +61 3 9939 8543 | Mexico City +55 5010 7600 | Mumbai +91 22 6284 5050 | Nantong +86 400 800 7429 | New York +1 212 953 7429 | Paris +33 (0) 1 81 22 44 39 | San Francisco +1 415 955 1920 | Shanghai +86 21 3338 4000 | Singapore +65 6733 1811 | Sydney +61 800 556 302

© 2025 Shaw Industries Group, Inc., a Berkshire Hathaway Company  
April 18, 2025

4 of 4