

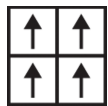
## Arrange Tile

상품 유형	Carpet Tile
수집	Simply By Nature
스타일 번호	5T316
구성	다중 레벨 루프식
섬유	Ecosolution Q® 나일론
염료 방법	100% 원착 염색
기본 백업	합성
보조 백업	Ecworx® 타일
보호 처리	SSP® Shaw 휴먼지 보호

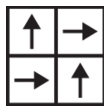
	u.s.	metric
제품 크기	24 in x 24 in	61 cm x 61 cm
상자 당 면적	48 ft <sup>2</sup>	4.46 m <sup>2</sup>
상자 당 조각	12 pcs	
계량기	1/10 in	39.4 per 10 cm
스티치	10.0 per in	40.5 per 10 cm
완성 된 말뚝 두께	0.098 in	2.49 mm
평균 밀도	5878 oz/yd <sup>3</sup>	0.217 g/cm <sup>3</sup>
킬로 텍스		9.36
총 두께	0.224 in	5.69 mm
슬을다는 무게	16 oz/yd <sup>2</sup>	542.5 g/m <sup>2</sup>



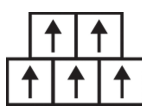
## 권장 설치 방법



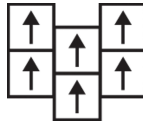
Monolithic



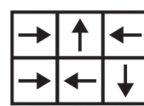
Quarter Turn



Brick



Ashlar



Random

## 데이터 + 테스트

복사 패널 (Astm E648)

Class I

Nbs 연기

Less Than 450

정전기 성향

Less Than 3.5 kv

알약 테스트

Pass\*

Ada 준수

0.6 이상, ADA 보행 노면과 이용 가능한 경로의 권장 마찰계수 충족\*\*\*

Test Reports may be included or listed by the manufacturing/inventory style number as opposed to the noted selling style number.

## 보증

종신 상용 제한

## 코디네이팅 제품

Carpet Tile: **Array Tile, Offset Tile, Structure Tile**

## 속성 + 인증

Certifications Below Apply Exclusively To The Carpet Tile Rug Itself And Not The Lokworx Tabs Adhesive

## Climate Impact

Embodied Carbon (Cradle to Gate)

**10.7 (based upon 19.6 oz face weight) kg CO<sub>2</sub>/m<sup>2</sup>**

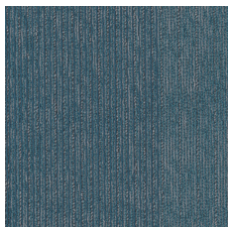
Total Recycled Content

**37% (Pre-Consumer 37% | Post-Consumer 0%)**

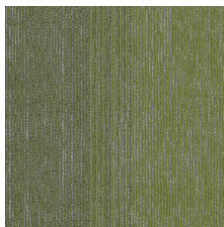
## Global Product Assessment

**Country of Origin\*\* | Imported**

## Available Colorways



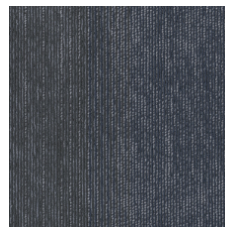
Reflection 94323



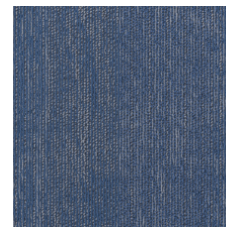
Mountain View 94326



Glassy Green 94335



Shimmery Blue 94485



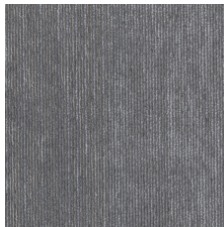
Blue Belle 94486



Chrome Black 94500



Glossy Charcoal 94505



Sterling Silver 94515



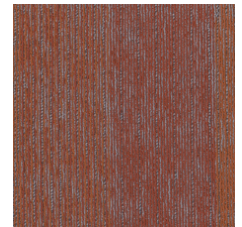
Steel Grey 94530



Mirror Grey 94535



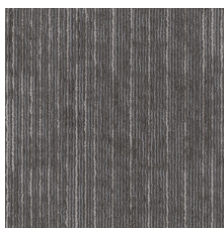
Polished Stone 94557



Golden Gate 94668



Metallic Beige 94760



Shiny Pebble 94761

 **Quick Ship** Immediate - APAC Instock - Up to 1,000sqm

## 추가 정보

\*\*\*This carpet is manufactured to be ADA compliant, but to be fully ADA compliant, the end-user must ensure the carpet is adhered to the floor and installed as outlined in the ADA standards.

Specifications are subject to nominal manufacturing variance. Material supply and/or manufacturing processes may necessitate changes without notice.

This product is an exclusive design and may not be duplicated in any manner. Use of this design in the creation of another product design is also strictly prohibited.

Visit [shawcontract.com/testing](https://shawcontract.com/testing) for more information.

Corporate Headquarters +1 800 257 7429 | +1 706 532 7984 | Atlanta +1 404 853 7429 | Bengaluru +91 80 6773 0202 | Beijing +86 10 6568 588 | Chicago +1 312 467 1331 | Dubai +971 4 584 6956 | Hong Kong +852 2623 0371 | London +44 207 961 4120 | Los Angeles +1 800 233 1614 | Melbourne +61 3 9939 8543 | Mexico City +55 5010 7600 | Mumbai +91 22 6284 5050 | Nantong +86 400 800 7429 | New York +1 212 953 7429 | Paris +33 (0) 1 81 22 44 39 | San Francisco +1 415 955 1920 | Shanghai +86 21 3338 4000 | Singapore +65 6733 1811 | Sydney +61 800 556 302

© 2025 Shaw Industries Group, Inc., a Berkshire Hathaway Company  
July 1, 2025

2 of 3

