

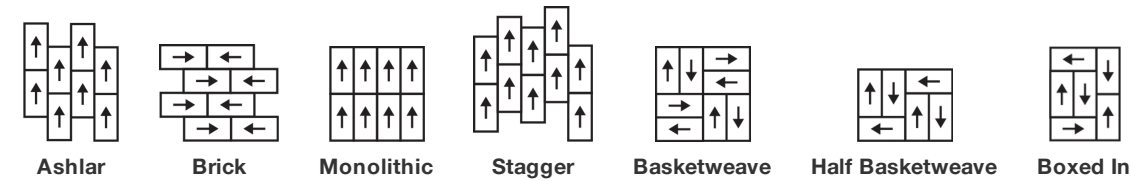
Process Tile

|                       |   |
|-----------------------|---|
| Product Type          | Carpet Tile   |
| Collection            | Community   |
| Style Number          | 5T302   |
| Construction          | Multi-Level Pattern/Cut Loop  |
| Dye Method            | 100% Solution Dyed  |
| Primary Backing       | Synthetic   |
| Secondary Backing     | Ecworx® Tile  |
| Protective Treatments | SSP® Shaw Soil Protection   |
| Recommended Adhesive  | LokDots, 3000 Carpet Tile 4 Gallon, 3000 Carpet Tile 1 Gallon, 4151 Multi-Use Carpet Tile 4 Gallon, 5000 Carpet Tile 1 Gallon, LokWorx Adhesive Tabs, 3800 Indoor Outdoor Carpet Tile 4 Gallon or 5000 Carpet Tile 4 Gallon |

|                         |               |                |
|-------------------------|---------------|----------------|
|                         | u.s.          | metric         |
| Product Size            | 18 in x 36 in | 46 cm x 91 cm  |
| Area Per Carton         | 45 ft²        | 4.18 m²        |
| Pieces Per Carton       | 10 pcs        |                |
| Gauge                   | 1/10 in       | 39.4 per 10 cm |
| Stitches                | 9.5 per in    | 38.0 per 10 cm |
| Finished Pile Thickness | 0.130 in      | 3.3 mm         |
| Average Density         | 7754 oz/yd³   | 0.287 g/cm³    |
| Kilotex                 |               | 8.85           |
| Total Thickness         | 0.300 in      | 7.62 mm        |
| Tufted Weight           | 28 oz/yd²     | 949.4 g/m²     |



Recommended Installation Method



Data + Testing

|                            |  |
|----------------------------|--|
| Radiant Panel              | Class I  |
| Nbs Smoke                  | Less Than 450  |
| Electrostatic Propensity   | Less Than 3.5 kv   |
| Cri Green Label Plus (Glp) | USA GLP9968   China GLP1263  |
| Pill Test                  | Pass*  |
| Ada Compliance             | >0.6, Meets the recommended static coefficient of friction for ADA walking surfaces and accessible routes*** |

Test Reports may be included or listed by the manufacturing/inventory style number as opposed to the noted selling style number.

Warranties

Lifetime Commercial Limited

Coordinating Products

COREtec: **Inclusive, Expression**

Carpet Tile: **Knotted Tile, Back Weave Tile, Exchange Tile, Heddle Tile, Flat Weave Tile**

Broadloom: **Embrace, Share**

Material Health & Environmental Certifications

Certifications Below Apply Exclusively To The Carpet Tile Rug Itself And Not The Lokworx Tabs Adhesive

Health & Wellbeing

Material Ingredient Transparency

**Cradle to Cradle Certified® | Silver Level (Version 4.0)**  
**Health Product Declaration (HPD) | 1,000 ppm Disclosure**  
**Living Building Challenge (LBC) | Free of Red List Chemicals**  
**Declare | LBC Compliant**  
**Declare | LBC Compliant**  
**NSF 140 | Gold**  
**CRI Green Label Plus (GLP) | GLP9968**

Indoor Air Quality

Climate Impact

Environmental Product Declaration (EPD)

Embodied Carbon (Cradle to Gate)

Life-Cycle Carbon Emissions

Total Recycled Content

Product Packaging

**3rd Party Certified in Accordance with ISO14044, ISO14025 & EN15804**  
**3.91 kg CO<sub>2</sub>/m<sup>2</sup>**  
**Carbon Neutral**  
**61% (Pre-Consumer 61% | Post-Consumer 0%)**  
**100% Recyclable**

Global Product Assessment

**Singapore Green Label | Certified**  
**CE Marking (EN 14041) | 3rd Party Certified**  
**Environmental Guarantee\* | Re[turn] Reclamation Program\* | Through Our Environmental Guarantee, Shaw Pledges to Transport And Recycle Any Ecoworx Carpet.**  
**Country of Origin\*\* | USA & China**

Well V2 Contribution Credit

X08 Hazardous Material Reduction Part 1: Limit Hazardous Materials Optimization – 1 pt

X10 Volatile Compound Reduction Part 1 (A): Manage Volatile Organic Compounds (VOCs) Optimization – 1 pt

X11 Long Term Emissions Control Part 2: Flooring Optimization – 1 pt

X13 Enhanced Material Precaution Part 1: Select Optimized Materials Optimization – max 2 pts

X14 Material Transparency Part 1: Promote Ingredient Disclosure Optimization – max 2 pts

**C2C Silver Level (Version 4.0)**

**C2C Silver Level (Version 4.0)**

**Green Label Plus Certification: GLP9968**  
**C2C Silver Level (Version 4.0)**

**C2C Silver Level (Version 4.0)**

## Green Leed Contribution Credit

MR Credit: Building Product Disclosure and Optimization  
Environmental Product Declarations - Option 1: Environmental Product Declaration (EPD)

MR Credit: Building Product Disclosure and Optimization  
Material Ingredients - Option 1: Material Ingredient Reporting

MR Credit: Building Product Disclosure and Optimization  
Material Ingredients - Option 2: Material Ingredient Optimization

MR Credit: Building Product Disclosure and Optimization  
Sourcing of Raw Materials - Option 2: Leadership Extraction Practices

EQ Credit: Low Emitting Materials  
Option 1: Product Category Calculations

MR Credit: Interiors Life-Cycle Impact Reduction  
Option 3: Design for Flexibility

**3rd Party Certified in Accordance with ISO14044, ISO14025 & EN15804**

**C2C Silver Level (Version 4.0) or HPD (Version 2.1)**

**C2C Silver Level (Version 4.0)**

**Environmental Guarantee: Re[turn] Reclamation Program\* | Through Our Environmental Guarantee, Shaw Pledges to Transport And Recycle Any Ecoworx® Carpet.**

**Green Label Plus Certification: GLP9968**

**Ecoworx® Tile with Lokdots Installation System**

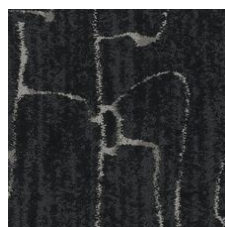
## Available Colorways



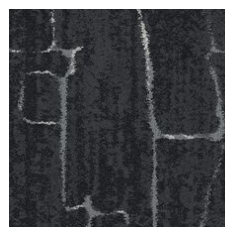
Argan 01100  
LRV 30 | L\* 61.67



Wool 01105  
LRV 18.1 | L\* 49.67



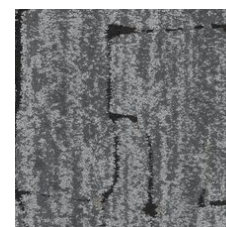
Souk 01500  
LRV 3.3 | L\* 21.11



Medina 01505  
LRV 4.6 | L\* 25.57



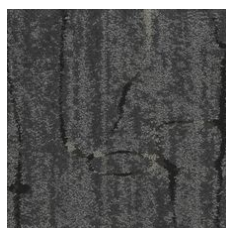
Riad 01518  
LRV 12.3 | L\* 41.76



Silver 01535  
LRV 15.1 | L\* 45.72



Blended 01555  
LRV 9.3 | L\* 36.65



Crafted 01580  
LRV 6.8 | L\* 31.37



Henna 01585  
LRV 3.6 | L\* 22.21

 **Quick Ship 4 Weeks**

## Additional Information

\* To learn more about the recyclability of our products and our re[TURN], please visit [shawcontract.com/sustainability](https://shawcontract.com/sustainability).

\*\*Meets or exceeds all local and national regulations in country of manufacture.

\*\*\*This carpet is manufactured to be ADA compliant, but to be fully ADA compliant, the end-user must ensure the carpet is adhered to the floor and installed as outlined in the ADA standards.

[Installation Guidelines](#)

[Maintenance Guidelines](#)

Specifications are subject to nominal manufacturing variance. Material supply and/or manufacturing processes may necessitate changes without notice.

This product is an exclusive design and may not be duplicated in any manner. Use of this design in the creation of another product design is also strictly prohibited.

Visit [shawcontract.com/testing](https://shawcontract.com/testing) for more information.

