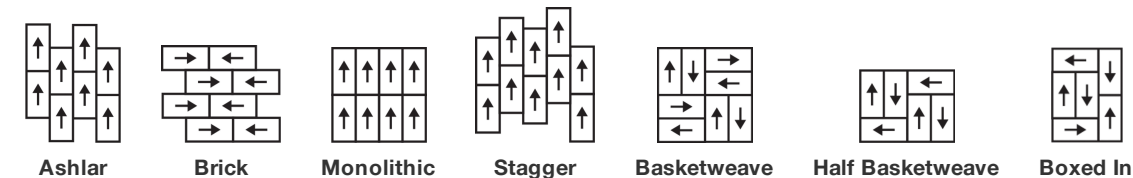


Process Tile

Tipo De Produto	Carpete Em Placas	
Coleção	Community	
Número Do Produto	5T302	
Construção	Padrão Multinível / Pêlo Cortado/Bouclé	
Método De Tingimento	100% Solution Dyed	
Base Primária	Sintético	
Base Secundária	Base Ecoworx®	
Tratamentos De Proteção	SSP® Shaw Proteção Anti-Manchas	
Adesivo Recomendado	LokDots, 3000 Carpet Tile 4 Gallon, 3000 Carpet Tile 1 Gallon, 4151 Multi-Use Carpet Tile 4 Gallon, 5000 Carpet Tile 1 Gallon, LokWorx Adhesive Tabs, 3800 Indoor Outdoor Carpet Tile 4 Gallon or 5000 Carpet Tile 4 Gallon	
	u.s.	metric
Tamanho Do Produto	18 in x 36 in	46 cm x 91 cm
Área Por Caixa	45 ft²	4.18 m²
Peças Por Caixa	10 pcs	
Calibre	1/10 in	39.4 per 10 cm
Pontos	9.5 per in	38.0 per 10 cm
Espessura Da Fibra Acabada	0.130 in	3.3 mm
Densidade Média	7754 oz/yd³	0.287 g/cm³
Kilotex		8.85
Espessura Total	0.300 in	7.62 mm
Peso Da Fibra	28 oz/yd²	949.4 g/m²



Método De Instalação Recomendado



Dados + Teste

Painel Radiante (Astrm E648)	Class I
Nbs Fumaça	Less Than 450
Propensão Eletrostática	Less Than 3.5 kv
Cri Green Label Plus (Bpl)	USA GLP9968 China GLP1263
Teste De Ignição (Pill)	Pass*
Ada Compliance	≥0.6, Atende as recomendações do coeficiente de fricção estático para as superfícies caminháveis ADA e rotas acessíveis***

Test Reports may be included or listed by the manufacturing/inventory style number as opposed to the noted selling style number.

Garantias

Garantia Comercial Vitalícia Limitada

Produtos Coordenados

COREtec: **Inclusive, Expression**
Carpet Tile: **Knotted Tile, Back Weave Tile, Exchange Tile, Heddle Tile, Flat Weave Tile**
Broadloom: **Embrace, Share**

Atributos + Certificações

Certifications Below Apply Exclusively To The Carpet Tile Rug Itself And Not The Lokworx Tabs Adhesive

Health & Wellbeing

Material Ingredient Transparency	Cradle to Cradle Certified® Silver Level (Version 4.0) Health Product Declaration (HPD) Divulgado 1,000 ppm Living Building Challenge (LBC) Livre De Químicos Do Red List Declare Compatível LBC Declare Compatível LBC NSF 140 Ouro CRI Green Label Plus (GLP) GLP9968
Indoor Air Quality	
Climate Impact	
Environmental Product Declaration (EPD)	3rd Party Certified De Acordo Com ISO14044, ISO14025 & EN15804
Embodied Carbon (Cradle to Gate)	3.91 kg CO₂/m²
Life-Cycle Carbon Emissions	Carbon Neutral
Total Recycled Content	61% (Pre-Consumer 61% Post-Consumer 0%)
Product Packaging	100% Reciclável
Global Product Assessment	Singapore Green Label Certificado CE Marking (EN 14041) Certificado 3rd Party Environmental Guarantee* Re[turn] Reclamation Program* Through Our Environmental Guarantee, Shaw Pledges to Transport And Recycle Any Ecoworx Carpet. Country of Origin** USA & China

Well V2 Contribution Credit

X08 Hazardous Material Reduction Part 1: Limit Hazardous Materials Optimization – 1 pt	C2C Silver Level (Version 4.0)
X10 Volatile Compound Reduction Part 1 (A): Manage Volatile Organic Compounds (VOCs) Optimization – 1 pt	C2C Silver Level (Version 4.0)
X11 Long Term Emissions Control Part 2: Flooring Optimization – 1 pt	Green Label Plus Certification: GLP9968
X13 Enhanced Material Precaution Part 1: Select Optimized Materials Optimization – max 2 pts	C2C Silver Level (Version 4.0)
X14 Material Transparency Part 1: Promote Ingredient Disclosure Optimization – max 2 pts	C2C Silver Level (Version 4.0)

Crédito De Contribuição

MR Credit: Divulgação e otimização de produtos de construção
Declarações ambientais do produto - Opção 1: Declaração ambiental do produto (EPD)

MR Credit: Divulgação e otimização de produtos de construção
Ingredientes materiais - Opção 1: Relatório de ingredientes materiais

MR Credit: Divulgação e otimização de produtos de construção
Ingredientes do material - Opção 2: Otimização do ingrediente do material

MR Credit: Divulgação e otimização de produtos de construção
Fornecimento de matérias-primas - Opção 2: Práticas de extração de liderança

Crédito de EQ: Materiais de baixa emissão
Opção 1: cálculos de categoria de produto

MR Credit: Interiors Life-Cycle Impact Reduction
Option 3: Design for Flexibility

3rd Party Certified in Accordance with ISO 14044, ISO 14025 & EN15804

C2C Silver Level (Version 4.0) or HPD (Version 2.1)

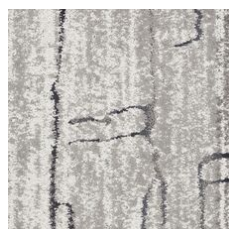
C2C Silver Level (Version 4.0)

Environmental Guarantee: Re[turn] Reclamation Program* | Through Our Environmental Guarantee, Shaw Pledges to Transport And Recycle Any Ecoworx® Carpet.

Green Label Plus Certification: GLP9968

Ecworx® Tile with Lokdots Installation System

Available Colorways



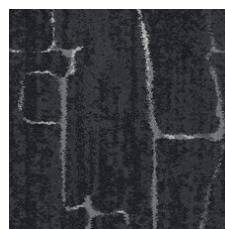
Argan 01100
LRV 30 | L* 61.67



Wool 01105
LRV 18.1 | L* 49.67



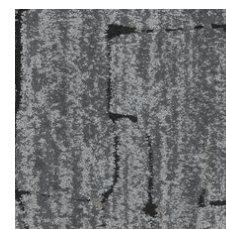
Souk 01500
LRV 3.3 | L* 21.11



Medina 01505
LRV 4.6 | L* 25.57



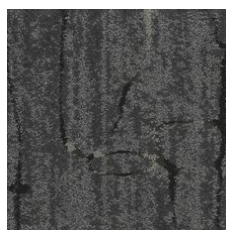
Riad 01518
LRV 12.3 | L* 41.76



Silver 01535
LRV 15.1 | L* 45.72



Blended 01555
LRV 9.3 | L* 36.65



Crafted 01580
LRV 6.8 | L* 31.37



Henna 01585
LRV 3.6 | L* 22.21

Informação Adicional

* To learn more about the recyclability of our products and our re[TURN], please visit shawcontract.com/sustainability.

**Meets or exceeds all local and national regulations in country of manufacture.

***This carpet is manufactured to be ADA compliant, but to be fully ADA compliant, the end-user must ensure the carpet is adhered to the floor and installed as outlined in the ADA standards.

[Installation Guidelines](#)

[Maintenance Guidelines](#)

Specifications are subject to nominal manufacturing variance. Material supply and/or manufacturing processes may necessitate changes without notice.

This product is an exclusive design and may not be duplicated in any manner. Use of this design in the creation of another product design is also strictly prohibited.

Visit shawcontract.com/testing for more information.

