

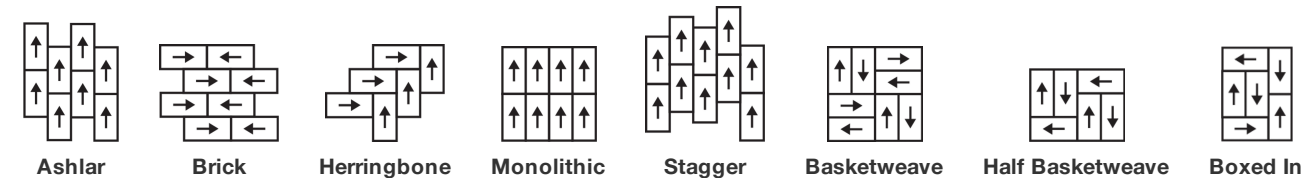
Exchange Tile

Product Type	Carpet Tile
Collection	Community
Style Number	5T304
Construction	Multi-Level Pattern Cut/Loop
Fiber	Ecosolution Q100® Nylon
Dye Method	100% Solution Dyed
Primary Backing	Synthetic
Secondary Backing	Ecoworx® Tile
Protective Treatments	SSP® Shaw Soil Protection
Recommended Adhesive	3000 Carpet Tile 1 Gallon, 4151 Multi-Use Carpet Tile 4 Gallon, 5000 Carpet Tile 1 Gallon, LokWorx Adhesive Tabs, 3800 Indoor Outdoor Carpet Tile 4 Gallon, 5000 Carpet Tile 4 Gallon, LokDots or 3000 Carpet Tile 4 Gallon

	u.s.	metric
Product Size	18 in x 36 in	46 cm x 91 cm
Area per Carton	45 ft²	4.18 m²
Pieces per Carton	10 pcs	
Gauge	1/10 in	39.4 per 10 cm
Stitches	9.5 per in	38.0 per 10 cm
Finished Pile Thickness	0.144 in	3.66 mm
Average Density	7000 oz/yd³	0.259 g/cm³
Kilotex		8.8
Total Thickness	0.315 in	8 mm
Tufted Weight	28 oz/yd²	949.4 g/m²



Recommended Installation Method



Performance + Testing

Radiant Panel	Class I
NBS Smoke	Less Than 450
Electrostatic Propensity	Less Than 3.5 kv
CRI Green Label Plus (GLP)	USA GLP9968 China GLP1263
Pill Test	Pass*
ADA Compliance	>0.6, meets the recommended static coefficient of friction for ADA walking surfaces and accessible routes***

Test Reports may be included or listed by the manufacturing/inventory style number as opposed to the noted selling style number.

Warranties

Lifetime Commercial Limited Warranty

Coordinating Products

COREtec: **Inclusive, Expression**

Carpet Tile: **Knotted Tile, Process Tile, Back Weave Tile, Heddle Tile, Flat Weave Tile**

Broadloom: **Embrace, Share**

Diversity & Inclusion

We promote supplier participation that is reflective of Shaw Industries' diverse customer base and local community. We believe having a strong Supplier Diversity Program is strategic for bringing more innovation to our businesses and opening new markets for growth.

Material Health & Environmental Certifications

Certifications below apply exclusively to the carpet tile rug itself and not the LokWorx Tabs adhesive

Health & Wellbeing

Material Ingredient Transparency	Cradle to Cradle Certified® Silver Level (Version 4.0) Health Product Declaration (HPD) 1,000 ppm Disclosure Living Building Challenge (LBC) Free of Red List Chemicals Declare LBC Compliant Declare LBC Compliant NSF 140 Gold
Indoor Air Quality	CRI Green Label Plus (GLP) GLP9968
Climate Impact	
Environmental Product Declaration (EPD)	3rd Party Certified in Accordance with ISO14044, ISO14025 & EN15804
Embodied Carbon (Cradle to Gate)	3.91 kg CO₂/m²
Life-Cycle Carbon Emissions	Carbon Neutral
Total Recycled Content	61% (Pre-Consumer 61% Post-Consumer 0%)
Product Packaging	100% Recyclable
Global Product Assessment	Singapore Green Label Certified CE Marking (EN 14041) 3rd Party Certified Environmental Guarantee* Re[turn] Reclamation Program* Through Our Environmental Guarantee, Shaw Pledges to Transport And Recycle Any Ecoworx Carpet. Country of Origin** USA & China

WELL V2 Contribution Credit

X08 Hazardous Material Reduction Part 1: Limit Hazardous Materials Optimization	C2C Silver Level (Version 4.0)
X10 Volatile Compound Reduction Part 1 (A): Manage Volatile Organic Compounds (VOCs) Optimization	C2C Silver Level (Version 4.0)
X11 Long Term Emissions Control Part 2: Flooring Optimization	Green Label Plus Certification: GLP9968
X13 Enhanced Material Precaution Part 1: Select Optimized Materials Optimization	C2C Silver Level (Version 4.0)
X14 Material Transparency Part 1: Promote Ingredient Disclosure Optimization	C2C Silver Level (Version 4.0)

Leed v4 Contribution Credits

MR Credit: Building Product Disclosure and Optimization
Environmental Product Declarations - Option 1: Environmental Product Declaration (EPD)

MR Credit: Building Product Disclosure and Optimization
Material Ingredients - Option 1: Material Ingredient Reporting

MR Credit: Building Product Disclosure and Optimization
Material Ingredients - Option 2: Material Ingredient Optimization

MR Credit: Building Product Disclosure and Optimization
Sourcing of Raw Materials - Option 2: Leadership Extraction Practices

EQ Credit: Low Emitting Materials
Option 1: Product Category Calculations

MR Credit: Interiors Life-Cycle Impact Reduction
Option 3: Design for Flexibility

3rd Party Certified in Accordance with ISO14044, ISO14025 & EN15804

C2C Silver Level (Version 4.0) or HPD (Version 2.1)

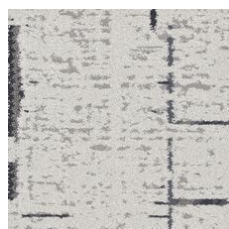
C2C Silver Level (Version 4.0)

Environmental Guarantee: Re[turn] Reclamation Program* | Through Our Environmental Guarantee, Shaw Pledges to Transport And Recycle Any Ecoworx Carpet.

Green Label Plus Certification: GLP9968

Ecworx Tile with Lokdots Installation System

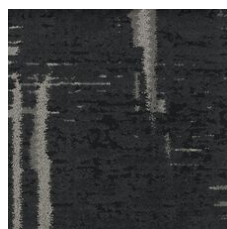
Available Colorways



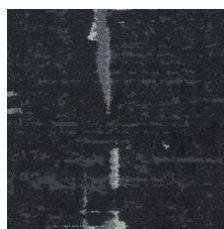
Argan 01100
LRV 33.2 | L* 64.34



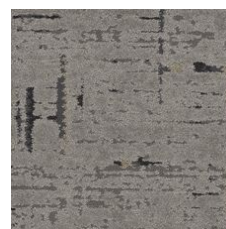
Wool 01105
LRV 20.7 | L* 52.61



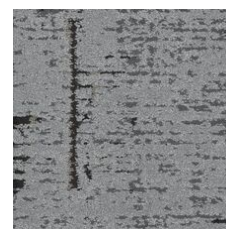
Souk 01500
LRV 3.5 | L* 21.88



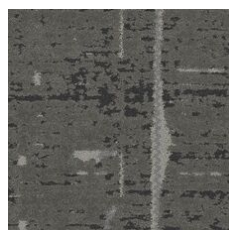
Medina 01505
LRV 3.1 | L* 20.55



Riad 01518
LRV 15.4 | L* 46.15



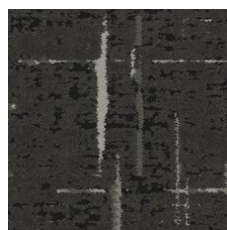
Silver 01535
LRV 17.1 | L* 48.35



Blended 01555
LRV 10.5 | L* 38.8



Crafted 01580
LRV 8.1 | L* 34.15



Henna 01585
LRV 5.9 | L* 29.05

Additional Information

* To learn more about the recyclability of our products and our re[TURN], please visit shawcontract.com/sustainability.

**Meets or exceeds all local and national regulations in country of manufacture.

***This carpet is manufactured to be ADA compliant, but to be fully ADA compliant, the end-user must ensure the carpet is adhered to the floor and installed as outlined in the ADA standards.

[Installation Guidelines](#)

[Maintenance Guidelines](#)

Specifications are subject to nominal manufacturing variance. Material supply and/or manufacturing processes may necessitate changes without notice.

This product is an exclusive design and may not be duplicated in any manner. Use of this design in the creation of another product design is also strictly prohibited.

Visit shawcontract.com/testing for more information.

