

Support Taskworx® Tile

Style Number	5T330	
Collection	Assembly	
Product Type	Carpet Tile	
Construction	Standard	Data + Performance
Type of Manufacture	ISO 2424	tufted 1/12" 47.2 per 10cm
Aspect	ISO 2424	Multi-Level Pattern Loop
Dye Method	EN 994	100% Solution Dyed
Dimensions	EN 994	25 cm x 100 cm 20 tiles (5 m²) per box
Primary Backing	ISO 2424	Pet Non-Woven
Secondary Backing	ISO 2424	Taskworx® Tile Polymer Modified Bitumen
Pile Fibre Composition	ISO 2424	Eco Solution Q® Polyamide 6
Total Thickness	ISO 1765	6.5 mm
Effective Pile Thickness	ISO 1766	2.4 mm
Total Mass	ISO 8543	3935 g/m²
Nominal Total Pile Mass	ISO 2424	647 g/m²
Effective Pile Mass	ISO 8543	280 g/m²
Pile Density	ISO 8543	0.114 g/cm³
Total Recycled Content		50% (pre-consumer 50% post-consumer 0%)



Performance

Number of Tufts	ISO 1763	163,000/m² 34.5 per 10cm
Electrostatic Propensity	ISO 6356	≤ 2.0 kv (Stroll Test)
Use Classification	EN 1307	33 Commercial Heavy
Luxury Class	EN 1307	LC1
Dimensional Stability	EN 986	≤ 0.2%
Impact Sound Insulation	ISO 10140	24 Db
Sound Absorption Classification	ISO 354/11654	0.15 Aw Class E
Thermal Resistance m² K/W	ISO 8302	0.069 M² K/W Tog 0.69
Dry Slip Resistance	ISO 13893	Pass / No Pulled Loops
Colour Fastness To Light	ISO 105-B02	>6
Flammability	EN 13501-1	Bfl-S1 (Adhered Testing)
Castor Chair	EN 985	≥2.4 Continuous Use

15 Year Commercial Limited Warranty subject to installation in full accordance with the manufacturer's instructions and a regular effective cleaning and maintenance programme. Second location warranties are available with the use of non-adhesive IOBAC Magtabs and Tabit accessories.

Recommended Installation Method



Ashlar



Brick



Herringbone



Monolithic



Stagger



24 dB



17

EU.DOP/0493/CPR/0621/0422/BT
OOSTERHOUT SHOWROOM, VAARTWEG 10, 4905
BL NETHERLANDS (NLD)
Notified Body 2895



22

UK.DOP/0338/CPR/1220/0422/BT
SHAW EUROPE LIMITED BLACKADDIE RD,
SANQUHAR DG4 6DB, UNITED KINGDOM
Approved Body 0338



EN14041:2004/AC:2006

For use as an indoor floor covering as specified by the manufacturer

Coordinating Products

Carpet Tile: **Establish Comfortworx® Tile, Support Comfortworx® Tile, Convene Comfortworx® Tile, Convene Taskworx® Tile, Establish Taskworx® Tile**

Material Health & Environmental Certifications

Certifications below apply exclusively to the carpet tile rug itself and not the LokWorx Tabs adhesive

Declaration of Performance

Building Research Establishment (BRE)

Country of Origin**

BREEAM Contribution Credit

EU.DOP/0493/CPR/0621/0422/BT

A+ Health/A+ Retail 0.301/0.399 Ecopoints

United Kingdom

**Certificate of Approval
Schools/Offices/Health/Industrial Shed
Retail**

Air Quality

Indoor Air Comfort Gold

M1

Certified

Certified

Memberships

WGBC Framework

UKGBC

Emirates Green Building Council

Chemsec

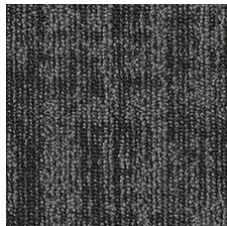
WGBC Framework

UKGBC

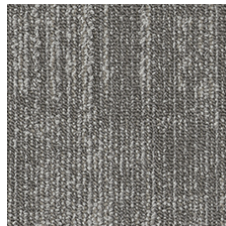
Emirates Green Building Council

Chemsec

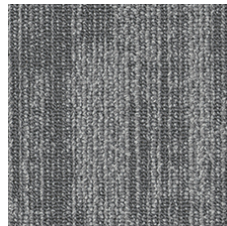
Light Reflectance Value



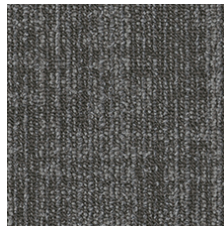
System 67505
LRV 6.6 | L* 30.84



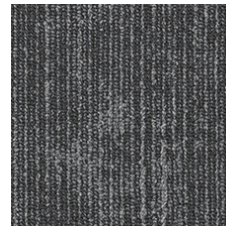
Interaction 67515
LRV 19.6 | L* 51.34



Network 67535
LRV 16.5 | L* 47.64



Link 67555
LRV 9.7 | L* 37.21



Foundation 67580
LRV 9.8 | L* 37.43

Additional Information

15 Year Commercial Limited warranty

Specifications are subject to nominal manufacturing variance. Material supply and/or manufacturing processes may necessitate changes without notice.

This product is an exclusive design and may not be duplicated in any manner. Use of this design in the creation of another product design is also strictly prohibited.

Visit shawcontract.com/testing for more information.

