



Arrange Taskworx® Tile

Style Number	5T332	
Collection	Simply By Nature	
Product Type	Carpet Tile	
Construction	Standard	Data + Performance
Type of Manufacture	ISO 2424	tufted 1/10"   39.4 per 10cm
Aspect	ISO 2424	Multi-Level Pattern Loop
Dye Method	EN 994	100% Solution Dyed
Dimensions	EN 994	50 cm x 50 cm   20 tiles (5 m²) per box
Primary Backing	ISO 2424	Pet Non-Woven
Secondary Backing	ISO 2424	Taskworx®   Polymer Modified Bitumen
Pile Fibre Composition	ISO 2424	Ecosolution Q® Polyamide 6
Total Thickness	ISO 1765	6.4 mm
Effective Pile Thickness	ISO 1766	2.3 mm
Total Mass	ISO 8543	4279 g/m²
Nominal Total Pile Mass	ISO 2424	542 g/m²
Effective Pile Mass	ISO 8543	236 g/m²
Pile Density	ISO 8543	0.103 g/cm³
Total Recycled Content	50% (pre-consumer 50%   post-consumer 0%)	

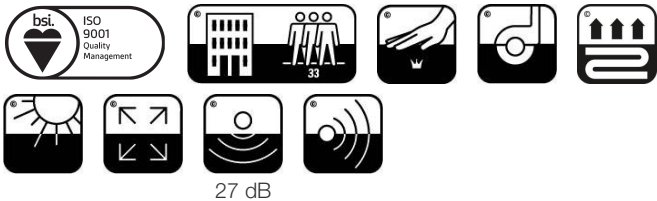
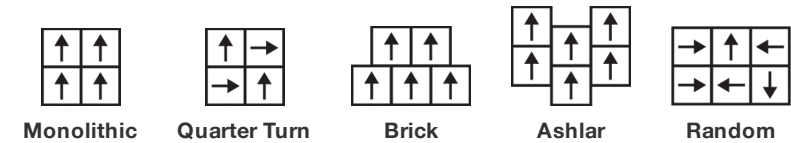


Performance

Number of Tufts	ISO 1763	160,000/m²   40.7 per 10cm
Electrostatic Propensity	ISO 6356	≤ 2.0 kv (Stroll Test)
Use Classification	EN 1307	33 Commercial Heavy
Luxury Class	EN 1307	LC1
Dimensional Stability	EN 986	≤ 0.2%
Impact Sound Insulation	ISO 10140	27 Db
Sound Absorption Classification	ISO 354/11654	0.20 Aw   Class E
Thermal Resistance m² K/W	ISO 8302	0.076 M² K/W Tog 0.76
Dry Slip Resistance	ISO 13893	Pass / No Pulled Loops
Colour Fastness To Light	ISO 105-B02	>6
Flammability	EN 13501-1	Bfl-S1 (Adhered Testing)
Castor Chair	EN 985	≥2.4 Continuous Use

15 Year Commercial Limited subject to installation in full accordance with manufacturer's instructions and a regular effective cleaning and maintenance programme.

Recommended Installation Method



17

EU.DOP/0493/CPR/0621/0422/BT

OOSTERHOUT SHOWROOM, VAARTWEG 10, 4905  
BL NETHERLANDS (NLD)

Notified Body 2895

22

UK.DOP/0338/CPR/1220/0422/BT

SHAW EUROPE LIMITED BLACKADDIE RD,  
SANQUHAR DG4 6DB, UNITED KINGDOM

Approved Body 0338

HCHO

Bfl-s1

EN14041:2004/AC:2006

DS

For use as an indoor floor covering as specified by the manufacturer

Coordinating Products

Carpet Tile: **Array Taskworx® Tile, Offset Taskworx® Tile, Structure Taskworx® Tile**

Material Health & Environmental Certifications

Certifications below apply exclusively to the carpet tile rug itself and not the LokWorx Tabs adhesive

Declaration of Performance	<b>EU.DOP/0493/CPR/0621/0422/BT</b>
Cradle to Cradle Certified®	<b>Bronze Level (Version 3.1)</b>
Environmental Product Declaration (EPD)	<b>3rd Party Certified in Accordance with ISO14044, ISO14025 &amp; EN15804</b>
Building Research Establishment (BRE)	<b>A+ Health/A+ Retail 0.34/0.453 Ecopoints</b>
Environmental Guarantee*	<b>Take Back Policy Offered For All Taskworx Products</b>
ISO 9001	<b>Certified</b>
Country of Origin**	<b>United Kingdom</b>
BREEAM Contribution Credit	<b>Certificate of Approval Schools/Offices/Health/Industrial Shed Retail</b>

WELL V2 Contribution Credit

X08 Hazardous Material Reduction Part 1: Limit Hazardous Materials Optimization	<b>C2C Bronze Level (Version 3.1)</b>
X10 Volatile Compound Reduction Part 1 (A): Manage Volatile Organic Compounds (VOCs) Optimization	<b>C2C Bronze Level (Version 3.1)</b>
X10 Volatile Compound Reduction Part 2: Manage Semi-Volatile Organic Compounds (SVOCs) Optimization	<b>C2C Bronze Level (Version 3.1)</b>
X11 Long Term Emissions Control Part 2: Flooring Optimization	<b>M1&gt; Emissions Class For Building Material</b>
X13 Enhanced Material Precaution Part 1: Select Optimized Materials Optimization	<b>C2C Bronze Level (Version 3.1)</b>
X14 Material Transparency Part 1: Promote Ingredient Disclosure Optimization	<b>C2C Bronze Level (Version 3.1)</b>

Leed v4 Contribution Credits

MR Credit: Building Product Disclosure and Optimization Environmental Product Declarations - Option 1: Environmental Product Declaration (EPD)	<b>3rd Party Certified in Accordance with ISO14044, ISO14025 &amp; EN15804</b>
MR Credit: Building Product Disclosure and Optimization Material Ingredients - Option 1: Material Ingredient Reporting	<b>C2C Bronze Level (Version 3.1)</b>
MR Credit: Building Product Disclosure and Optimization Material Ingredients - Option 2: Material Ingredient Optimization	<b>C2C Bronze Level (Version 3.1)</b>

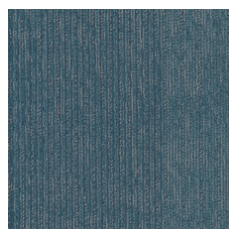
Air Quality

Indoor Air Comfort Gold	<b>Certified</b>
M1	<b>Certified</b>

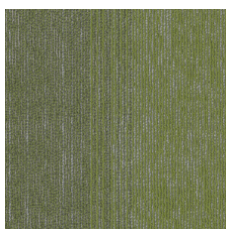
Memberships

WGBC Framework	<b>WGBC Framework</b>
UKGBC	<b>UKGBC</b>
Emirates Green Building Council	<b>Emirates Green Building Council</b>
Chemsec	<b>Chemsec</b>

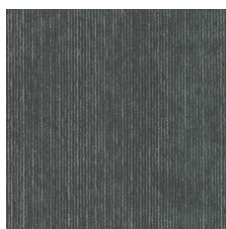
## Light Reflectance Value



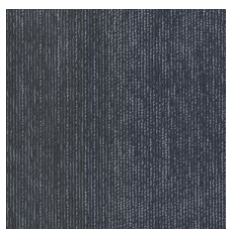
Reflection 94323  
LRV 8.9 | L\* 35.69



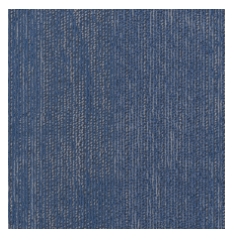
Mountain View 94326  
LRV 14.1 | L\* 44.38



Glassy Green 94335  
LRV 7.9 | L\* 33.84



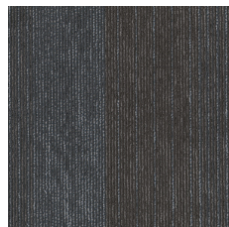
Shimmery Blue 94485  
LRV 6.2 | L\* 29.8



Blue Belle 94486  
LRV 8.1 | L\* 34.12



Chrome Black 94500  
LRV 4.8 | L\* 26.28



Glossy Charcoal 94505  
LRV 5.1 | L\* 26.93



Sterling Silver 94515  
LRV 13.8 | L\* 43.98



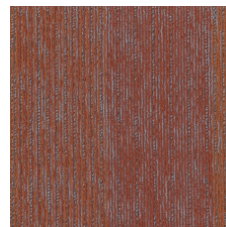
Steel Grey 94530  
LRV 8.3 | L\* 34.53



Mirror Grey 94535  
LRV 13.8 | L\* 43.95



Polished Stone 94557  
LRV 7.3 | L\* 32.37



Golden Gate 94668  
LRV 8.9 | L\* 35.72



Metallic Beige 94760  
LRV 16.1 | L\* 47.13



Shiny Pebble 94761  
LRV 11.3 | L\* 40.05

## Additional Information

\*\*Manufactured in ISO 9001 certified facility. Meets or exceeds all local and national regulations in country of manufacture.

[Installation Guidelines](#)

[Maintenance Guidelines](#)

15 year commercial limited

Specifications are subject to nominal manufacturing variance. Material supply and/or manufacturing processes may necessitate changes without notice.

This product is an exclusive design and may not be duplicated in any manner. Use of this design in the creation of another product design is also strictly prohibited.

Visit [shawcontract.com/testing](http://shawcontract.com/testing) for more information.



Corporate Headquarters +1 800 257 7429 | +1 706 532 7984 | Atlanta +1 404 853 7429 | Bengaluru +91 80 6773 0202 | Beijing +86 10 6568 588 | Chicago +1 312 467 1331 | Dubai +971 4 584 6956 | Hong Kong +852 2623 0371 | Latin America (Miami) +1 305 827 5912 | London +44 207 961 4120 | Los Angeles +1 800 233 1614 | Melbourne +61 3 9939 8543 | Mexico City +55 5010 7600 | Mumbai +91 22 6284 5050 | Nantong +86 400 800 7429 | New York +1 212 953 7429 | Paris +33 (0) 1 81 22 44 39 | San Francisco +1 415 955 1920 | Santiago +562 2431 5000 x 550 | São Paulo +55 11 3071 1702 | Shanghai +86 21 3338 4000 | Singapore +65 6733 1811 | Sydney +61 800 556 302