



Purpose Taskworx® Tile

Style Number	5T337	
Collection	District	
Product Type	Carpet Tile	
Construction	Standard	Data + Performance
Type of Manufacture	ISO 2424	tufted 1/10" 39.4 per 10cm
Aspect	ISO 2424	Multi-Level Pattern Loop
Dye Method	EN 994	100% Solution Dyed
Dimensions	EN 994	50 cm x 50 cm 20 tiles (5 m²) per box
Primary Backing	ISO 2424	Pet Non-Woven
Secondary Backing	ISO 2424	Taskworx® Polymer Modified Bitumen
Pile Fibre Composition	ISO 2424	Ecosolution Q® Polyamide 6
Total Thickness	ISO 1765	6.2 mm
Effective Pile Thickness	ISO 1766	2.0 mm
Total Mass	ISO 8543	4084 g/m²
Nominal Total Pile Mass	ISO 2424	474 g/m²
Effective Pile Mass	ISO 8543	217 g/m²
Pile Density	ISO 8543	0.106 g/cm³
Total Recycled Content		51% (pre-consumer 51% post-consumer 0%)



Performance

Number of Tufts	ISO 1763	153,000/m² 38.7 per 10cm
Electrostatic Propensity	ISO 6356	≤ 2.0 kv (Stroll Test)
Use Classification	EN 1307	33 Commercial Heavy
Luxury Class	EN 1307	LC1
Dimensional Stability	EN 986	≤ 0.2%
Impact Sound Insulation	ISO 10140	25db
Sound Absorption Classification	ISO 354/11654	0.15 Aw Class E
Thermal Resistance m² K/W	ISO 8302	0.081 M² K/W Tog 0.81
Dry Slip Resistance	ISO 13893	Pass / No Pulled Loops
Colour Fastness To Light	ISO 105-B02	>6
Flammability	EN 13501-1	Bfl-S1 (Adhered Testing)
Castor Chair	EN 985	≥2.4 Continuous Use

15 Year Commercial Limited subject to installation in full accordance with manufacturer's instructions and a regular effective cleaning and maintenance programme.

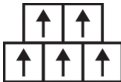
Recommended Installation Method



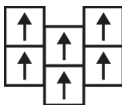
Monolithic



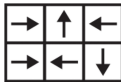
Quarter Turn



Brick



Ashlar



Random



25dB

Corporate Headquarters +1 800 257 7429 | +1 706 532 7984 | Atlanta +1 404 853 7429 | Bengaluru +91 80 6773 0202 | Beijing +86 10 6568 588 | Chicago +1 312 467 1331 | Dubai +971 4 584 6956 | Hong Kong +852 2623 0371 | Latin America (Miami) +1 305 827 5912 | London +44 207 961 4120 | Los Angeles +1 800 233 1614 | Melbourne +61 3 9939 8543 | Mexico City +55 5010 7600 | Mumbai +91 22 6284 5050 | Nantong +86 400 800 7429 | New York +1 212 953 7429 | Paris +33 (0) 1 81 22 44 39 | San Francisco +1 415 955 1920 | Santiago +562 2431 5000 x 550 | São Paulo +55 11 3071 1702 | Shanghai +86 21 3338 4000 | Singapore +65 6733 1811 | Sydney +61 800 556 302

Coordinating Products

Carpet Tile: **Intent Taskworx® Tile, Situation Taskworx® Tile**

Material Health & Environmental Certifications

Certifications below apply exclusively to the carpet tile rug itself and not the LokWorx Tabs adhesive

Declaration of Performance	EU.DOP/0493/CPR/0621/0422/BT
Building Research Establishment (BRE)	A+ Health/A+ Retail 0.301/0.399 Ecopoints
Country of Origin**	United Kingdom
BREEAM Contribution Credit	Certificate of Approval Schools/Offices/Health/Industrial Shed Retail

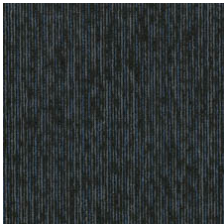
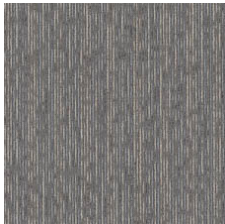
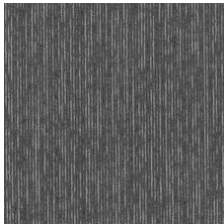
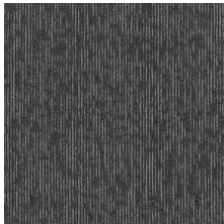
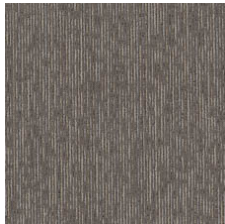
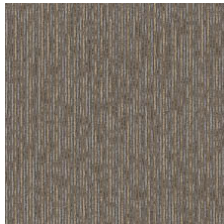
Air Quality

Indoor Air Comfort Gold	Certified
M1	Certified

Memberships

WGBC Framework	WGBC Framework
UKGBC	UKGBC
Emirates Green Building Council	Emirates Green Building Council
Chemsec	Chemsec

Light Reflectance Value

					
Stellar 08505 LRV 3.3 L* 21.29	Skylight 08530 LRV 12.9 L* 42.55	Nocturne 08557 LRV 8.3 L* 34.59	Shale 08597 LRV 5.7 L* 28.64	Woodsmoke 08760 LRV 10 L* 37.9	Sierra 08761 LRV 11.6 L* 40.55

Additional Information

15 year commercial limited	Specifications are subject to nominal manufacturing variance. Material supply and/or manufacturing processes may necessitate changes without notice. This product is an exclusive design and may not be duplicated in any manner. Use of this design in the creation of another product design is also strictly prohibited. Visit shawcontract.com/testing for more information.
----------------------------	---

