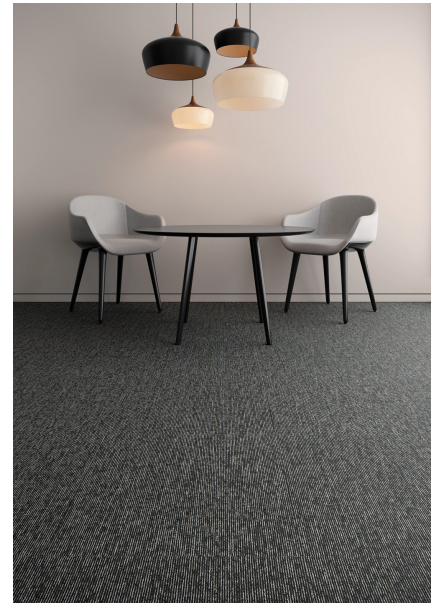


Purpose Taskworx® Tile

Stijlnummer	5T337	
Collectie	District	
Producttype	Tapijttegel	
Construction	Standard	Data + Performance
Type Fabricage	ISO 2424	tufted 1/10" 39.4 per 10cm
Uitzicht	ISO 2424	Multilevel-Patroonlus
Verfmethode	EN 994	100% In Oplossing Geverfd
Productformaat	EN 994	50 cm x 50 cm 20 tiles (5 m²) per box
Primaire Backing	ISO 2424	Pet Nonwoven
Secundaire Backing	ISO 2424	Taskworx® Tegel Polymeer Gemodificeerd Bitumen
Vezel	ISO 2424	Ecosolution Q® Polyamide 6
Totale Dikte	ISO 1765	6.2 mm
Afgewerkte Pooldikte	ISO 1766	2.0 mm
Totale Massa	ISO 8543	4084 g/m²
Getuft Gewicht	ISO 2424	474 g/m²
Effectieve Poolmassa	ISO 8543	217 g/m²
Pooldichtheid	ISO 8543	0.106 g/cm³
Totaal Gerecycleerde Inhoud		51% (pre-consumer 51% post-consumer 0%)

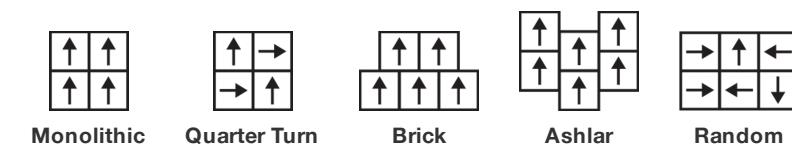


Gegevens

Steken	ISO 1763	153,000/m² 38.7 per 10cm
Elektrostatische Weerstand	ISO 6356	≤ 2.0 kv (Stroll Test)
Gebruik Classificatie	EN 1307	33 Commercial Heavy
Luxeklasse	EN 1307	LC1
Dimensionale Stabiliteit	EN 986	≤ 0.2%
Contactgeluidsisolatie	ISO 10140	25db
Geluidsabsorptieclassificatie	ISO 354/11654	0.15 Aw Class E
Warmteweerstand m² K/w	ISO 8302	0.081 M² K/W Tog 0.81
Weerstand Tegen Droog Uitglijden	ISO 13893	Pass / No Pulled Loops
Kleurvastheid Voor Licht	ISO 105-B02	>6
Ontvlambaarheid	EN 13501-1	Bfl-S1 (Adhered Testing)
Stoel Met Wieltjes	EN 985	≥2.4 Continuous Use

15 Jaar Commercieel Beperkt subject to installation in full accordance with the manufacturer's instructions and a regular effective cleaning and maintenance programme. Second location warranties are available with the use of non-adhesive IOBAC Magtabs and Tabit accessories.

Aanbevolen Installatiemethode



17

EU.DOP/0493/CPR/0621/0422/BT

OOSTERHOUT SHOWROOM, VAARTWEG 10, 4905 BL NETHERLANDS (NLD)

Notified Body 2895

22

UK.DOP/0338/CPR/1220/0422/BT

SHAW EUROPE LIMITED BLACKADDIE RD, SANQUHAR DG4 6DB, UNITED KINGDOM

Approved Body 0338

EN14041:2004/AC:2006

For use as an indoor floor covering as specified by the manufacturer

Coördinerende Producten

Carpet Tile: **Intent Taskworx® Tile, Situation Taskworx® Tile**

Kenmerken + Certificeringen

Certifications Below Apply Exclusively To The Carpet Tile Rug Itself And Not The Lokworx Tabs Adhesive

Declaration of Performance

Building Research Establishment (BRE)

land van herkomst

BREEAM Contribution Credit

EU.DOP/0493/CPR/0621/0422/BT**A+ Health/A+ Retail 0.301/0.399 Ecopoints****Verenigd Koninkrijk****Certificate of Approval
Schools/Offices/Health/Industrial Shed
Retail**

Air Quality

Indoor Air Comfort Gold

M1

Certified**Certified**

Memberships

WGBC Framework

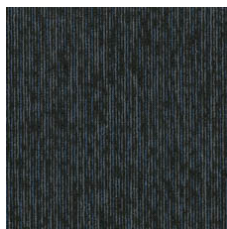
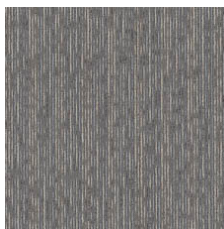
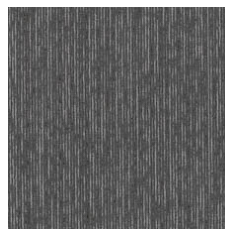
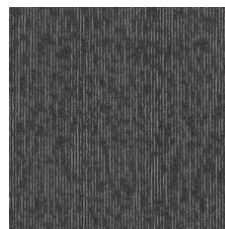
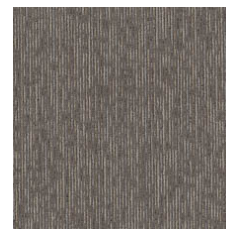
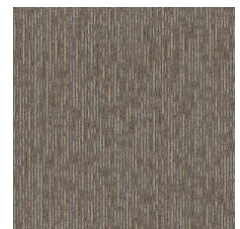
UKGBC

Emirates Green Building Council

Chemsec

WGBC Framework**UKGBC****Emirates Green Building Council****Chemsec**

Lichtreflectiewaarde

Stellar 08505
LRV 3.3 | L* 21.29Skylight 08530
LRV 12.9 | L* 42.55Nocturne 08557
LRV 8.3 | L* 34.59Shale 08597
LRV 5.7 | L* 28.64Woodsmoke 08760
LRV 10 | L* 37.9Sierra 08761
LRV 11.6 | L* 40.55

Aanvullende Informatie

15 jaar commercieel beperkt

Specifications are subject to nominal manufacturing variance. Material supply and/or manufacturing processes may necessitate changes without notice.

This product is an exclusive design and may not be duplicated in any manner. Use of this design in the creation of another product design is also strictly prohibited.

Visit shawcontract.com/testing for more information.

Corporate Headquarters +1 800 257 7429 | +1 706 532 7984 | Atlanta +1 404 853 7429 | Bengaluru +91 80 6773 0202 | Beijing +86 10 6568 588 | Chicago +1 312 467 1331 | Dubai +971 4 584 6956 | Hong Kong +852 2623 0371 | London +44 207 961 4120 | Los Angeles +1 800 233 1614 | Melbourne +61 3 9939 8543 | Mexico City +55 5010 7600 | Mumbai +91 22 6284 5050 | Nantong +86 400 800 7429 | New York +1 212 953 7429 | Paris +33 (0) 1 81 22 44 39 | San Francisco +1 415 955 1920 | Shanghai +86 21 3338 4000 | Singapore +65 6733 1811 | Sydney +61 800 556 302

© 2025 Shaw Industries Group, Inc., a Berkshire Hathaway Company
April 5, 2025

2 of 2