

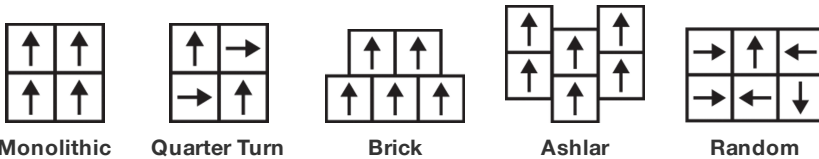
## Partner Tile

상품 유형	Carpet Tile
수집	In Sync
스타일 번호	5T357
구성	다중 레벨 루프식
섬유	Ecosolution Q® 나일론
염료 방법	100% 원착 염색
기본 백업	합성
보조 백업	Ecoworx® 타일
보호 처리	SSP® Shaw 흠먼지 보호

	u.s.	metric
제품 크기	24 in x 24 in	61 cm x 61 cm
상자 당 면적	80 ft <sup>2</sup>	7.43 m <sup>2</sup>
상자 당 조각	20 pcs	
계량기	1/10 in	39.4 per 10 cm
스티치	10.0 per in	39.0 per 10 cm
완성 된 말뚝 두께	0.078 in	1.98 mm
평균 밀도	6923 oz/yd <sup>3</sup>	0.256 g/cm <sup>3</sup>
총 두께	0.230 in	5.84 mm
슬을다는 무게	15 oz/yd <sup>2</sup>	508.6 g/m <sup>2</sup>



## 권장 설치 방법



## 데이터 + 테스트

복사 패널 (Astm E648)	Class I
Nbs 연기	Less Than 450
정전기 성향	Less Than 3.5 kv
알약 테스트	Pass*
Ada 준수	0.6 이상, ADA 보행 노면과 이용 가능한 경로의 권장 마찰계수 충족***

## 보증

10년 상용 제한

## 속성 + 인증

Certifications Below Apply Exclusively To The Carpet Tile Rug Itself And Not The Lokworx Tabs Adhesive

Climate Impact

Total Recycled Content

37% (Pre-Consumer 37% | Post-Consumer 0%)

Global Product Assessment

Country of Origin\*\* | Imported

Corporate Headquarters +1 800 257 7429 | +1 706 532 7984 | Atlanta +1 404 853 7429 | Bengaluru +91 80 6773 0202 | Beijing +86 10 6568 588 | Chicago +1 312 467 1331 | Dubai +971 4 584 6956 | Hong Kong +852 2623 0371 | London +44 207 961 4120 | Los Angeles +1 800 233 1614 | Melbourne +61 3 9939 8543 | Mexico City +55 5010 7600 | Mumbai +91 22 6284 5050 | Nantong +86 400 800 7429 | New York +1 212 953 7429 | Paris +33 (0) 1 81 22 44 39 | San Francisco +1 415 955 1920 | Shanghai +86 21 3338 4000 | Singapore +65 6733 1811 | Sydney +61 800 556 302

© 2025 Shaw Industries Group, Inc., a Berkshire Hathaway Company  
April 18, 2025

1 of 2

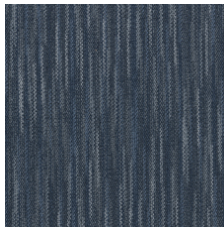
## 코디네이팅 제품

Carpet Tile: **Companion Tile, Correspond Tile, Partner Tile**

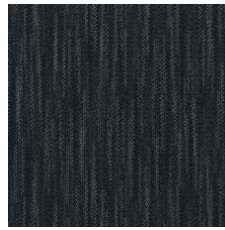
## Available Colorways



Union 52335



Balanced 52485



Link 52500



Fuse 52515



Equal 52530



Alike 52557



Duo 52597



Mix 52750

## 추가 정보

\*\*\*This carpet is manufactured to be ADA compliant, but to be fully ADA compliant, the end-user must ensure the carpet is adhered to the floor and installed as outlined in the ADA standards.

Specifications are subject to nominal manufacturing variance. Material supply and/or manufacturing processes may necessitate changes without notice.

This product is an exclusive design and may not be duplicated in any manner. Use of this design in the creation of another product design is also strictly prohibited.

Visit [shawcontract.com/testing](https://shawcontract.com/testing) for more information.