

Ease Ecologix® Tile

| | |
|-----------------------|--|
| Product Type | Carpet Tile |
| Collection | Symmetry |
| Style Number | 5T343 |
| Construction | Multi-Level Pattern Cut/Loop |
| Fiber | Ecosolution Q100™ Nylon |
| Dye Method | 100% Solution Dyed |
| Primary Backing | Synthetic |
| Secondary Backing | Ecologix® Tile |
| Protective Treatments | SSP® Shaw Soil Protection |
| Recommended Adhesive | 3000 Carpet Tile 1 Gallon, 4151 Multi-Use Carpet Tile 4 Gallon, 5000 Carpet Tile 1 Gallon, 3800 Indoor Outdoor Carpet Tile 4 Gallon or 5000 Carpet Tile 4 Gallon |

| | | |
|-------------------------|--------------|----------------|
| | u.s. | metric |
| Product Size | 9 in x 36 in | 23 cm x 91 cm |
| Area per Carton | 22.5 ft² | 2.09 m² |
| Pieces per Carton | 10 pcs | |
| Gauge | 1/10 in | 39.4 per 10 cm |
| Stitches | 10.0 per in | 40.0 per 10 cm |
| Finished Pile Thickness | 0.098 in | 2.49 mm |
| Average Density | 6612 oz/yd³ | 0.245 g/cm³ |
| Total Thickness | 0.360 in | 9.14 mm |
| Tufted Weight | 18 oz/yd² | 610.3 g/m² |



Recommended Installation Method

Ashlar

Herringbone

Monolithic

Stagger

Performance + Testing

| | |
|----------------------------|------------------|
| Radiant Panel | Class I |
| NBS Smoke | Less Than 450 |
| Electrostatic Propensity | Less Than 3.5 kv |
| CRI Green Label Plus (GLP) | GLP9968 |
| Pill Test | Pass* |

Test Reports may be included or listed by the manufacturing/inventory style number as opposed to the noted selling style number.

Warranties

Lifetime Commercial Limited Warranty

Coordinating Products

Carpet Tile: **Interlude Ecologix® Tile**

Material Health & Environmental Certifications

Certifications below apply exclusively to the carpet tile rug itself and not the LokWorx Tabs adhesive

Health & Wellbeing

Material Ingredient Transparency

Cradle to Cradle Certified® | Bronze Level (Version 3.1)
Health Product Declaration (HPD) | 1,000 ppm Disclosure
Declare | LBC Compliant
NSF 140 | Platinum

Indoor Air Quality

CRI Green Label Plus (GLP) | GLP9968

Climate Impact

Environmental Product Declaration (EPD)

3rd Party Certified in Accordance with ISO14044, ISO14025 & EN15804

Embodied Carbon (Cradle to Gate)

8.36 kg CO₂/m²

Life-Cycle Carbon Emissions

Carbon Neutral

Total Recycled Content

66% (Pre-Consumer 45% | Post-Consumer 21%)

Product Packaging

100% Recyclable

Global Product Assessment

Environmental Guarantee* | Re[turn] Reclamation Program* | Pickup & Delivery Available

Country of Origin | USA**

WELL V2 Contribution Credit

X08 Hazardous Material Reduction

C2C Bronze Level (Version 3.1)

Part 1: Limit Hazardous Materials Optimization

X10 Volatile Compound Reduction

C2C Bronze Level (Version 3.1)

Part 1 (A): Manage Volatile Organic Compounds (VOCs) Optimization

X11 Long Term Emissions Control

Green Label Plus Certification: GLP9968

Part 2: Flooring Optimization

X13 Enhanced Material Precaution

C2C Bronze Level (Version 3.1)

Part 1: Select Optimized Materials Optimization

X14 Material Transparency

C2C Bronze Level (Version 3.1)

Part 1: Promote Ingredient Disclosure Optimization

Leed v4 Contribution Credits

MR Credit: Building Product Disclosure and Optimization

3rd Party Certified in Accordance with ISO14044, ISO14025 & EN15804

Environmental Product Declarations - Option 1: Environmental Product Declaration (EPD)

MR Credit: Building Product Disclosure and Optimization

HPD (Version 2.1) or C2C Bronze Level (Version 3.1)

Material Ingredients - Option 1: Material Ingredient Reporting

MR Credit: Building Product Disclosure and Optimization

C2C Bronze Level (Version 3.1)

Material Ingredients - Option 2: Material Ingredient Optimization

EQ Credit: Low Emitting Materials

Green Label Plus Certification: GLP9968

Option 1: Product Category Calculations

Available Colorways



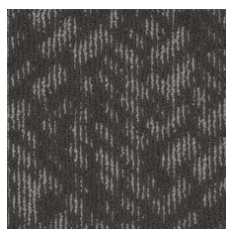
Calm 27120
LRV 27.1 | L* 59.07



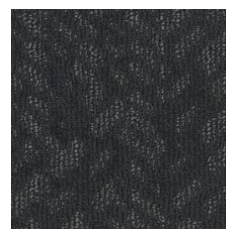
Pitch 27540
LRV 15.6 | L* 46.47



Orchestrate 27550
LRV 11.8 | L* 40.88



Pulse 27560
LRV 7.9 | L* 33.74



Resolve 27580
LRV 4.5 | L* 25.13



Pause 27720
LRV 22.1 | L* 54.12



Cadence 27740
LRV 15.1 | L* 45.7



Interval 27770
LRV 9.8 | L* 37.45

Additional Information

**Meets or exceeds all local and national regulations in country of manufacture.

[Installation Guidelines](#)

[Maintenance Guidelines](#)

Specifications are subject to nominal manufacturing variance. Material supply and/or manufacturing processes may necessitate changes without notice.

This product is an exclusive design and may not be duplicated in any manner. Use of this design in the creation of another product design is also strictly prohibited.

Visit shawcontract.com/testing for more information.



PVC-Free

Corporate Headquarters +1 800 257 7429 | +1 706 532 7984 | Atlanta +1 404 853 7429 | Bengaluru +91 80 6773 0202 | Beijing +86 10 6568 588 | Chicago +1 312 467 1331 | Dubai +971 4 584 6956 | Hong Kong +852 2623 0371 | Latin America (Miami) +1 305 827 5912 | London +44 207 961 4120 | Los Angeles +1 800 233 1614 | Melbourne +61 3 9939 8543 | Mexico City +55 5010 7600 | Mumbai +91 22 6284 5050 | Nantong +86 400 800 7429 | New York +1 212 953 7429 | Paris +33 (0) 1 81 22 44 39 | San Francisco +1 415 955 1920 | Santiago +562 2431 5000 x 550 | São Paulo +55 11 3071 1702 | Shanghai +86 21 3338 4000 | Singapore +65 6733 1811 | Sydney +61 800 556 302