

Landing Edge Tile

Product Type	Carpet Tile
Collection	Shifting Fields
Style Number	5T375
Construction	Multi-Level Pattern Loop
Fiber	Ecosolution Q100® Nylon
Dye Method	100% Solution Dyed
Primary Backing	Synthetic
Secondary Backing	Ecoworx® Tile
Protective Treatments	SSP® Shaw Soil Protection
Recommended Adhesive	LokDots, 3000 Carpet Tile 4 Gallon, 3000 Carpet Tile 1 Gallon, 4151 Multi-Use Carpet Tile 4 Gallon, 5000 Carpet Tile 1 Gallon, LokWorx Adhesive Tabs, 3800 Indoor Outdoor Carpet Tile 4 Gallon or 5000 Carpet Tile 4 Gallon

	u.s.	metric
Product Size	18 in x 36 in	46 cm x 91 cm
Area per Carton	45 ft²	4.18 m²
Pieces per Carton	10 pcs	
Gauge	1/10 in	39.4 per 10 cm
Stitches	7.5 per in	30.5 per 10 cm
Finished Pile Thickness	0.106 in	2.69 mm
Average Density	7472 oz/yd³	0.276 g/cm³
Total Thickness	0.277 in	7.04 mm
Tufted Weight	22 oz/yd²	745.9 g/m²



Recommended Installation Method

Ashlar

Brick

Herringbone

Monolithic

Basketweave

Half Basketweave

Boxed In

When installing Landing Edge Tile with Enclave Tile or Plains Tile, shade variation may be apparent resulting in visual color changes between styles. This can be more apparent in long corridor installations.

Performance + Testing

Radiant Panel	Class I
NBS Smoke	Less Than 450
Electrostatic Propensity	Less Than 3.5 kv
CRI Green Label Plus (GLP)	GLP9968
Pill Test	Pass*
ADA Compliance	>0.6, meets the recommended static coefficient of friction for ADA walking surfaces and accessible routes***

Test Reports may be included or listed by the manufacturing/inventory style number as opposed to the noted selling style number.

Warranties

Lifetime Commercial Limited Warranty

Coordinating Products

Carpet Tile: **Enclave Tile, Landing Tile, Plains Tile, Vista Tile, Clearing Tile**

Diversity & Inclusion

We promote supplier participation that is reflective of Shaw Industries' diverse customer base and local community. We believe having a strong Supplier Diversity Program is strategic for bringing more innovation to our businesses and opening new markets for growth.

Material Health & Environmental Certifications

Certifications below apply exclusively to the carpet tile rug itself and not the LokWorx Tabs adhesive

Health & Wellbeing

Material Ingredient Transparency

Cradle to Cradle Certified® | Silver Level (Version 4.0)
Health Product Declaration (HPD) | 1,000 ppm Disclosure
Living Building Challenge (LBC) | Free of Red List Chemicals
Declare | LBC Compliant
NSF 140 | Gold

Indoor Air Quality

CRI Green Label Plus (GLP) | GLP9968

Climate Impact

Environmental Product Declaration (EPD)

3rd Party Certified in Accordance with ISO14044, ISO14025 & EN15804

Embodied Carbon (Cradle to Gate)

3.79 kg CO₂/m²

Life-Cycle Carbon Emissions

Carbon Neutral

Total Recycled Content

58% (Pre-Consumer 58% | Post-Consumer 0%)

Product Packaging

100% Recyclable

Global Product Assessment

CE Marking (EN 14041) | 3rd Party Certified

Environmental Guarantee* | Re[turn] Reclamation Program* | Through Our Environmental Guarantee, Shaw Pledges to Transport And Recycle Any Ecoworx Carpet.

Country of Origin | USA**

WELL V2 Contribution Credit

X08 Hazardous Material Reduction

C2C Silver Level (Version 4.0)

Part 1: Limit Hazardous Materials Optimization

X10 Volatile Compound Reduction

C2C Silver Level (Version 4.0)

Part 1 (A): Manage Volatile Organic Compounds (VOCs) Optimization

X11 Long Term Emissions Control

Green Label Plus Certification: GLP9968

Part 2: Flooring Optimization

X13 Enhanced Material Precaution

C2C Silver Level (Version 4.0)

Part 1: Select Optimized Materials Optimization

X14 Material Transparency

C2C Silver Level (Version 4.0)

Part 1: Promote Ingredient Disclosure Optimization

Leed v4 Contribution Credits

MR Credit: Building Product Disclosure and Optimization
Environmental Product Declarations - Option 1: Environmental Product Declaration (EPD)

MR Credit: Building Product Disclosure and Optimization
Material Ingredients - Option 1: Material Ingredient Reporting

MR Credit: Building Product Disclosure and Optimization
Material Ingredients - Option 2: Material Ingredient Optimization

MR Credit: Building Product Disclosure and Optimization
Sourcing of Raw Materials - Option 2: Leadership Extraction Practices

EQ Credit: Low Emitting Materials
Option 1: Product Category Calculations

MR Credit: Interiors Life-Cycle Impact Reduction
Option 3: Design for Flexibility

3rd Party Certified in Accordance with ISO 14044, ISO 14025 & EN15804

C2C Silver Level (Version 4.0) or HPD (Version 2.1)

C2C Silver Level (Version 4.0)

Environmental Guarantee: Re[turn] Reclamation Program* | Through Our Environmental Guarantee, Shaw Pledges to Transport And Recycle Any Ecoworx Carpet.

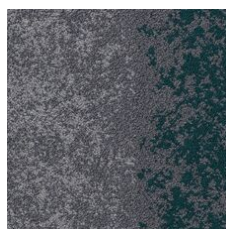
Green Label Plus Certification: GLP9968

Ecoworx Tile with Lokdots Installation System

Available Colorways



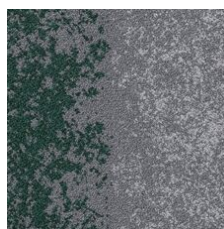
Opulent Earth 71225
LRV 11.7 | L* 40.69



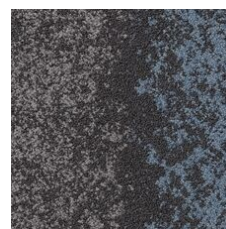
Remote Coast 71323
LRV 10.4 | L* 38.48



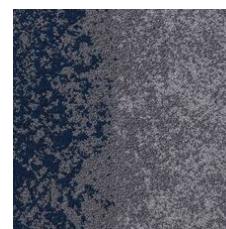
Distant Meadow 71375
LRV 6.1 | L* 29.63



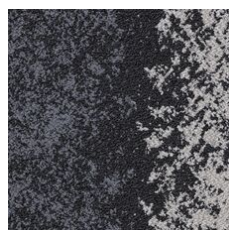
Pristine Forest 71396
LRV 16.9 | L* 48.17



Opulent Sky 71411
LRV 10.4 | L* 38.54



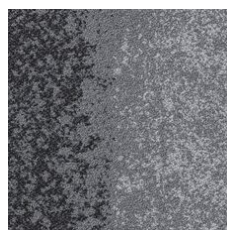
Remote Reservoir 71485
LRV 11.8 | L* 40.86



Distant Birch 71500
LRV 10.1 | L* 37.98



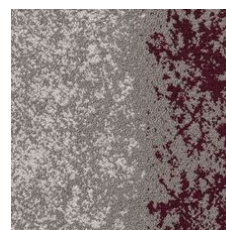
Expansive Plateau 71585
LRV 11.2 | L* 39.88



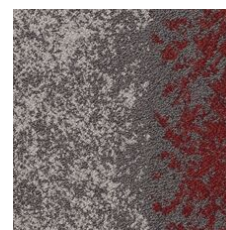
Pristine Stone 71595
LRV 15.3 | L* 45.99



Brilliant Summit 71761
LRV 17.9 | L* 49.35



Brilliant Flora 71850
LRV 17.5 | L* 48.86



Expansive Reef 71870
LRV 13.9 | L* 44.04

Additional Information

* To learn more about the recyclability of our products and our re[TURN], please visit shawcontract.com/sustainability.

**Meets or exceeds all local and national regulations in country of manufacture.

***This carpet is manufactured to be ADA compliant, but to be fully ADA compliant, the end-user must ensure the carpet is adhered to the floor and installed as outlined in the ADA standards.

[Installation Guidelines](#)

[Maintenance Guidelines](#)

Specifications are subject to nominal manufacturing variance. Material supply and/or manufacturing processes may necessitate changes without notice.

This product is an exclusive design and may not be duplicated in any manner. Use of this design in the creation of another product design is also strictly prohibited.

Visit shawcontract.com/testing for more information.

