



## Respond Colour Taskworx® Tile

Numéro Du Style	<b>5T366</b>	
Collection	<b>Living Systems</b>	
Type De Produit	<b>Dalles De Moquette</b>	
Construction	Standard	Data + Performance
Type De Fabrication	<b>ISO 2424</b>	<b>tufted 1/10"   39.4 per 10cm</b>
Construction	<b>ISO 2424</b>	<b>Tufté Structuré Bouclé à Motif</b>
Méthode De Coloration	<b>EN 994</b>	<b>100% Solution Teinte</b>
Dimensions Du Produit	<b>EN 994</b>	<b>25 cm x 100 cm</b>
Sous-couche Primaire	<b>ISO 2424</b>	<b>Pet Non-Woven</b>
Sous-couche Secondaire	<b>ISO 2424</b>	<b>Taskworx® Tile   Bitume Modifié Par Polymère</b>
Epaisseur Du Velours	<b>ISO 1765</b>	<b>7.6 mm</b>
Épaisseur Du Velours Fini	<b>ISO 1766</b>	<b>1.6 mm</b>
Poids Total	<b>ISO 8543</b>	<b>5163 g/m<sup>2</sup></b>
Poids Tufté	<b>ISO 2424</b>	<b>814 g/m<sup>2</sup></b>
Poids Du Velours Utile	<b>ISO 8543</b>	<b>179 g/m<sup>2</sup></b>
Densité Du Velours	<b>ISO 8543</b>	<b>0.110 g/cm<sup>3</sup></b>
Contenu Recyclé Total	<b>47% (pre-consumer 47%   post-consumer 0%)</b>	



### Données

Points	<b>ISO 1763</b>	<b>124,000/m<sup>2</sup>   31.5 per 10cm</b>
Propension Electrostatique	<b>ISO 6356</b>	<b>≤ 2.0 kv (Stroll Test)</b>
Classification d'Utilisation	<b>EN 1307</b>	<b>33 Commercial Heavy</b>
Classification Luxe	<b>EN 1307</b>	<b>LC1</b>
Stabilité Dimensionnelle	<b>EN 986</b>	<b>≤ 0.2%</b>
Isolation Acoustique	<b>ISO 10140</b>	<b>24 Db*</b>
Classification d'Absorption Sonore	<b>ISO 354/11654</b>	<b>0.15 Aw   Class E*</b>
Résistance Thermique m <sup>2</sup> K/w	<b>ISO 8302</b>	<b>0.086 M<sup>2</sup> K/W Tog 0.86</b>
Dry Slip Resistance	<b>ISO 13893</b>	<b>Pass / No Pulled Loops</b>
Résistance De La Couleur À La Lumière	<b>ISO 105-B02</b>	<b>&gt;6</b>
Inflammabilité	<b>EN 13501-1</b>	<b>Bfl-S1 (Adhered Testing)</b>
Chaise À Roulette	<b>EN 985</b>	<b>≥2.4 Continuous USE</b>

**Limitée Commerciale De 15 Ans** subject to installation in full accordance with the manufacturer's instructions and a regular effective cleaning and maintenance programme. Second location warranties are available with the use of non-adhesive IOBAC Magtabs and Tabit accessories.

### Méthodes d'Installation Conseillées



Ashlar



Brick



Herringbone



Monolithic



Stagg



24 dB



17

EU.DOP/0493/CPR/0621/0422/BT  
OOSTERHOUT SHOWROOM, VAARTWEG 10, 4905  
BL NETHERLANDS (NLD)  
Notified Body 2895



22

UK.DOP/0338/CPR/1220/0422/BT  
SHAW EUROPE LIMITED BLACKADDIE RD,  
SANQUHAR DG4 6DB, UNITED KINGDOM  
Approved Body 0338



EN14041:2004/AC:2006

For use as an indoor floor covering as specified by the manufacturer

Coordination Des Produits

Carpet Tile: **Observe Colour Comfortworx® Tile, Endless Comfortworx® Tile, Respond Colour Comfortworx® Tile, Transform Colour Comfortworx® Tile, Source Comfortworx® Tile, Boundless Comfortworx® Tile, Observe Comfortworx® Tile, Respond Comfortworx® Tile, Transform Comfortworx® Tile, Endless Taskworx® Tile, Respond Taskworx® Tile, Observe Taskworx® Tile, Transform Taskworx® Tile, Observe Colour Taskworx® Tile, Transform Colour Taskworx® Tile, Boundless Taskworx® Tile, Source Taskworx® Tile**

Attributs + Certifications

Certifications Below Apply Exclusively To The Carpet Tile Rug Itself And Not The Lokworx Tabs Adhesive

Declaration of Performance	EU.DOP/0493/CPR/0621/0422/BT
Certification Cradle to Cradle™ (C2C)	Bronze Level (Version 3.1)
Déclaration environnementale de produit (EPD)	Certifié Par Un Organisme Tiers Conformément Aux Normes ISO14044, ISO 14025 & EN15804
Embodied Carbon (Cradle to Gate)	4.17 kg CO <sub>2</sub> /m <sup>2</sup>
Life-Cycle Carbon Emissions	Carbon Neutral
garantie environnementale	Take Back Policy Offered For All Taskworx Products
ISO 9001	Certifié
pays d'origine	United Kingdom
BREEAM Contribution Credit	Certificate of Approval Schools/Offices/Health/Industrial Shed Retail

Well V2 Contribution Credit

X08 Réduction des matières dangereuses Partie 1 : Optimiser la limitation des matières dangereuses – 1 pt	C2C Bronze Level (Version 3.1)
X10 Réduction des composés volatils Partie 1 (A) : Optimisation de la gestion des composés organiques volatils (COV) – 1 pt	C2C Bronze Level (Version 3.1)
X11 Contrôle des émissions à long terme Partie 2 : Optimisation des revêtements de sol – 1 pt	M1> Emissions Class For Building Material
X13 Précaution accrue à l'égard des matériaux Partie 1 : Choisir des matériaux optimisés – max 2 pts	C2C Bronze Level (Version 3.1)
X14 Transparence des matériaux Partie 1 : Promouvoir l'optimisation de la divulgation des composants – max 2 pts	C2C Bronze Level (Version 3.1)

Contribution À La Certification Leed

MR Credit: Building Product Disclosure and Optimisation Environmental Product Declarations - Option 1: Environmental Product Declaration (EPD)	3rd Party Certified in Accordance with ISO14044, ISO14025 & EN15804
MR Credit: Building Product Disclosure and Optimisation Material Ingredients - Option 1: Material Ingredient Reporting	C2C Bronze Level (Version 3.1)
MR Credit: Building Product Disclosure and Optimisation Material Ingredients - Option 2: Material Ingredient Optimization	C2C Bronze Level (Version 3.1)
"Crédit EQ : matériaux faibles émissions Option 1 : calculs par catégorie de produit"	Certified

Air Quality

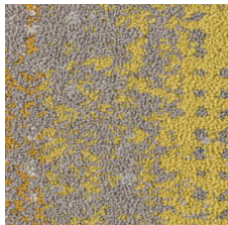
Indoor Air Comfort Gold	Certified
M1	Certified

## Memberships

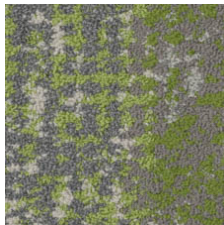
WGBC Framework  
UKGBC  
Emirates Green Building Council  
Chemsec

**WGBC Framework**  
**UKGBC**  
**Emirates Green Building Council**  
**Chemsec**

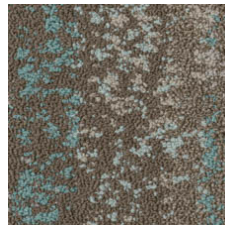
## Indice De Réflexion Lumineuse



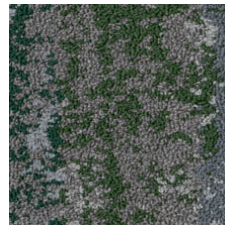
Optimistic Ochre 05225  
LRV 17.8 | L\* 49.26



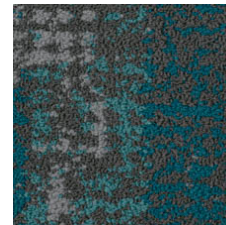
Radiant Nature 05326  
LRV 14.5 | L\* 44.92



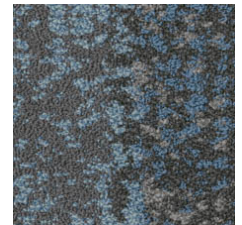
Mountain Lake 05327  
LRV 15.3 | L\* 46.04



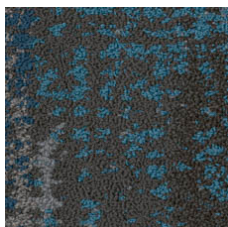
Untamed Forests 05334  
LRV 8 | L\* 33.95



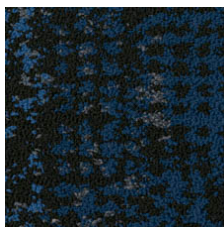
Calm Oceans 05405  
LRV 5.6 | L\* 28.37



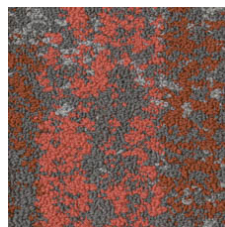
Wild Flora 05411  
LRV 8.2 | L\* 34.34



Lava Springs 05440  
LRV 7 | L\* 32.72



Deepest Skies 05486  
LRV 5.3 | L\* 27.58



Fragile Coral 05865  
LRV 8.4 | L\* 34.79

## Informations Supplémentaires

\*\*Manufactured in ISO 9001 certified facility. Meets or exceeds all local and national regulations in country of manufacture.

[Installation Guidelines](#)

[Maintenance Guidelines](#)

[Limitée commerciale de 15 ans](#)

Specifications are subject to nominal manufacturing variance. Material supply and/or manufacturing processes may necessitate changes without notice.

This product is an exclusive design and may not be duplicated in any manner. Use of this design in the creation of another product design is also strictly prohibited.

Visit [shawcontract.com/testing](http://shawcontract.com/testing) for more information.



Corporate Headquarters +1 800 257 7429 | +1 706 532 7984 | Atlanta +1 404 853 7429 | Bengaluru +91 80 6773 0202 | Beijing +86 10 6568 588 | Chicago +1 312 467 1331 | Dubai +971 4 584 6956 | Hong Kong +852 2623 0371 | London +44 207 961 4120 | Los Angeles +1 800 233 1614 | Melbourne +61 3 9939 8543 | Mexico City +55 5010 7600 | Mumbai +91 22 6284 5050 | Nantong +86 400 800 7429 | New York +1 212 953 7429 | Paris +33 (0) 1 81 22 44 39 | San Francisco +1 415 955 1920 | Shanghai +86 21 3338 4000 | Singapore +65 6733 1811 | Sydney +61 800 556 302

© 2025 Shaw Industries Group, Inc., a Berkshire Hathaway Company  
April 11, 2025

3 of 3