



Respond Colour Taskworx® Tile

Stijlnummer	5T366	
Collectie	Living Systems	
Producttype	Tapijttegel	
Construction	Standard	Data + Performance
Type Fabricage	ISO 2424	tufted 1/10"   39.4 per 10cm
Uitzicht	ISO 2424	Multilevel-Patroonlus
Verfmethode	EN 994	100% In Oplossing Geverfd
Productformaat	EN 994	25 cm x 100 cm
Primaire Backing	ISO 2424	Pet Nonwoven
Secundaire Backing	ISO 2424	Taskworx® Tegel   Polymeer Gemodificeerd Bitumen
Vezel	ISO 2424	Ecosolution Q100™ Polyamide 6   Bevat 100% Gerecycleerd Materiaal
Totale Dikte	ISO 1765	7.6 mm
Afgewerkte Pooldikte	ISO 1766	1.6 mm
Totale Massa	ISO 8543	5163 g/m²
Getuft Gewicht	ISO 2424	814 g/m²
Effectieve Poolmassa	ISO 8543	179 g/m²
Pooldichtheid	ISO 8543	0.110 g/cm³
Totaal Gerecycleerde Inhoud		65% (pre-consumer 65%   post-consumer 0%)



Gegevens

Steken	ISO 1763	124,000/m²   31.5 per 10cm
Elektrostatische Weerstand	ISO 6356	≤ 2.0 kv (Stroll Test)
Gebruik Classificatie	EN 1307	33 Commercial Heavy
Luxeklasse	EN 1307	LC1
Dimensionale Stabiliteit	EN 986	≤ 0.2%
Contactgeluidsisolatie	ISO 10140	24 Db*
Geluidsabsorptieclassificatie	ISO 354/11654	0.15 Aw   Class E*
Warmteweerstand m² K/w	ISO 8302	0.086 M² K/W Tog 0.86
Weerstand Tegen Droog Uitglijden	ISO 13893	Pass / No Pulled Loops
Kleurvastheid Voor Licht	ISO 105-B02	>6
Ontvlambaarheid	EN 13501-1	Bfl-S1 (Adhered Testing)
Stoel Met Wieltjes	EN 985	≥2.4 Continuous Use

15 Jaar Commercieel Beperkt subject to installation in full accordance with manufacturer's instructions and a regular effective cleaning and maintenance programme.

Aanbevolen Installatiemethode

Ashlar

Brick

Herringbone

Monolithic

Stagg

24 dB

17

EU.DOP/0493/CPR/0621/0422/BT  
OOSTERHOUT SHOWROOM, VAARTWEG 10, 4905  
BL NETHERLANDS (NLD)  
Notified Body 2895

22

UK.DOP/0338/CPR/1220/0422/BT  
SHAW EUROPE LIMITED BLACKADDIE RD,  
SANQUHAR DG4 6DB, UNITED KINGDOM  
Approved Body 0338

EN14041:2004/AC:2006  
For use as an indoor floor covering as specified by the manufacturer

Coördinerende Producten

Carpet Tile: **Observe Colour Comfortworx® Tile, Endless Comfortworx® Tile, Respond Colour Comfortworx® Tile, Transform Colour Comfortworx® Tile, Source Comfortworx® Tile, Boundless Comfortworx® Tile, Respond Comfortworx® Tile, Endless Taskworx® Tile, Respond Taskworx® Tile, Observe Taskworx® Tile, Transform Taskworx® Tile, Observe Colour Taskworx® Tile, Transform Colour Taskworx® Tile, Boundless Taskworx® Tile, Source Taskworx® Tile**

Kenmerken + Certificeringen

Certifications Below Apply Exclusively To The Carpet Tile Rug Itself And Not The Lokworx Tabs Adhesive

Declaration of Performance	EU.DOP/0493/CPR/0621/0422/BT
Cradle to Cradle gecertificeerd™	Bronzen Vlak (Versie 3.1)
Environmental Product Declaration (EPD)	3de Partij Gecertificeerd in Overeenstemming Met ISO14044, ISO14025 & EN15804
Embodied Carbon (Cradle to Gate)	4.17 kg CO <sub>2</sub> /m <sup>2</sup>
Life-Cycle Carbon Emissions	Carbon Neutral
milieugarantie	Terugnamebeleid Aangeboden Voor Alle Taskworx Producten
ISO 9001	Gecertificeerd
land van herkomst	Verenigd Koninkrijk
BREEAM Contribution Credit	Certificate of Approval Schools/Offices/Health/Industrial Shed Retail

Well V2 Contribution Credit

X08 Hazardous Material Reduction Part 1: Limit Hazardous Materials Optimization	C2C Bronze Level (Version 3.1)
X10 Volatile Compound Reduction Part 1 (A): Manage Volatile Organic Compounds (VOCs) Optimization	C2C Bronze Level (Version 3.1)
X11 Long Tem Emissions Control Part 2: Flooring Optimization	M1> Emissions Class For Building Material
X13 Enhanced Material Precaution Part 1: Select Optimized Materials Optimization	C2C Bronze Level (Version 3.1)
X14 Material Transparency Part 1: Promote Ingredient Disclosure Optimization	C2C Bronze Level (Version 3.1)

Groen Leed Bijdragekrediet

"MR-krediet: openbaarmaking en optimalisering van bouwproducten Milieuproductverklaringen - Optie 1: Milieuproductverklaring (EPD)"	3rd Party Certified in Accordance with ISO14044, ISO14025 & EN15804
"MR-krediet: Openbaarmaking en optimalisering van bouwproducten Materiaalingrediënten - Optie 1: Rapportage materiaalingrediënten"	C2C Bronze Level (Version 3.1)
"MR-krediet: openbaarmaking en optimalisering van bouwproducten Materiaalingrediënten - Optie 2: Optimalisering van materiaalingrediënten"	C2C Bronze Level (Version 3.1)

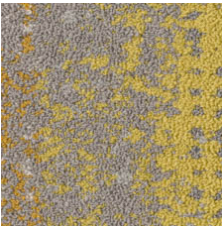
Air Quality

Indoor Air Comfort Gold	Certified
M1	Certified

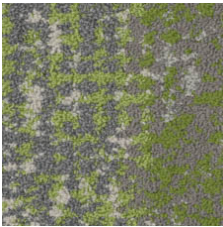
Memberships

WGBC Framework	WGBC Framework
UKGBC	UKGBC
Emirates Green Building Council	Emirates Green Building Council
Chemsec	Chemsec

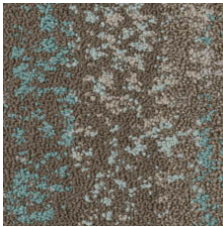
Lichtreflectiewaarde



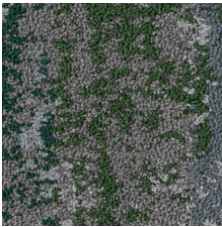
Optimistic Ochre 05225  
LRV 17.8 | L\* 49.26



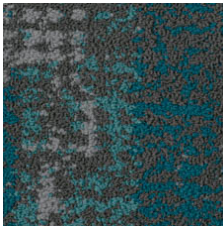
Radiant Nature 05326  
LRV 14.5 | L\* 44.92



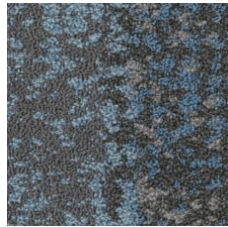
Mountain Lake 05327  
LRV 15.3 | L\* 46.04



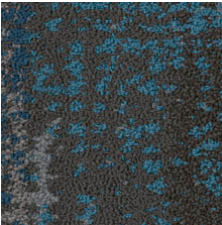
Untamed Forests 05334  
LRV 8 | L\* 33.95



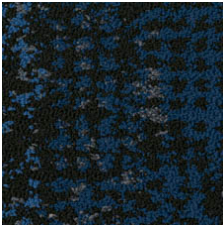
Calm Oceans 05405  
LRV 5.6 | L\* 28.37



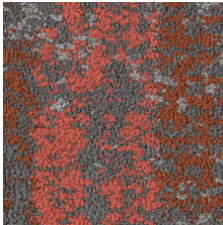
Wild Flora 05411  
LRV 8.2 | L\* 34.34



Lava Springs 05440  
LRV 7 | L\* 32.72



Deepest Skies 05486  
LRV 5.3 | L\* 27.58



Fragile Coral 05865  
LRV 8.4 | L\* 34.79

Aanvullende Informatie

\*\*Manufactured in ISO 9001 certified facility. Meets or exceeds all local and national regulations in country of manufacture.

[Installation Guidelines](#)

[Maintenance Guidelines](#)

[15 jaar commercieel beperkt](#)

Specifications are subject to nominal manufacturing variance. Material supply and/or manufacturing processes may necessitate changes without notice.

This product is an exclusive design and may not be duplicated in any manner. Use of this design in the creation of another product design is also strictly prohibited.

Visit [shawcontract.com/testing](https://shawcontract.com/testing) for more information.



Corporate Headquarters +1 800 257 7429 | +1 706 532 7984 | Atlanta +1 404 853 7429 | Bengaluru +91 80 6773 0202 | Beijing +86 10 6568 588 | Chicago +1 312 467 1331 | Dubai +971 4 584 6956 | Hong Kong +852 2623 0371 | Latin America (Miami) +1 305 827 5912 | London +44 207 961 4120 | Los Angeles +1 800 233 1614 | Melbourne +61 3 9939 8543 | Mexico City +55 5010 7600 | Mumbai +91 22 6284 5050 | Nantong +86 400 800 7429 | New York +1 212 953 7429 | Paris +33 (0) 1 81 22 44 39 | San Francisco +1 415 955 1920 | Santiago +562 2431 5000 x 550 | São Paulo +55 11 3071 1702 | Shanghai +86 21 3338 4000 | Singapore +65 6733 1811 | Sydney +61 800 556 302